

# Digifort Release Notes

Version 7.2.0.0



Rima Elektronik ve Bilişim

# Index

<b>Part I</b>	<b>Description</b>	<b>5</b>
<b>Part II</b>	<b>Version 7.2.0.0</b>	<b>7</b>
1	<b>New features and improvements.....</b>	<b>7</b>
	Support for H.265 .....	7
	Support for QuickSync .....	7
	Thumbnail search in playback .....	7
	Metadata recording .....	8
	Motion detection and event information on timeline .....	11
	Support to IPv6 .....	12
	Experimental 64bit .....	12
	Support for SNMP .....	13
	Exporting in JPEG .....	13
	Exporting in MP4 .....	14
	Codecs for AVI exporting .....	15
	Playback of archived media .....	16
	Playback of cameras from Analytics and LPR objects .....	16
	Alert e-mails with link to playback .....	18
	Alert e-mails with embedded analytics metadata .....	20
	Turbo exporting .....	22
	Instant update on timeline move .....	22
	Integration with Video Synopsis module .....	23
	Printing playback images .....	23
	Privacy Mask with blur .....	25
	Easy registration of multi-channel devices .....	25
	Image preview on camera registration .....	27
	Customized positioning of alarm screens .....	28
	Displaying the name of objects on virtual monitor .....	29
	Status of objects in the list of virtual matrix monitors .....	30
	Object selection on media player .....	30
	Disable the use of keyboard controller for playback .....	31
	Close minimized Surveillance Client .....	32
	Activation or Deactivation of maps .....	32
	Event action to activate objects .....	32
	Changing connection data for multiple cameras .....	33
	Automatic recording of metadata for analytics .....	34
	Add multiple presets to patrol .....	34
	Recorded days in system report .....	35
	Remove multiple edge recording jobs from a camera .....	36
	License expiration field .....	36
	New LPR engine .....	37
	New Surveillance Client restrictions .....	37
	Event to cancel a timer .....	38
	Surveillance Client operation buffer .....	39
	New licenses summary screen .....	39
	Verification of offline devices .....	40
	Audio recording on motion detection .....	40
	Pre-registered PTZ auxiliary .....	40

Improvements to RTSP Server .....	41
Improvements to recording and timeline reading .....	41
Better audio control in playback .....	41
Playback time in audit records .....	42
Better management of server connections in Surveillance Client .....	43
Failover operation option .....	43
Send multiple objects to Virtual Matrix .....	44
Media exporting with camera description .....	45
Improved accelerated playback .....	45
Recording error rearm time .....	45
I-Frame distance information .....	46
Master / Slave Admin password .....	46
Backup finished message .....	47
Organized disk charts .....	47
Better management of media profiles .....	48
Possibility to delete multiple objects .....	49
New snapshot formats .....	50
Ping test for I/O devices .....	50
Open field to type device model name .....	51
Edge recording download control .....	53
Searching for devices with IP Range .....	53
Better performance for objets list .....	54
Configuration data in registry (64bit) .....	54
New audio codecs .....	54
Improvements to database connection .....	55
Playback with DGF-KB1000 keyboard improved .....	55
Copy machine code to the clipboard .....	55
Timeline zoom animation .....	55
Improvements to ONVIF driver .....	56
Improvements to Axis PTZ driver .....	56
Digifort RTSP driver audio output .....	56
Barco video wall integration improvements .....	56
Quick Support .....	56
New features to Standard edition .....	56
<b>2 New supported devices.....</b>	<b>56</b>
Media Devices .....	56
I/O Devices .....	79
<b>3 Fixes.....</b>	<b>79</b>
<b>Index</b>	<b>0</b>

**Part**

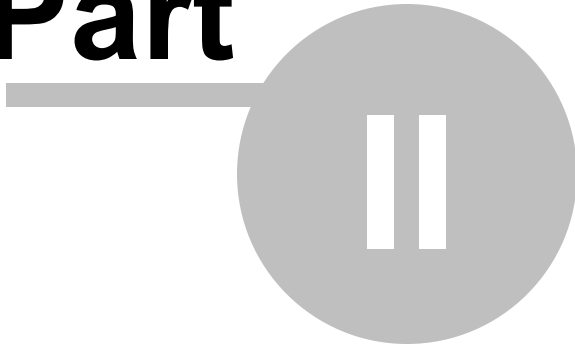


# 1 Description



This file contains the history of all changes made to the system. Changes here shown are valid for the Enterprise edition that has all the features. Professional, Standard and Explorer editions may not have certain items described in this file.

**Part**



## 2 Version 7.2.0.0

**Release date:** January 12, 2017

### 2.1 New features and improvements

This section contains information about the new system features and improvements.

#### 2.1.1 Support for H.265

Added full support for decoding and management of H.265 streams (HEVC)

H.265 is a major evolution of the H.264 codec, with gains of up to 50% less bandwidth for the same visual quality. The system now supports full compatibility with this new codec for selected cameras. The system RTSP server has also been prepared to provide H.265 stream if the camera is recording in this format.

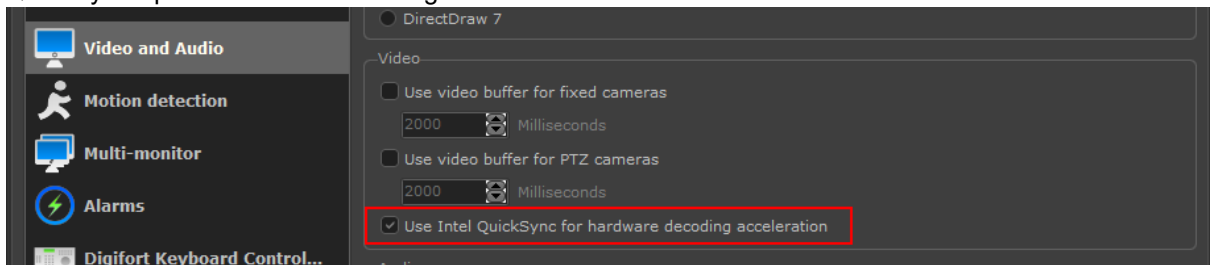
#### 2.1.2 Support for QuickSync

Added support for video decoding (H.264 and H.265) using QuickSync via the Intel processor video card.

QuickSync is an Intel technology that enables video decoding through the graphics processor embedded in its processors. To use QuickSync your computer must support the use of the built-in video card (Intel HD Graphics) and it must be active in the operating system.

It is recommended to use QuickSync for viewing 5-megapixel or larger images, where hardware decoding gains are most notable. It is also recommended to use 64bit Surveillance Client because memory usage is higher.

QuickSync support has been added to the Surveillance Client and to use it, simply enable the QuickSync option in the client settings:

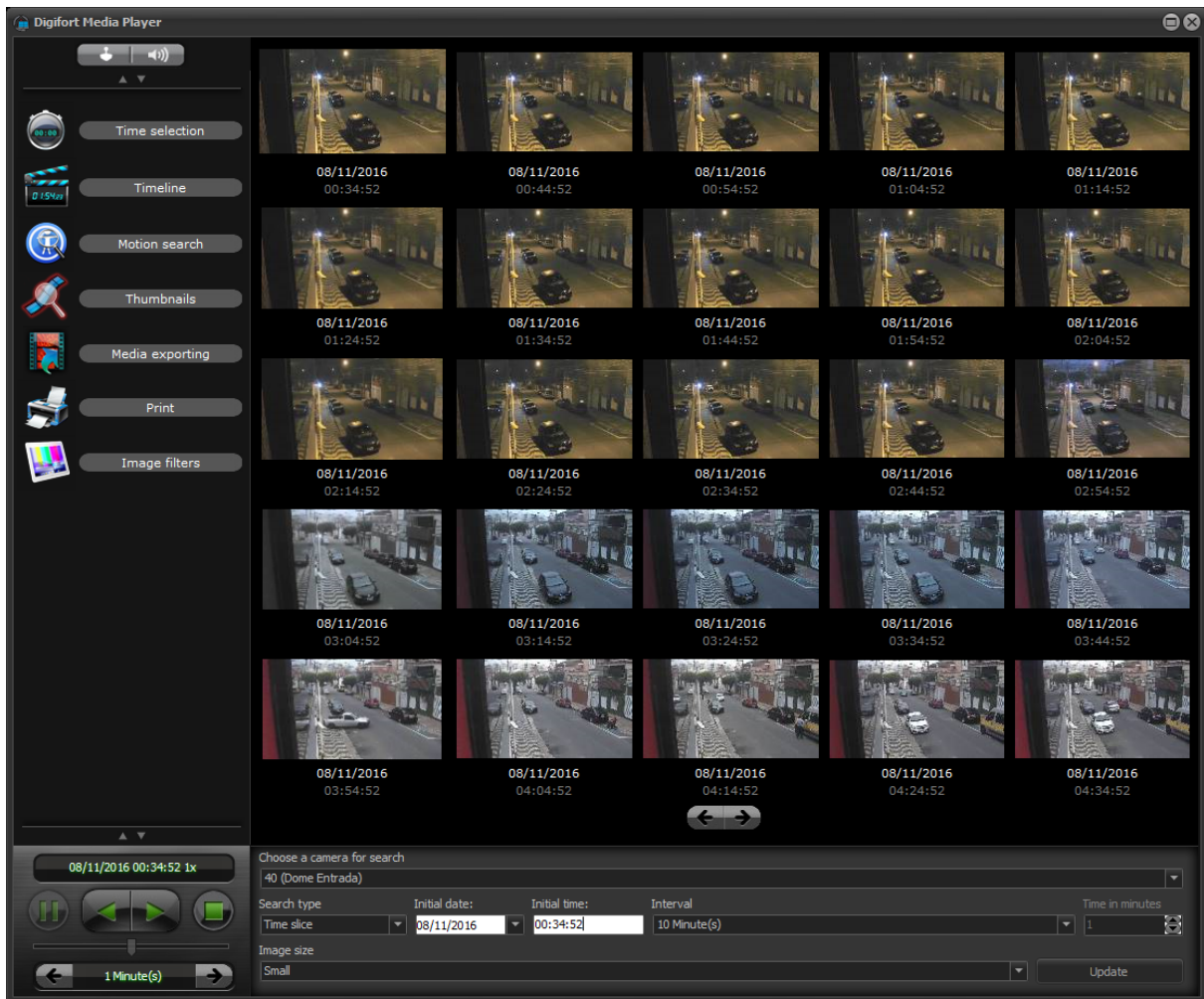


#### 2.1.3 Thumbnail search in playback

Media Player now allows you to search for thumbnails. This great feature will display a thumbnail of different recording times, allowing you to quickly locate a desired scene.

It is possible to generate thumbnails based on a time slice where the system will display thumbnails with fixed time interval or per bookmark where the system will display a thumbnail for each camera bookmark. The system still allows for the custom choice of the time interval and the size / quantity of thumbnails on the screen. Clicking on a thumbnail will synchronize the video with the time of the thumbnail for quick viewing of the event.

The system also allows you to search for thumbnails in exported videos using the native format.

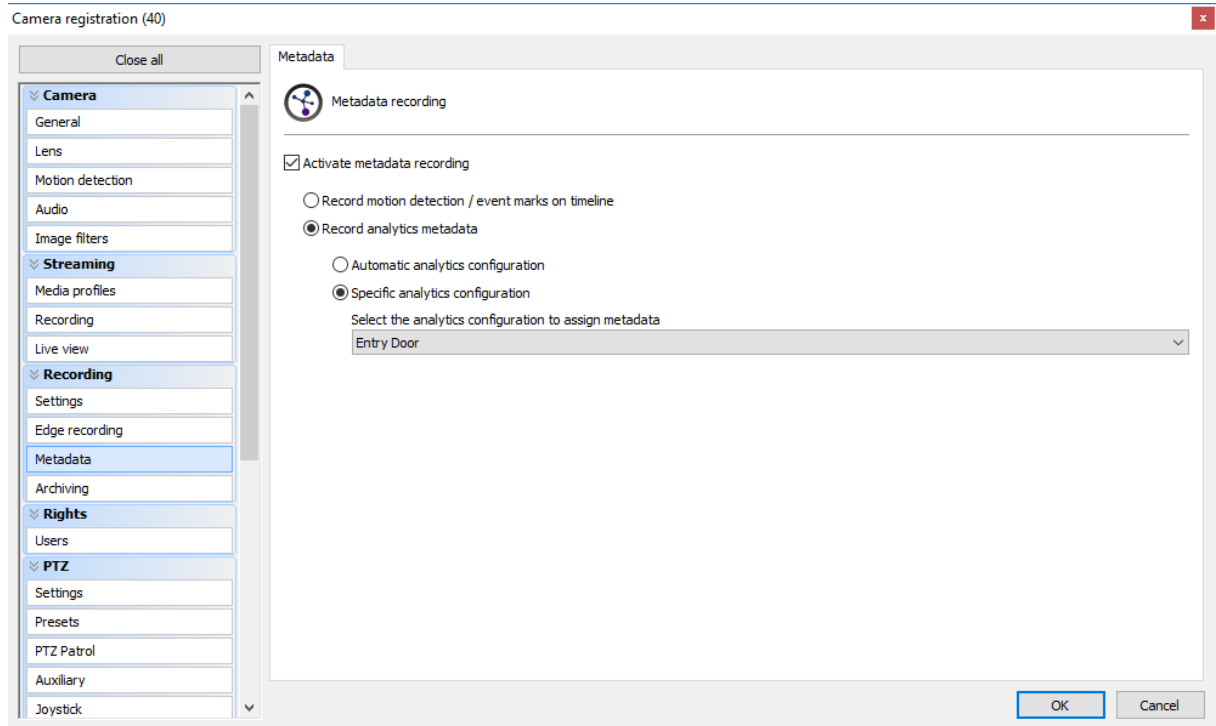


## 2.1.4 Metadata recording

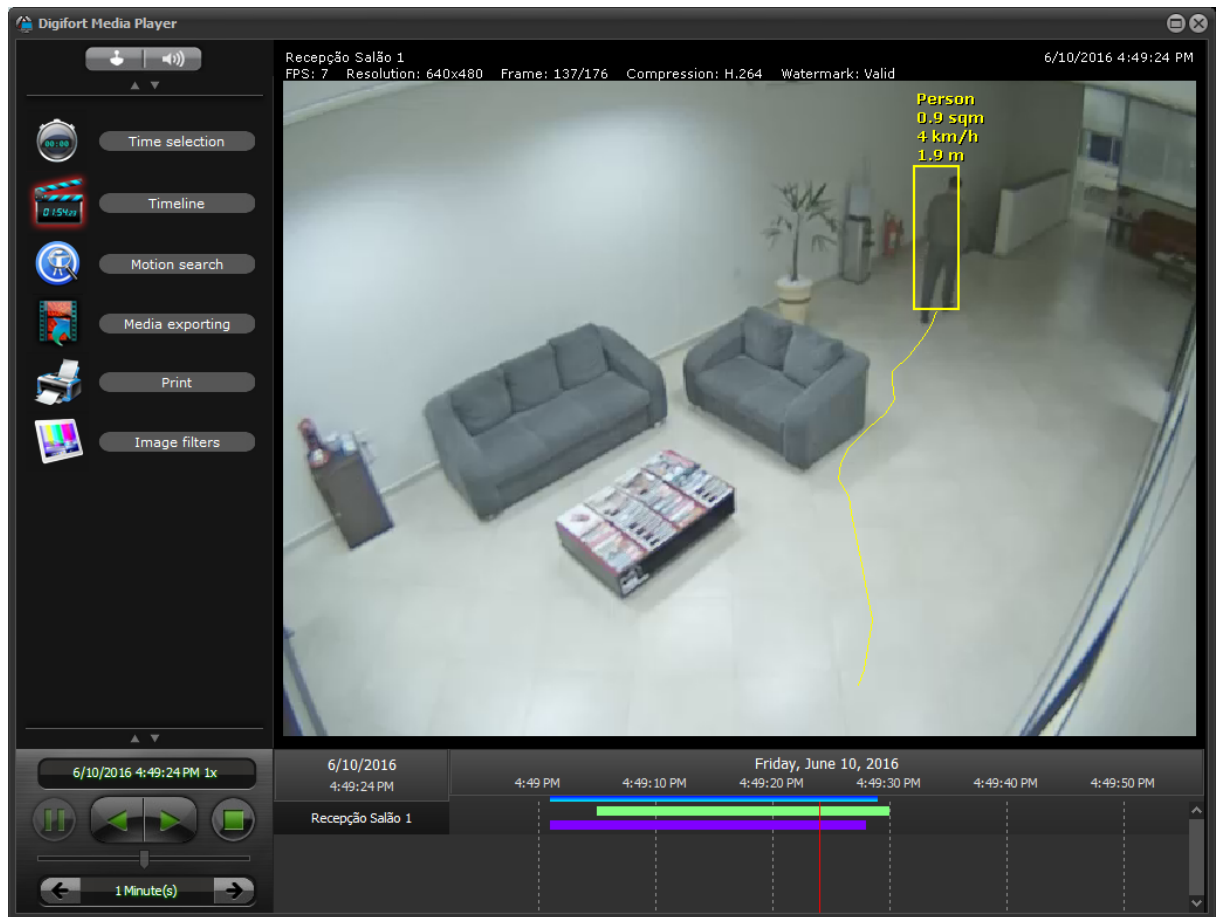
The system now allows metadata recording and playback tied to camera images. At this moment only analytics metadata are supported, but different types of metadata are planned for future implementation.

In Administration Client you can activate and deactivate the metadata recording and select its origin.

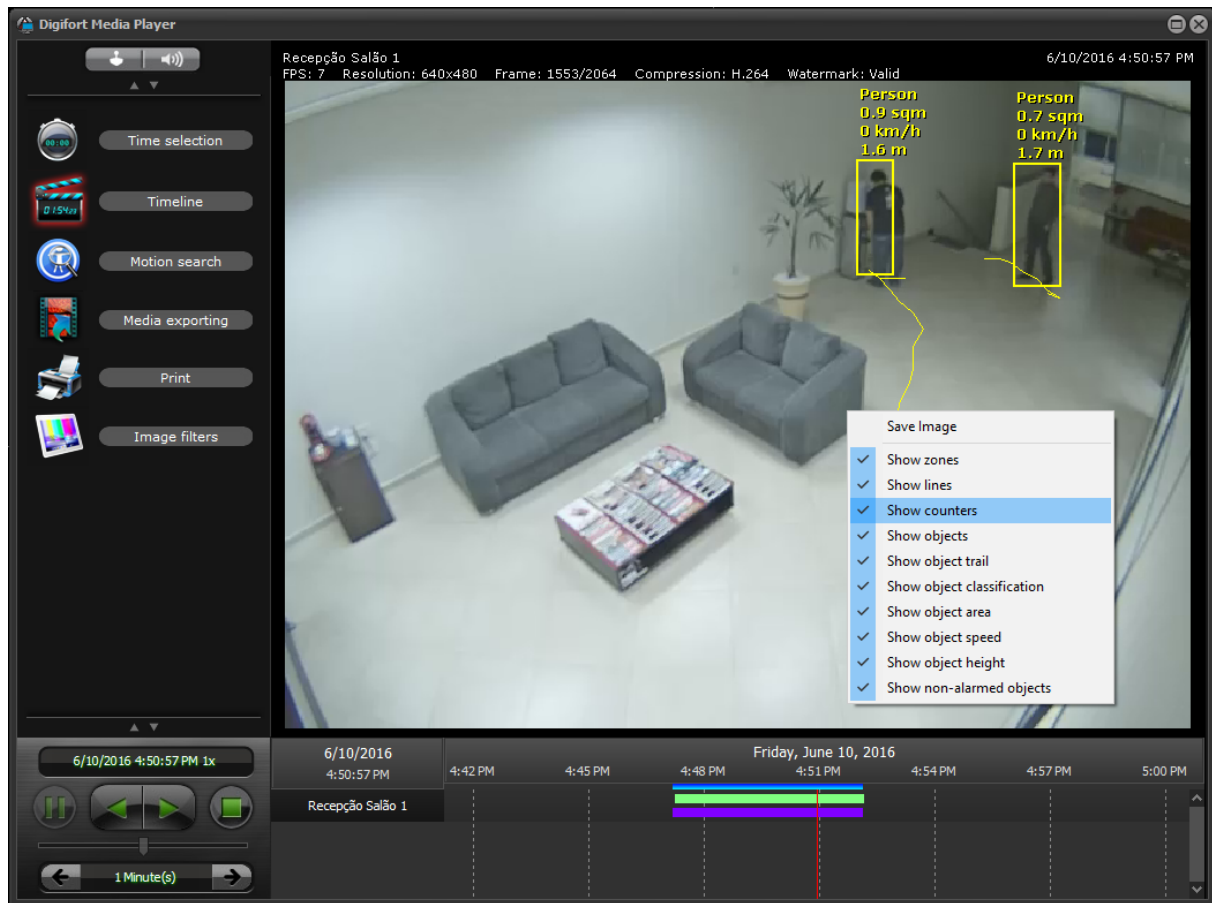




During media playback, all metadata associated to the camera will be rendered. A purple bar will be displayed in the timeline to show metadata recording track.



During media playback with metadata, the system allows the selection of which analytics metadata information will be displayed, such items can be disabled or enabled during playback.



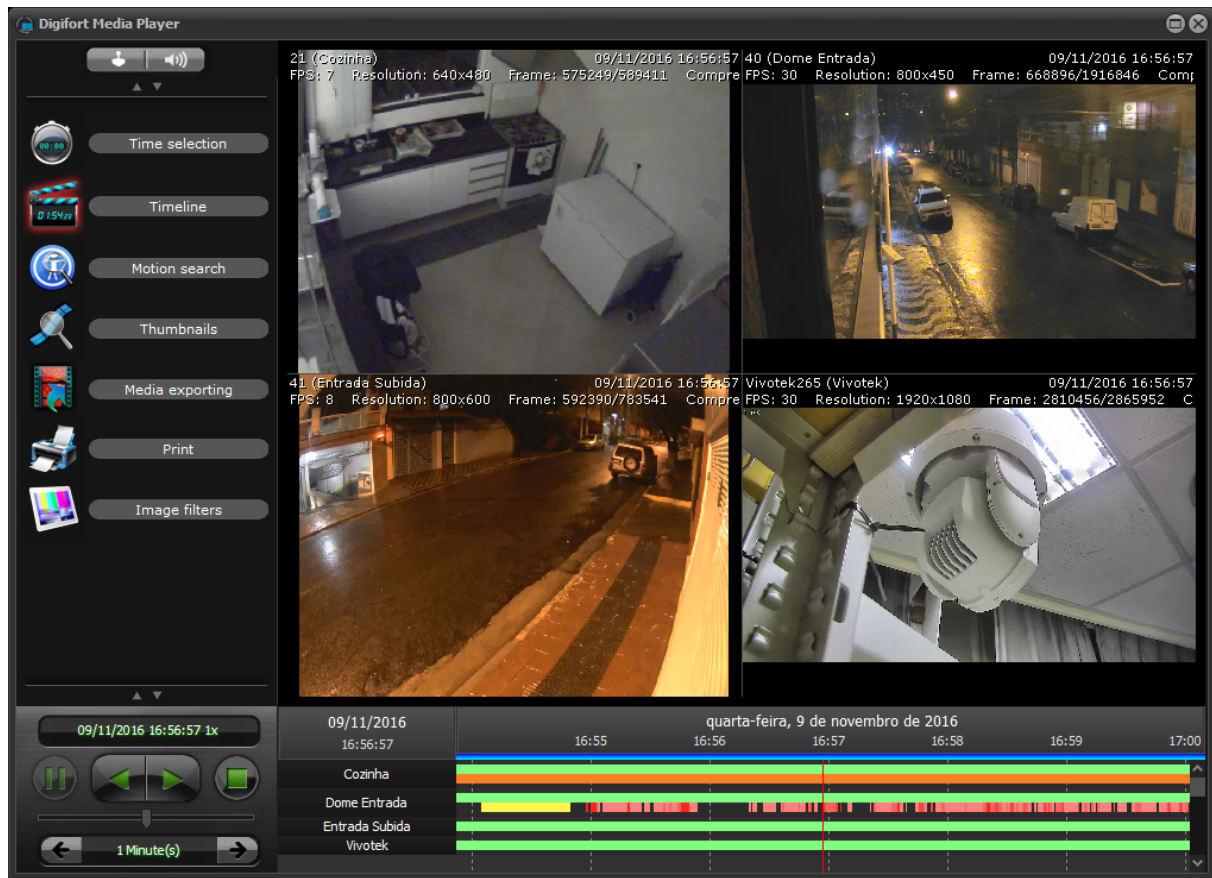
Metadata will also be included in exported media using native format.

If recording archiving is activated the metadata will also be archived, along with video and audio.

### 2.1.5 Motion detection and event information on timeline

The system now allows the recording of metadata with motion detection or event recording information. This feature allows easy identification, on the timeline, of movement or event recorded through a special line with colors identifying movement or event.

A period with a yellow band identifies an event in the recording while a period with a red band (with different intensities) identifies motion detected on the camera.



## 2.1.6 Support to IPv6

Added basic support to IPv6. It is now possible for the server to connect to cameras using IPv6 and clients accessing the server using IPv6 networks.

When using literal IPv6 addresses in the system, it has to be specified between square brackets ("[" e "]"). Example: [2001:db8:85a3:8d3:1319:8a2e:370]

The notation with brackets should be used both for server IP registration on the client as to the equipment register on the server. If the address is IPv4 literal or DNS, the address should not contain brackets.

Some features such as IP filtering and Multicast are not yet available in IPv6 but support for them will be added in future releases.

## 2.1.7 Experimental 64bit

It was included in this release the experimental 64bit version of the Server and Surveillance Client components that are the most critical in the system. The 64bit version will allow these components to use the entire available memory of the computer (Not restricted to 3.5GB as 32bits version), which should allow for better management of high-megapixel images.

By default, the 64bit version will not be available in Start Menu or Desktop. To run the Surveillance Client in 64bits it is required to execute the file `surveillance64.exe` directly, and to execute the server it is required to rename the file `server64.exe` to `server.exe` (and rename old `server.exe` to `server32.exe`), thus allowing the service manager to start the server.

Some features are still not available in the 64bits version, such as:

- Biometric authentication
- Remote keyboard control using Insight (Surveillance Client)
- Locking of surveillance station
- Integration with Digifort Evidence
- Dewarping of 360 degree images

## 2.1.8 Support for SNMP

The system now allows sending TRAPs to notify the occurrence of any system events through the SNMP protocol.

General Master / Slave Multicast Backup Database SMTP settings Disk Limits Network Units **SNMP**

Activate sending of SNMP TRAPs

Community  
public

Port for sending traps  
162

Address of agent

Address to send traps

**Device events**

Audio detection

Motion detection

Recording error

Communication failure / restore

Alarm input

Manual event

**Events**

Timer events

Scheduled event

Global events

Server failover / failback

**Video analysis**

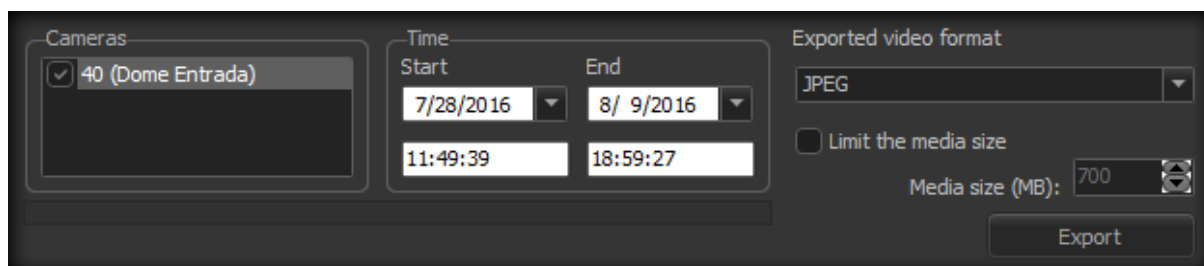
Analytics

LPR

Save settings

## 2.1.9 Exporting in JPEG

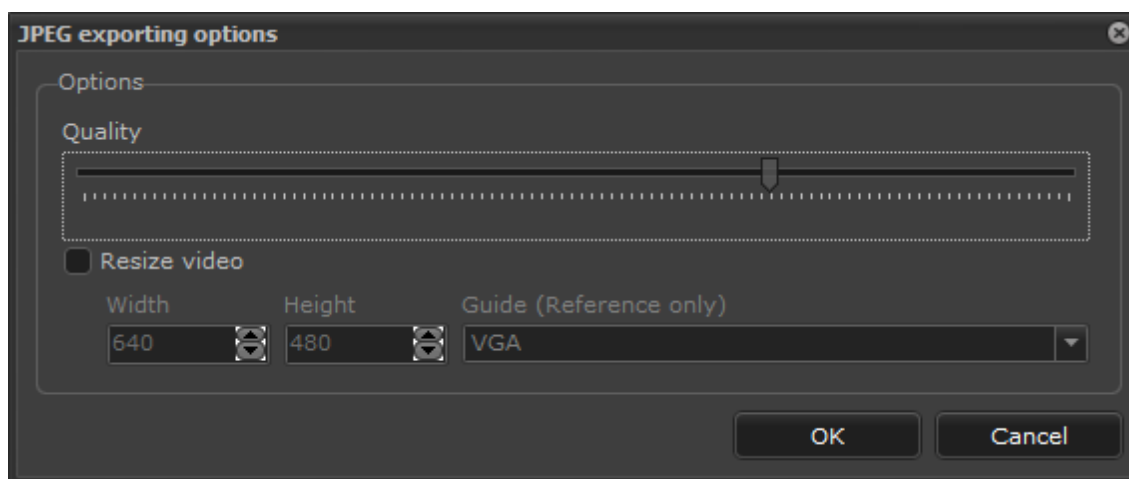
The media player now allows video export in JPEG images sequence.



In this export standard, all video frames are converted into individual JPEG images in the export folder, and can be used for example to create fast video time-lapse with any video editor since all video frames are available in separate files.

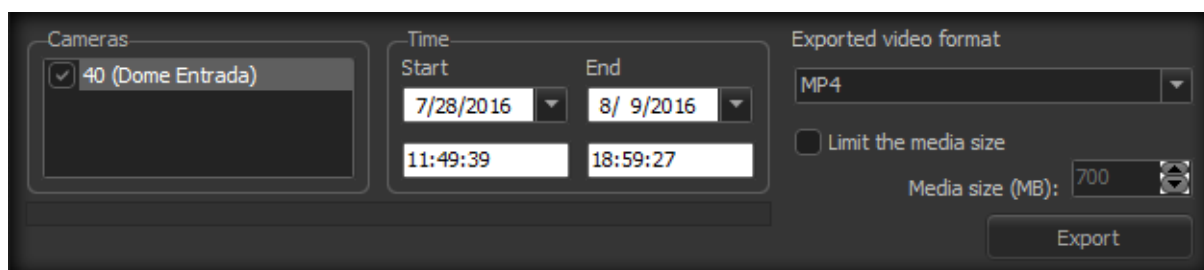
Each JPEG file will contain the original date and time of the recorded frame.

The system also allows the choice of JPEG compression quality and resize image during export



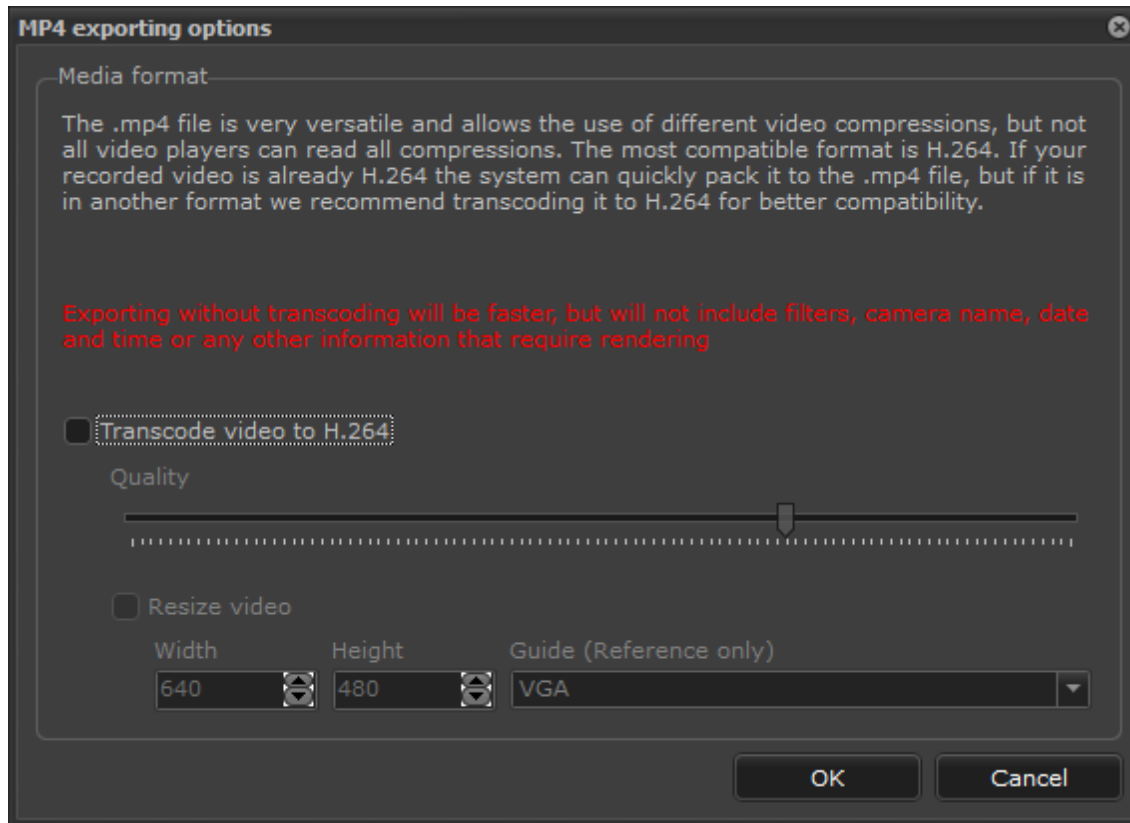
### 2.1.10 Exporting in MP4

The media player now allows native exporting to .mp4 format as a great alternative to .avi exporting



The .mp4 file format is extremely versatile and allows the encapsulation of multiple video and audio formats. The system can export video in .mp4 quickly without transcoding, packaging the original frames of video (audio will always be converted to AAC if it was recorded on another format) and providing an export without any modification of the original image data, but some formats may not be compatible with all video players (such as Windows Media Player which does not natively supports MJPEG and MPEG-4). In these cases the system allows the H.264 video transcoding (Along with AAC audio) to be compatible with most video players without the need to use special codecs, but the exporting is slower

since the video is recorded.



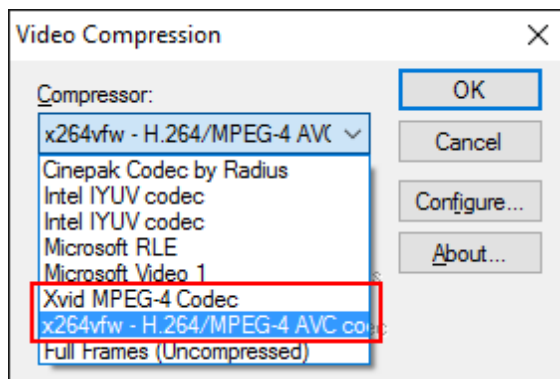
### 2.1.11 Codecs for AVI exporting

The system will now install by default 2 great codecs for using in video export:

- XviD MPEG-4
- x264

These codecs are widely used, compatible with almost all video players in the market and have excellent compression performance and quality.

The x264 codec will be selected by default when opening the export window in AVI



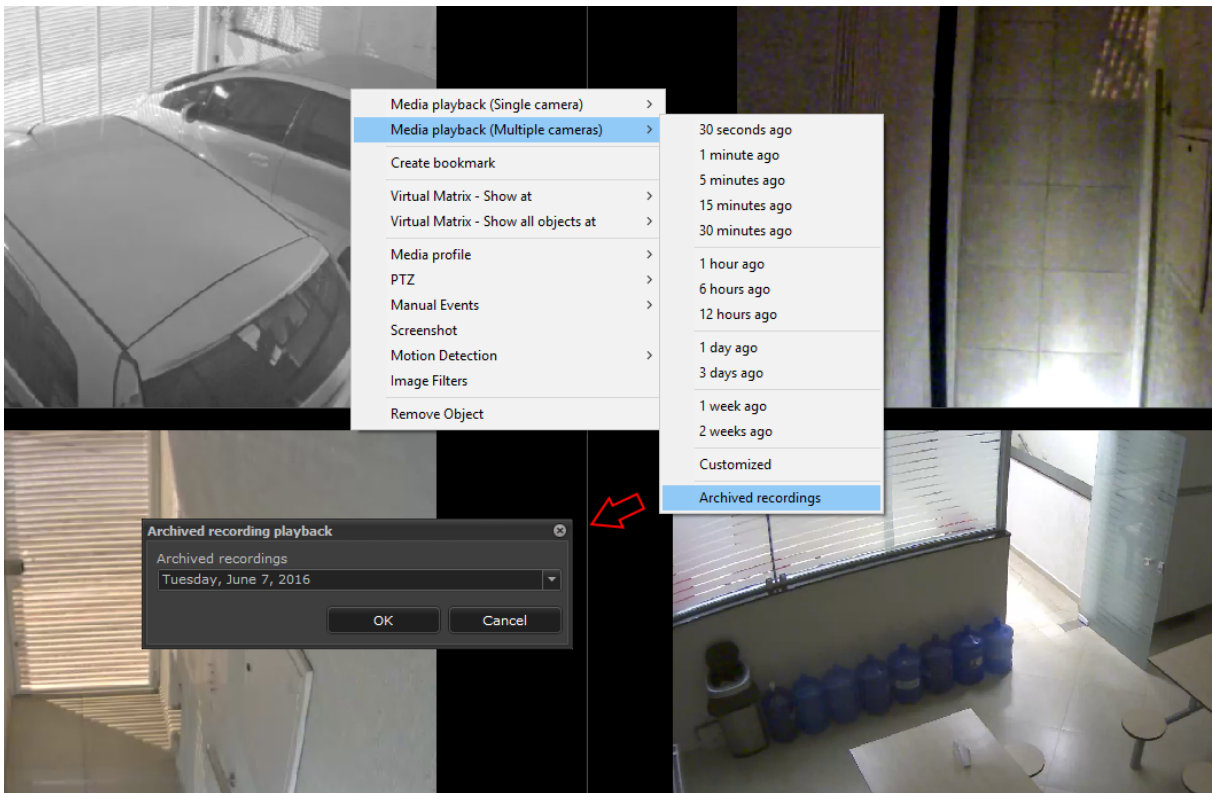
### 2.1.12 Playback of archived media

The system will now allow playback of archived footage through Surveillance Client.

Archived recordings are considered "Cold Storage" and are part of the archiving system, which can be configured to copy all recordings of previous day to another storage folder that can be located in a different storage device that usually has lower performance and lower cost.

Previously it was not possible to easily playback the archived recording, the user was required to manually select the archiving directory from Surveillance Client and the PC would have to have direct access to the archiving folder. With this new option, playback of archived media is now native to the Client.

Due to the format of archived footage, it is only possible to playback 1 archived day per media session by selecting the available archived day through date picker screen:

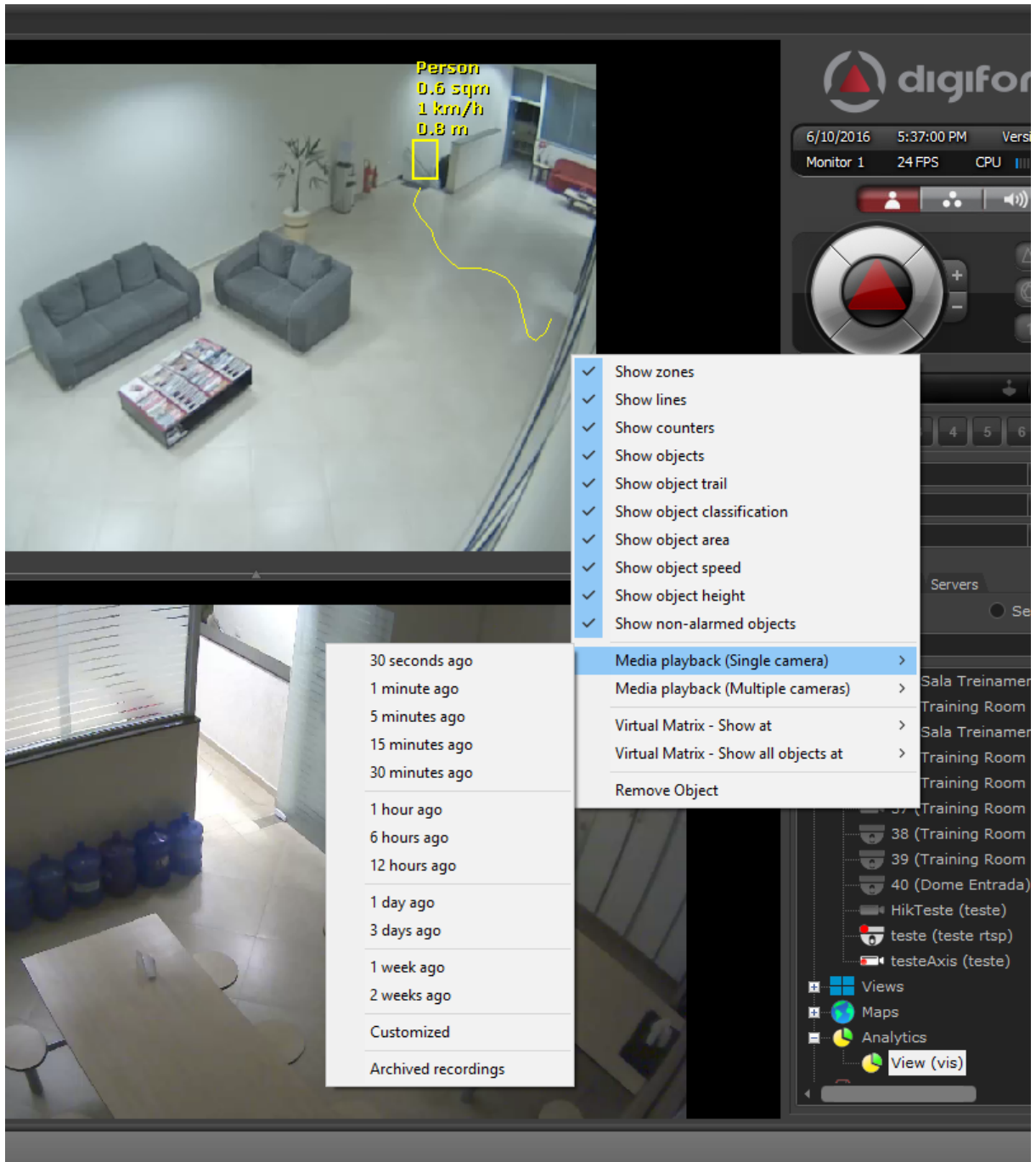


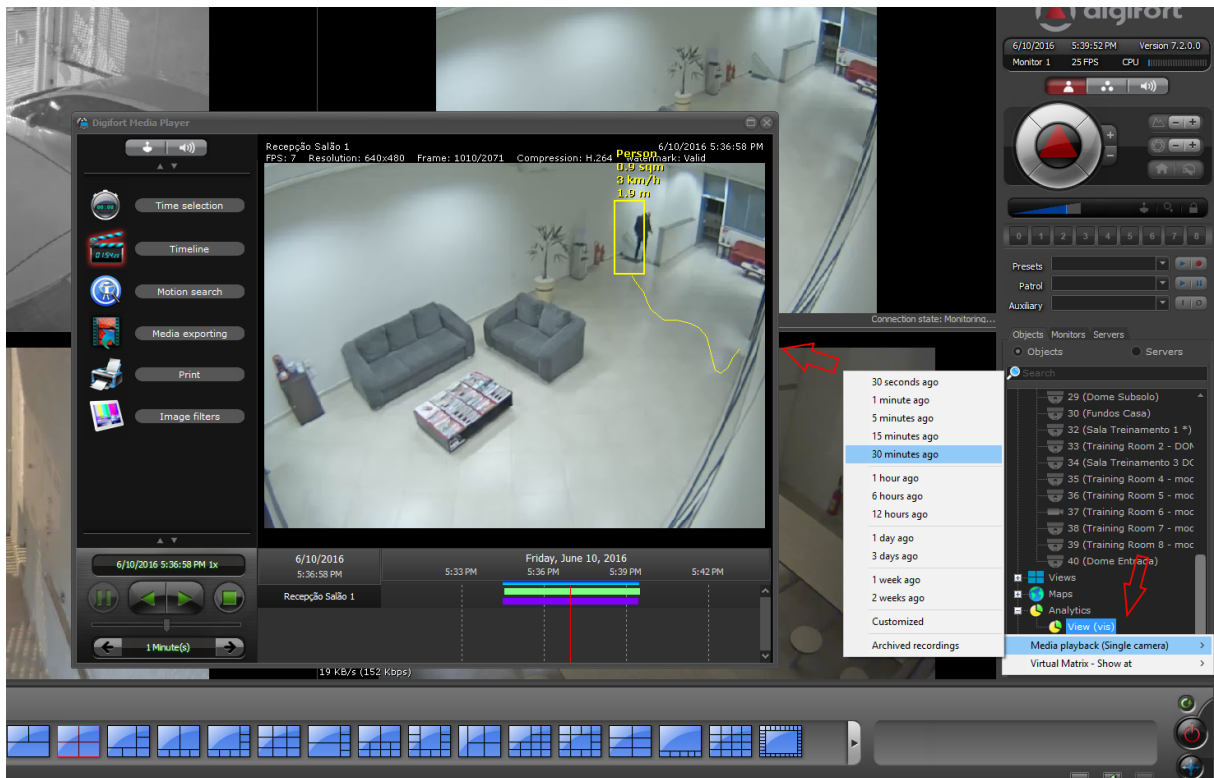
### 2.1.13 Playback of cameras from Analytics and LPR objects

In Surveillance Client it is now possible to playback video from cameras assigned to LPR or Analytics configurations by using the context menu with the right button of the mouse. In previous versions, only camera objects would offer the option for playback.

The camera assigned to the Analytics or LPR configuration will be played when selecting through these objects:







### 2.1.14 Alert e-mails with link to playback

The event action to send e-mails now allows attaching a script file that upon execution will open Surveillance Client and playback the video from cameras whose images were selected to be attached to the e-mail.

This feature will only work for the desktop version of Surveillance Client. In case the e-mail is open in a mobile device such as Apple or Android, the script file will not work.

Playback.dssf  
542 bytes



**Digifort - IP Surveillance System**  
GLOBAL EVENT - TESTE

You are receiving this e-mail as the server is configured to notify you whenever some global event is triggered.

Object data:  
Name: TEste

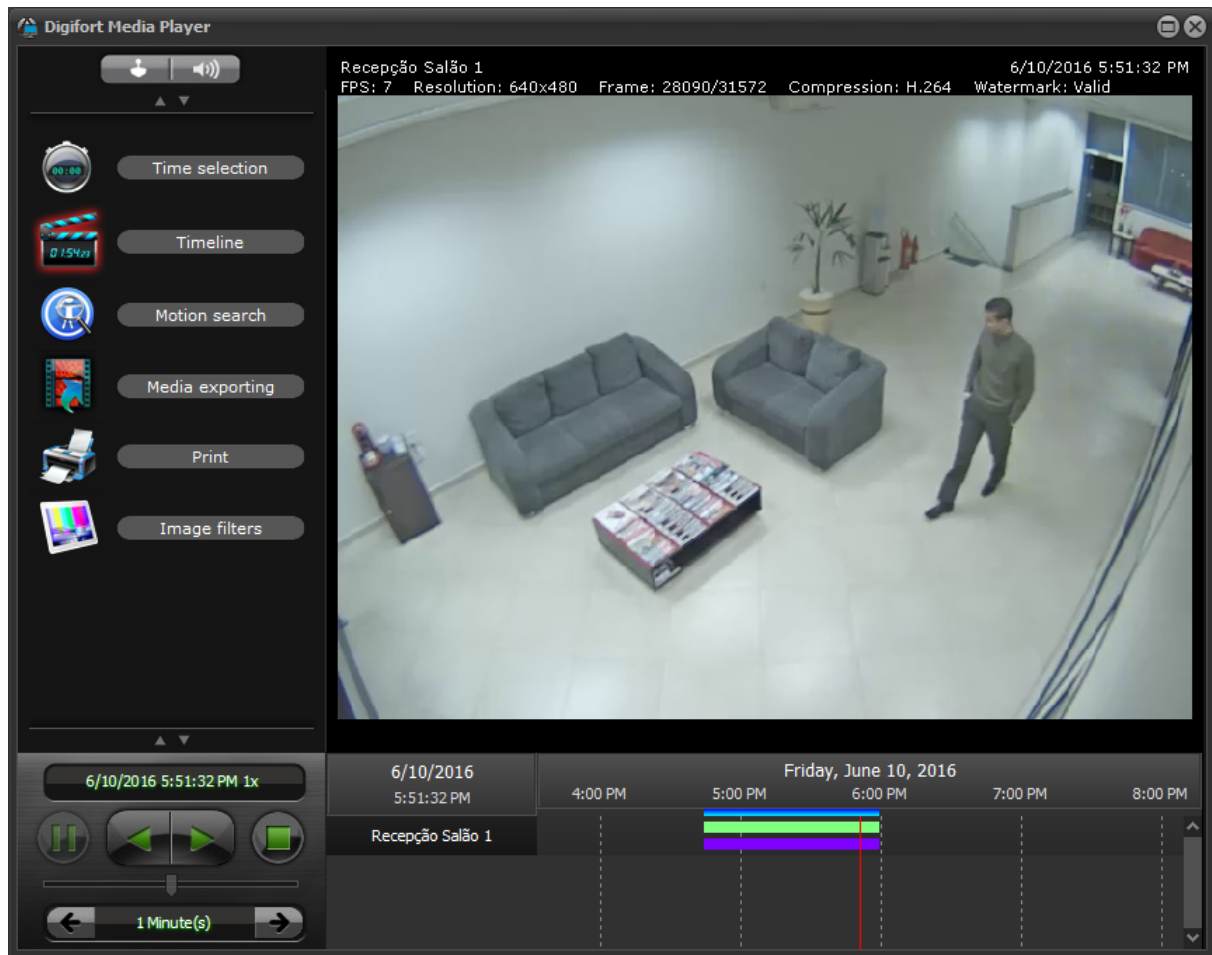
Triggered by: admin  
Station IP: 127.0.0.1

In case Surveillance Client is installed in this computer, please run the attached file to playback the video from the event

Attached pictures:

Image from camera 07 (Recepção Salão 1) from time 6/10/2016 5:51:32 PM





### 2.1.15 Alert e-mails with embedded analytics metadata

The system now allows the user to select an Analytics Configuration to send camera images in the event action to send e-mails. When an Analytics Configuration is selected, the system will send the e-mail with the camera image embedded with analytics objects metadata. Check below an example of a real e-mail that was sent:



## Digifort - IP Surveillance System

### GLOBAL EVENT - TESTE

You are receiving this e-mail as the server is configured to notify you whenever some global event is triggered.

Object data:  
Name: TEste

Triggered by: admin  
Station IP: 127.0.0.1

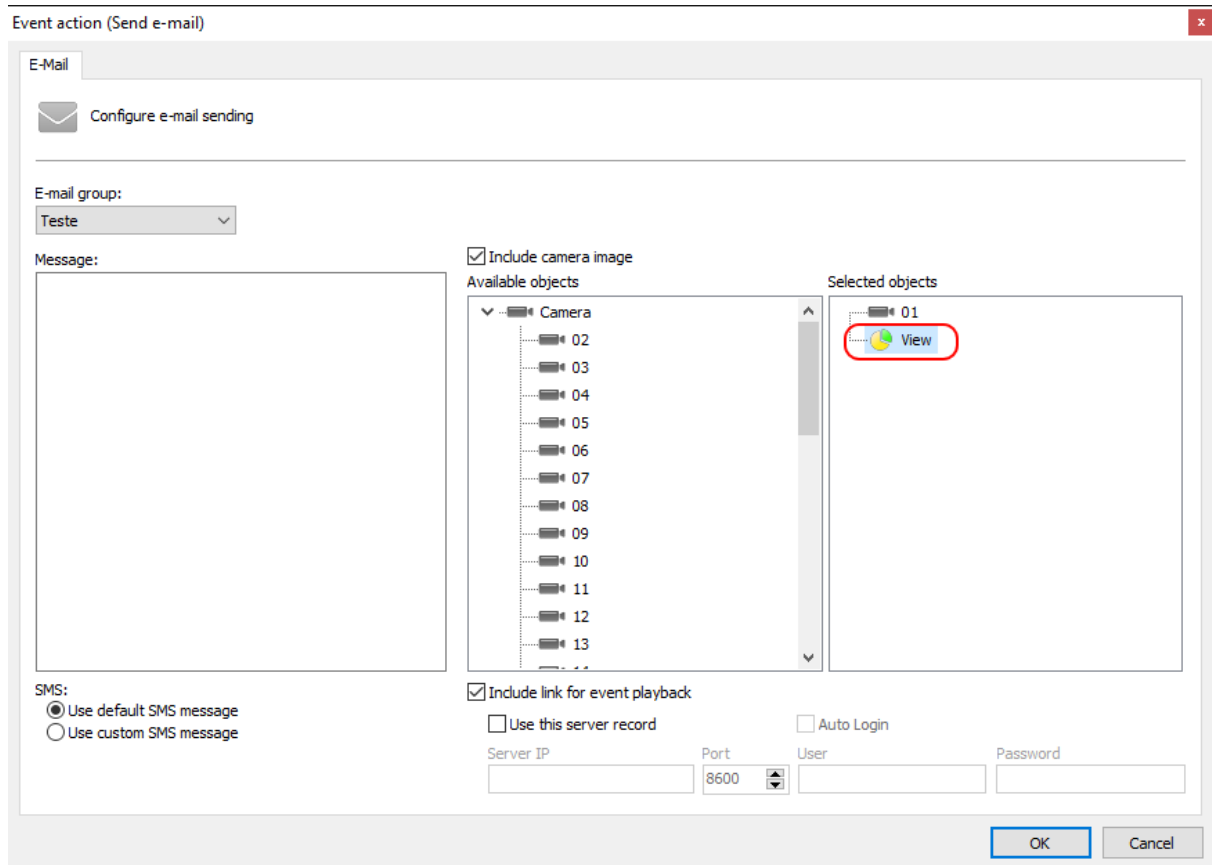
In case Surveillance Client is installed in this computer, please run the attached file to playback the video from the event

Attached pictures:

Image from camera 07 (Recepção Salão 1) from time 6/10/2016 6:02:11 PM



The settings of sending alert e-mails now allows the selection of both cameras and analytics objects:



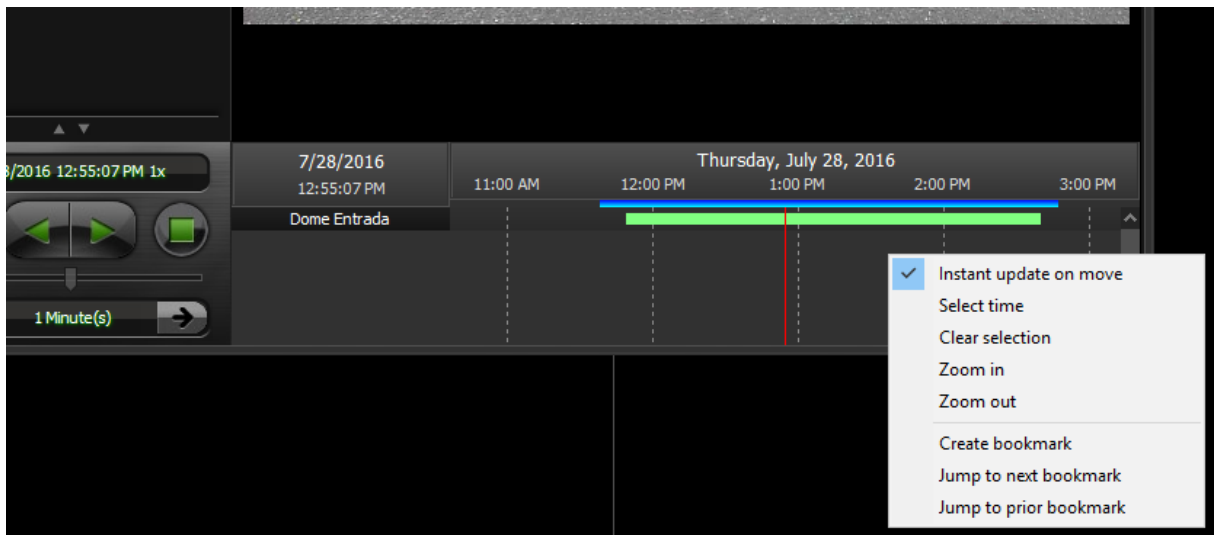
### 2.1.16 Turbo exporting

The export mode option "turbo" was removed and now will always be used by default, i.e., exporting will always be at the highest possible speed

### 2.1.17 Instant update on timeline move

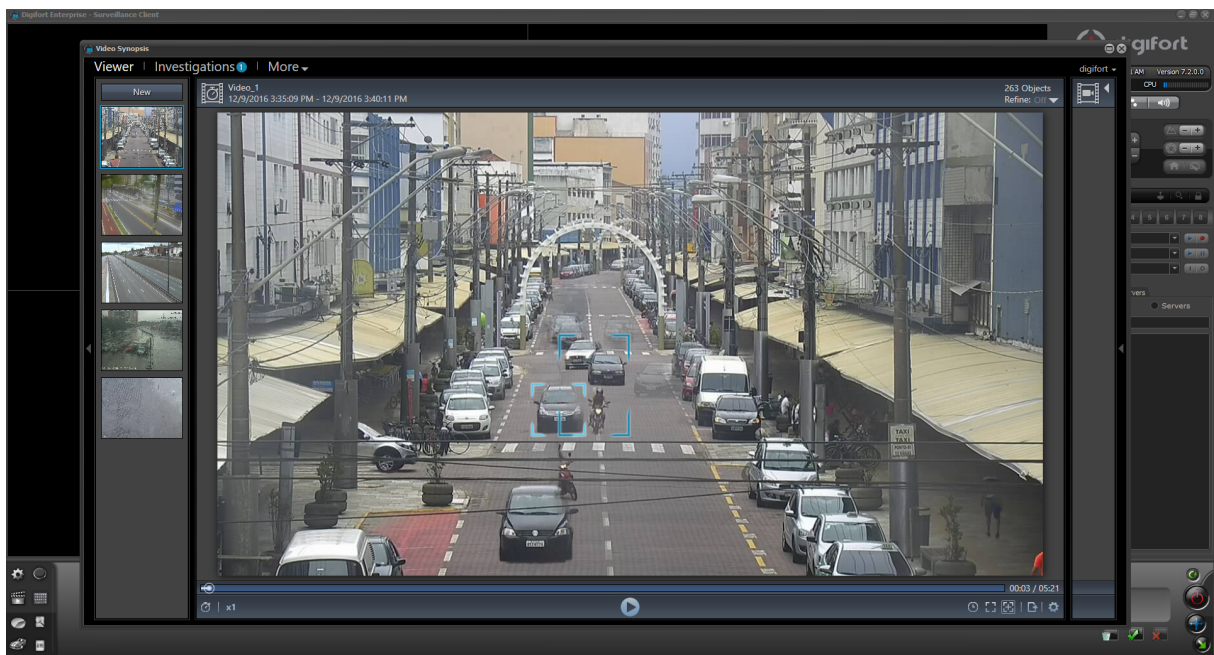
By moving the timeline in media player, by default the image update will only occur 500ms after the user stops moving it. A new option for instant update was added, with this option the image will be updated instantly by moving the timeline, which allows a quick view of events that occurred at different times by just quickly dragging the timeline (For this feature to work properly the client must be on a high performance local network).

This option will also change the behavior of the timeline by adding a drag-and-drop effect where the timeline will continue to move according to the force of movement.



## 2.1.18 Integration with Video Synopsis module

Video Synopsis module will now run inside Surveillance Client, facilitating its operation.



## 2.1.19 Printing playback images

The playback image print report will now always resize the images, maintaining the original scale, to fill the report space.



## Digifort - IP Surveillance System

### Security image report



#### Image details

Camera	40 (Dome Entrada)
Date and time of capture	1/10/2017 7:05:55 AM
Operator name	eric (Eric Fleming Bonilha)
Date and time of printing	1/10/2017 2:34:24 PM

#### Operator notes

Authentication code



C87A-04C0-D59B-5443-119F-C87A-8454-3AFB

Digifort - IP Surveillance System

Page 1 / 1



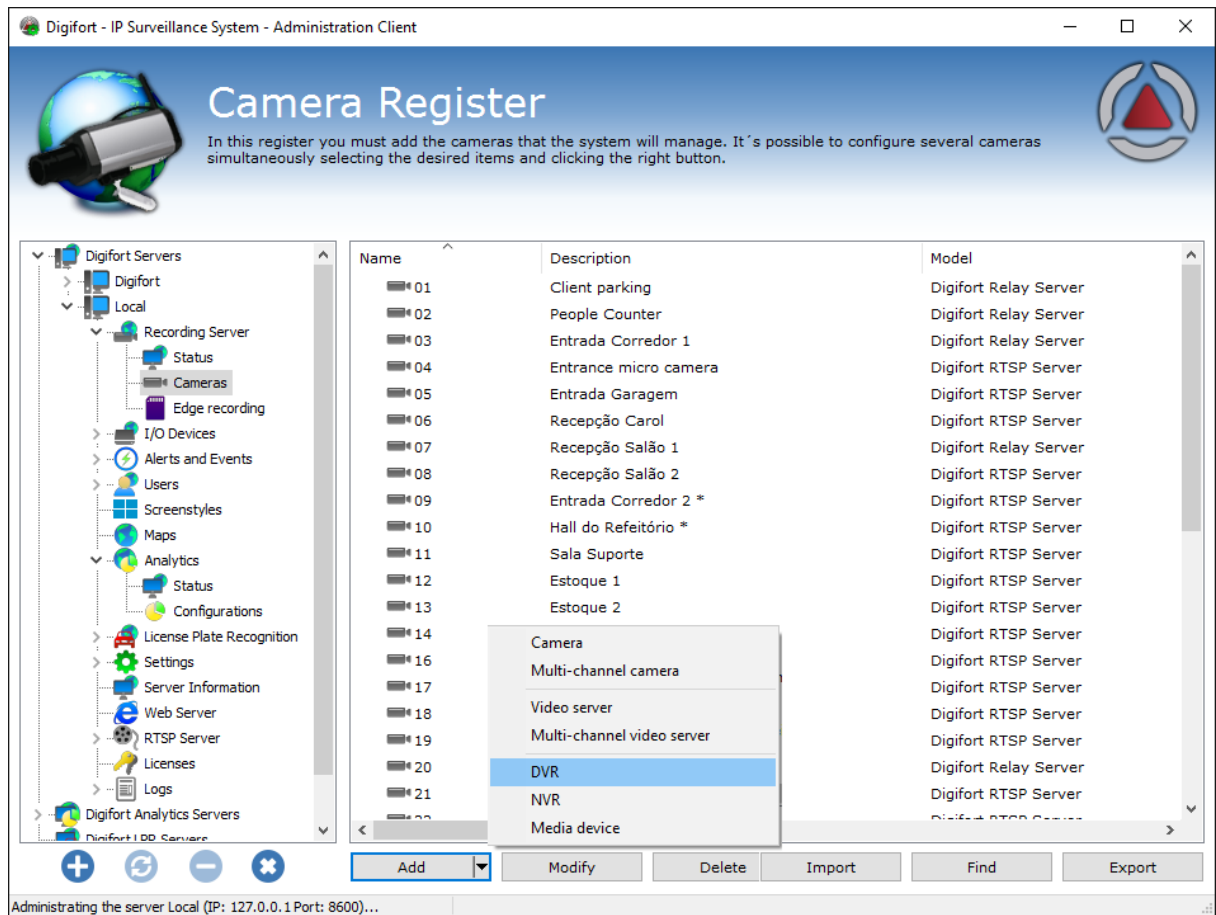
## 2.1.20 Privacy Mask with blur

The Privacy Mask feature now allows blurring areas of image option instead of a black rectangle covering the area.



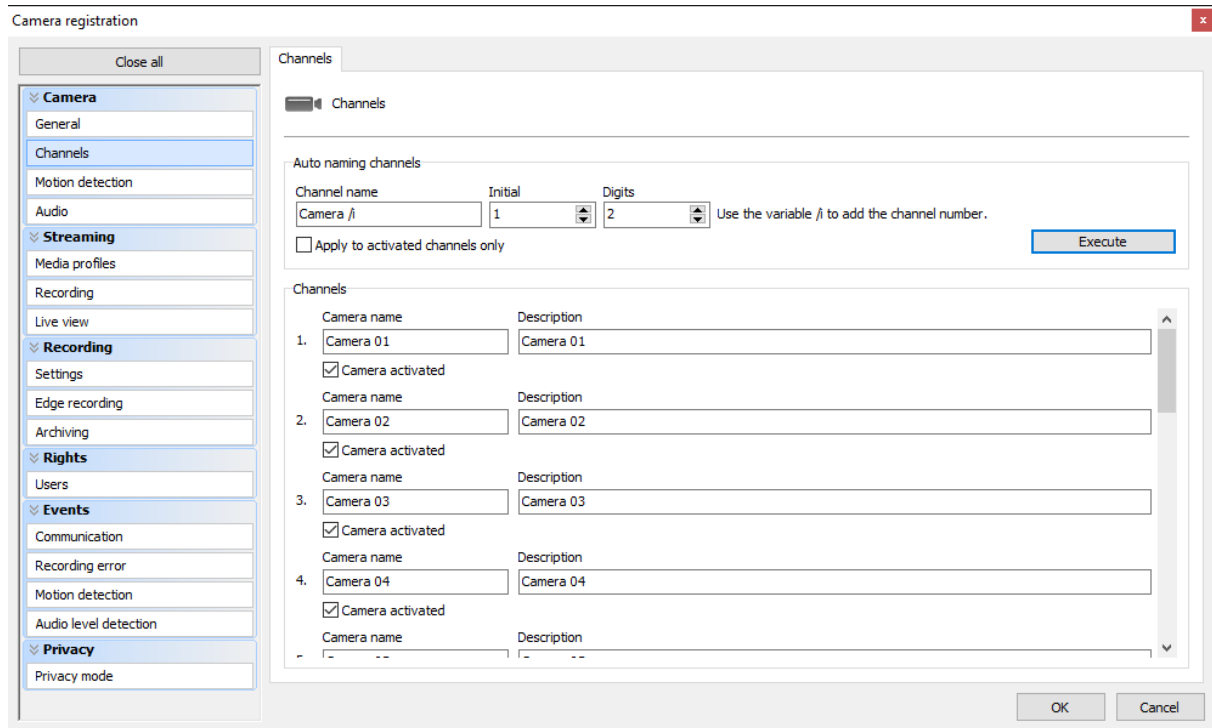
## 2.1.21 Easy registration of multi-channel devices

A new option to automatically register multiple channels of a multi-channel device such as DVR, NVR of multi-lenses camera was created.



A new option in the button to add new devices now allow the selection of multiple types of devices such as DVR, NVR and multi-channel cameras. When one of these options is selected, the system will filter the device database and will only display the devices matching the desired type in the screen to register the device as a way to ease the selection of device model.

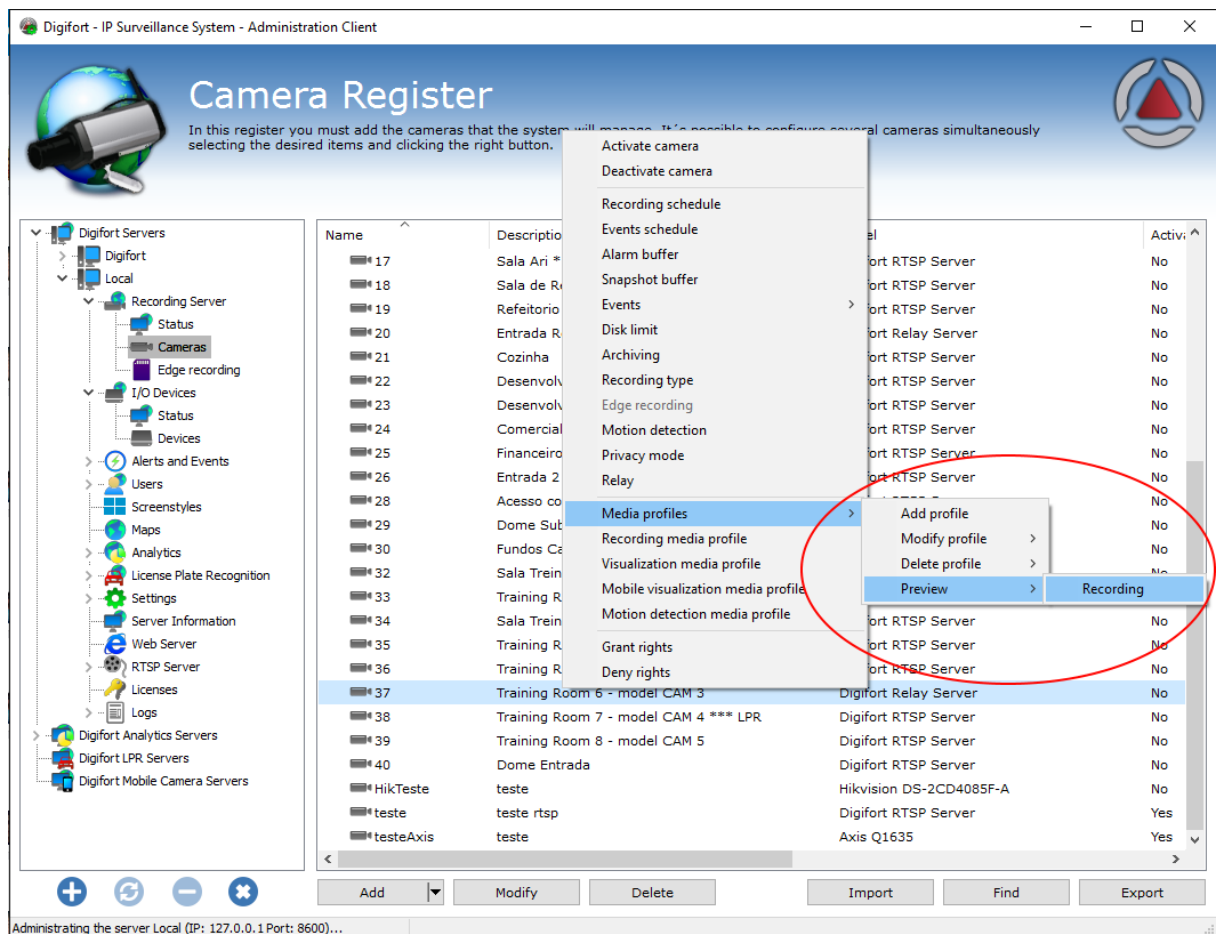
During the registering of a multi-channel device, some tabs will not be available (Tabs that are strict specific to each channel), e a new tab named "Channels" will be displayed to allow the individual naming of each device channel. An auto-naming tool is also provided in this screen, to help naming multiple channels.



All settings configured during the registration of multiple channels will be applied to all registered channels. Specific settings such as PTZ or I/O will have to be later adjusted to each registered channel.

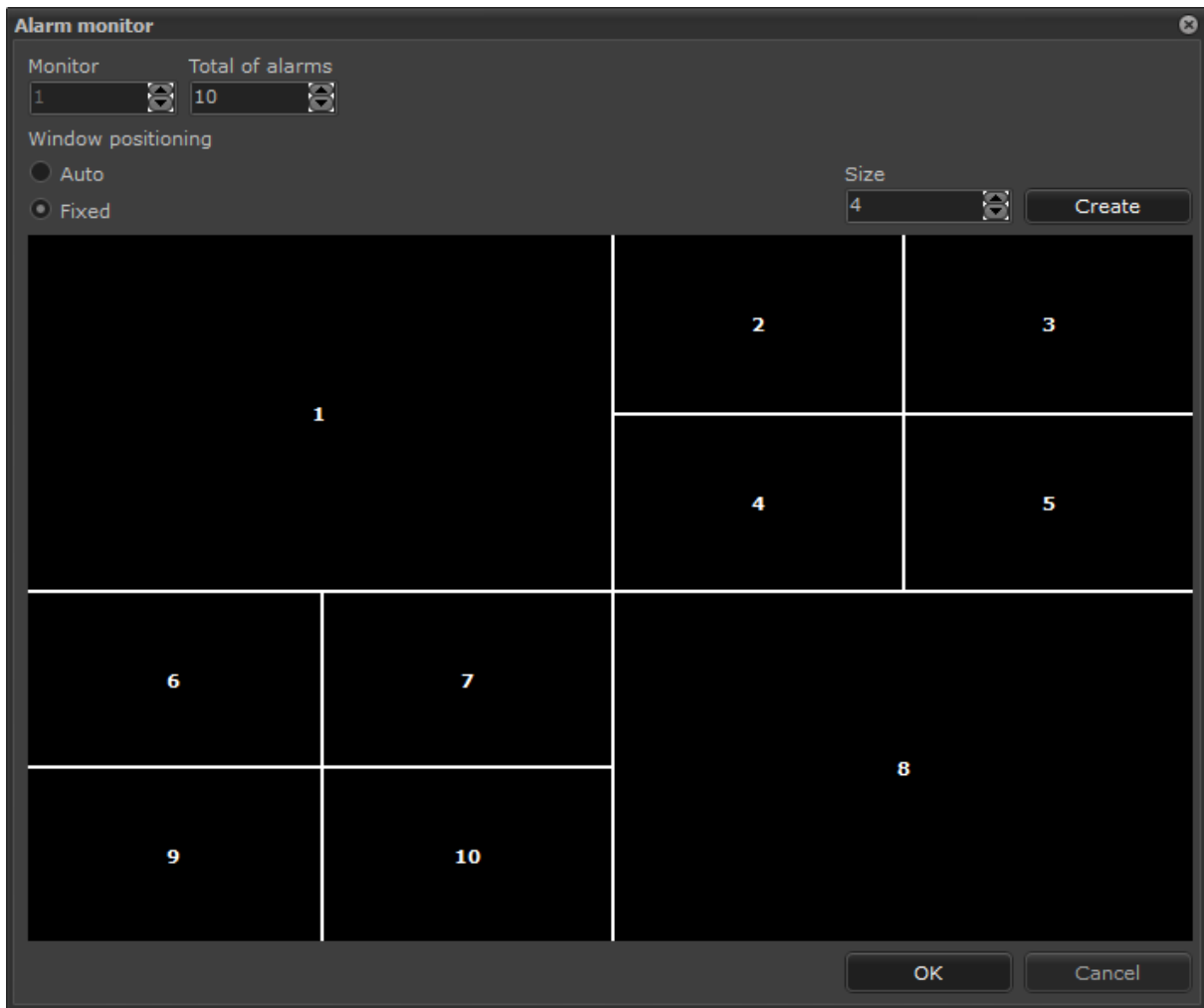
### 2.1.22 Image preview on camera registration

In the camera registration screen it is now possible to preview the image of a media profile without opening camera registration, by using its context menu:



### 2.1.23 Customized positioning of alarm screens

It is now possible to customize how the alarm windows are organized on a monitor in the Surveillance Client, previously the windows were automatically positioned.



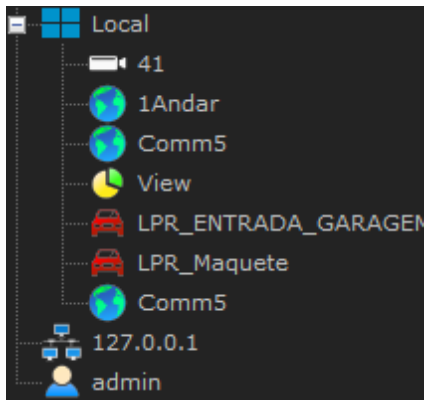
#### 2.1.24 Displaying the name of objects on virtual monitor

When sending an object to the Virtual Matrix the system will now display the name of the objects currently being displayed on the selected monitor of the matrix



### 2.1.25 Status of objects in the list of virtual matrix monitors

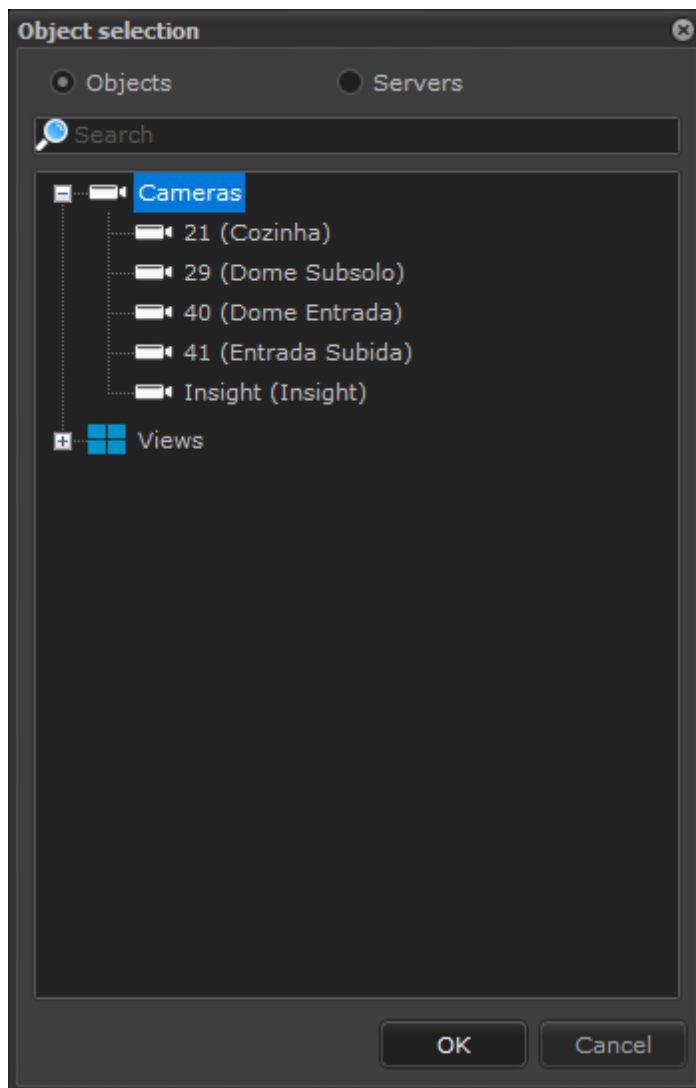
The Virtual Matrix monitor list in the Surveillance Client will now display the list of objects being displayed on the monitor



### 2.1.26 Object selection on media player

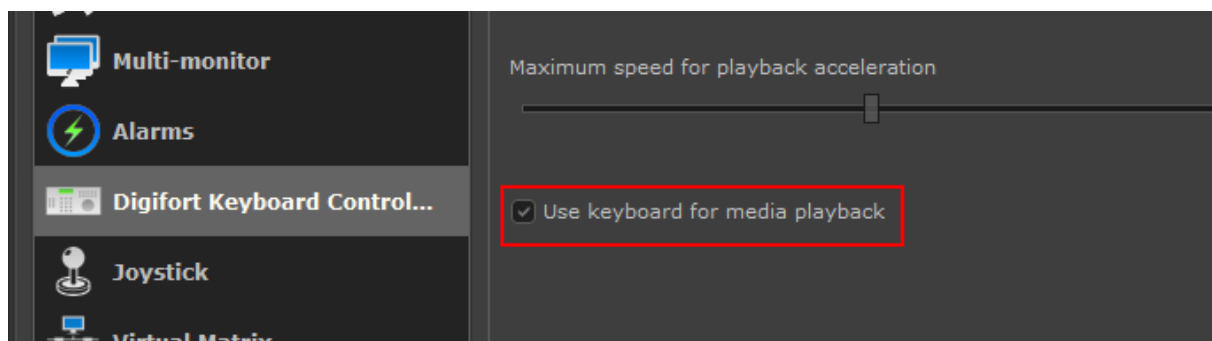
Media Player now allows searching by name of objects for playback.

The selection of views will now also follow the configuration of the Surveillance Client to display the views only from the selected layout or all views.



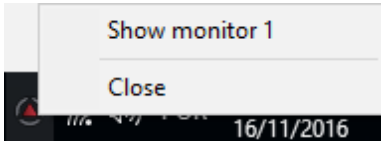
### 2.1.27 Disable the use of keyboard controller for playback

The Surveillance Client now allows you to disable the use of the Digifort keyboard controller for media playback. When the media player is opened the keyboard controller will continue to work for the selected live camera, sending PTZ controls to this camera instead of controlling the media player.



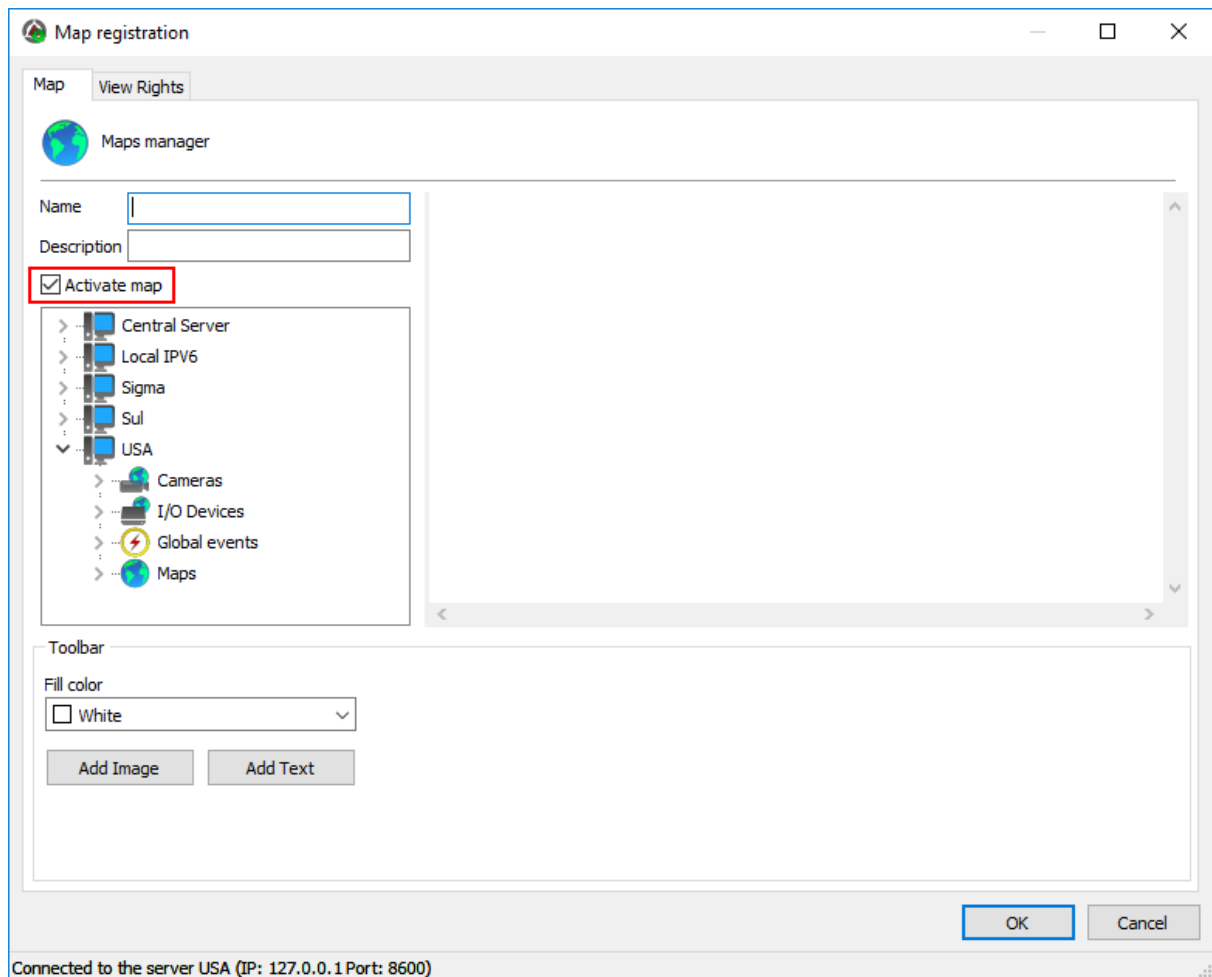
### 2.1.28 Close minimized Surveillance Client

Added option to close Surveillance Client when it is minimized in System Tray



### 2.1.29 Activation or Deactivation of maps

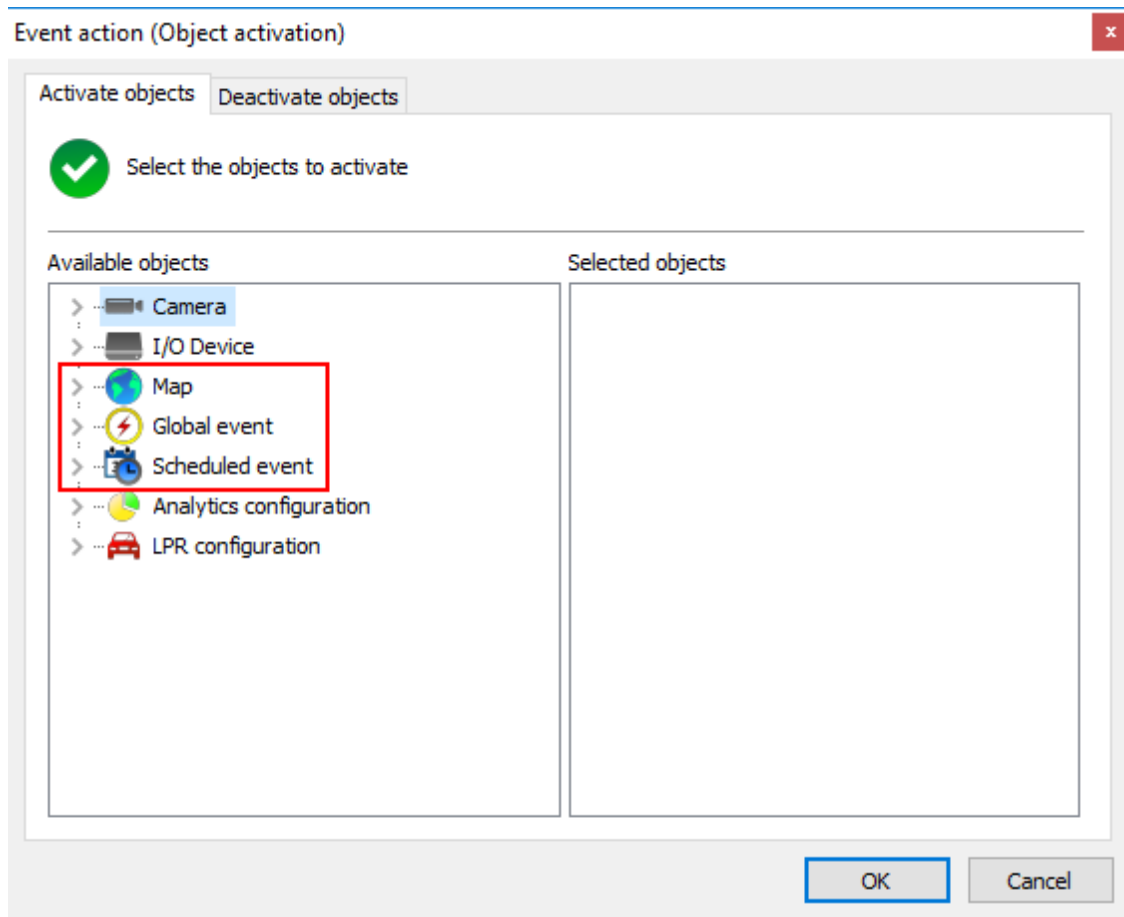
The system now allows deactivating (or activating) maps.



### 2.1.30 Event action to activate objects

The event action to enable / disable objects now allows you to control maps, global events, and scheduled events.





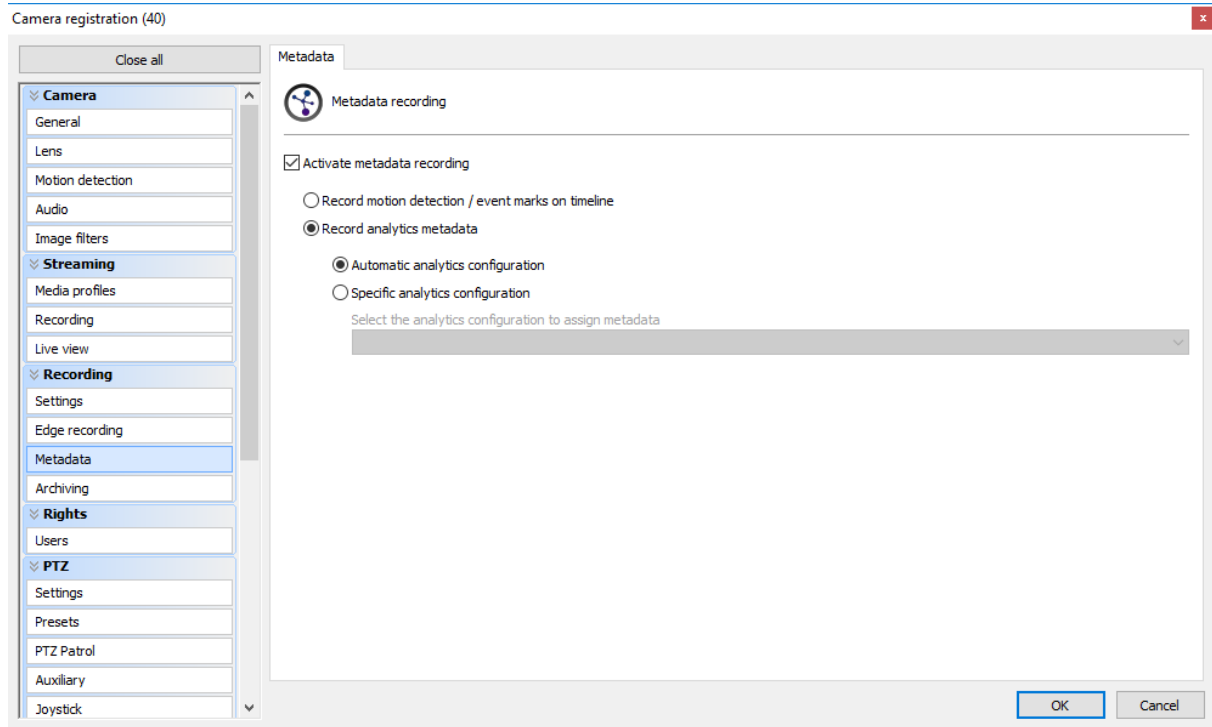
### 2.1.31 Changing connection data for multiple cameras

The Administration Client now allows you to change the connection data (Address, Authentication and Timeout) of multiple cameras simultaneously.

21	Cozinha	Digifort Relay Server	-
29	Activate camera	P5522	5.15
40	Deactivate camera	fort RTSP Server	6.7.0
41	Recording schedule	fort Relay Server	-
ins	I/O Scheduling	fort InSight	1.0.0
/iv	Alarm buffer	tek SD9161-H	0100
	Snapshot buffer		
	Connection	> Address	
	Events	> Authentication	
	Disk limit	Timeout	
	Archiving		
	Recording time		

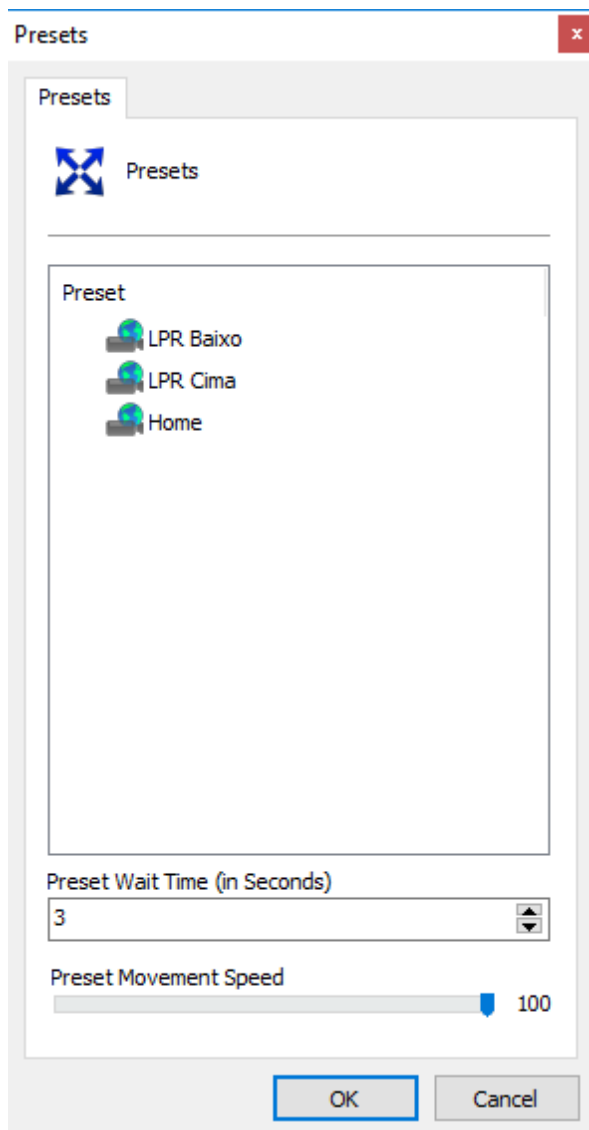
### 2.1.32 Automatic recording of metadata for analytics

The system now allows the recording of automatic analytics metadata, where the system will record the first analytics configuration that is in operation associated with the camera. This enables the recording of analytics metadata for PTZ cameras with different analytics settings in different presets.



### 2.1.33 Add multiple presets to patrol

It is now possible to add multiple presets simultaneously to a PTZ Patrol profile through the Administration Client. Previously the presets should be added individually.



### 2.1.34 Recorded days in system report

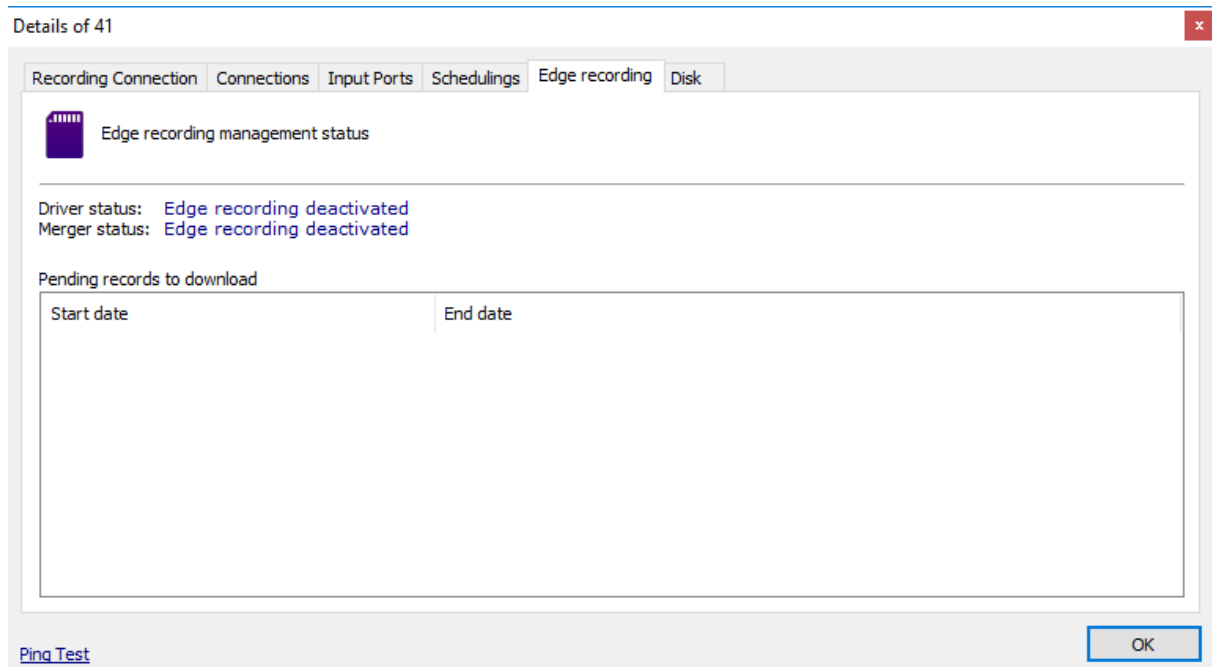
The periodic server report will now include the amount of days recorded and estimated recording of each camera system.

Camera: 40  
Description: Dome Entrada  
Active Time: 0 Hour(s), 2 Minute(s) and 34 Second(s)  
Recorded video frames: 4356  
Recorded audio frames: 0  
Limit: 132,874 MB  
Recorded days: 10 Day(s) and 21.1 Hour(s)  
Recording estimative: 359 Day(s) and 22.8 Hour(s)  
Bytes written: 1,862,729 Bytes - 1 MB  
Used disk space: 4,211,228,635 Bytes - 4,016 MB

Camera: 41  
Description: Entrada Subida  
Active Time: 0 Hour(s), 2 Minute(s) and 34 Second(s)  
Recorded video frames: 1073  
Recorded audio frames: 0  
Limit: 49,247 MB  
Recorded days: 10 Day(s) and 21.1 Hour(s)  
Recording estimative: 360 Day(s) and 1.4 Hour(s)  
Bytes written: 1,810,648 Bytes - 1 MB  
Used disk space: 1,560,851,905 Bytes - 1,488 MB

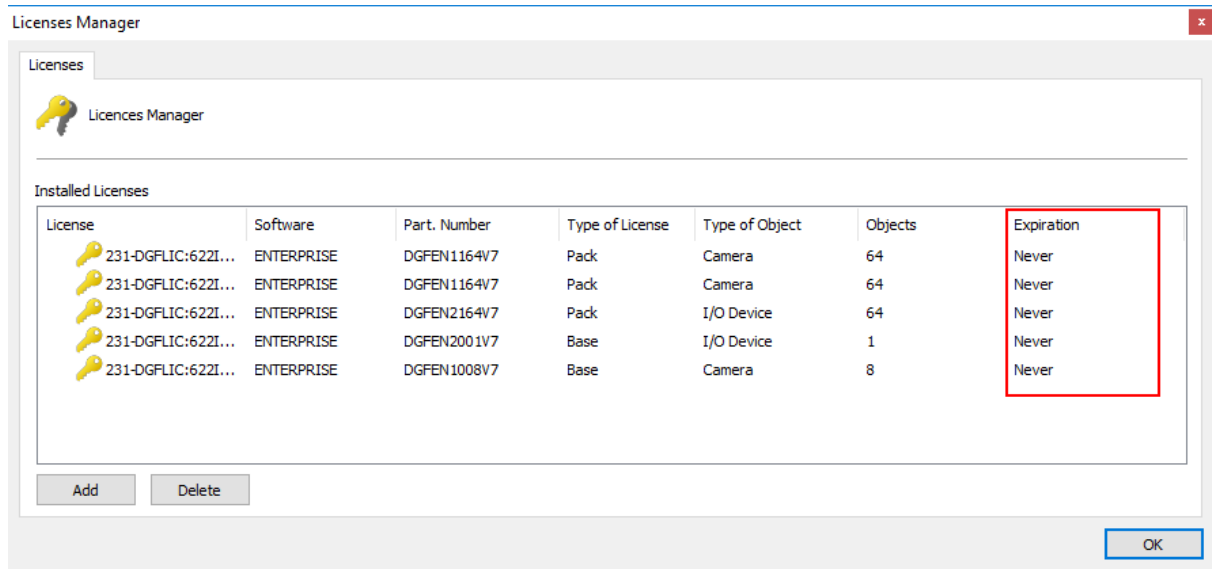
### 2.1.35 Remove multiple edge recording jobs from a camera

It is now possible to remove multiple edge recording jobs simultaneously through the Administration Client.



### 2.1.36 License expiration field

Added a field for viewing the license expiration in the license manager of the administration client.



### 2.1.37 New LPR engine

A new LPR engine (Neural Labs) was added to the system. This is an alternative to the Carmen engine and has excellent performance and quality recognition.

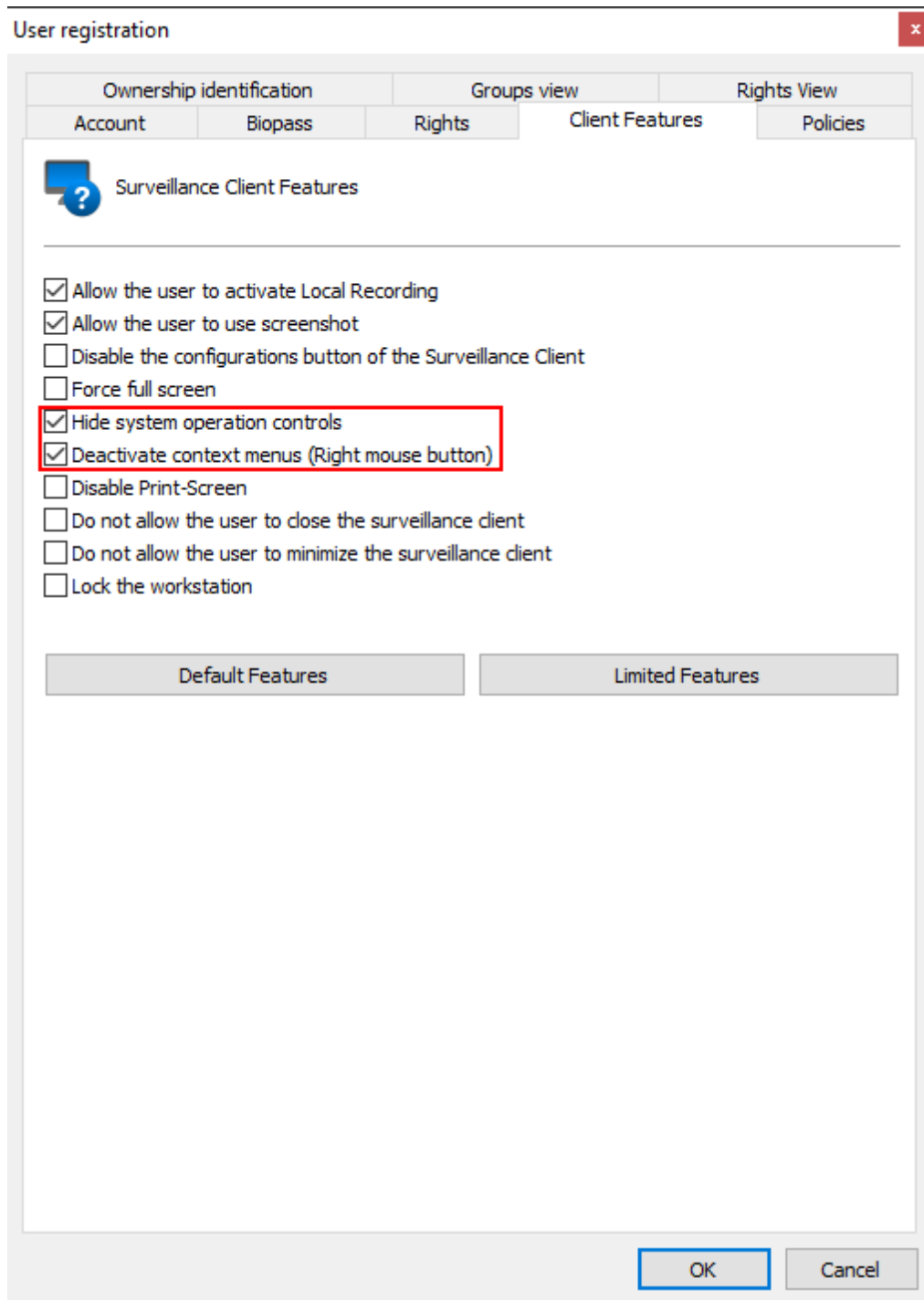
### 2.1.38 New Surveillance Client restrictions

Added two (2) new restrictions for Surveillance Client usage per user or group of users:

**Hide system operating controls:** This option will cause the Surveillance Client to operate in "full screen" mode, ie the camera view matrix will be expanded and the user will not have access to any operation control, getting restricted to the camera preview screen.

**Disable context menus:** This option will disable the use of menus accessible via the right mouse button, further blocking the operator access to the system.

Together, these two options can be used to completely block the operator access to any operation except viewing live cameras.



### 2.1.39 Event to cancel a timer

The timer event is now more flexible and can be canceled by another event before its trigger occurs, allowing such operations as "door open too long" to trigger an alarm if a door has been left open

Timer Event

Timer event settings

Event Name

Event Description

This event occurs after: (Seconds)

5

Configure the actions to be executed in case of the event:

Configure Actions

Cancel timer on event

Event to cancel timer

OK Cancel

#### 2.1.40 Surveillance Client operation buffer

Some operations on the Surveillance Client will generate a temporary buffer on the computer to speed up its performance.

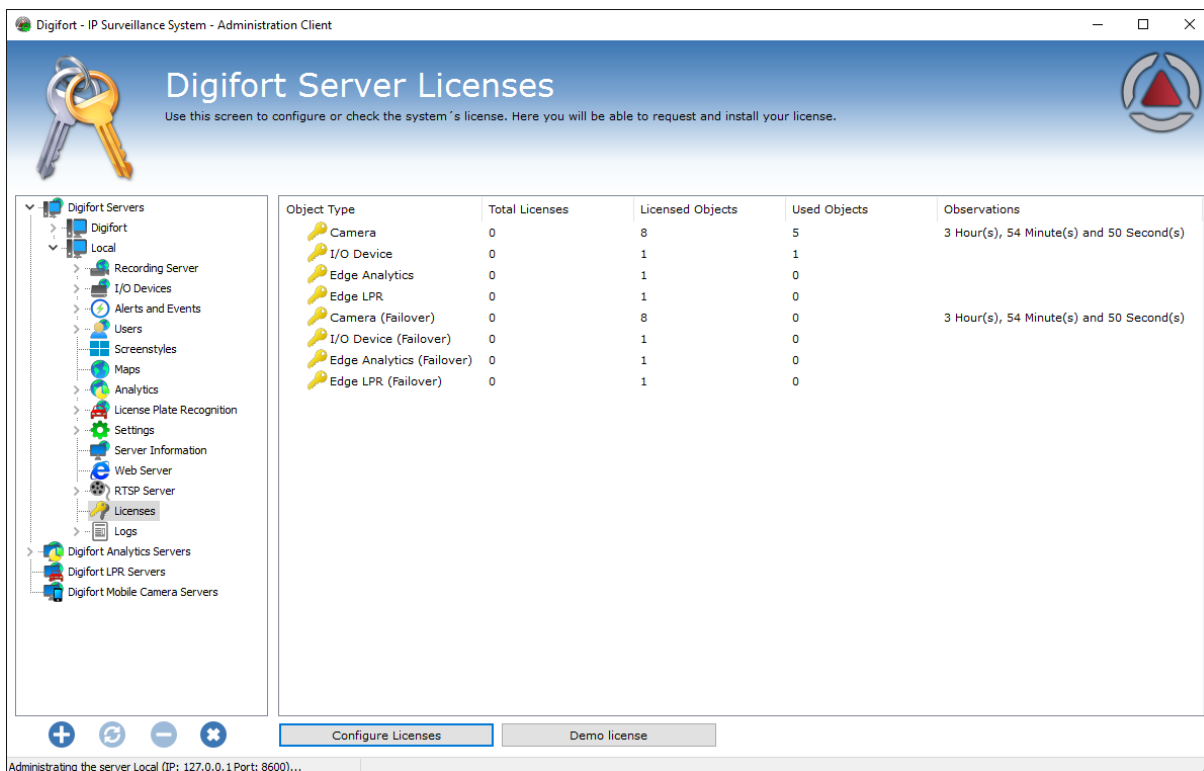
Video playback for example will temporarily write to disk all the images received for quick access if the operator wishes to re-watch portions already downloaded, with this the client will not need to download the image again, saving server and network resources. After playback is complete, these temporary files will be deleted.

Downloaded maps are saved so it will not be downloaded again in the future, saving time and bandwidth during the connection process with the server.

This feature was already available in the system in previous versions, but the buffer was written in the installation folder of Surveillance Client that by default is the Program Files and the system can not write to a subfolder unless running in Administrator Mode, rendering the feature useless. To improve this behavior the buffer will now be recorded to a temporary subfolder %TEMP%\Digifort allowing proper use by the system and improving its performance.

#### 2.1.41 New licenses summary screen

A new licenses summary screen was developed to improve the visualization of available and used licenses per object type:



### 2.1.42 Verification of offline devices

For cameras configured to not record or record upon events, the system was not able to check if it was working or not due to the fact that no connection was established to the device. A new verification routine was added for this specific scenario. In this new method, the system will check if the camera is working in an interval of 1 to 3 minutes, if the camera does not reply to the request, the system will consider that it is not working.

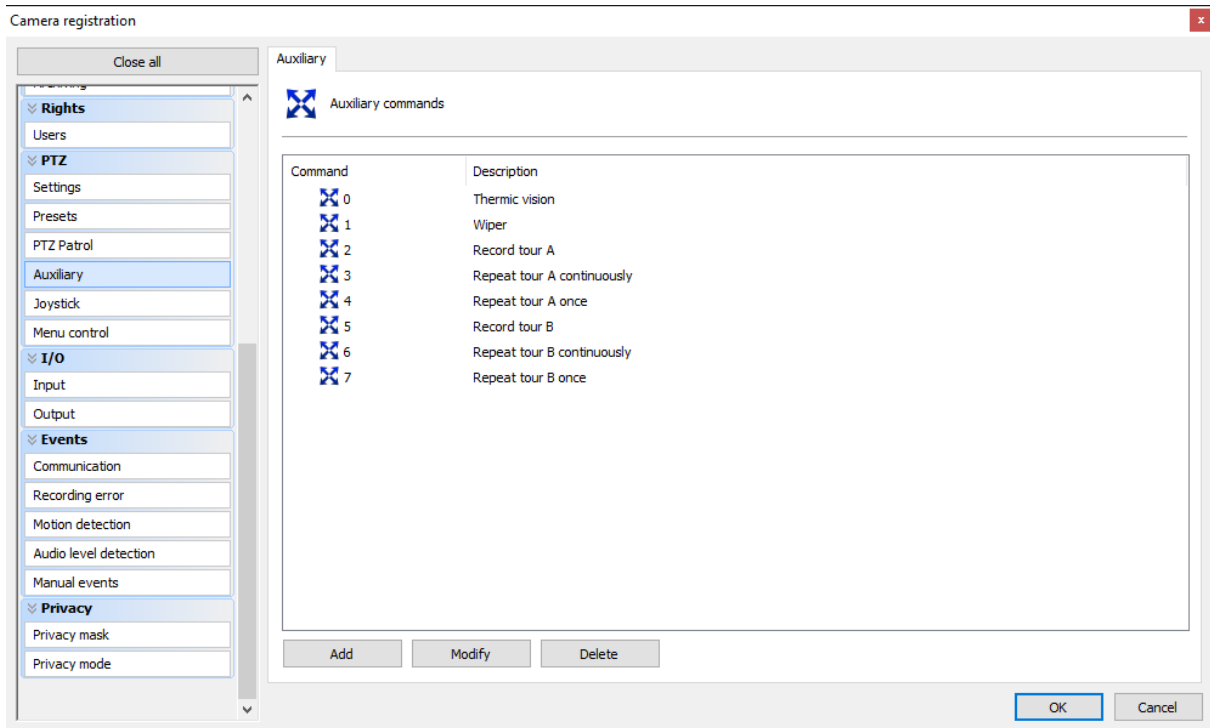
### 2.1.43 Audio recording on motion detection

The behavior of audio recording when camera is configured to record by motion detection was changed. Previously the system would record the audio track continuously, regardless of motion being detected or not, now the system will record audio only when motion is detected, keeping both audio and video tracks synchronized.

### 2.1.44 Pre-registered PTZ auxiliary

Some PTZ cameras provides auxiliary commands to access some specific functions. For this cameras the system will now provide a pre-registered list of auxiliary commands that are natively supported by the driver.





### 2.1.45 Improvements to RTSP Server

- A new internal media buffer was implemented in the RTSP Server to improve the transmission of media in connections slower than the original camera bitrate
- Transmission of MJPEG over RTSP now uses less server memory

### 2.1.46 Improvements to recording and timeline reading

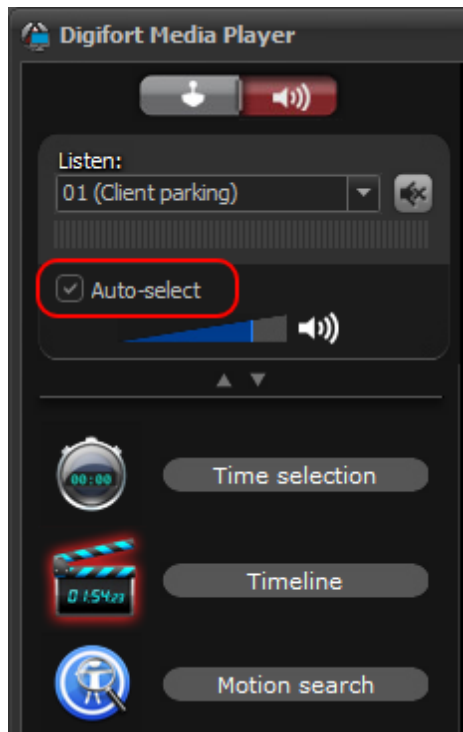
The reading of media recordings and timeline during a media playback was extremely optimized. A new data caching system was implemented which prevents multiple accesses to the disk, drastically increasing the recording reading performance, timeline loading time and significantly decreasing the workload of the storage HDs during the process of media playback.

During the tests of the new implementation, in a media playback of 16 cameras recording at 30 FPS with audio, the system would require about 2400 I/Os per second for data reading, now this value was reduced to 32 I/Os at each 20 to 30 seconds depending on the size of recorded data.

The playback process will no longer affect the performance of recordings (When using low-performance storage).

### 2.1.47 Better audio control in playback

As the control for live audio, now the audio control of media player also provides the option for "Auto-select"




### 2.1.48 Playback time in audit records

The record for media playback in system audit will now inform the initial and final date/time of the media session. With this information it is now possible to identify exactly the period of time of which an operator visualized the recordings.

Audit record details

Details

 Audit record details

Record date	User	IP	
6/11/2016 3:27:46 PM	admin	127.0.0.1	
Event	Object type	Object name	Category
Started	Media playback	20	User action

Complement

Initial date: 5/28/2016 3:27:46 PM. Final date: 6/11/2016 3:27:46 PM.

Close

### 2.1.49 Better management of server connections in Surveillance Client

The management of Digifort server connections in Surveillance client was improved.

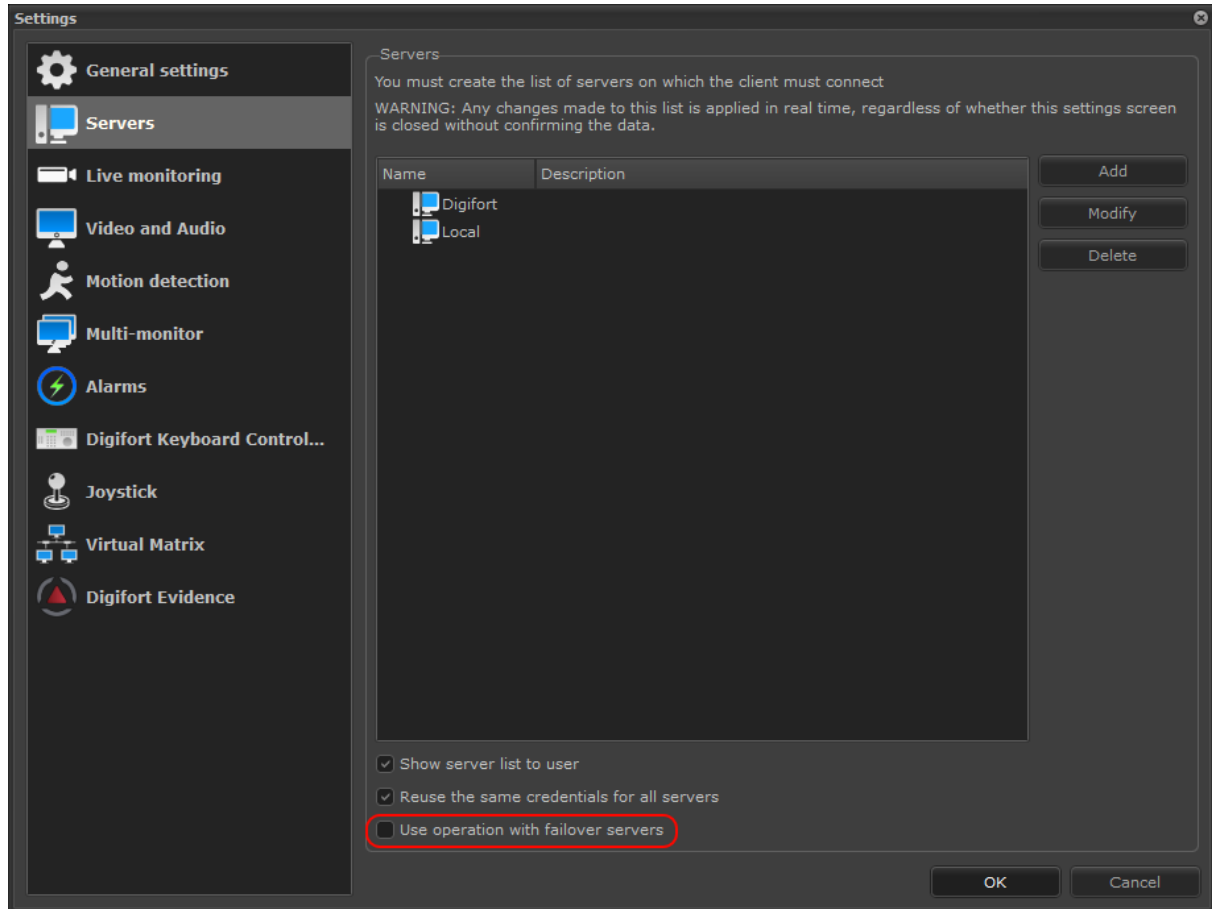
Previously, when a connection to the server was lost, the objects from this server was removed from Surveillance Client and a screen refresh was performance, causing a "flicker" to the user. This effect could be more evident in installations where the Surveillance Client would have to connect to multiple remote servers with bad internet connection.

Now, in case of communication failure, the system by default will no longer remove the objects of this server from the screen and will no longer refresh. When the connection is re-established, the objects on screen will be updated (only the objects of the affected server) and this will provide a much better experience to the operator.

### 2.1.50 Failover operation option

A new option to activate the operation with Failover servers was added to Surveillance Client. Activate this option in case Surveillance Client has to connect to a Failover server. This option will reactivate the old system behavior in case of communication failure to the server (usually due to server failure), the system will remove the objects of this server from the client so it can load the correlated objects from

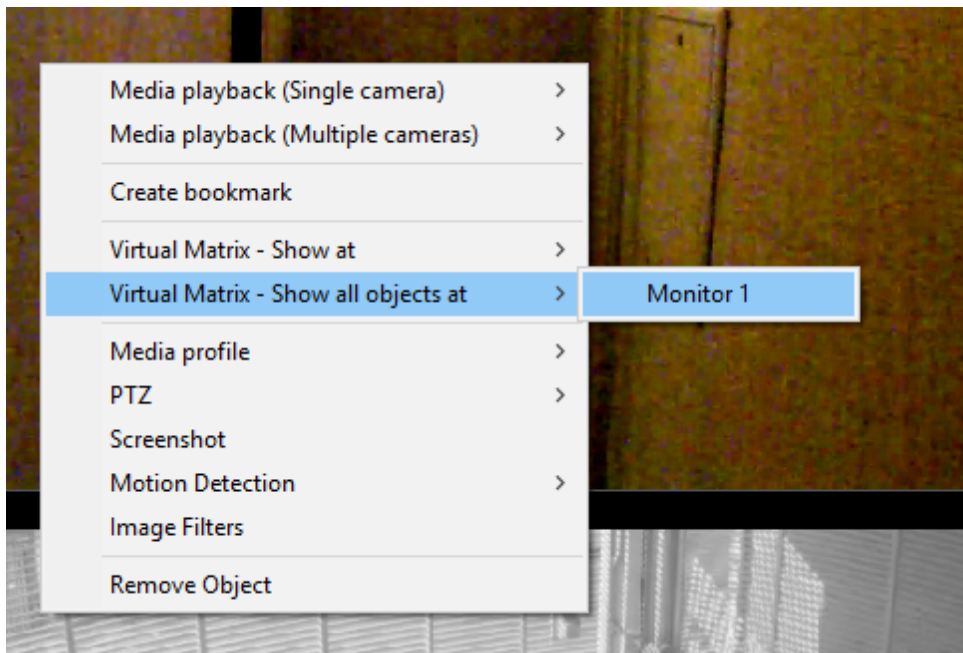
Failover server, assuring a smooth transition to the new server in case of system failure.



### 2.1.51 Send multiple objects to Virtual Matrix

This new option of Virtual Matrix allows sending all objects on the screen along with its configurations (Current media profile, zoom position, 360 lens position, image filter and motion detection).

This option is available only for current objects on screen. Upon clicking with the right button of the mouse on any object (or on an empty screen) the option to "Show all objects at" will be provided. The view should **not** be saved for this option to be used.

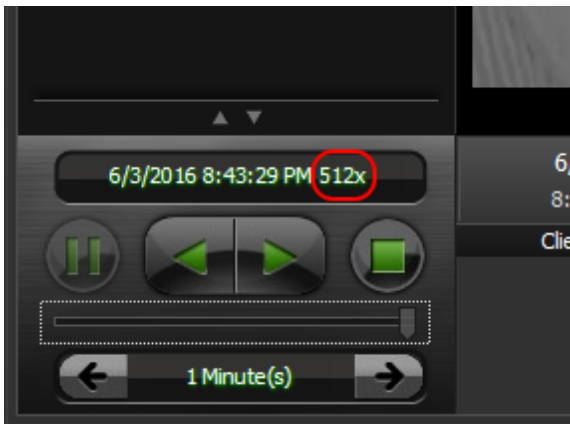


### 2.1.52 Media exporting with camera description

Upon exporting videos in native format, now the camera description will also be included (not only its name).

### 2.1.53 Improved accelerated playback

The accelerated media playback was greatly improved to allow a higher refresh rate of images. Previously the system would only show 2 frames per second in an accelerated playback. The playback experience should be much better for the user now.



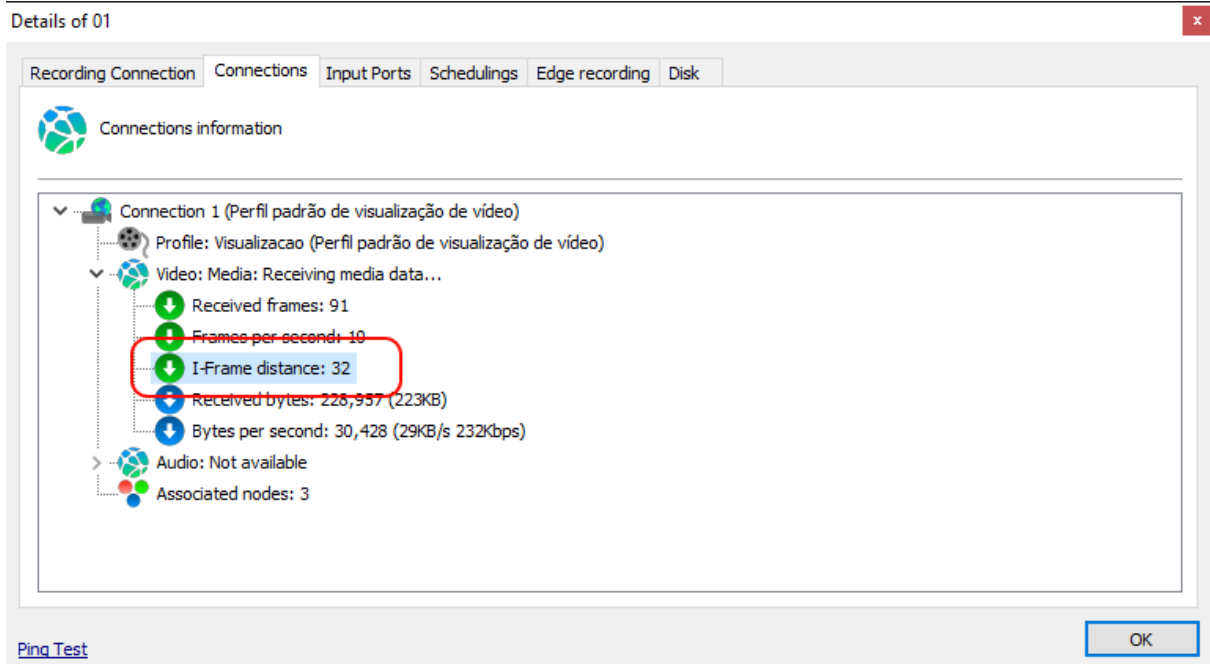
### 2.1.54 Recording error rearm time

To prevent the system to trigger multiple recording error events (In case of recording errors), the system was configured to trigger only 1 alert event per hour in case the error persists.

### 2.1.55 I-Frame distance information

The system will now inform the distance of I-Frames in H.264 and MPEG-4 videos. This information is extremely relevant because it directly affects the behavior of the cameras, as for example the delay time for an image to start displaying in the Surveillance Client.

This information will be available in Administration Client, under stream status:



It will also be available in Surveillance Client, on all camera images:

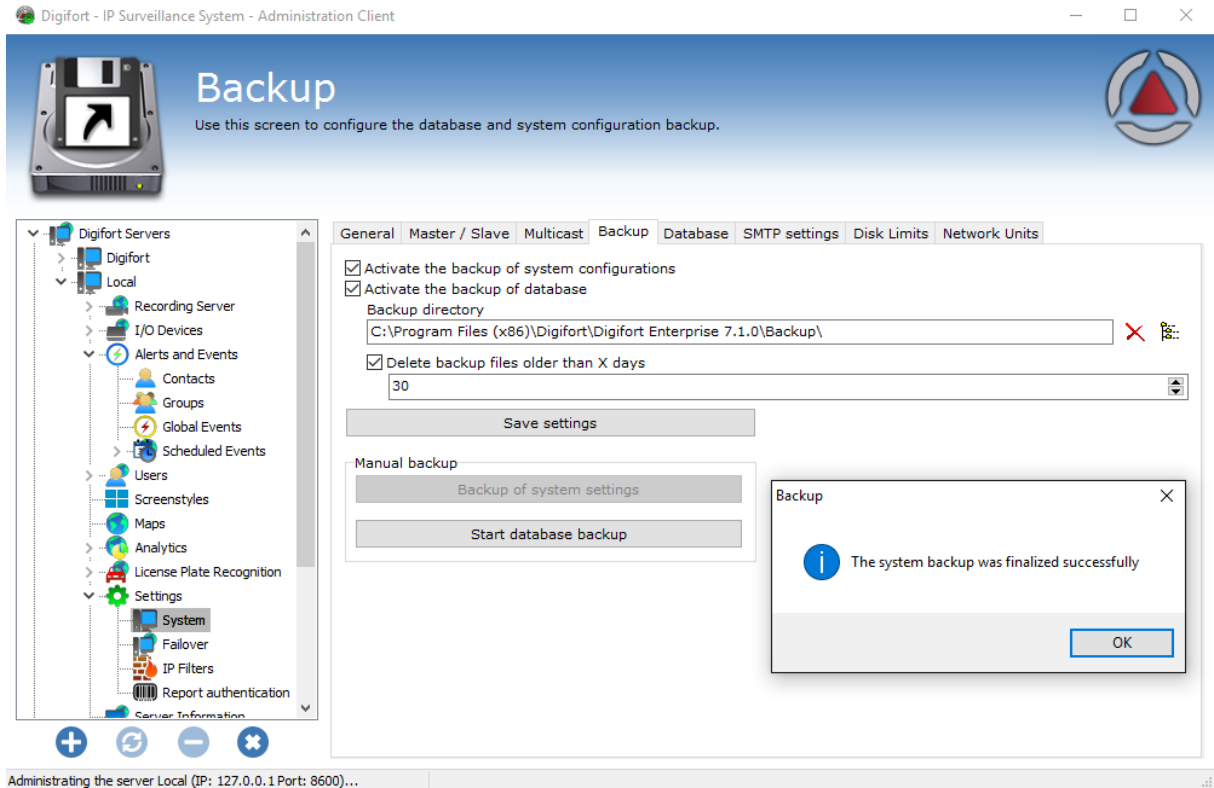


### 2.1.56 Master / Slave Admin password

In the Master / Slave architecture, the password of admin user must be configured in all slave servers so they can properly connect to master server. Now upon modification of admin password in master server, it will be automatically changed in the settings of all slave servers, so no communication error will happen.

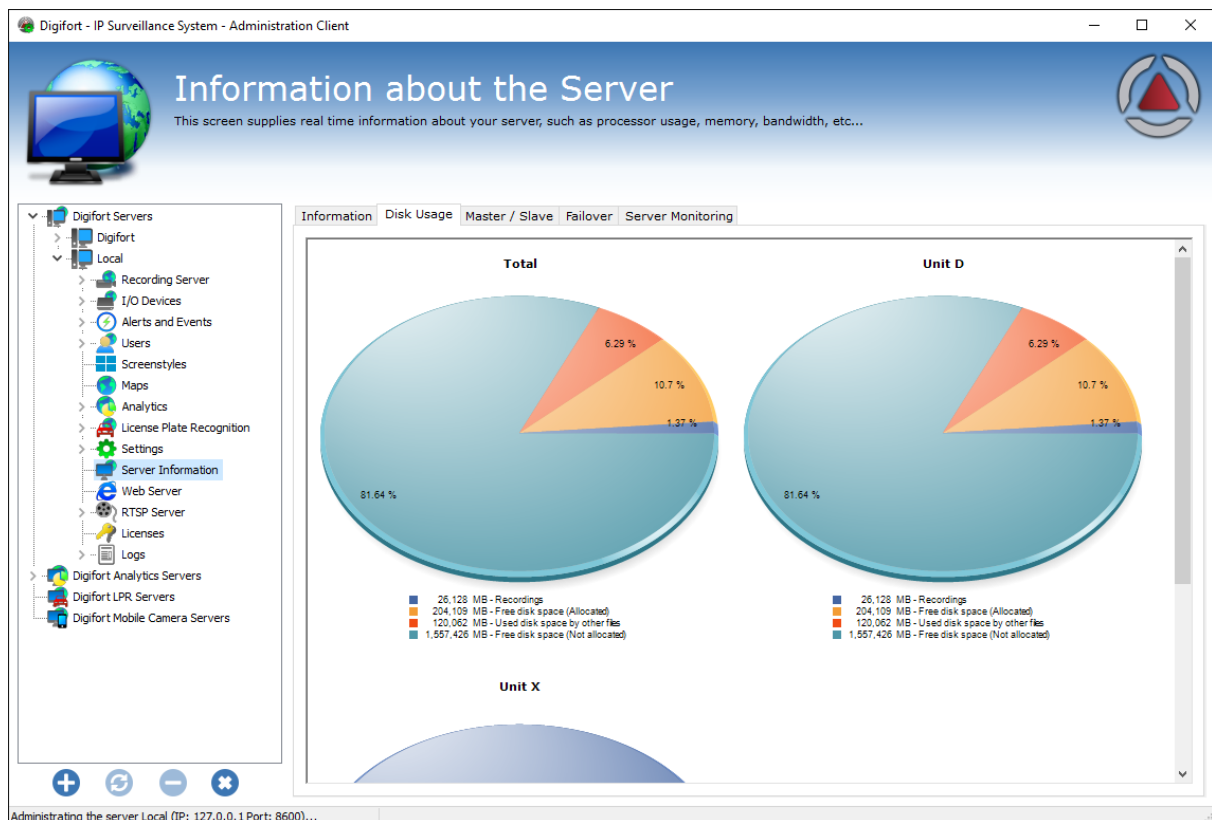
## 2.1.57 Backup finished message

The system will now show a message when the backup of system settings is finalized. Previously a message was displayed at the beginning of the process.



## 2.1.58 Organized disk charts

The disk usage charges are now sorted alphabetically.



### 2.1.59 Better management of media profiles

The Administration Client now allows for a better management to add, modify or delete media profiles from multiple selected cameras simultaneously.

Previously it was only possible to modify or delete media profiles that were common to all selected cameras. Example: Camera 01 had profiles "Recording" and "Visualization" and Camera 02 has profiles "Recording" and "Internet", in this case, only the media profile "Recording" could be changed simultaneously for both cameras.

With the new improvements, any profile can be changes, new profiles can be added, and any profile can be deleted.



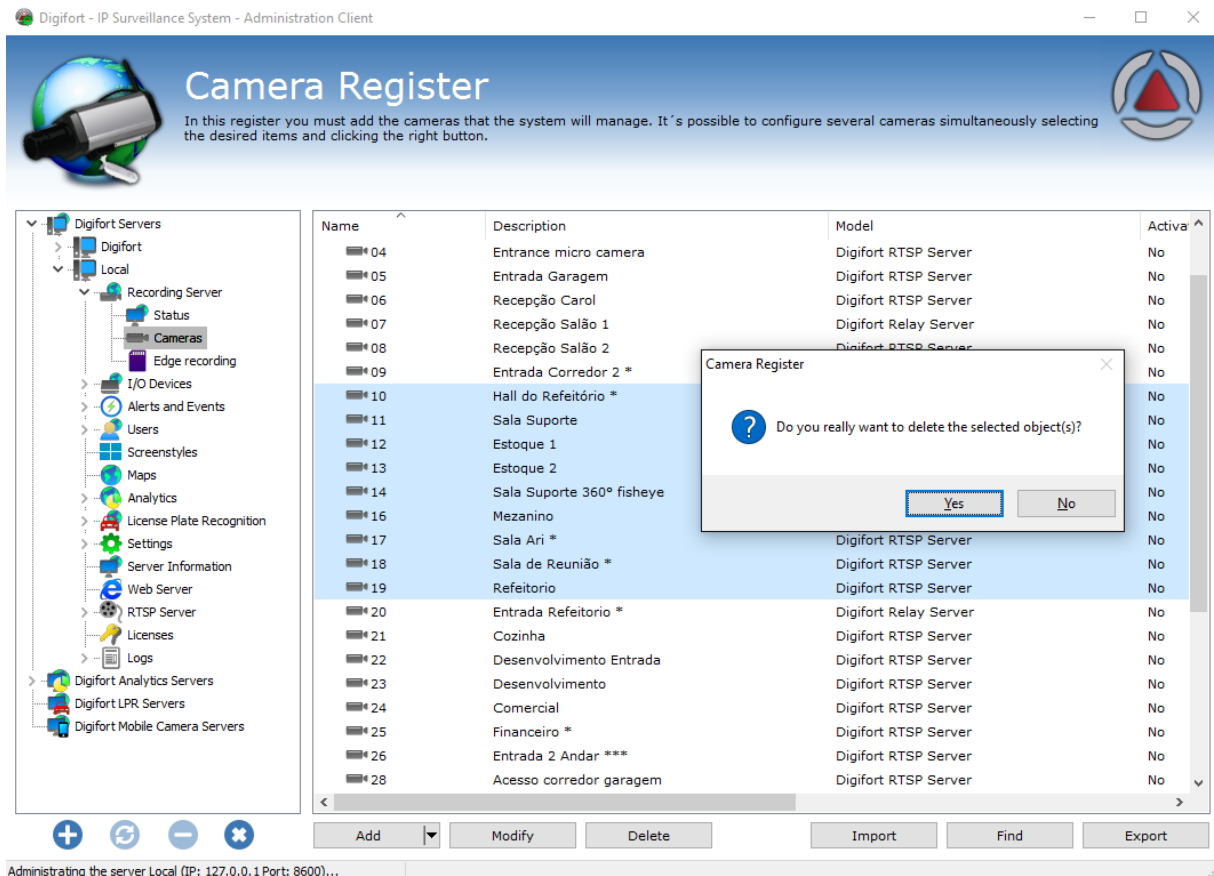
Entrada Corredor 2 *	Digifort RTSP Server	No	/
Activate camera	Digifort RTSP Server	No	/
Deactivate camera	Digifort RTSP Server	No	/
Recording schedule	Digifort RTSP Server	No	/
Events schedule	Digifort RTSP Server	No	/
Alarm buffer	Digifort RTSP Server	No	/
Snapshot buffer	Digifort RTSP Server	No	/
Events	Digifort RTSP Server	No	/
Disk limit	Digifort RTSP Server	No	/
Archiving	Digifort Relay Server	No	/
Recording type	Digifort RTSP Server	No	/
Edge recording	Digifort RTSP Server	No	/
Motion detection	Digifort RTSP Server	No	/
Privacy mode	Digifort RTSP Server	No	/
Relay	Digifort RTSP Server	No	/
Media profiles	Add profile	No	/
Recording media profile	Modify profile	No	/
Visualization media profile	Delete profile	No	/
Mobile visualization media profile	Preview	No	/
Motion detection media profile	Visualizacao	No	/
Grant rights	Visualización	No	/
Deny rights	View	No	/
Training Room 5 - model CAM 2	Digifort RTSP Server	No	/
Training Room 6 - model CAM 3	Digifort Relay Server	No	/
Training Room 7 - model CAM 4 *** LPR	Digifort RTSP Server	No	/
Training Room 8 - model CAM 5	Digifort RTSP Server	No	/

When a new profile is added, if it already exist in any selected camera, a warning message will be displayed and old profiles will be replaced by the new one.

When a profile is modified or deleted, only cameras containing those profiles will be modified, the rest of the selected cameras will remain unchanged.

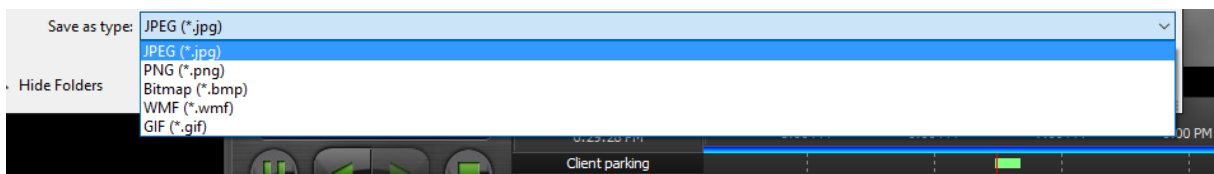
### 2.1.60 Possibility to delete multiple objects

The Administration Client now allows deleting multiple selected objects simultaneously from any list of objects in the system such as cameras, users, I/O devices, maps and others.



### 2.1.61 New snapshot formats

The Surveillance Client now supports additional formats to save snapshots: JPEG, PNG, Bitmap, WMF e GIF.



### 2.1.62 Ping test for I/O devices

The Administration Client now allows the execution of a ping test with I/O devices from registration and status screen.

I/O Device

General I/O Events Scheduling

I/O device general data

Name Description

Manufacturer  
Aviosys Aviosys International Inc.

Model IP Power 9211 Delux Firmware 2.05

Inputs 8 Outputs 0

Connection address Port User Password

80

Activate device

OK Cancel

Details of Comm5 Automacao 1

Device Input ports Scheduling

I/O device info

Device: Comm5 Automacao 1  
Description: Comm5 Automacao Demonstracao  
Model: Comm5 MA-5000  
IP: 10.1.22.155  
Active time: 0 Hour(s), 0 Minute(s) and 11 Second(s)  
Inactive time: 0 Hour(s), 0 Minute(s) and 11 Second(s)  
Status: Not working

Ping Test OK

### 2.1.63 Open field to type device model name

The Administration Client now provides an open field for "Manufacturer" and "Device model". This will ease the registration of new devices allowing the user to type only part of the model name which will

cause a look-up and system will auto-complete the field with the matching closest device name. Additionally the manufacturer name was removed as prefix from the "Model" field to allow the typing of model device.

Camera registration

Close all

General

General camera settings

Camera name: \_\_\_\_\_ Camera description: \_\_\_\_\_

Manufacturer: **Axis** (Axis Communications AB)

Camera model: **P1354** Firmware: 5.11 or greater

Camera address: \_\_\_\_\_ Port (80): 80 User: \_\_\_\_\_ Password: \_\_\_\_\_

Camera shortcut: \_\_\_\_\_ Latitude: 0.000000 Longitude: 0.000000

Recording directory: \_\_\_\_\_ Connection timeout (ms): 30000

Activate camera

OK Cancel

**Camera registration sidebar:**

- Camera
  - General
  - Lens
  - Motion detection
  - Audio
  - Image filters
  - Streaming
    - Media profiles
  - Recording
    - Live view
  - Recording
    - Settings
    - Edge recording
    - Metadata
    - Archiving
  - Rights
    - Users
  - PTZ
    - Settings
    - Presets
    - PTZ Patrol
    - Auxiliary
    - Joystick

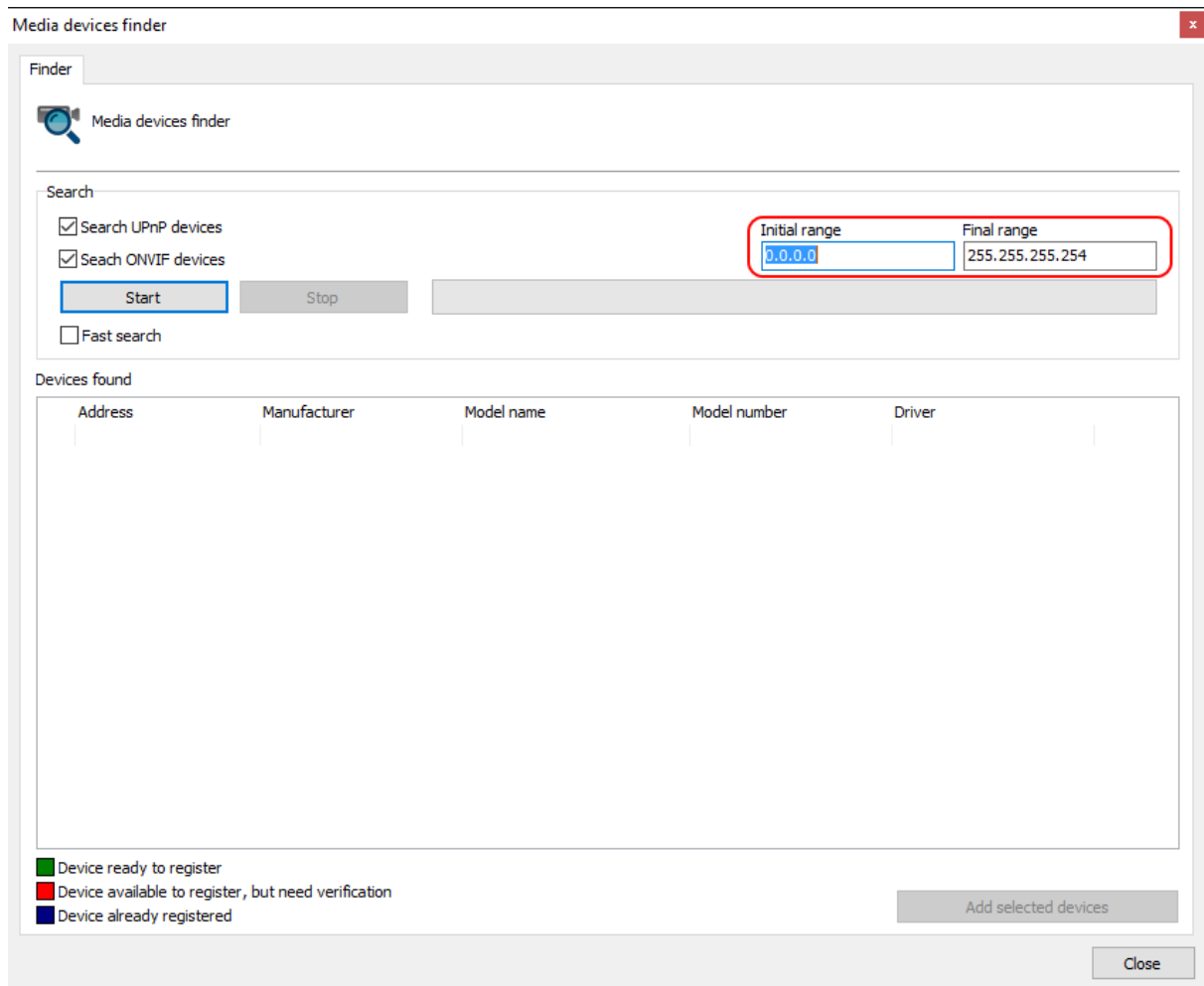
The screenshot shows the 'I/O Device' configuration window. The 'General' tab is selected. The 'Manufacturer' dropdown is set to 'Aviosys' and the 'Model' dropdown is set to 'IP Power 9211 Delux'. The 'Firmware' dropdown is set to '2.05'. The 'Inputs' field is set to '8' and the 'Outputs' field is set to '0'. The 'Port' field is set to '80'. The 'Activate device' checkbox is checked. The 'OK' button is highlighted with a blue border.

### 2.1.64 Edge recording download control

The system will now only start downloading edge recorded videos that are at least 10 minutes old. For example, if the server clock is 14:00 and a video from 13:30 to 14:00 should be downloaded from the camera, the system will only start its download at 14:10. This "delay" was introduced due to the fact that some cameras need extra time to "finalize" its current recordings.

### 2.1.65 Searching for devices with IP Range

The tool to search for network devices now allows the results to be filtered to a given range of IPs.



### 2.1.66 Better performance for objects list

The objects list in Surveillance Client was improved for better performance and behavior.

### 2.1.67 Configuration data in registry (64bit)

When the server is running in 64bit operating system, the system configuration data was stored inside a special compatibility key named Wow6432Node, now with the new 64bit version, the configuration data will be moved to the regular 64bit key in windows registry, both 32bits and 64bits version will access the same configuration data. This change also allows the system configuration backup to generate only 1 backup file, instead of generating a 32bit and 64bit versions of the backup as previously.

Warning: With this change, a system downgrade will not be possible because the settings will be moved to another registry key. Before updating to 7.2 backup your system settings using Administration Client, and in case a downgrade is required use the backup file to return the settings of the older version.

### 2.1.68 New audio codecs

The library for G.711 and G.726 was updated to provide better performance, compatibility and audio quality.

## 2.1.69 Improvements to database connection

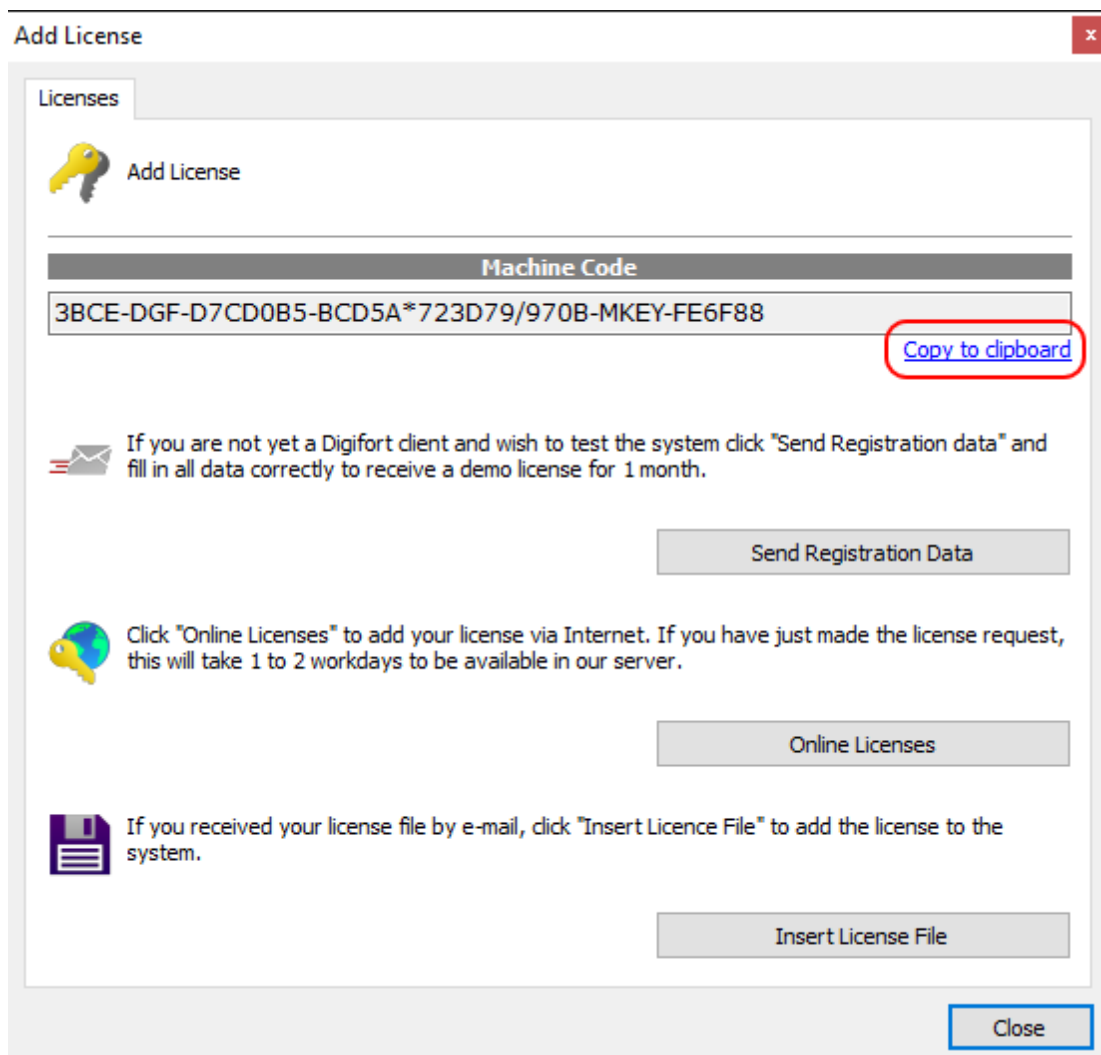
The connection with the system database was improved and should be more stable now. In case of any database communication error, the system will log an error and will send a message to Administration Client only. Surveillance Client will no longer receive any database error messages.

## 2.1.70 Playback with DGF-KB1000 keyboard improved

The playback controls with DGF-KB1000 were improved.

## 2.1.71 Copy machine code to the clipboard

A new option to copy the machine code to the clipboard was added to the licensing screen. Additionally the version and edition of the system is also copied.



## 2.1.72 Timeline zoom animation

The zoom operations on media player timeline will now display a transition animation to provide a more user-friendly interface.

### 2.1.73 Improvements to ONVIF driver

- Updated compatibility with protocol version 2.5
- Added support to continuous movement of PTZ cameras with implementation older than version 2.0
- Improved the stability and performance of the communication driver

### 2.1.74 Improvements to Axis PTZ driver

The PTZ driver of Axis video servers was improved to use a new method to transmit PTZ commands for analog cameras using plain TCP.

### 2.1.75 Digifort RTSP driver audio output

The communication driver "RTSP Digifort" that is used to create interconnection between Digifort servers now supports audio output.

### 2.1.76 Barco video wall integration improvements

Camera description will now be displayed as a decorator in Barco video wall and will also be displayed on side-bar.

Barco video wall integration now requires an integration license.

### 2.1.77 Quick Support

A new quick support tool was added to the release. This tool will allow the remote access from Digifort technicians to help customers with problems or optimizations in an easy, fast and secure way.

### 2.1.78 New features to Standard edition

The following pre-existent features in superior editions were added to Standard edition:

- Support to Edge Analytics (Executed in the camera)
- Support to Edge LPR (Executed in the camera)

## 2.2 New supported devices

### 2.2.1 Media Devices

3M P372  
3M P392  
3S Security N5014C  
3S Security N6030  
3S Security N6050  
3S Security N6092  
3S Security N9052  
Abus AbusTVIP92500  
Abus TVIP92100  
Abus TVIP92300  
Abus TVIP92600  
Abus TVIP92610  
Abus TVIP92700  
ACTi E23B  
ACTi GNR-3000  
ACTi I71  
ACTi I94



ADBrasil ADH 4120 AX  
ADS BLD-450  
ADS BLD-460  
AGNI MB-51P5  
AGNI MB-51P6  
AGNI MB-51P7  
AGNI MB-51PE  
AGNI MB-51PF  
AGNI MB-51PL  
AGNI MB-51PM  
AGNI MB-51PN  
AGNI MB-51Q6  
AGNI MB-51Q7  
AGNI MB-51QE  
AGNI MB-51QF  
AGNI MB-51QH  
AGNI MB-51QJ  
AGNI MB-51QL  
AGNI MB-51QM  
AGNI MB-51QN  
AGNI MB-51X1  
AGNI MB-51X5  
AGNI MB-51X6  
AGNI MB-51X7  
AGNI MB-51XF  
AGNI MB-51XJ  
AGNI MB-51XL  
AGNI MB-51XM  
AGNI MB-51XN  
AGNI MB-51Z5  
AGNI MB-51Z6  
AGNI MB-51Z7  
AGNI MB-51ZD  
AGNI MB-51ZF  
AGNI MB-51ZM  
AGNI MB-51ZN  
AGNI Q2V6-6  
AGNI Q2V6-N  
AGNI X0SB-6  
AGNI X0SG-5  
AGNI Z4SA-6  
AirLive BU-3028  
AirLive BU-3028-IVS  
AirLive FE-201DM  
AirLive FE-501DM  
AirLive FE-501OD  
Alive AL-DVR3004  
Alive AL-DVR3016S  
Alive AL-HVR-5104-M  
Alive AL-HVR-5208-N  
Alive AL-HVR-5216-N  
Antrica ANT-35000  
Arecont AV3195DN

ARH SmartCam  
AvGlobal IPAV282BA6-F36I36BR  
AvGlobal IPAV313BA6-F36I36W  
AvGlobal IPAV4BF75-V28I42WE  
AvGlobal NVR-GV32FHD  
Axis A8105-E  
Axis C1004  
Axis C2005  
Axis C3003-E  
Axis M1145-LW  
Axis M1165-LW  
Axis M3044-WV  
Axis M3045-WV  
Axis M3046-V  
Axis M3104-L  
Axis M3104-LVE  
Axis M3105-L  
Axis M3105-LVE  
Axis M3106-L  
Axis M3106-LVE  
Axis P12-MkII  
Axis P1365 MkII  
Axis P1435-LE  
Axis P3225-LV MkII  
Axis P3707-PE  
Axis P5624-E MkII  
Axis P5635E MkII  
Axis P8221  
Axis Q1615 Mk II  
Axis Q1615-E Mk II  
Axis Q1775  
Axis Q3505-VE MKII  
Axis Q3615-VE  
Axis Q3617-VE  
Axis Q3708-PVE  
Axis Q6052  
Axis Q6052-E  
Axis Q6054  
Axis Q6054-E  
Axis Q6055  
Axis Q6055-E  
Axis Q6128-E  
Axis XF40-Q1765  
Axis XP40-Q1765  
Bosch AutoDome IP 5000 IR  
Bosch AutoDome IP StarLight 7000 HD  
Bosch Dinion Bullet 4000 HD  
Bosch Dinion NBN-832V-IP  
Bosch FlexiDome IP5000  
Bosch FlexiDome IP7000VR  
Bosch MIC 612  
Bosch MIC IP Dynamic 7000 HD  
Bosch NDN-40012-V3

Bosch NDN-50051-A3  
Bosch NEZ-4112-PPCW4  
Bosch NEZ-4212-PPCW4  
Bosch NEZ-5230-PPCW4  
Bosch NIN-50022-V3  
Bosch NPC-20012-F2L  
Bosch VOT 320V  
Brickcom FB-200Ne  
Brickcom FB-200Np  
Brickcom FB-300Ne Star  
Brickcom FB-300Np Star  
Brickcom FB-H200Np  
Brickcom FD-200Np V6  
Brickcom FD-201Nf V6  
Brickcom FD-202Ne V6  
Brickcom FD-300Np Star  
Brickcom FD-301Nf Star  
Brickcom FD-302Ne Star  
Brickcom GOB-300Np Star  
Brickcom GOB-300Np Star-Lte  
Brickcom MD-200Np V6  
Brickcom MD-300Np Star  
Brickcom MD-300Np-360 Star  
Brickcom MD-H600Np-360-DN  
Brickcom OB-200Nf V6  
Brickcom OB-200Np-LR  
Brickcom OB-202Ne V6  
Brickcom OB-300Nf Star  
Brickcom OB-300Np Star  
Brickcom OB-302Ne Star  
Brickcom OB-500Ap V6  
Brickcom OB-E200Nf  
Brickcom OB-H200Np  
Brickcom OSD-200NP 30X  
Brickcom VD-200Np V6  
Brickcom VD-201Nf V6  
Brickcom VD-202Ne V6  
Brickcom VD-300Np Star  
Brickcom VD-301Nf Star  
Brickcom VD-302Ne Star  
Brickcom VD-E200Nf  
Brickcom VD-H200Np  
Brickcom WMB-300Ap V6  
Brickcom WMB-300ApAC  
Brickcom WOB-300Np Star  
Bycon BCBN S0361060IR-6M  
Bycon BFYN-S01620IR-6M  
Bycon BSA-H1616  
Bycon BSA-H1616PR  
Bycon BSA-H1632PR  
Bycon BSDN-G22HD100IR  
Bycon STD-H0404NVR  
Bycon STD-H1600TVi

Canon VB-H630D  
Canon VB-H730F  
Canon VB-M40  
Canon VB-M620D  
Canon VB-M640VE  
Canon VB-M720F  
Canon VB-M741LE  
Canon VB-R11  
Canon VB-S31  
Centrium ADSR20H130C  
Centrium APM4E10H200C  
Centrium APM7B22H200C  
Centrium AVHN20H130C  
Centrium AVZM40E200C  
Cisco CIVS IPC-2830  
Cisco CIVS IPC-2835  
Cisco CIVS IPC-6930  
Citrox CX-NVR02  
Clear CL1348  
Clebo FD20  
Clebo IPE 1100M  
CNB MPC1070PN  
CNB NB25-7MH  
CNB NB25-7MHR  
CNB NP24-8P30RW  
CNB NS21-0MH  
ControlBR CBR-ST04H  
ControlBR CBR-ST08H  
ControlBR CBR-ST16H  
CS Eletronica DVR2108HWI-H  
CS Eletronica DVR2116HVI  
Cynix HIR-XN30WL  
Dahua DHI-HCVR4104C-S2  
Dahua DHI-HCVR4104HE-S2  
Dahua DHI-HCVR4104HS-S2  
Dahua DHI-HCVR4108C-S2  
Dahua DHI-HCVR4108HE-S2  
Dahua DHI-HCVR4108HS-S2  
Dahua DHI-HCVR4116HE-S2  
Dahua DHI-HCVR4116HS-S2  
Dahua DHI-HCVR4204A-S2  
Dahua DHI-HCVR4208A-S2  
Dahua DHI-HCVR4216AN-S2  
Dahua DHI-HCVR4216A-S2  
Dahua DHI-HCVR4404L-S2  
Dahua DHI-HCVR4408L-S2  
Dahua DHI-HCVR4416L-S2  
Dahua DHI-HCVR4804S-S2  
Dahua DHI-HCVR4808S-S2  
Dahua DHI-HCVR4816S-S2  
Dahua DHI-HCVR5104C-S2  
Dahua DHI-HCVR5104HE-S2  
Dahua DHI-HCVR5104H-S2

Dahua DHI-HCVR5108C-S2  
Dahua DHI-HCVR5108HE-S2  
Dahua DHI-HCVR5108H-S2  
Dahua DHI-HCVR5116HE-S2  
Dahua DHI-HCVR5116H-S2  
Dahua DHI-HCVR5204A-S2  
Dahua DHI-HCVR5208A-S2  
Dahua DHI-HCVR5216AN-S2  
Dahua DHI-HCVR5216A-S2  
Dahua DHI-HCVR7104C-S2  
Dahua DHI-HCVR7104HE-S2  
Dahua DHI-HCVR7104H-S2  
Dahua DHI-HCVR7108HE-S2  
Dahua DHI-HCVR7108H-S2  
Dahua DHI-HCVR7204A-S2  
Dahua DHI-HCVR7208A-S2  
Dahua DH-IPC-C10  
Dahua DH-IPC-HDW4421E  
Dahua DH-IPC-KW12  
Dahua DH-NVR608-32-4K  
Dahua DH-SC65F23  
Dahua DH-SD22204T-GN  
Dahua DH-SD29204S-GN  
Dahua DH-SD29204S-GN-W  
Dahua DH-SD40212T-HN  
Dahua DH-SD42212T-HN  
Dahua DH-SD42C212T-HN  
Dahua DH-SD50120T-HN  
Dahua DH-SD50220T-HN  
Dahua DH-SD50230T-HN  
Dahua DH-SD50430U-HN  
Dahua DH-SD52C120T-HN  
Dahua DH-SD52C220T-HN  
Dahua DH-SD52C230T-HN  
Dahua DH-SD52C430U-HN  
Dahua DH-SD59120T-HN  
Dahua DH-SD59220T-HN  
Dahua DH-SD59230T-HN  
Dahua DH-SD59430U-HN  
Dahua DH-SD6A230-HNI  
Dahua DH-SD6AE230F-HNI  
Dahua DH-SD6AE530U-HN  
Dahua DH-SD6AL230F-HNI  
Dahua DH-SD6AL230FN-HNI-IR  
Dahua DH-SD6AL240-HNI  
Dahua DH-SD6C120T-HN  
Dahua DH-SD6C220T-HN  
Dahua DH-SD6C230S-HN  
Dahua DH-SD6C230T-HN  
Dahua DH-SD6C430U-HN  
Dahua HCVR5116H-S2  
Dahua HCVR5216AN-S2  
Dahua HCVR5424L-S2

Dahua HCVR5432L-S2  
Dahua HCVR5824S-S2  
Dahua HCVR5832S-S2  
Dahua HCVR7404L  
Dahua HCVR7408L  
Dahua HCVR7416L  
Dahua HCVR7804S  
Dahua HCVR7808S  
Dahua HCVR7816S  
Dahua IPC-EB5400  
Dahua IPC-EB5500  
Dahua IPC-EBW81200  
Dahua IPC-HDB4231C-AS  
Dahua IPC-HDB4431C-AS  
Dahua IPC-HDBW1320E  
Dahua IPC-HDBW2300R-Z  
Dahua IPC-HDBW2320RN-ZS  
Dahua IPC-HDBW4231E-AS  
Dahua IPC-HDBW4231F-AS  
Dahua IPC-HDBW4421EP-AS  
Dahua IPC-HDBW4431E-AS  
Dahua IPC-HDBW4431F-AS  
Dahua IPC-HDBW4830E-AS  
Dahua IPC-HDBW5231E-Z  
Dahua IPC-HDBW5231R-Z  
Dahua IPC-HDBW5421E-Z  
Dahua IPC-HDBW5431E-Z  
Dahua IPC-HDBW5431R-Z  
Dahua IPC-HDBW5830E-Z  
Dahua IPC-HDBW5830R-Z  
Dahua IPC-HDW1320SN  
Dahua IPC-HDW4231EM-AS  
Dahua IPC-HDW4231M  
Dahua IPC-HDW4431EM-AS  
Dahua IPC-HDW4431M  
Dahua IPC-HDW4830EM-AS  
Dahua IPC-HDW5231R-Z  
Dahua IPC-HDW5431R-Z  
Dahua IPC-HDW5830R-Z  
Dahua IPC-HF5231E  
Dahua IPC-HF5431E  
Dahua IPC-HFW1320S  
Dahua IPC-HFW2300R-Z  
Dahua IPC-HFW4231B-AS  
Dahua IPC-HFW4231D-AS  
Dahua IPC-HFW4231E-S  
Dahua IPC-HFW4231S  
Dahua IPC-HFW4431B-AS  
Dahua IPC-HFW4431D-AS  
Dahua IPC-HFW4431E-S  
Dahua IPC-HFW4431S  
Dahua IPC-HFW4830E-S  
Dahua IPC-HFW5231E-Z

Dahua IPC-HFW5421EN-Z  
Dahua IPC-HFW5431E-Z  
Dahua IPC-HFW5830E-Z  
Dahua IPC-HFW8331E-Z  
Dahua SD-29204SN-GN  
Dahua SD50430U-HN  
Dahua SD52C430U-HN  
Dahua SD59430U-HN  
Dahua SD-65230-HNI  
Dahua SD6AE530U-HN  
Dahua SD6C430U-HN  
DivioTec NBF232P  
DivioTec NBF233U  
DivioTec NBF331  
DivioTec NBR123  
DivioTec NBR124  
DivioTec NBR222PV  
DivioTec NBR224P  
DivioTec NBR225P  
DivioTec NBR226PV  
DivioTec NBR321  
DivioTec NBR325P  
DivioTec NBR326P  
DivioTec NDF341  
DivioTec NDF342  
DivioTec NDF343P  
DivioTec NDM361  
DivioTec NDR153  
DivioTec NDR154  
DivioTec NDR252P  
DivioTec NDR255P  
DivioTec NDR351  
DivioTec NDR352P  
DivioTec TBR720  
DivioTec TBR721  
DivioTec TBR722  
DivioTec TDR751  
DSS DFH-3016E  
DSS DFH-6008E  
DSS DS-099  
Dynacolor D5BEE-16  
Dynacolor P2SA-6  
Dynacolor P2SA-E  
Dynacolor P2SA-F  
Dynacolor P2SA-M  
Dynacolor P2SA-N  
Dynacolor P2SD-6  
Dynacolor P2SD-E  
Dynacolor P2SD-F  
Dynacolor P2SD-L  
Dynacolor P2SD-M  
Dynacolor P2SD-N  
Dynacolor P2V6-6

Dynacolor P2V6-E  
Dynacolor P2V6-F  
Dynacolor P2V6-L  
Dynacolor P2V6-M  
Dynacolor P2V6-N  
Dynacolor Q2SH-6  
Dynacolor Q2SH-E  
Dynacolor Q2SH-F  
Dynacolor Q2SH-J  
Dynacolor Q2SH-L  
Dynacolor Q2SH-M  
Dynacolor Q2SH-N  
Dynacolor Q2V6-6  
Dynacolor Q2V6-E  
Dynacolor Q2V6-F  
Dynacolor Q2V6-J  
Dynacolor Q2V6-L  
Dynacolor Q2V6-M  
Dynacolor Q2V6-N  
Dynacolor X0SB-5  
Dynacolor X0SB-6  
Dynacolor X0SB-F  
Dynacolor X0SB-J  
Dynacolor X0SB-L  
Dynacolor X0SB-M  
Dynacolor X0SB-N  
Dynacolor X0SG-5  
Dynacolor X0SG-6  
Dynacolor X0SG-F  
Dynacolor X0SG-J  
Dynacolor X0SG-L  
Dynacolor X0SG-M  
Dynacolor X0SG-N  
Dynacolor Z4SA-5  
Dynacolor Z4SA-6  
Dynacolor Z4SA-D  
Dynacolor Z4SA-F  
Dynacolor Z4SA-M  
Dynacolor Z4SF-5  
Dynacolor Z4SF-6  
Dynacolor Z4SF-D  
Dynacolor Z4SF-F  
Dynacolor Z4SF-M  
Elbex EIF3502HD  
Elgin AHD-L 960H  
FerTec FTD-3416TF-C  
Flir DNR208P1  
GEOip GV-32CH  
Gerp IP NBVELM2M-2.8A12  
Gerp IP NBVELM4M-2.8A12  
Gerp IP NDVLM2MCM-2.8A12  
Gerp IP NMBE2M-3.6  
Gerp IP NMDE2M-2.8



Gerp IP NMDX2M-2.8  
Giga GS16960MAX  
Giga GS16HD  
Golbong 2211  
Golbong 2211-54  
Golbong 2220  
Golbong 2221  
Golbong 2251  
Golbong 2251-12  
Golbong 2255  
Golbong 2260-23  
Golbong 2260-30  
Golbong 2260-45  
Golbong 2260-73  
Golbong 2291  
Golbong 2296  
Golbong 2369-23  
Golbong 2369-30  
Golbong 2369-45  
Golbong 2369-73  
Golbong 2371  
Golbong 2371-12  
Golbong 2375  
Golbong 2545  
Golbong 2545-15  
Golbong 2545-30  
Golbong 2545-32  
Golbong 2546  
Golbong 2546-32  
Golbong 2643-48  
Golbong 2645-48  
Golbong 2646-48  
Golbong 2650-48  
Golbong 2652-48  
Golbong 2654-48  
Golbong 2654-55  
Golbong 2676-21  
Golbong 2676-23  
Golbong 2676-64  
Golbong 2679-21  
Golbong 2679-23  
Golbong 2679-30  
Golbong 2679-64  
Golbong 2816-18  
Golbong 2816-30  
Golbong 2818-18  
Golbong 2818-30  
Golbong 3025-45  
Golbong 3025-68  
Golbong 3025-83  
Golbong 3030-47  
Golbong 3031  
Golbong 3044

Golbong 3045-36  
Golbong 3045-75  
Golbong 3550-28  
Golbong 3554  
Golbong 3555  
Golbong 3556-30  
Golbong 3556-53  
Golbong 3566  
Golbong 3572  
Golbong GB-HD9624  
Grandstream GXV3611IR HD  
Grandstream GXV3674FHD-VF  
Gravo GIB-2AF/20  
Gravo GIB-2AVF/60  
Gravo GID-2AVF/20  
Gravo GIS-2M22X120  
Greatek GHVR-332NS  
Greatek GHVR-504NS  
Greatek GHVR-508NS  
Greatek GHVR-516NS  
Greatek GTK-DVR-04H  
Greatek GTK-DVR-08H  
Greatek GTK-HVR-04N  
Greatek GTK-HVR-08N  
Greatek GTK-HVR-16N  
Greatek SEGI-2033  
Hikvision DS-2CD2042WD-I  
Hikvision DS-2CD2042WD-I(W)(S)  
Hikvision DS-2CD2142FWD-I  
Hikvision DS-2CD2622FWD-I(Z)(S)  
Hikvision DS-2CD2942F-IWS  
Hikvision DS-2CD4025FWD-AP  
Hikvision DS-2CD4026FWD-AP  
Hikvision DS-2CD4085F-P  
Hikvision DS-2CD40C5F-AP  
Hikvision DS-2CD4165F-IZ  
Hikvision DS-2CD4185F-IZ  
Hikvision DS-2CD4565F-IZH  
Hikvision DS-2CD4585F-IZH  
Hikvision DS-2CD4665F-IZHS  
Hikvision DS-2CD4685F-IZHS  
Hikvision DS-2CD4A25FWD  
Hikvision DS-2CD4A25FWD-IZ  
Hikvision DS-2CD4A26FWD  
Hikvision DS-2CD4A26FWD-IZ  
Hikvision DS-2CD4A85F-IZHS  
Hikvision DS-2CD6332FWD-IVS  
Hikvision DS-2CD63C2F-IWS  
Hikvision DS-2CD6986F-H  
Hikvision DS-2DE4220W-D  
Hikvision DS-2DE5220W-AE  
Hikvision DS-2DE5230W-AE  
Hikvision DS-2DF6223-AEL

Hikvision DS-2DF6236-AEL  
Hikvision DS-2DP0818Z-D  
Hikvision DS-2DP1636Z-D  
Hikvision DS-2DY9187-AI8  
Hikvision DS-6708HWI  
Hikvision DS-6716HWI  
Hikvision DS-7204HI-SL  
Hikvision DS-7208HGHI-SH  
Hikvision DS-7216HGHI-F1  
Hikvision DS-7216HVI-SH  
Hikvision DS-7224HVI-ST  
Hikvision DS-7332H6H1-SH  
Hikvision DS-M5504HM-GW  
Hikvision Generic Model  
Hikvision VMI-DVR-3216-SV  
Honeywell HIDC-1600TV  
Illustra ADCi210-D011  
Illustra ADCi210-D013  
Illustra ADCi210-D021  
Illustra ADCi210-D023  
Illustra ADCi210-D111  
Illustra ADCi210-D113  
Illustra ADCi210-D121  
Illustra ADCi210-D123  
Illustra IES01B1BNWIY  
Illustra IES01CFACWSY  
Illustra IES01CFBCWIY  
Illustra IES01D1OCWIY  
Illustra IES01MFBNWIY  
Illustra IES02B1BNWIY  
Illustra IES02CFACWSY  
Illustra IES02CFBCWIY  
Illustra IES02D1OCWIY  
Illustra IES02MFBNWIY  
Illustra IPL02B2BNWIY  
Illustra IPS03D2ICBIT  
Illustra IPS03D2ICBTT  
Illustra IPS03D2ICWIT  
Illustra IPS03D2ICWTT  
Illustra IPS03D2ISBIT  
Illustra IPS03D2ISBTT  
Illustra IPS03D2ISWIT  
Illustra IPS03D2ISWTT  
Illustra IPS03D2OCBIT  
Illustra IPS03D2OCBTT  
Illustra IPS03D2OCWIT  
Illustra IPS03D2OCWTT  
Illustra IPS03D2OSBIT  
Illustra IPS03D2OSBTT  
Illustra IPS03D2OSWIT  
Illustra IPS03D2OSWTT  
Illustra IPS03D3ICBIT  
Illustra IPS03D3ICBTT

Illustra IPS03D3ICWIT  
Illustra IPS03D3ICWTT  
Illustra IPS03D3ISBIT  
Illustra IPS03D3ISBTT  
Illustra IPS03D3ISWIT  
Illustra IPS03D3ISWTT  
Illustra IPS05D2ICBIY  
Illustra IPS05D2ICBTY  
Illustra IPS05D2ICWIY  
Illustra IPS05D2ICWTY  
Illustra IPS05D2ISBIY  
Illustra IPS05D2ISBTY  
Illustra IPS05D2ISWIY  
Illustra IPS05D2ISWTY  
Illustra IPS05D2OCBIY  
Illustra IPS05D2OCBTY  
Illustra IPS05D2OCWIY  
Illustra IPS05D2OCWTY  
Illustra IPS05D2OSBIY  
Illustra IPS05D2OSBTY  
Illustra IPS05D2OSWIY  
Illustra IPS05D2OSWTY  
Illustra IPS05D3ICBIY  
Illustra IPS05D3ICBTY  
Illustra IPS05D3ICWIY  
Illustra IPS05D3ICWTY  
Illustra IPS05D3ISBIY  
Illustra IPS05D3ISBTY  
Illustra IPS05D3ISWIY  
Illustra IPS05D3ISWTY  
Intelbras CVD-1004  
Intelbras HDCV11004-G2  
Intelbras HDCV11008-G2  
Intelbras HDCV11016-G2  
Intelbras HDCV11032  
Intelbras HDCV13016  
Intelbras HDCV15032-H  
Intelbras NVD3000  
Intelbras NVD3000-P  
Intelbras NVD-7032  
Intelbras VIP 1120  
Intelbras VIP 5220 SD  
Intelbras VIP 5230  
Intelbras VIP 5450Z  
Intelbras VIP E3250-Z  
Intelbras VIP E5230  
Intelbras VIP E5230-Z  
Intelbras VIP E6400  
Intelbras VIP S3020G2  
Intelbras VIP S3330G2  
Intelbras VIP S-4020-G2  
Intelbras VIP S-4320-G2  
JFL Alarmes SAD 16

JFL Alarmes WD3008  
JFL Alarmes WD4004  
JFL Alarmes WD4008  
JFL Alarmes WD4016  
JFL Alarmes WD4032  
JFL Alarmes WD4116  
LevelOne FCS-0051  
LevelOne FCS-3083  
LevelOne FCS-3092  
LevelOne FCS-3093  
LevelOne FCS-4042  
LevelOne FCS-4043  
LevelOne FCS-4102  
LevelOne WCS-6050  
LG LNU3210R  
Linkbee LB-2316ME  
LTV DVR-1662-HV  
LuxVision ADVR-7008TR-LM  
LuxVision ADVR-7016TR-LM  
LuxVision LV-DVR-04N  
LuxVision LV-DVR-04P  
LuxVision LV-DVR-08P  
LuxVision LV-DVR-16D  
LuxVision LVDVR16i-AHDM  
LuxVision LV-DVR-16N  
LuxVision LV-DVR-16P  
LuxVision LVDVR216-AHDM  
LuxVision LV-IPC39B36  
Merit Lilin IPD62220ES  
Merit Lilin IPR2122ES  
Merit Lilin IPR320ESX  
Merit Lilin IPR722E  
Merit Lilin IPR7922E4/6  
Merit Lilin IPS420  
Merit Lilin LR6122  
Merit Lilin MR8322  
Merit Lilin SD2222E  
Merit Lilin SR7022  
Merit Lilin ZG1232  
Messoa NCR376  
Messoa NOD316  
Messoa SPD983  
Messoa UFD706  
Milesight MS-C2151-PA  
Milesight MS-C2163-FIPNA  
Milesight MS-C2163-PNA  
Milesight MS-C2173-PNA  
Milesight MS-C2181-PA  
Milesight MS-C2182-PA  
Milesight MS-C2191-PWA  
Milesight MS-C2951-PB  
Milesight MS-C2962-PB  
Milesight MS-C2963-FIPB

Milesight MS-C2963-PB  
Milesight MS-C2972-FIPB  
Milesight MS-C2972-FIPMB  
Milesight MS-C2973-PB  
Milesight MS-C2982-PB  
Milesight MS-C3581-PA  
Milesight MS-C3586-PA  
Milesight MS-C3596-PWA  
Milesight MS-C3751-PB  
Milesight MS-C3762-FIPB  
Milesight MS-C3763-FIPB  
Milesight MS-C3763-PB  
Milesight MS-C3772-FIPB  
Milesight MS-C3772-FIPMB  
Milesight MS-C4191  
Milesight MS-C4192  
Milesight MS-C4451-PB  
Milesight MS-C4462-FIPB  
Milesight MS-C4463-FIPB  
Milesight MS-C4463-PB  
Milesight MS-C4472-FIPB  
Milesight MS-C4472-FIPMB  
Milesight MS-C4473-PB  
Milesight MS-C4482-PB  
Mobotix C25  
Mobotix Q25  
MTW VM0415  
MTW VM0515  
Oncam EVO-05-LCD  
Oncam EVO-05-LID  
Oncam EVO-05-LJD  
Oncam EVO-05-LMD  
Oncam EVO-05-LND  
Oncam EVO-05-NJD  
Oncam EVO-05-NMD  
Oncam EVO-05-NND  
Oncam EVO-12-LCD  
Oncam EVO-12-LID  
Oncam EVO-12-LJD  
Oncam EVO-12-LMD  
Oncam EVO-12-LND  
Oncam EVO-12-NCD  
Oncam EVO-12-NID  
Oncam EVO-12-NJD  
Oncam EVO-12-NMD  
Oncam EVO-12-NND  
Opgal Sii AT V2  
Panasonic WV-SW397  
Pelco Esprit Full HD ES5230-02N  
Pelco Esprit Full HD ES5230-02W  
Pelco Esprit Full HD ES5230-05N  
Pelco Esprit Full HD ES5230-05W  
Pelco Esprit Full HD ES5230-12N

Pelco Esprit Full HD ES5230-12NP  
Pelco Esprit Full HD ES523-012W  
Pelco Esprit Full HD ES523-012WP  
Pelco Esprit Full HD ES523-015N  
Pelco Esprit Full HD ES523-015NP  
Pelco Esprit Full HD ES523-015W  
Pelco Esprit Full HD ES523-015WP  
Pelco EVO-05-LCD  
Pelco EVO-05-LJD  
Pelco EVO-05-LMD  
Pelco EVO-05-LND  
Pelco EVO-05-NCD  
Pelco EVO-05-NJD  
Pelco EVO-05-NMD  
Pelco EVO-05-NND  
Pelco EVO-12-LCD  
Pelco EVO-12-LID  
Pelco EVO-12-LJD  
Pelco EVO-12-LMD  
Pelco EVO-12-LND  
Pelco EVO-12-NCD  
Pelco EVO-12-NID  
Pelco EVO-12-NJD  
Pelco EVO-12-NMD  
Pelco EVO-12-NND  
Pelco NET5501  
Pelco NET5504  
Pelco NET5508  
Pelco Optera IMM12018-E  
Pelco Sarix Pro 2 IBP121-1I  
Pelco Sarix Pro 2 IBP121-1R  
Pelco Sarix Pro 2 IBP122-1I  
Pelco Sarix Pro 2 IBP122-1R  
Pelco Sarix Pro 2 IBP124-1I  
Pelco Sarix Pro 2 IBP124-1R  
Pelco Sarix Pro 2 IBP221-1I  
Pelco Sarix Pro 2 IBP221-1R  
Pelco Sarix Pro 2 IBP222-1I  
Pelco Sarix Pro 2 IBP222-1R  
Pelco Sarix Pro 2 IBP224-1I  
Pelco Sarix Pro 2 IBP224-1R  
Pelco Sarix Pro 2 IBP321-1I  
Pelco Sarix Pro 2 IBP321-1R  
Pelco Sarix Pro 2 IBP322-1I  
Pelco Sarix Pro 2 IBP322-1R  
Pelco Sarix Pro 2 IBP324-1I  
Pelco Sarix Pro 2 IBP324-1R  
Pelco Sarix Pro 2 IBP521-1I  
Pelco Sarix Pro 2 IBP521-1R  
Pelco Sarix Pro 2 IJP121-1IS  
Pelco Sarix Pro 2 IJP221-1IS  
Pelco Sarix Pro 2 IMP121-1ES  
Pelco Sarix Pro 2 IMP121-1IS

Pelco Sarix Pro 2 IMP121-1RS  
Pelco Sarix Pro 2 IMP221-1ES  
Pelco Sarix Pro 2 IMP221-1IS  
Pelco Sarix Pro 2 IMP221-1RS  
Pelco Sarix Pro 2 IMP321-1ES  
Pelco Sarix Pro 2 IMP321-1IS  
Pelco Sarix Pro 2 IMP321-1RS  
Pelco Sarix Pro 2 IMP521-1ES  
Pelco Sarix Pro 2 IMP521-1IS  
Pelco Sarix Pro 2 IMP521-1RS  
Pelco Sarix Pro 2 IWP121-1ES  
Pelco Sarix Pro 2 IWP221-1ES  
Pelco Spectra Enhanced S6220-EG0  
Pelco Spectra Enhanced S6220-EG1  
Pelco Spectra Enhanced S6220-ESG0  
Pelco Spectra Enhanced S6220-ESG1  
Pelco Spectra Enhanced S6220-FW0  
Pelco Spectra Enhanced S6220-FW1  
Pelco Spectra Enhanced S6220-PB0  
Pelco Spectra Enhanced S6220-PB1  
Pelco Spectra Enhanced S6220-PG0  
Pelco Spectra Enhanced S6220-PG1  
Pelco Spectra Enhanced S6220-YB0  
Pelco Spectra Enhanced S6220-YB1  
Pelco Spectra Enhanced S6230-EG0  
Pelco Spectra Enhanced S6230-EG1  
Pelco Spectra Enhanced S6230-ESG0  
Pelco Spectra Enhanced S6230-ESG1  
Pelco Spectra Enhanced S6230-FW0  
Pelco Spectra Enhanced S6230-FW1  
Pelco Spectra Enhanced S6230-PB0  
Pelco Spectra Enhanced S6230-PB1  
Pelco Spectra Enhanced S6230-PG0  
Pelco Spectra Enhanced S6230-PG1  
Pelco Spectra Enhanced S6230-YB0  
Pelco Spectra Enhanced S6230-YB1  
Pelco Spectra Pro P1220-ESR0  
Pelco Spectra Pro P1220-ESR1  
Pelco Spectra Pro P1220-FWH0  
Pelco Spectra Pro P1220-FWH1  
Pelco Spectra Pro P1220-PWH0  
Pelco Spectra Pro P1220-PWH1  
Pelco Spectra Pro P1220-YSR0  
Pelco Spectra Pro P1220-YSR1  
Proimage PROI-501-V2  
Proimage PROI-502-V2  
Proimage PROI-503-V2  
Proimage PROI-504-V2  
Proimage PROIL-102-V2  
Qihan QH-D8416AM  
Redvision RV30-1080-IRWL-W-B  
Redvision RV30-720-IRWL-W-B  
Redvision RVX-IP30IRWLW



Samsung PND-9080R  
Samsung PNF-9010R  
Samsung PNF-9010RV  
Samsung PNF-9010RVM  
Samsung PNM-9020V  
Samsung PNM-9080VQ  
Samsung PNO-9080R  
Samsung PNP-9200RH  
Samsung PNV-9080R  
Samsung QND-6010R  
Samsung QND-6020R  
Samsung QND-6030R  
Samsung QND-6070R  
Samsung QND-7010R  
Samsung QND-7020R  
Samsung QND-7020RN  
Samsung QND-7030R  
Samsung QND-7030RN  
Samsung QND-7080R  
Samsung QNO-6010R  
Samsung QNO-6020R  
Samsung QNO-6030R  
Samsung QNO-6070R  
Samsung QNO-7010R  
Samsung QNO-7010RN  
Samsung QNO-7020R  
Samsung QNO-7020RN  
Samsung QNO-7030R  
Samsung QNO-7030RN  
Samsung QNO-7080R  
Samsung QNV-6010R  
Samsung QNV-6020R  
Samsung QNV-6030R  
Samsung QNV-6070R  
Samsung QNV-7010R  
Samsung QNV-7020R  
Samsung QNV-7030R  
Samsung QNV-7080R  
Samsung SNB-3002  
Samsung SNB-5004  
Samsung SNB-6003  
Samsung SNB-6004  
Samsung SNB-6004F  
Samsung SNB-6005  
Samsung SNB-6010B  
Samsung SNB-6011  
Samsung SNB-6011B  
Samsung SNB-7000  
Samsung SNB-7001  
Samsung SNB-7002  
Samsung SNB-7004  
Samsung SNB-8000  
Samsung SND-3082

Samsung SND-3082F  
Samsung SND-5010  
Samsung SND-5061N  
Samsung SND-6083  
Samsung SND-6084  
Samsung SND-6084R  
Samsung SND-7011  
Samsung SND-7080F  
Samsung SND-7082  
Samsung SND-7082F  
Samsung SND-7084  
Samsung SND-7084R  
Samsung SND-L5013  
Samsung SND-L5083R  
Samsung SND-L6012  
Samsung SND-L6013  
Samsung SND-L6013R  
Samsung SND-L6083R  
Samsung SNF-7010  
Samsung SNO-1080R  
Samsung SNO-5084R  
Samsung SNO-6084R  
Samsung SNO-7080R  
Samsung SNO-7084R  
Samsung SNO-8081R  
Samsung SNO-L5083R  
Samsung SNO-L6013R  
Samsung SNO-L6083R  
Samsung SNP-3120V  
Samsung SNP-3120VH  
Samsung SNP-5233  
Samsung SNP-5233H  
Samsung SNP-5300  
Samsung SNP-5321  
Samsung SNP-5321H  
Samsung SNP-5430  
Samsung SNP-6201  
Samsung SNP-6233  
Samsung SNP-6233H  
Samsung SNP-6320  
Samsung SNP-6320RH  
Samsung SNP-6321  
Samsung SNP-6321H  
Samsung SNP-L5233H  
Samsung SNP-L5233N  
Samsung SNP-L6233N  
Samsung SNP-L6233RH  
Samsung SNP-L6233RHN  
Samsung SNV-1080  
Samsung SNV-3082  
Samsung SNV-5084  
Samsung SNV-6012M  
Samsung SNV-6012MN

Samsung SNV-6013  
Samsung SNV-6084  
Samsung SNV-6084R  
Samsung SNV-6085R  
Samsung SNV-7082  
Samsung SNV-7084  
Samsung SNV-7084R  
Samsung SNV-8080  
Samsung SNV-8081R  
Samsung SNV-L5083R  
Samsung SNV-L6013RP  
Samsung SNV-L6014RMN  
Samsung SNV-L6083R  
Samsung SNZ-6320  
Samsung TNO-1050T  
Samsung XNB-6000  
Samsung XNB-8000  
Samsung XND-6010N  
Samsung XND-6020R  
Samsung XND-6080  
Samsung XND-6080P  
Samsung XND-6080R  
Samsung XND-6080RN  
Samsung XND-6080RV  
Samsung XND-6080V  
Samsung XND-8010R  
Samsung XND-8020R  
Samsung XND-8030R  
Samsung XND-8080R  
Samsung XND-8080RN  
Samsung XND-8080RV  
Samsung XNO-6010R  
Samsung XNO-6020R  
Samsung XNO-6080R  
Samsung XNO-8010R  
Samsung XNO-8020R  
Samsung XNO-8030R  
Samsung XNO-8080R  
Samsung XNP-6370RH  
Samsung XNV-6010N  
Samsung XNV-6020R  
Samsung XNV-6080  
Samsung XNV-6080N  
Samsung XNV-6080R  
Samsung XNV-6080RN  
Samsung XNV-8010R  
Samsung XNV-8020R  
Samsung XNV-8030R  
Samsung XNV-8080R  
Samsung XNV-8080RN  
SECO DVR 16C CH  
SECO DVR 8C CH  
Securicorp SCL-FBX02VF-SL24LDC

Securicorp SCL-FBX02VF-SL24UDC  
Securicorp SCL-MDM02FFIR-PV21D  
Securicorp SCL-MDM02FFIR-WD22VDP  
Securicorp SCL-OBL02MVIR-SL26UD04X  
Securicorp SCL-OBL02MVIR-SL26UD10X  
Securicorp SCL-OBL02MVIR-SL26UDZ  
Securicorp SCL-OBL02MVIR-WD22PDZ  
Securicorp SCL-OBL02VFIR-BE22D  
Securicorp SCL-OBL04MVIR-WD42PDZ  
Securicorp SCL-OBL04VFIR-WD42PD  
Securicorp SCL-SDM02MVIR-DP2230X  
Securicorp SCL-SDM03MVIR-WD3533X  
Securicorp SCL-VDM02MVIR-WD23VDZ  
Securicorp SCL-VDM02VFIR-SV23D  
Securicorp SCL-VDM02VFIR-WD23VD  
Securicorp SCL-VDM04VFIR-WD43VD  
Securicorp SCM-OBL02VFIR-LX99P  
Securicorp SCM-SDM020MVIR-5630X  
Securicorp SCM-VDM020VFIR-SX25P  
Securicorp SCM-VDM02VFIR-LX88P  
Securicorp SCP-MDM020FFIR-16AN  
Securicorp SCP-OBA020FFAR-12ZN  
Securicorp SCP-OBL020VFIR-04CN  
Securicorp SCP-OBL020VFIR-46RN  
Securicorp SCP-OBL020VFIR-WD04CN  
Securicorp SCP-OBL020VFIR-WD46RN  
Securicorp SCP-OBL02VFIR-66LN  
Securicorp SCP-VDM020VFIR-17BN  
Securicorp SCP-VDM020VFIR-20DP  
Securicorp SCP-VDM020VFIR-85BN  
Securicorp SCP-VDM020VFIR-WD17B  
Securicorp SCP-VDM020VFIR-WD17BN  
Securicorp SCP-VDM020VFIR-WD20DP  
Securicorp SCP-VDM02VFIR-77LN  
SG Security Power 16 ch  
SG Security SGS3000A  
SG Security SGS3004A  
SG Security SGS3008A  
Siera PRO 9020IP-2MPX  
Siera PRO 9020IP-3MPX  
Siera PRO 9020IP-5MPX  
Siera PRO 9050IP-3MPX  
Siera PRO 9050IP-5MPX  
Siera PRO 9130IP  
Siera SDR 1204HD  
Siera SDR 1208HD  
Siera SDR 1216-16  
Siera SDR 1216HD  
Siera SDR 1232HD  
Siera SDR 1316HD  
Siqua BC1103  
Siqua BL1002F4-EI  
Siqua BL1103M1-EI

Siqura CD1002F2-EI  
Siqura FD1002V1-EI;  
Siqura FD1103M1-EI  
Siqura FD1103M1-I  
Siqura PD1103Z2-E  
Siqura PD1103Z2-EI  
Siqura TKH EVE ONE-468076  
SkyVision RJ-SK2.0PTZ-26X  
Sony SNC-VM772R  
Squilla SQL-1510-MBE  
Squilla SQL-1510-MDOI  
Squilla SQL-1520-BESM  
Squilla SQL-1520-DOI  
Squilla SQL-1520-PTZ18X  
Sunell SN-TPC4200K/F  
Surveon CAM2441SC  
Surveon CAM3351R4  
Surveon CAM3351R6  
Surveon CAM6471EZ  
TEB TUB Camera  
TecVoz DVR-8304B  
TecVoz T1-LTV116  
TecVoz T1-SHY16  
TecVoz T1STVI04  
TecVoz T1-STVI16  
TecVoz T1-TVI08c  
TecVoz TD2304SS  
TecVoz TD2308SS  
TecVoz TD-2316ME  
TecVoz TD-2316SS  
TecVoz TD2416MD  
TecVoz TD-9442E2  
TecVoz TVZ AHD-1004  
TecVoz TVZ AHD-1008  
TecVoz TVZ AHD-1016  
TecVoz TVZ HF04  
TecVoz TVZ HF08  
TecVoz TVZ HF16  
TecVoz TVZ1004  
TecVoz TW-E304  
TecVoz TW-E308  
TecVoz TW-E316  
TecVoz TW-ICB130  
TecVoz TW-ICB200  
TecVoz TW-ICB400  
TecVoz TW-ICB400v  
TecVoz TW-IDM100  
TecVoz TW-IDM130  
TecVoz TW-IDM200  
TecVoz TW-IDM400  
TecVoz TW-IDM400v  
TecVoz TW-ISP300IR  
TecVoz TW-P3004

TecVoz TW-P3008  
TecVoz TW-P3016  
TecVoz TW-P5032  
Trivision NC-336PW  
Ubiquiti UVC  
Uniview DVS4116  
Uniview IPC-2122SR3-PF28-B  
Uniview IPC-2122SR3-PF36-B  
Uniview IPC-2122SR3-PF40-B  
Uniview IPC-2322EBR-DPZ28  
Uniview IPC-2322EBR-P  
Uniview IPC232E-IR3-PF36-DT  
Uniview IPC-252ERA-X22DUG  
Uniview IPC-312SR-VPF28  
Uniview IPC-322ER3-DVPF28  
Uniview IPC-3232ER-DV  
Uniview IPC-3232ER-VS  
Uniview IPC-3234SR-DV  
Uniview IPC-3612ER3-PF28-B  
Uniview IPC-6221LR-X20SP  
Uniview IPC-6222ER-X30P  
Uniview IPC-6222ER-X30P-B  
Uniview IPC6242SL-X22  
Uniview IPC6252SR-X22U  
Uniview IPC-742SR9-PZ30-32G  
Vacron VIT-UH825E  
Venetian IP51075  
Venetian IP-52128  
Venetian IP53075  
Venetian IP61075  
Venetian IP-62350  
Venetian IP-62362  
Venetian IP63075  
Venetian IP-FY6000  
Venetian NVR VE-9904  
Venetian NVR VE-9908  
Venetian NVR VE-9916  
Venetian VE-9916  
Vid8 VD1648H  
VideoTec UCHD1FTAZ00A  
VIDO G70HD820AT  
VIDO G70HD830  
Vivotek FD8166A  
Vivotek FD8166A-N  
Vivotek FD8167A  
Vivotek FD8169A  
Vivotek FD816BA-HF2  
Vivotek FD816BA-HT  
Vivotek FD816B-HF2  
Vivotek FD816B-HT  
Vivotek FD8182-F2  
Vivotek FD8367A  
Vivotek FD8367A-V

Vivotek FD8369A-V  
Vivotek FD836BA-HTV  
Vivotek FD836BA-HVF2  
Vivotek FD836B-HVF2  
Vivotek FD8382-ETV  
Vivotek FD9171-HT  
Vivotek FD9181-HT  
Vivotek FD9381-EHTV  
Vivotek FD9381-HTV  
Vivotek FE8182  
Vivotek FE9182-H  
Vivotek FE9381-EHV  
Vivotek FE9382-EHV  
Vivotek IB8369A  
Vivotek IB836BA-HF3  
Vivotek IB836BA-HT  
Vivotek IB9371-HT  
Vivotek IB9381-HT  
Vivotek IP8166  
Vivotek IP9181-H  
Vivotek MD8563-EHF2  
Vivotek MS8391-EV  
Vivotek SD9161-H  
Vivotek SD9361-EHL  
Vivotek SD9362-EHL  
Vivotek SD9364-EHL  
Vivotek VC8101  
Vumii Sii AT V2  
WCA DJ05CW130  
WCA LBH30S130  
WCA LBH30SL200  
WCA LBW60L200  
WCA PT7B022S200  
WellCom DVS101474

### 2.2.2 I/O Devices

CodBox 8822  
Commbox MIO-402  
CommVerge COMM4IO  
Fiber SenSys FD-322  
Fiber SenSys FD-508  
Fiber SenSys FD-525R  
Optex PIE-1  
ST Electronics AgilFence

## 2.3 Fixes

- Fixed a small issue in the management of connections that could cause memory access violation for invalid commands that were sent to the server
- The icons of I/O events (Alarm input) placed on a map would not "trigger" in case of an alarm
- The archiving system was sending 2 e-mails upon finish of the process if audio was being recorded along with video
- During media playback of multiple simultaneous cameras, the timeline of some cameras might not

load

- Fixed a problem upon importing a list of license plates with empty lines or invalid characters like comma
- Fixed a problem in communication drivers of American Dynamics devices that could cause a failure in communication at each 1 hour and 10 minutes
- Fixed a problem in PTZ drivers of analog cameras that could cause the system to send repeated PTZ commands
- Fixed a profile in RTSP server that could cause decoding error for MJPEG video
- When minimizing a monitor of Surveillance Client it could not appear in System Tray in case multiple instances were open simultaneously in the same monitor when using manual mode
- Fixed an issue with memory management when closing Surveillance Client when a camera was still selected
- Fixed a thread leaking problem on media playback. This problem could create multiple "dead" threads in the server.
- The search of LPR records with advanced AND and OR filters, when applied, was ignoring the date and time filter
- The server could randomly lose licenses due to an error when reading its MAC address
- The bookmark search was repeating the results of records from multiple cameras
- Texts on maps would not be properly displayed when the map object was initially loaded on screen
- Fixed a small problem in HTTP audio output drivers that could lead the system to send plain PCM audio instead of encoded.
- Fixed a multi-thread deadlock issue in the relay system that could cause a total crash of the server.
- Fixed small translation issues
- The system could not read the parameters of an URL without sub-paths. Example:  
`http://10.1.1.1:8055?parameter1=value1`
- Fixed a problem in media playback using DGF-KB1000 keyboard that would show an "Invalid time" message during the selection of time range
- Some objects in the map would be deactivated after update to version 7.1
- Under I/O device registration, after adding a new output action script it was required to close the registration screen and open it again so the action would be available for selection on events of the same device
- After minimizing the Surveillance Client, the list of views (from objects list) could vanish
- The saved position of panomorph or fisheye cameras in surveillance views was not being loaded when these views were loaded from inside a timer view
- Fixed a problem that could hang the media playback when playing backwards
- The archiving system would not delete some empty old folders
- Fixed a problem that could cause crash the server during load in case the I/O of a camera was activated and an event with action to send e-mail with images from the camera was triggered
- The status of I/O device ports in Administration Client was starting with 0 instead of 1
- In maps registration, a warning message will be displayed in case the server is not licensed. In some cases this alert message could be hidden behind the editor screen.
- Fixed a problem that was preventing the printing of any report from Surveillance Client in Standard and Explorer editions
- Fixed a problem in ONVIF communication driver that would keep a camera not working after a connection break
- Zoom commands for dewarped images of Vivotek fisheye cameras was not working
- Digifort HTTPS server was not working due to SSLv3 authentication. The authentication method was changed to TLS1.2
- During the download of data from recognized license plates in LPR search in Surveillance Client, the screen was not being properly updated
- Fixed a problem in LG communication drivers that could cause a server crash in case multiple cameras using this driver were not working
- Old Pelco models were no long working in version 7.1



- The editor of audio groups in Surveillance Client was removing old items from the list when new items were being added
- When a camera was deleted from the system through Administration Client, this could cause a negative effect in Surveillance Client in case this camera was being watched, possibly causing the crash of the Surveillance Client
- Upon saving user groups in Administration Client, the maps with rights over the group were not being live-updated
- Fixed a problem with dewarping of Samsung fisheye cameras
- Fixed a problem in the RTSP parser that could lose transmission sync if the camera sent the control character "\$" in a session ID
- Fixed a minor ONVIF compatibility issue with Axis cameras
- When exporting JPEG images in Surveillance Client of live or recorded cameras the system will now export to the correct file size
- When thousands of cameras (about 1500) are configured on a single server, the status of cameras above 1500 was not being updated on the Surveillance Client
- Fixed a problem in the RTSP server and RTSP drivers connecting to Digifort server that made it impossible to use media profiles with accented characters
- When the system sent an e-mail in the restore of communication with an equipment, the customized message configured in the event was not sent in the body of the e-mail
- The list of Surveillance Client objects did not allow double-clicking on views with the same name from different layouts (when set to display all views regardless of layout)
- Fixed an issue that could remove the privacy mask when close the camera in the privacy mask setting if the image was not yet displayed
- Fixed a problem that could corrupt unencrypted files after an encrypted exporting
- Fixed a problem of integration with Google Maps that could display script errors
- Fixed an issue with Verint communication drivers that was not doing the interlacing of 4CIF images
- Fixed an issue with positioning of multi-monitors when using full screen mode with multi-monitor in manual mode