

## AXIS 207/207W/207MW Network Cameras

True bandwidth-efficient MPEG-4 network cameras.



- > Simultaneous MPEG-4 and Motion JPEG
- > Built-in microphone
- > Wireless connectivity (207W/207MW)
- > Megapixel resolution (207MW)

AXIS 207 Network Cameras offer the best image quality in their class, providing excellent image quality also in poor lighting conditions. These network cameras are ideal for securing small businesses, home offices and residences over a local area network or the Internet.

AXIS 207 Network Cameras provide high bandwidth efficiency, thanks to their MPEG-4 implementation that includes motion estimation. Simultaneous MPEG-4 and Motion JPEG allow systems to be optimized for both image quality and bandwidth.

The built-in microphone enables remote users to not only view, but also listen in on an area and increase the monitoring options.

AXIS 207W and AXIS 207MW come with both wireless IEEE 802.11g and Ethernet network interface for flexible installation.

The megapixel resolution of AXIS 207MW allows important areas like entrances or checkouts to be monitored in great detail.



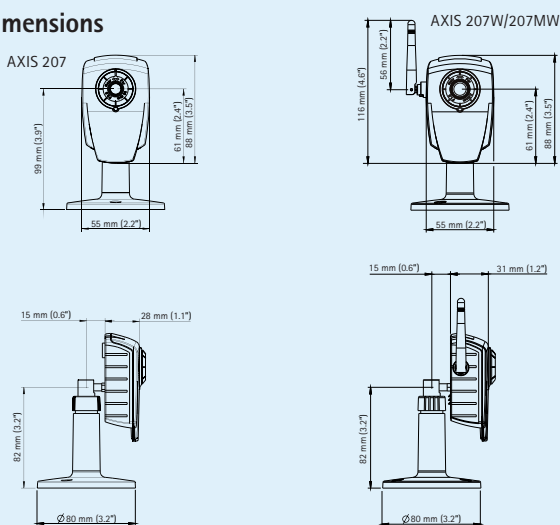
## Technical specifications – AXIS 207/207W/207MW Network Cameras

Camera	
<b>Models</b>	<b>AXIS 207:</b> VGA resolution, wired interface <b>AXIS 207W:</b> VGA resolution, wired and wireless interface <b>AXIS 207MW:</b> Megapixel resolution, wired and wireless interface
<b>Image sensor</b>	<b>AXIS 207/207W:</b> 1/4" Progressive scan RGB VGA CMOS <b>AXIS 207MW:</b> 1/3" Progressive scan RGB 1.3 Megapixel CMOS
<b>Lens</b>	<b>AXIS 207/207W:</b> 4.0 mm, F2.0, fixed iris, horizontal angle of view: 55° <b>AXIS 207MW:</b> 3.6 mm, F1.8, fixed iris, horizontal angle of view: 74°
<b>Light sensitivity</b>	<b>AXIS 207/207W:</b> 1-10000 lux, F2.0 <b>AXIS 207MW:</b> 2-10000 lux, F1.8
<b>Shutter time</b>	<b>AXIS 207/207W:</b> 1/10000 s to 1/2 s <b>AXIS 207MW:</b> 1/10000 s to 1/10 s
Video	
<b>Video compression</b>	MPEG-4 Part 2 (ISO/IEC 14496-2) Motion JPEG
<b>Resolutions</b>	<b>AXIS 207/207W:</b> up to 640x480 <b>AXIS 207MW:</b> up to 1280x1024
<b>Frame rate MPEG-4</b>	<b>AXIS 207/207W:</b> Up to 30 fps <b>AXIS 207MW:</b> Up to 7 fps at 1280x1024, up to 10 fps at 1280x720
<b>Frame rate Motion JPEG</b>	<b>AXIS 207/207W:</b> Up to 30 fps <b>AXIS 207MW:</b> Up to 12 fps at 1280x1024, up to 14 fps at 1280x720
<b>Video streaming</b>	Simultaneous MPEG-4 and Motion JPEG Controllable frame rate and bandwidth VBR/CBR MPEG-4
<b>Image settings</b>	Compression, rotation, color, brightness, contrast, white balance Text overlay
Audio	
<b>Audio streaming</b>	Simplex
<b>Audio compression</b>	AAC LC 8 kHz <b>AXIS 207W/207MW:</b> G.711 PCM 8 kHz, G.726 ADPCM 8 kHz Configurable bit rate
<b>Audio input/output</b>	Built-in microphone
Network	
<b>Wireless interface</b>	<b>AXIS 207W/207MW:</b> IEEE 802.11g/b
<b>Security</b>	Password protection <b>AXIS 207W/207MW:</b> IP address filtering, HTTPS encryption, WEP 64/128 bit, WPA-PSK, WPA2-PSK
<b>Supported protocols</b>	IPv4, HTTP, TCP, ICMP, QoS Layer 3 DiffServ, RTSP, RTP, UDP, IGMP, RTCP, SMTP, FTP, DHCP, UPnP, Bonjour, ARP, DNS, DynDNS, SOCKS, NTP <b>AXIS 207W/MW:</b> IPv6, HTTPS, SNMPv1/v2c/v3 (MIB-II)

System integration	
<b>Application Programming Interface</b>	Open API for software integration, including VAPIX® from Axis Communications available at <a href="http://www.axis.com">www.axis.com</a>
<b>Intelligent video</b>	Video motion detection, audio detection
<b>Alarm triggers</b>	Intelligent video and external input
<b>Alarm events</b>	File upload via FTP, HTTP and email Notification via email, HTTP and TCP External output activation
<b>Video buffer</b>	<b>AXIS 207/207W:</b> 4 MB pre- and post alarm <b>AXIS 207MW:</b> 2 MB pre- and post alarm
General	
<b>Processors and memory</b>	ARTPEC-A 32 MB RAM <b>AXIS 207:</b> 4 MB Flash <b>AXIS 207W/207MW:</b> 8 MB Flash
<b>Power</b>	<b>AXIS 207:</b> 4.9 – 5.1 V DC, max 2.5 W <b>AXIS 207W:</b> 4.9 – 5.1 V DC, max 3.5 W <b>AXIS 207MW:</b> 4.9 – 5.1 V DC, max 4.0 W
<b>Connectors</b>	RJ-45 Ethernet 10BASE-T/100BASE-TX, Auto-MDIX Terminal block for 1 alarm input, 1 output and alternative power connection
<b>Operating conditions</b>	5 – 50 °C (41 – 122 °F) Humidity 20 – 80% RH (non-condensing)
<b>Approvals</b>	<b>AXIS 207:</b> EN 55022 Class B, EN 61000-3-2, EN 61000-3-3, EN 55024, EN 61000-6-1, FCC Part 15 Subpart B Class B, ICES-003 Class B, VCCI Class B, C-tick AS/NZS 3548, EN 60950-1 <b>AXIS 207W/207MW:</b> EN 300 328, EN 301 489, FCC Part 15 Subpart B & C Class B, ICES-003 Class B, RSS210, VCCI Class B, TELEC, C-tick AS/NZS 4771, MIC, EN 60950-1 Power supply: EN 60950-1, UL, CSA
<b>Weight</b>	<b>AXIS 207:</b> 180 g (0.39 lb.) <b>AXIS 207W/207MW:</b> 190 g (0.42 lb.)
<b>Included accessories</b>	Power supply, stand, clamp, connector block, Installation Guide, CD with installation tool, software and User's Manual, Windows decoder 1-user license

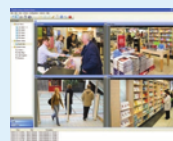
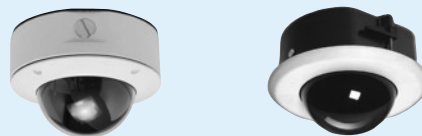
More information is available at [www.axis.com](http://www.axis.com)

### Dimensions



### Optional accessories

Various housings, AXIS 207 only



For information on AXIS Camera Station and video management software from Axis' Application Development Partners, see [www.axis.com/products/video/software/](http://www.axis.com/products/video/software/)