

DynaHawk™ ZM Series

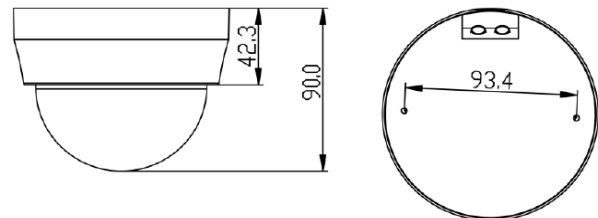
Ultra High Definition Mini Dome Camera



The Ultra High Definition Multiple Streams Mini Dome IP Camera is an easy setup camera with PoE supported to reduce complicate cabling without sacrificing performance. Quad Streams Compression (H.264 Baseline / Main / High Profile / SVC + MJPEG) are supported for efficient bandwidth and storage management. Up to 4k2k real time resolution is offered for providing high definition images. Also, the H.264 encoder performance can up to 1080p 60 fps. For dark environments, the camera has incorporated WDR, 3DNR and Day/Night ICR technologies to capture clear images in lowlight conditions.

■ Key Features

- Sony Progressive Scan CMOS Sensor 8M / 6M / 4M / 3M Resolution
- Multi-exposure HDR (Multi-exposure Sensors is required)*
- Low Latency Streaming
- Low Power Consumption on Encoding
- Quad codec support (H.264 Baseline / Main Profile / High Profile / SVC + MJPEG)
- Quad Streams Support
- Tampering Alarm
- Motion Detection
- Text Overlay and Privacy Masks
- 3D Motion Compensated Noise Reduction (MCTF)
- Network Failure Detection
- True Day/Night Function (ICR)
- IR LED Module support (working distance up to 40m) *
- Weatherproof (IP66 International)*
- 64GB micro SD Card support
- ONVIF Profile S Support



DynaHawk™ ZM Series - Mini Dome IP Camera

Camera		Z4SA-M	Z4SF-M
Image Sensor		1/1.8" Sony Progressive CMOS	1/1.7" Sony Progressive CMOS
Effective Pixels		6M	12M
Minimum Illumination		Color B/W	TBD TBD
Shutter Speed		1 ~ 1/10000 sec.	
Lens			
Lens		Motorized	Motorized
Focal Length		4-8 mm	3.3-8 mm
F Number		F1.6	F1.5
FOV		TBD	TBD
Operation			
Multiple Languages		English / French / German / Italian / Japanese / Korean / Portuguese / Russian / Simplified Chinese / Spanish / Traditional Chinese	
Iris Control*		DC Iris / P-iris	
Backlight Compensation		On/Off	
White Balance		Auto / Manual / ATW / Indoor / Outdoor	
Noise Reduction 3D		Low / Middle / High / Off (w/ Motion Compensation)	
Wide Dynamic Range		Gamma WDR On / Off	
Privacy Mask		On/Off	
Brightness		Manual	
Exposure		Auto / Manual	
Sharpness		Manual	
Contrast		Manual	
Saturation		Manual	
Hue		Manual	
Digital Zoom		Support	
Motion Detection		On / Off / By Schedule	
Privacy Mask Type		Color	
ICR		Auto / On / Off / Smart	
ICR + IR LED*		Auto / LED On / LED Off / Smart IR / Light Sensor	
Tampering Alarm		On / Off / By Schedule	
Two-way Audio		Line in / Line Out	
Audio Compression		G.711/G.726	
Network			
Interface		RJ-45, 1Gbps Ethernet	
Video Compression		MJPEG / H.264 (MPEG-4 Part 10/AVC) Baseline / Main Profile / High Profile / SVC	
Single stream		H.264 6M (3072x2048) @25/30 fps H.264 4K2K (3840x2160) @25/30fps	
Dual Streams		H.264 6M (3072x2048) @25/30 fps + H.264 720P @25/30fps H.264 1080P @50/60 fps + H.264 1080P @25/30 fps Note: 1 of the streamings can be MJPEG Note: 1 of the streamings can be MJPEG	
Quad Streams		H.264 1080P @50/60 fps + H.264 SXGA @25/30 fps + H.264 720P @25/30 fps + H.264 D1 @25/30 fps Note: 1 of the streamings can be MJPEG	
Video Resolution		H.264 6M (3072 x 2048) / Full HD 1080P / SXGA / HD / 720P / XGA / SVGA / D1 / VGA / 4K2K (3840 x 2160) / Full HD 1080P / SXGA / 720P / XGA / SVGA / D1 / VGA / CIF / QVGA	
MJPEG		Full HD 1080P / SXGA / 720P / XGA / SVGA / D1 / VGA / CIF / QVGA	
Protocol		IPv4/v6, TCP/IP, UDP, RTP, RTSP, HTTP, HTTPS, ICMP, FTP, SMTP, DHCP, PPPoE, UPnP, IGMP, SNMP, QoS, ONVIF	
Security		HTTPS / IP Filter / IEEE 802.1X	
Alarm Input		1 Set 5V 10kΩ pull up	
Alarm Output		1 Set Photo Relay Output 300V DC/AC	
Event Notification		HTTP / FTP / SMTP	
Micro SD		microSDHC 32GB support	
Supported Web Browser		Internet Explorer (6.0+) / Chrome / Firefox / Safari	
User Account		20	
Password Levels		User and Administrator	
Mechanical			
Built-in IR Illuminator*		Working Distance up to 40 m Wavelength 850 nm Number of LEDs 6	
LED Indicator		Power / Link / ACT	
Connectors		Type Indoor Alarm 4 of 8 Pin Terminal Block (Female) Power 3 Pin Terminal Block (Female) Ethernet RJ-45 Analog Video 1.0 Vp-p / 75 Ω / BNC cable* Audio* 4 of 8 Pin Terminal Block (Female)	
General			
Operating Temperature		-10°C ~ 50°C (14° ~ 122°F)	
Humidity		10% ~ 90%, No Condensation	
Weatherproof Standard*		IP66	
Dimension		Ø 117 x 90 mm (Ø 4.6 x 3.6 in.)	
Weight		280g	
Power Source		DC 12V / AC 24V / PoE	
Power Consumption		TBD	
Regulatory		CE / FCC	

* mark for optional items

Product specification and availability are subject to change without notice.