

# FlexWATCH



## Selection Guide

### Box Type Network Camera

- FW-1170-VO
- FW-1173-VI /FW-1173B-VI
- FW-1173-DS /FW-1173B-DS
- FW-1173-MM /FW-1173B-MM
- FW-1173-MI /FW-1173B-MI

### Dome Type Network Camera

- FW-1175- VI
- FW-1175-DS
- FW-1175-MM
- FW-1176-DS
- FW-1176-MM
- FW-1177-DE
- FW-1178-PE

### Network Video Server

- FW-3170
- FW-3170-A
- FW-3450
- FW-3471
- FW-3872

### Network Video Recorder

- FW-5071
- FW-5450
- FW-5870

### CMS S/W , Server S/W & TOOL







- FW-Manager
- ISENS
- IPCSTDVNS
- VSS
- IP Install Wizard

Model Name	FW-1170-VO	FW-1173-VI FW-1173B-VI	FW-1173-DS FW-1173B-DS	FW-1173-MM FW-1173B-MM	FW-1173-MI FW-1173B-MI
Image Sensor	1/4" VGA CMOS	1/4" VGA progressive scan CCD	1/3" 410 K CCD	1.3 M progressive scan CMOS	1.3 M progressive scan CCD
Camera Type	BOX Camera Type	BOX Camera Type	BOX Camera Type	BOX Camera Type	BOX Camera Type
Outdoor Use	indoor only	with outdoor housing	with outdoor housing	with outdoor housing	with outdoor housing
Lens	4.3 mm Fixed	CS Mount , Fixed, Varifocal, DC IRIS	CS Mount , Fixed, Varifocal, DC IRIS	Fixed Lens Varifocal Lens,Manual IRIS	Fixed Lens Varifocal Lens,Manual IRIS
Min. illumination/	4 lux 1500mV/Lux.sec	3 lux, F1.2 0.1 lux/F1.4 Exposure 1/5sec	Color 0.3 Lux, BW 0.002 Lux F1.2 /540 TV line,	2 - 1,000lux, F1.8	1.0 lux, F1.2 30 IRE 0.1 lux AGC/DSS ON
Video Compression	H.264/MJPEG	H.264/MJPEG	H.264/MJPEG	H.264/MJPEG	H.264/MJPEG
Max Streaming Speed	Max 30 fps @ VGA	Max 30 fps @ VGA	Max 30 fps @ D1	Max 15fps@1280X1024	Max 15fps@1280X1024
Audio Support	2 way	2 way	2 way	2 way	2 way
Audio Compression	8bit PCM, 8Khz , 8KByte/sec	8bit PCM, 8Khz , 8KByte/sec	8bit PCM, 8Khz , 8KByte/sec	8bit PCM, 8Khz , 8KByte/sec	8bit PCM, 8Khz , 8KByte/sec
Video in/Out	built-in Vin	built-in Vin/	built-in Vin/ Composite V out	built-in Vin	built-in Vin
Audio in/Out	built-in Mic. / 1 out	1 in / 1 out	1 in / 1 out	1 in / 1 out	1 in / 1 out
Alarm in/Out	1 DI / 1 DO	1 DI / 1 DO	1 DI / 1 DO	1 DI / 1 DO	1 DI / 1 DO
Serial port	COM Optional USB 2.0 at Q2,2010	COM/RS-485 USB 2.0 ( FW-1173B-VI only )	COM/RS-485 USB 2.0 ( FW-1173B-DS only )	COM/RS-485 USB 2.0 ( FW-1173B-MM only )	COM/RS-485 USB 2.0 ( FW-1173B-MI only )
LAN Interface	100-base-T (PoE/PwE) Optional WIFI(802.11g) at Q2,	100-base-T (PoE/PwE) 802.11g ( FW-1173B-VI only )	100-base-T (PoE/PwE) 802.11g ( FW-1173B-DS only )	100-base-T (PoE/PwE) 802.11g ( FW-1173B-MM only )	100-base-T (PoE/PwE) 802.11g ( FW-1173B-MI only )
Rate Control	VBR/CBR (H.264, 64k~12Mbps)	VBR/CBR (H.264, 64k~12Mbps)	VBR/CBR (H.264, 64k~12Mbps)	VBR/CBR (H.264, 64k~12Mbps)	VBR/CBR (H.264, 64k~12Mbps)
Network Protocol	HTTP, HTTPS, RTP/RTSP, Multicast, NTP, Telnet, Ftp, SMTP, DHCP, etc	HTTP, HTTPS, RTP/RTSP, Multicast, NTP, Telnet, Ftp, SMTP, DHCP, etc	HTTP, HTTPS, RTP/RTSP, Multicast, NTP, Telnet, Ftp, SMTP, DHCP, etc	HTTP, HTTPS, RTP/RTSP, Multicast, NTP, Telnet, Ftp, SMTP, DHCP, etc	HTTP, HTTPS, RTP/RTSP, Multicast, NTP, Telnet, Ftp, SMTP, DHCP, etc
Viewer	IE6, CMS, QuickTime, Media	IE6, CMS, QuickTime, Media	IE6, CMS, QuickTime, Media Player	IE6, CMS, QuickTime, Media	IE6, CMS, QuickTime, Media
Remote Admin.	Web based Control/ Upgrade	Web based Control/ Upgrade	Web based Control/ Upgrade	Web based Control/ Upgrade	Web based Control/ Upgrade
Advanced Service	e-mail / ftp alarm buffering event notification	e-mail / ftp alarm buffering event notification	e-mail / ftp alarm buffering event notification	e-mail / ftp alarm buffering event notification	e-mail / ftp alarm buffering event notification
Dynamic IP	DDNS/uPnP support	DDNS/uPnP support	DDNS/uPnP support	DDNS/uPnP support	DDNS/uPnP support
Motion Detection	built-in PIR Sensor	H/W Detection	H/W Detection	H/W Detection	H/W Detection
Security	multilevel password channel-wise privilege	multilevel password channel-wise privilege	multilevel password channel-wise privilege	multilevel password channel-wise privilege	multilevel password channel-wise privilege
Certification	MIC/FCC/CE, RoHS	MIC/FCC/CE, RoHS	MIC/FCC/CE, RoHS	MIC/FCC/CE, RoHS,IP66	MIC/FCC/CE, RoHS,IP66
Working Condition	0℃ ~ +50℃ / 20% ~ 80% RH	0℃ ~ +50℃ / 20% ~ 80% RH	0℃ ~ +50℃ / 20% ~ 80% RH	0℃ ~ +50℃ / 20% ~ 80% RH	0℃ ~ +50℃ / 20% ~ 80% RH
Power Supply	SMPS DC 12V/1A [AC 100/240V , 50/60HZ]	SMPS DC 12V/1A [AC 100/240V , 50/60HZ]	SMPS DC 12V/1A [AC 100/240V , 50/60HZ]	SMPS DC 12V/1A [AC 100/240V , 50/60HZ]	SMPS DC 12V/1A [AC 100/240V , 50/60HZ]
Size/Weight	64 (W) x 113 (H) x 47 (D) (in mm) 0.285Kg w/o Power Supply	70 (W) x 116 (D) x 52 (H) (in mm) 0.285Kg w/o Power Supply	70 (W) x 116 (D) x 52 (H) (in mm) 0.306Kg w/o Power Supply	70 (W) x 116 (D) x 52 (H) (in mm) 0.285Kg w/o Power Supply	70 (W) x 116 (D) x 52 (H) (in mm) 0.285Kg w/o Power Supply

Network Camera ( Dome Type )

							
<b>Model Name</b>	<b>FW-1175-VI</b>	<b>FW-1175-DS</b>	<b>FW-1175-MM</b>	<b>FW-1176-DS</b>	<b>FW-1176-MM</b>	<b>FW-1177-DE</b>	<b>FW-1178-PE</b>
<b>Image Sensor</b>	1/4" VGA progressive scan CCD	1/3" 410 K CCD	1/3" 1.3 M progressive scan CMOS	1/3" 410 K CCD	1/3" 1.3 M progressive scan CMOS	1/4" CCD	1/4" CCD
<b>Camera Type</b>	Vandal Proof Dome Camera Type	Vandal Proof Dome Camera Type	Vandal Proof Dome Camera Type	Dome Camera Type	Dome Camera Type	High Speed Dome PTZ	Mini Speed Dome PTZ
<b>Outdoor Use</b>	IP66, outdoor, Vandal Proof	IP66, outdoor, Vandal Proof	IP66, outdoor, Vandal Proof	Indoor Only	Indoor Only	IP66, outdoor	IP66, outdoor, Vandal Proof
<b>Lens</b>	Fixed, Varifocal, 2.8~ 10.5mm DC IRIS	Fixed, Varifocal, 2.8~ 10.5mm DC IRIS	3.6mm fixed / 2.8~ 11mm Varifocal	Fixed, Varifocal, 2.8~ 10.5mm DC IRIS	3.6mm fixed / 2.8~ 11mm Varifocal	3.5~ 115.5mm 33x optical, 12X digital	3.8 ~ 38mm 10x optical, 10X digital
<b>Min. illumination/</b>	0.1 lux, F1.4	Color 0.3 Lux, BW 0.002 Lux 560 TV line, F1.2	2 -10000 lux, F1.8	Color 0.3 Lux, BW 0.002 Lux 560 TV line, F1.2	1.0V / Lux.sec (550nm)	Color: 0.4 Lux, F1.6 D&N: 0.1 Lux, F1.6	Color 0.7 Lux, F1.8 D&N : 0.0002 Lux F1.8 (ICR)
<b>Video Compression</b>	H.264/MJPEG	H.264/MJPEG	H.264/MJPEG	H.264/MJPEG	H.264/MJPEG	H.264/MJPEG	H.264/MJPEG
<b>Max Streaming Speed</b>	Max 30 fps @ VGA	Max 30 fps @ D1	Max 15 fps @ 1280X1024	Max 30 fps @ D1	Max 15 fps @ 1280X1024	Max 30 fps @ D1	Max 30 fps @ D1
<b>Audio Support</b>	2 way	2 way	2 way	2 way	2 way	2 way	2 way
<b>Audio Compression</b>	8bit PCM, 8Khz , 8KByte/sec	8bit PCM, 8Khz , 8KByte/sec	8bit PCM, 8Khz , 8KByte/sec	8bit PCM, 8Khz , 8KByte/sec	8bit PCM, 8Khz , 8KByte/sec	8bit PCM, 8Khz , 8KByte/sec	8bit PCM, 8Khz , 8KByte/sec
<b>Video in/Out</b>	built-in Vin/	built-in Vin/ Composite V out	built-in Vin	built-in Vin/ Composite V out	built-in Vin	built-in Vin/ Composite V out	built-in Vin/ Composite V out
<b>Audio in/Out</b>	1 in / 1 out	1 in / 1 out	1 in / 1 out	1 in / 1 out	1 in / 1 out	1 in / 1 out	1 in / 1 out
<b>Alarm in/Out</b>	1 DI / 1 DO	1 DI / 1 DO	1 DI / 1 DO	1 DI / 1 DO	1 DI / 1 DO	1 DI / 1 DO	1 DI / 1 DO
<b>Serial port</b>	COM/RS-485	COM/RS-485	COM/RS-485	COM/RS-485	COM/RS-485	COM/Built-in RS485	COM/Built-in RS485
<b>LAN Interface</b>	100-base-T (PoE/PwE)	100-base-T (PoE/PwE)	100-base-T (PoE/PwE)	100-base-T (PoE/PwE)	100-base-T (PoE/PwE)	100-base-T	100-base-T
<b>Rate Control</b>	VBR/CBR (H.264, 64k~12Mbps)	VBR/CBR (H.264, 64k~12Mbps)	VBR/CBR (H.264, 64k~12Mbps)	VBR/CBR (H.264, 64k~12Mbps)	VBR/CBR (H.264, 64k~12Mbps)	VBR/CBR (H.264, 64k~12Mbps)	VBR/CBR (H.264, 64k~12Mbps)
<b>Network Protocol</b>	HTTP, HTTPS, RTP/RTSP, Multicast, NTP, Telnet, Ftp, SMTP, DHCP, etc	HTTP, HTTPS, RTP/RTSP, Multicast, NTP, Telnet, Ftp, SMTP, DHCP, etc	HTTP, HTTPS, RTP/RTSP, Multicast, NTP, Telnet, Ftp, SMTP, DHCP, etc	HTTP, HTTPS, RTP/RTSP, Multicast, NTP, Telnet, Ftp, SMTP, DHCP, etc	HTTP, HTTPS, RTP/RTSP, Multicast, NTP, Telnet, Ftp, SMTP, DHCP, etc	HTTP, NTP, ARP, Telnet, Ftp, SMTP, DHCP, etc	HTTP, NTP, ARP, Telnet, Ftp, SMTP, DHCP, etc
<b>Viewer</b>	IE6, CMS, QuickTime, Media	IE6, CMS, QuickTime, Media	IE6, CMS, QuickTime, Media	IE6, CMS, QuickTime, Media	IE6, CMS, QuickTime, Media	IE6, CMS	IE6, CMS
<b>Remote Admin.</b>	Web based Control/ Upgrade	Web based Control/ Upgrade	Web based Control/ Upgrade	Web based Control/ Upgrade	Web based Control/ Upgrade	Web based Control/ Upgrade	Web based Control/ Upgrade
<b>Advanced Service</b>	e-mail / ftp alarm buffering event notification	e-mail / ftp alarm buffering event notification	e-mail / ftp alarm buffering event notification	e-mail / ftp alarm buffering event notification	e-mail / ftp alarm buffering event notification	e-mail / ftp alarm buffering event notification	e-mail / ftp alarm buffering event notification
<b>Dynamic IP</b>	DDNS/uPnP support	DDNS/uPnP support	DDNS/uPnP support	DDNS/uPnP support	DDNS/uPnP support	DDNS/uPnP support	DDNS/uPnP support
<b>Motion Detection</b>	H/W Detection	H/W Detection	H/W Detection	H/W Detection	H/W Detection	H/W Detection	H/W Detection
<b>Security</b>	multilevel password channel-wise privilege	multilevel password channel-wise privilege	multilevel password channel-wise privilege	multilevel password channel-wise privilege	multilevel password channel-wise privilege	multilevel password channel-wise privilege	multilevel password channel-wise privilege
<b>Certification</b>	MIC/FCC/CE, RoHS, IP66	MIC/FCC/CE, RoHS, IP66	MIC/FCC/CE, RoHS, IP66	MIC/FCC/CE, RoHS, IP66	MIC/FCC/CE, RoHS, IP66	MIC/FCC/CE, RoHS, IP66	MIC/FCC/CE, RoHS, IP66
<b>Working Condition</b>	0°C ~ +50°C / 20% ~ 80% RH	0°C ~ +50°C / 20% ~ 80% RH	0°C ~ +50°C / 20% ~ 80% RH	0°C ~ +50°C / 20% ~ 80% RH	0°C ~ +50°C / 20% ~ 80% RH	0°C ~ +50°C / 20% ~ 80% RH	0°C ~ +50°C / 20% ~ 80% RH
<b>Power Supply</b>	SMPS DC 12V/1A [AC 100/240V , 50/60HZ]	SMPS DC 12V/1A [AC 100/240V , 50/60HZ]	SMPS DC 12V/1A [AC 100/240V , 50/60HZ]	SMPS DC 12V/1A [AC 100/240V , 50/60HZ]	SMPS DC 12V/1A [AC 100/240V , 50/60HZ]	AC 24V/ 1.5A	SMPS DC 12V/3A [AC 100/240V , 50/60HZ]
<b>Size/Weight</b>	145pi x 120 (H) (in mm) About 0.885Kg w/o Power Supply	145pi x 120 (H) (in mm) About 0.885Kg w/o Power Supply	145pi x 120 (H) (in mm) About 0.85Kg w/o Power Supply	150pi * 107.2mm(H) About 0.370Kg w/o power supply.	150pi * 107.2mm(H) About 0.370Kg w/o power supply.	216.8 Ø X 289.2 (H)mm 5.5Kg (without Power )	Dome : ø115mm Housing : ø165 x 101.5(H)mm About 2.4Kg

## Network Video Server

					
<b>Model Name</b>	<b>FW-3170</b>	<b>FW-3171</b>	<b>FW-3450</b>	<b>FW-3471</b>	<b>FW-3872</b>
<b>Camera Interface</b>	Composite(NTSC/PAL)	Composite(NTSC/PAL)	Composite(NTSC/PAL)	Composite(NTSC/PAL)	Composite(NTSC/PAL)
<b>Channel</b>	1	1	4	4	8
<b>Video encoding mode</b>	Progressive mode	Interlace mode	Interlace mode	Progressive mode	Progressive mode
<b>Video Compression</b>	H.264 / MJPEG	H.264 / MJPEG	MPEG-4 / MJPEG	H.264 / M-JPEG	H.264 / M-JPEG
<b>Max streaming speed</b>	Max 30 fps @ D1	Max 30 fps @ D1	Max 30 fps @ D1	Max 120 fps @ D1	Max 240 fps @ D1
<b>Audio Support</b>	2 way	2 way	2 way	2 way	2 way
<b>Audio Compression</b>	8bit PCM, 8Khz , 8KByte/sec	8bit PCM, 8Khz , 8KByte/sec	4bit ADPCM, 8Khz , 2KByte/sec	4 bit G.723 , 8Khz , 6KByte/sec	4 bit G.723 , 8Khz , 6KByte/sec
<b>Rack mountable</b>	N.A.	N.A.	Optional rack mount kit	Optional rack mount kit	Rack Mountable
<b>Video in/Out</b>	1 in / 1 out	1 in / 1 out	4 in / 1 Quad Out	4 in / 1 Quad Out	8 in / 2 Quad Out
<b>Audio in/Out</b>	1 in / 1 out	1 in / 1 out	4 in / 1 out	4 in / 1 out	8 in / 2 out
<b>Alarm in/Out</b>	1 DI / 1 DO	1 DI / 1 DO	4 DI / 4 DO	4 DI / 4 DO	8 DI / 8 DO
<b>Serial port</b>	RS-232C/RS-485	RS-232C/RS-485	RS-232C/RS-485	RS-232C/RS-485	RS-232C/RS-485
<b>LAN Interface</b>	100-Base-T (PoE/PwE)	2 X 100-Base-T (PoE/PwE)	100-Base-T	100/1000-Base-T	2 X 100/1000-base-T
<b>Rate Control</b>	VBR /CBR (H.264, 32k~12Mbps)	VBR /CBR (H.264, 32k~12Mbps)	VBR /CBR (MPEG-4, 32k~2Mbps)	VBR /CBR (H.264, 32k~12Mbps)	VBR /CBR (H.264, 32k~12Mbps)
<b>Network Protocol</b>	HTTP, HTTPS, RTP/RTSP, Multicast, NTP, ARP, Telnet, Ftp, SMTP, DHCP, etc	HTTP, HTTPS, RTP/RTSP, Multicast, NTP, ARP, Telnet, Ftp, SMTP, DHCP, etc	HTTP, HTTPS, RTP/RTSP, Multicast, NTP, ARP, Telnet, Ftp, SMTP, DHCP, etc	HTTP, HTTPS, RTP/RTSP, Multicast, NTP, ARP, Telnet, Ftp, SMTP, DHCP, etc	HTTP, HTTPS, RTP/RTSP, Multicast, NTP, ARP, Telnet, Ftp, SMTP, DHCP, etc
<b>Viewer</b>	IE6, VLC, QuickTime, MediaPlayer, CMS	IE6, VLC, QuickTime, MediaPlayer, CMS	IE6, VLC, QuickTime, MediaPlayer, CMS	IE6, VLC, QuickTime, MediaPlayer, CMS	IE6, VLC, QuickTime, MediaPlayer, CMS
<b>Remote Admin.</b>	Web based Administration, Setup, Control, and Upgrade	Web based Administration, Setup, Control, and Upgrade	Web based Administration, Setup, Control, and Upgrade	Web based Administration, Setup, Control, and Upgrade	Web based Administration, Setup, Control, and Upgrade
<b>Advanced Service</b>	e-mail / ftp alarm buffering event notification	e-mail / ftp alarm buffering event notification	e-mail / ftp alarm buffering event notification	e-mail / ftp alarm buffering event notification	e-mail / ftp alarm buffering event notification
<b>Dynamic IP</b>	DDNS/uPnP support	DDNS/uPnP support	DDNS/uPnP support	DDNS/uPnP support	DDNS/uPnP support
<b>Motion</b>	H/W Detection	H/W Detection	H/W Detection	H/W Detection	H/W Detection
<b>Security</b>	multilevel password channel-wise privilege	multilevel password channel-wise privilege	multilevel password channel-wise privilege	multilevel password channel-wise privilege	multilevel password channel-wise privilege
<b>Certification</b>	MIC/FCC/CE, RoHS	MIC/FCC/CE, RoHS	MIC/FCC/CE, RoHS	MIC/FCC/CE, RoHS	MIC/FCC/CE, RoHS
<b>Working Condition</b>	0℃ ~ +50℃ / 20% ~ 80% RH	0℃ ~ +50℃ / 20% ~ 80% RH	0℃ ~ +50℃ / 20% ~ 80% RH	0℃ ~ +50℃ / 20% ~ 80% RH	0℃ ~ +50℃ / 20% ~ 80% RH
<b>Power Supply</b>	SMPS DC 12V/800mA [AC 100~240V , 50/60HZ]	SMPS DC 12V/800mA [AC 100~240V , 50/60HZ]	SMPS DC 12V/3A [AC 100~240V , 50/60HZ]	SMPS DC 12V/5A [AC 100~240V , 50/60HZ]	SMPS DC 12V/5A [AC 100~240V , 50/60HZ]
<b>Size/Weight</b>	84(W)x110(D)x35(H)mm 214g without SMPS	84(W)x110(D)x35(H)mm 214g without SMPS	140(W)x155(D)x44(H) 600g without SMPS	140(W)x290(D)x44(H) TBA	432(W)x214(D)x44.1(H)mm TBA

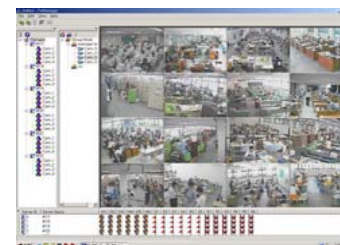
1. Availability: FW 3171, 3471, 3870 will be available at Q2, 2010

2. Above specifications can be changed without prior notice.

## Network Video Recorder

			
<b>Model Name</b>	<b>FW-5071</b>	<b>FW-5470</b>	<b>FW-5870</b>
<b>Max. IP Stream Proxy/Recording</b>	16 IP Stream Channel ( Multivendor IP Camera Support)	8 IP Stream Channel ( Multivendor IP Camera Support)	8 IP Stream Channel ( Multivendor IP Camera Support)
<b>Analog Video Input Channel</b>	N.A.	4 Ch	8 Ch
<b>HDD</b>	1.5 SATA	1.5 SATA	1.5 SATA
<b>Analog Video Input Compression</b>	no built-in Analog Video Input	H.264/MJPEG	H.264/MJPEG
<b>IP Stream Recording</b>	H.264/MPEG4/MJPEG multivendor stream support	H.264/MPEG4/MJPEG multivendor stream support	H.264/MPEG4/MJPEG multivendor stream support
<b>Max streaming speed</b>	Max 120 fps @D1	Max 120 fps @D1	Max 120 fps @D1
<b>Max recording rate</b>	Max 120 fps@D1	H.264/MJPEG	Max 120 fps@D1
<b>Audio Support</b>	N.A.	2 way	2 way
<b>Audio Compression</b>	N.A.	4bit G.723, 8Khz , 6KByte/sec	4bit G.723, 8Khz , 6KByte/sec
<b>Peripheral Interface</b>	USB2.0, e-SATA	USB2.0	USB2.0
<b>Rack mountable</b>	optional rack bracket	optional rack bracket	optional rack bracket
<b>Video in/Out</b>	N.A.	4 in / 1 Quad Out	4 in / Multiplexed Out X 2
<b>Audio in/Out</b>	N.A.	4 in / 1 out	8 in / 1 out
<b>Alarm in/Out</b>	N.A.	4 DI / 4 DO	8 DI / 8 DO
<b>Serial port</b>	RS-232C	RS-232C/RS-485	RS-232C/RS-485
<b>LAN Interface</b>	10/100/1000-base-T	10/100/1000-base-T	10/100/1000-base-T
<b>Rate Control</b>	N.A.	VBR/CBR (H.264, 32k~2Mbps)	VBR/CBR (H.264, 32k~2Mbps)
<b>Network Protocol</b>	HTTP,NTP,ARP,Telnet,Ftp,SMTP,DHCP, Multicast,etc	HTTP,HTTPS,RTP/RTSP,NTP, ARP,Telnet,Ftp,SMTP,DHCP, Multicast,etc	HTTP,HTTPS,RTP/RTSP,NTP, ARP,Telnet,Ftp,SMTP,DHCP, Multicast,etc
<b>Viewer</b>	IE6, CMS	IE6, CMS, QuickTime, Media Player	IE6, CMS, QuickTime, Media Player
<b>Remote Admin.</b>	Web based Administration, Setup, Control, and Upgrade	Web based Administration, Setup, Control, and Upgrade	Web based Administration, Setup, Control, and Upgrade
<b>Advanced Service</b>	event notification	e-mail / ftp / alarm buffering event notification	e-mail / ftp / alarm buffering event notification
<b>Dynamic IP</b>	DDNS/uPnP support	DDNS/uPnP support	DDNS/uPnP support
<b>Motion</b>	motion recording	HW Detection/Recording	HW Detection/Recording
<b>Security</b>	multilevel password channel-wise privilege	multilevel password channel-wise privilege	multilevel password channel-wise privilege
<b>Certification</b>	MIC/FCC/CE, RoHS	MIC/FCC/CE, RoHS,IP66	MIC/FCC/CE, RoHS,IP66
<b>Working Condition</b>	0℃ ~ +50℃ / 20% ~ 80% RH	0℃ ~ +50℃ / 20% ~ 80% RH	0℃ ~ +50℃ / 20% ~ 80% RH
<b>Power Supply</b>	SMPS DC 12V/5A	SMPS DC 12V/5A	SMPS DC 12V/5A
<b>Size/Weight</b>	140(W)x224(D)x44(H)mm 0.95Kg without HDD,SMPS	280(W)x215(D)x44(H)mm 1.34Kg without HDD,SMPS	280(W)x215(D)x44(H)mm 1.71Kg without HDD,SMPS

\* Above specifications can be changed without prior notice



### FW-Manager

- Real-time live-view, recording and playback
- 16~256ch central management software
- Advanced search functions
- Advanced monitoring functions
- 1080fps/1920fps viewing & recording performance
- POS / Serial Data / VA integration



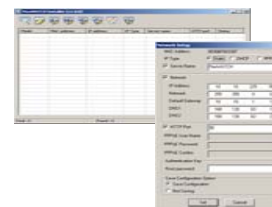
### IPCCTVDNS

- Routing gateway for FlexWATCH® equipment using dynamic IP or private IP
- Web based command and control
- Admin/semi-admin(group)/user wise authentication



### ISENS

- IP Surveillance Enterprise System
- Component based FlexWATCH® Management System
- Components: Scalable and Cascade Architecture
  - CentralDB, Active Alarm, Interactive Map
  - Virtual Matrix, Storage Health Checker, Composer, etc
- More than 1,000 IP channels support



### VSS

- Video streaming server, Video proxy function
- Redistributing and encapsulating all streams of FlexWATCH® Network cameras and video servers
- Web based command and control
- Max. 1024 video streaming support
- Transparent control for PTZ cameras

### IP Install Tool

FlexWATCH Installer for IP setup  
FlexWATCH Installer Lite for End user  
FlexWATCH Installer Pro for Installer

2010-04-07