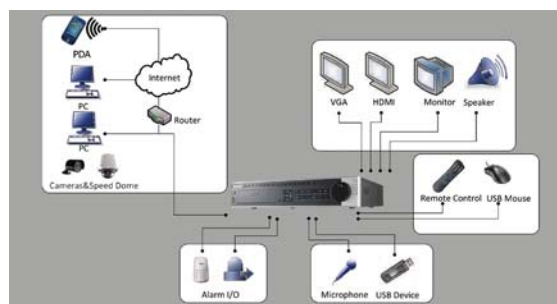


# DS-8104/8108/8116HWI-ST 960H Standalone DVR



## Key features

- H.264 video compression
- WD1 (PAL:960×576, NTSC:960×480) resolution real-time recording
- HDMI and VGA output at up to 1920×1080P resolution
- Dual-stream
- 4/8/16-ch synchronous playback
- HDD quota and group management

## Rear Panel of DS-8116HWI-ST



1. Video in
2. Audio in
3. Video spot out
4. Video out
5. Audio out
6. Line in
7. RS-232 serial interface
8. VGA interface
9. HDMI interface
10. eSATA interface
11. LAN interface
12. Termination switch
13. RS-485 serial interface, keyboard interface, alarm in, alarm out
14. GND
15. 100~240 VAC power input
16. Power switch

## Specifications

	DS-8104HWI-ST	DS-8108HWI-ST	DS-8116HWI-ST
<b>Video / Audio input</b>			
Video compression	H.264		
Analog video input	4-ch, BNC(1.0Vp-p, 75 Ω), PAL/NTSC self-adaptive	8-ch, BNC(1.0Vp-p, 75 Ω), PAL/NTSC self-adaptive	16-ch, BNC(1.0Vp-p, 75 Ω), PAL/NTSC self-adaptive
Audio compression	OggVorbis		
Audio input	4-ch, BNC (2.0 Vp-p, 1 kΩ)	8-ch, BNC (2.0 Vp-p, 1 kΩ)	16-ch, BNC (2.0 Vp-p, 1 kΩ)
Voice talk input	1-ch, BNC (2.0 Vp-p, 1 kΩ)		
<b>Video / Audio output</b>			
HDMI/ VGA output	1-ch, resolution: 1024×768 /60 Hz, 1280×720 /60 Hz, 1280×1024 /60 Hz, 1600×1200 /60 Hz, 1920×1080P /60 Hz		
CVBS output	1-ch, BNC (1.0 Vp-p, 75 Ω), resolution: PAL: 704×576, NTSC: 704×480		
Video spot output	1-ch, BNC (1.0 Vp-p, 75 Ω), resolution: PAL: 704×576, NTSC: 704×480		
Video loop out	Optional		
Encoding resolution	WD1 / 2CIF / CIF / QCIF		
Frame rate	25fps (P) / 30fps (N)		
Video bit rate	32 Kbps ~ 2048 Kbps, or user defined (max. 8192 Kbps)		
Audio output	2-ch, BNC (Linear, 600 Ω)		
Audio bit rate	16 Kbps		
Dual-stream	Support		
Stream type	Video, Video & Audio		
Playback resolution	WD1 / 2CIF / CIF / QCIF		
Synchronous playback	4-ch	8-ch	16-ch
<b>Hard disk</b>			
SATA	Up to 8 SATA interfaces		
eSATA	1 eSATA interface		
Capacity	Up to 4TB capacity for each disk		
<b>External interface</b>			
Network interface	1 ,RJ45 10M / 100M / 1000M self-adaptive ethernet interface		
Serial interface	1 RS-232 interface (for parameters configuration, maintenance, transparent channel);1 RS-485 interface (for PTZ control);1 RS-485 keyboard interface (for special keyboard control)		
USB interface	2 x USB2.0		
Alarm in	4	16	16
Alarm out	2	4	4
<b>General</b>			
Power supply	100~240 VAC, 6.3A, 50~60 Hz		
Consumption	≤ 35W	≤ 40W	≤ 45W
Working temperature	-10 °C ~ +55 °C		
Working humidity	10% ~ 90%		
Chassis	19-inch rack-mounted 2U chassis		
Dimensions (W × D × H)	445 × 470 × 90 mm		
Weight	≤ 8Kg (without hard disk or DVD-R/W)		