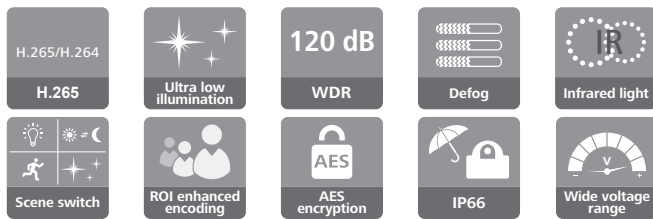


IPC6224-VRZ

2MP Network Bullet Camera

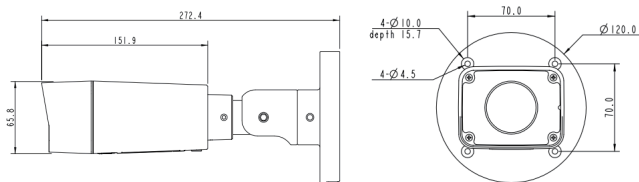


Features

- H.265, H.264 and MJPEG video compression standard
- Built-in motorized zoom and focus lens
- Wide dynamic range up to 120dB
- Max. 30 meters IR coverage
- Intelligent IR control
- IP66 protection class
- Ultra wide operating temperature range:-30 C ~ 60 C
- DC supply can be hot standby for PoE

Dimension

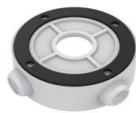
Unit: mm



Optional Accessories



Pole-mount bracket
DTS-11C



Connection box
ACC2501-HW

Specifications

Model Item	IPC6224-VRZ
Camera	
Image sensor	1/2.7" 2.0 megapixel progressive scan CMOS
Effective pixels	1920(H)×1080(V)
Min. Illumination	Color: 0.005lux (F1.4, AGC ON) B/W : 0.003lux (F1.4, AGC ON), 0 lux with IR on
Day/Night mode	Auto/Color/Monochrome (removable infrared-cut filter)
Electronic shutter speed	1/100000s to 1s
Gain control	Automatic / Manual
Wide Dynamic Range	120dB
Backlight compensation	Supported
Defog	Automatic/Manual
White balance	Auto/Auto-track/Manual/OnePush, Scenarios mode: Indoor/ Outdoor/Fixed sodium lamp/Fluorescent lamp/Incandescent lamp
Digital noise reduction	Self-adaptive to 2D or 3D DNR
IR coverage	Max. 30 meters
Lens	
Focal Length	2.8-12mm (4.3x)
Angular Field of View	Horizontal: 96°(Wide) ~ 36°(Tele) Vertical: 51°(Wide) ~ 20°(Tele)
Max. Aperture	F1.4
Auto-Iris	DC-Iris
Function	
Video compression	H.265 / H.264 / MJPEG
Max. Resolution	1920×1080
Frame rate	60Hz:30/20~1fps / 50Hz:25/20~1fps
Video bit rate	32 kbit/s to 8 Mbit/s
Multiple streaming	Dual Full HD(1080p) streams /Treble streams
Media stream set	Four predefined packages(High quality, Balanced, Low bandwidth, and Mobile devices) and four customized packages
ISP packages	Five predefined typical scenarios(Outdoor, Indoor, Motion capture, Low-light, and Backlight mode) and eight user-defined scenarios
PU access protocol	ONVIF Profile S/G,GB/T 28181-2014, Genetec Protocol v1.00 and HUAWEI SDK(private protocol)
Network protocol	TCP, UDP, IPv4, DHCP, DNS, ICMP, IGMP, HTTP, HTTPS, SFTP, RTP, RTSP, RTCP, SIP, ARP, TLS, NTP, SNMP(V1/V2/V3), 802.1x, QoS, DDNS, FTP, SSL, and SSH
Security mode	User name and password authentication, 802.1x, and HTTPS digital certificate
Stream encryption	AES128/192/256 encryption algorithm, and digital watermark
Intelligent analytics	Object behaviors detections including Crossing line, Idle/removed objects, Loitering and Intrusion, Color recognition, Vehicle and pedestrian classification
Intelligent detections	Motion detection and Covering detection
Event triggers	Motion detection, covering detection, alarm input, intelligent analytics alarm and network disconnection
Event actions	Alarm output, SD card recording, pre-recording and snapshot
Interface	
Ethernet interface	1x RJ45 10/100 Base-T self-adaptive Ethernet port
Memory card slot	1x Micro SD/SDHC/SDXC slot, up to 64 GB
General Parameter	
Power supply	DC12V ± 25%, PoE(IEEE 802.3at) DC supply can be hot standby for PoE
Power consumption	Typ. 3.7W, Max 11.6W
Operating temperature	-30° to +60° C
Operating humidity	5% to 95% (non-condensing)
Lightning surge suppression	6kV, complies with IEC 61000-4-5
Anti-corrosion	Satisfies the ISO9223 Class C4 environment, complies with IEC60068-2-11
IP protection class	IP66, complies with IEC 60529
Weight	Net weight: 1350 g; gross weight: 2000 g
Dimensions	Physical dimensions: 272.4×84.1×66.0 mm Packing dimensions: 400.0×200.0×136.00 mm