

N-Series Superior Night Vision 3 Megapixel Vandal Dome Network Camera

VD-300Np V5-SE

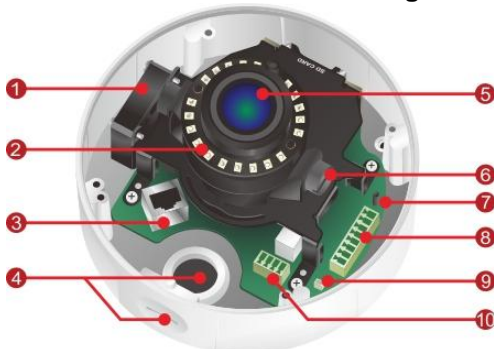
Enhancement HDTV 1080p/720p • 3M/2M Resolution Supported



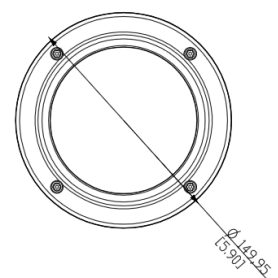
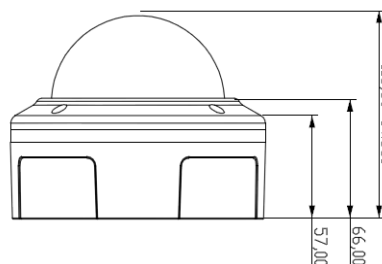
- Enhancement N-Series Sony Exmor 3M Indoor / Outdoor Dome Camera
- **SmartFocus**® to Ease the Zoom and Focus Adjustment Remotely
- Support HDTV Video Quality (Full HD 1080p @ 30fps Streaming)
- Brickcom **WDR Enhancement**® technology inside up to 120dB
- MPEG-4, MJPEG and H.264 Triple Codec Compression
- **Intelligent Multi-Profile Sensor Management**® for Different Environments
- Tamper alarm (Focus Loss, Blockage, Spray Painting) (Optional with extra license required)
- Removable IR-cut Filter /Auto Light Sensor for Day and Night
- 1 DI/DO for External Alarm and Sensor Device
- TV-out supported
- Two-way Audio/Built-in Micro SD/SDHC Memory Card Slot for Local Storage
- IK10 Vandal Proof / IP67 Weather Proof Outdoor Enclosure
- Power over Ethernet/DC12V/AC 24V support
- Smart IR to adjust the IR LED light across the entire area to get a well illuminated image



Photo Indication & Dimension Diagram



- | | |
|--|--|
| 1 Fan | 8 Terminal Block
(For Audio in/out, DIDO) |
| 2 LEDs | 9 TV Out Connector |
| 3 RJ45 Connector
(For Ethernet and 802.3 at PoE Plus) | 10 Terminal Block
(For DC12V/AC24V) |
| 4 Conduit Plug and Hole | 11 SD Card Slot |
| 5 LENS | |
| 6 Tilt Screw | |



Camera

Models	3M, Motorized Lens, Smart Focus
Hardware System	CPU: 533 MHz Flash: 32M RAM: 256M DDR
Image Sensor	Sensor Type : 1/2.8" Sony Exmor™ CMOS Sensor Resolution : 2048 x 1536 pixel Sensor Type : Progressive
Minimum Illumination	B/W: 0 Lux (IR ON) B/W: 0.001 Lux(F1.2,1/30 Sec., 50IRE) Color: 0.01 Lux(F1.2,1/30 Sec., 50IRE)
IR Illuminators	VD-300Np V5-SE Built -in IR Illuminators, effective up to 30 meters IR LED: 22pcs IR wavelength: 850nm
Lens	VD-300Np V5-SE Iris Type: Auto Iris, DC Drive Lens Type: Auto Focus Motor Zoom Lens Focal Length: 3mm(W)~10.5mm F value: F1.2 View Angle: (H): 90°~30°/(V): 49°~17°/ (D):103°~34°
Day & Night ICR	Triggered by Light sensor, Scheduling, Digital Input
Local Storage	Built-in SD/SDHC/SDXC Max.64G Memory Card Slot

Video

Compression Streaming	H.264 / MPEG4 / MJPEG Simultaneous multiple streams
Video Setting	Multi-Profile Image Management: Day/ Night/ Sunset/ User 1/ User 2 Auto Exposure Control/AGC/AWB Control Manual Shutter Speed: 1/10000~1/5s Manual Gain Control: 1X ~ 15X DNR (2D+3D),BLC, 120dB WDR, Flip/Mirror
S/N Ratio	>50 dB
Image Resolution	3M: 2048x1536 @ 20fps 2M (Full HD): 1920x1080 @ 30fps 1M : 1280x720 @ 30fps

Events and Alarm Management

Events	Motion Detection(4 zones)/Privacy Mask(4 zones) Schedule/ Audio Detection/ Digital Input/ Painting), Temperature Alarm/ Auto Focus Shift for Day & Night
Alarm I/O	Input 1ea / Output 1ea
Alarm	Stream/Snapshot to FTP/Email/Samba/SD-Card HTTP/Email Notification/ Digital Output

Audio

Audio Streaming	2-way Audio Support
Audio Compression	G.711, AMR (8 kHz, Mono, PCM)
Audio Input/ Output	Line input (Unbalanced, 1.4 Vp-p, 1 Vrms) Line out : (3.5mm stereo mini jack)

General

Communication	Ethernet : 1x10/100Mbps RJ-45 Supported Protocols : IPv4/6, TCP/IP, UDP/IP, HTTP, HTTPS, RTP(UDP), RTP(TCP), RTSP,DHCP,ICMP,IGMP, SSL, FTP,SMTp,NTP,ARP,DDNS,PPPOE,RTCP,DNS, CIFS/SMB,Bonjour, UPnP, DynDNS, SOCKS, IEEE 802.1x (SSH,SNMP v1,v2c,v3 LDAP)*
Onvif Support	Profile-S
Power Input/ Operating Temperature	VD-300Np V5-SE 802.3 af POE/ DC12V 1A /AC 24V: -40°C ~ 60°C (-40°F ~140°F) (Build in fan and heater)
Max. Power Consumption	DC12V 1.5A/AC 24V VD-300Np V5-SE: 12.5 Watts 802.3 af POE VD-300Np V5-SE: 15 Watts 802.3at PoE Plus VD-300Np V5-SE: 27.5 Watts
Environment	Weather Proof: IP67 Operating Humidity : 5% ~ 90%
Max. User Access	20 users(depends on settings and available bandwidth)
Supported Languages	English, French, German, Spanish, Italian, Chinese, Korean, Russian, Japanese, Swedish,Danish, Portuguese, Turkish, Polish, Czech, Rumanian, Serbian, Dutch, Croatian, Hungarian, Greek
Dimension	113.75 (D) mm X 144.25(H) mm
Weight	860g/1.90lb
Housing	Weather-proof (IP67) Vandal-proof (IK10)
Certification	FCC, CE, UL,IK10 RoHS
Viewing System Requirements	OS: Microsoft Windows 7/Vista/XP/2000 Browser: Mozilla Firefox, Internet Explorer 6/7 or above, Safari, Google Chrome Mobile : IOS, Android, Windows Mobile Cell Phone: 3GPP player Real Player: 10.5 or above Quick Time: 6.6 or above
Warranty	Limited 2-year warranty (*): Licence Base specifications