

2 Megapixel Day & Night Vandal Dome Network Camera

VD-201Af

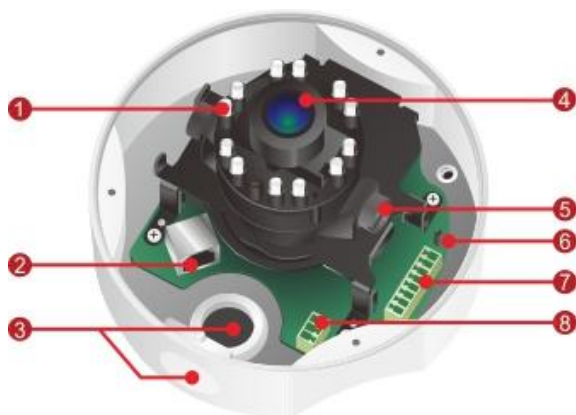
HDTV 1080p/720p • Cost Effective



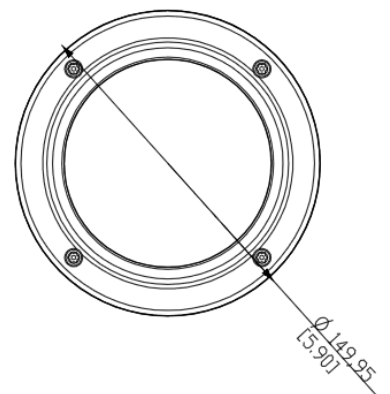
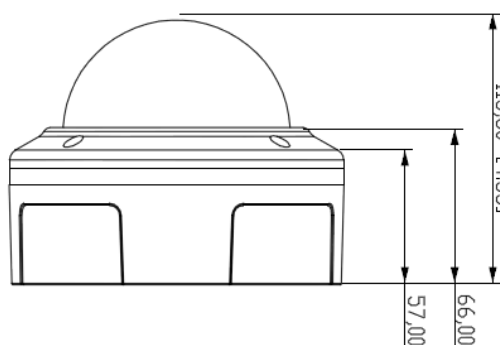
- Megapixel High Resolution Outdoor Vandal Dome Camera
- HDTV Quality (Full HD 1080p @ 25fps Streaming)
- Cost Effective/ Full Features Camera
- Easy Installation Dome Type Camera, Suitable for Project
- Build In IR Leds, effective up to 10 m
- MPEG-4, MJPEG and H.264 Triple Codec Compression
- **Intelligent Multi-Profile Sensor Management®** for Different Environments
- Removable IR-cut Filter / Auto Light Sensor for Day and Night
- 1 DI/DO for External Alarm and Sensor Device
- Two-way Audio
- IK10 Vandal Proof and IP66 Weather Proof Outdoor Enclosure
- Power over Ethernet / DC 12V Power Input



Photo Indication & Dimension Diagram



- | | |
|--|---|
| ① LEDs | ⑤ Tilt Screw |
| ② RJ45 Connector
(For Ethernet and PoE) | ⑥ Reset Button |
| ③ Conduit Plug and Hole | ⑦ Terminal Block (for Audio in/out, DIDO) |
| ④ Fixed Lens | ⑧ Terminal Block (for Power DC12V, 1A) |



Camera

Hardware System	CPU: 533 MHz Flash: 32M RAM: 256M DDR
Image Sensor	Sensor Type : 1/2.5" CMOS Sensor Sensor Resolution : 1920 x 1080 pixel
Minimum Illumination	0 lux (IR ON, B/W) 0.1 lux (IR OFF, B/W) 0.2 lux (F1.6, Color) S/N ratio: 38.1dB
IR Illuminators	Built -in IR Illuminators, effective up to 10 meters IR LED: 12pcs IR wavelength: 850nm
Lens	Lens Type: Board Lens Focal Length: f= 4mm F No.: 1.6 View Angle: (H): 62°/ (V): 34°/ (D): 71°
Day & Night ICR	Triggered by Light sensor, Scheduling, Digital Input

Video

Compression Streaming	H.264 / MPEG4 / MJPEG Simultaneous multiple streams
Video Setting	Multi-Profile Image Management: Day/ Night/ Sunset/ User 1/ User 2 Auto Exposure Control Manual Exposure Control: 1/20000~1/5s Manual Gain Control: 1X ~ 32X Manual White Balance Control: 2000K~7000K
Image Resolution	2M (Full HD): 1920x1080 @ 25fps 1M (HDTV): 1280x720 @ 25fps

Events and Alarm Management

Events	Motion Detection/ Schedule/ Audio Detection/ Digital Input
Alarm	Stream/Snapshot to FTP/Email/ Samba/SD-Card/HTTP/Email Notification/ Digital Output

Work Best With

Camera Accessories Options



L-WM-01
Camera Bracket



POE16U
High Power PoE Injector

Audio

Audio Streaming	2-way Audio Support
Audio Compression	G.711, AMR (8 kHz, Mono, PCM)
Audio Input/ Output	Line In/ Out

General

Communication	Ethernet : one 10/100Mbps RJ-45 Supported Protocols : TCP/IP, UDP, ICMP, DHCP, NTP, DNS, DDNS, SMTP, FTP, HTTP, Samba, PPPoE, UPnP, RTP, RTSP, RTCP, IPv6
Power Input/ Operating Temperature	PoE 802.3 af/ DC12V 1A : -20°C ~ 50°C (-4°F ~122°F)
Max. Power Consumption	PoE 802.3 af: 8 watts DC 12V 1A: 6 watts
Environment	Water Proof: IP66 Operating Humidity : 10% ~ 80%
Dimension	113.75 (D) mm X 144.25(H) mm
Weight	900g/ 1.99 lb
Housing	Weather-proof (IP66) Vandal-proof (IK10)
Certification	FCC, CE, IK10
Viewing System Requirements	OS: Microsoft Windows 7/Vista/XP/2000 Browser: Mozilla Firefox, Internet Explorer 7/8 or above, Safari, Google Chrome Cell Phone: 3GPP player Real Player: 10.5 or above Quick Time: 6.6 or above VLC
Warranty	Limited one-year warranty

Network Equipment Options



PS-588I
8-port 10/100M PoE Fast Ethernet Switch