



SVD-216 Quick Installation Guide

Version 1.0.1



Q101/EN/11182010/001

Table of Contents

Purpose	3
Package Contents	3
Product Description	4
Installation Diagram	5
System Overview	6
Setting Up The Device	7
Network Setup	7
NVR Setup	11
Live View and Basic Operations	25
Upgrade Firmware	29

Purpose

This document provides information for installing SEEnergy SVD-216 Network Media Decoder on your network. The information included in this document should be sufficient for users to quickly setup the device and start the live video monitoring. Users should also be able to perform basic troubleshooting with information provided in this document. For all other aspects of using this product, please consult the user's manual available on the CD or it can be downloaded at our corporation website.

Package Contents

- SVD-216 Network Media Decoder
- Power adapter/cord
- Printed Quick Installation Guide
- Printed Warranty Card
- Product CD

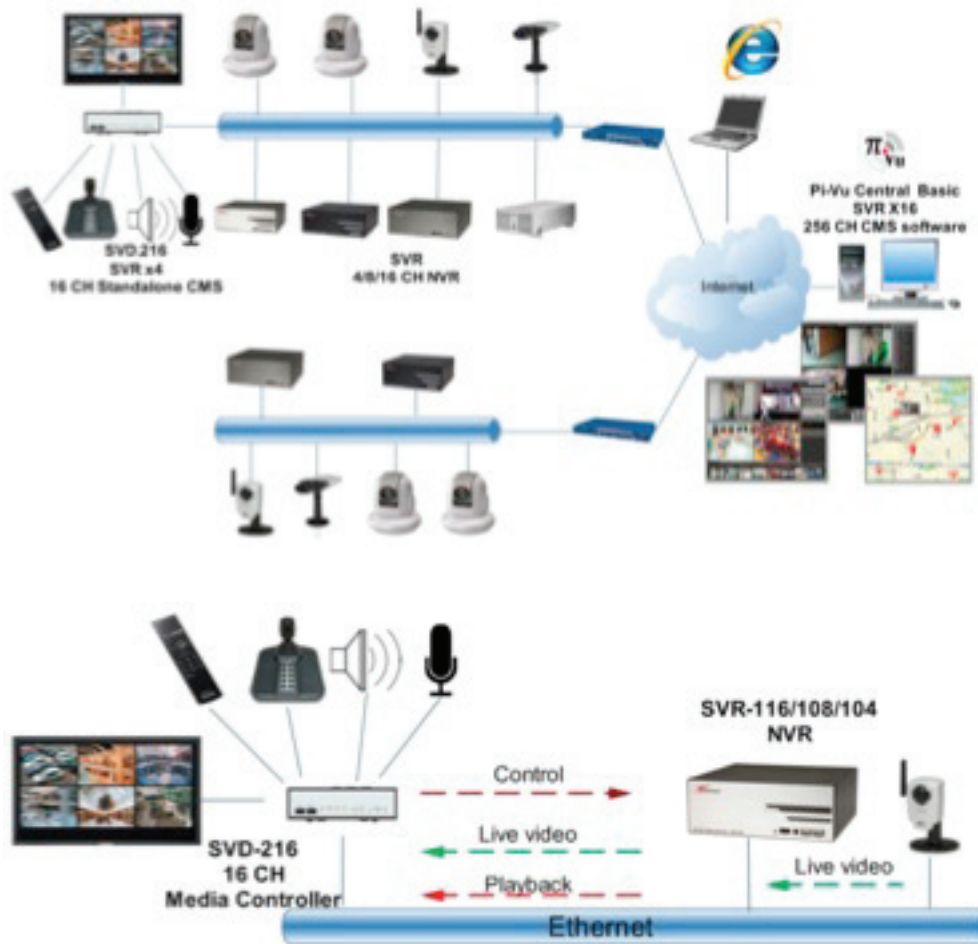
Product Description

The SEEnergy SVD-216 is designed for use with SEEnergy's embedded NVRs that provides both central management and local display functionalities. The high quality network media player acts as a network video decoder which is equipped with a DVI interface that can outputs 4 real-time videos from the NVRs up to D1 resolution or 1 real-time video in full HD (1920 x 1080) resolution. The media player provides maximum of 9 live video view and 1 channel video playback. The built-in USB ports can be used to connect a USB hard disk for backup purpose. Simply connect the device to an external monitor and all operations can be done with an IR remote control on a friendly user interface. The device is built with high performance decoding processor and provide superior reliability with an embedded OS.

Feature Highlights

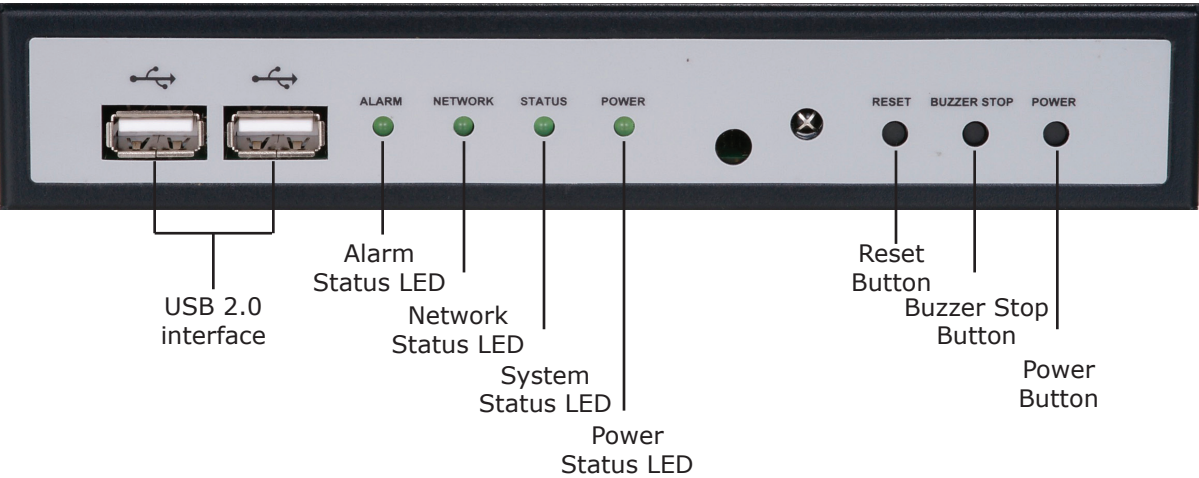
- Manage up to 4 SEEnergy NVRs
- Up 9 Live Video Display
- HD Resolution Decode and Display
- Easy Firmware Upgrade Through USB
- Support Backup to USB Disks
- Export Playback Videos to AVI
- Easy Operation with Remote Control
- Two-way Audio
- Support H.264
- SEEnergy Smart NVR Search

Installation Diagram

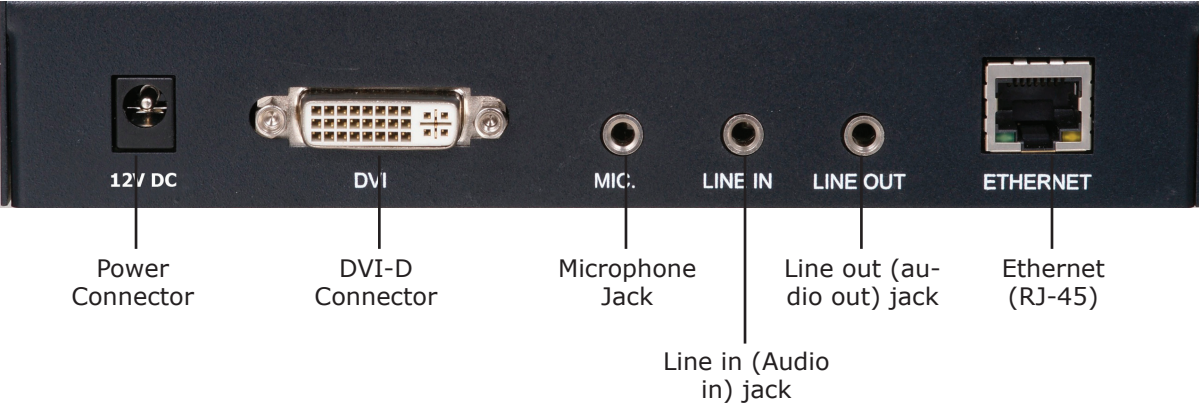


System Overview

Front



Rear



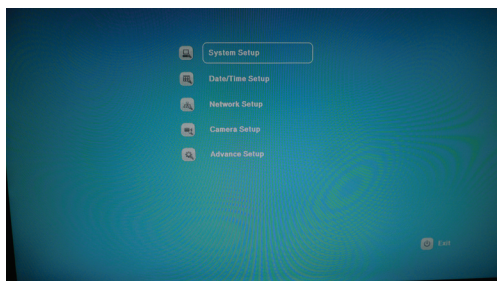
Setting up the device

Network Setup

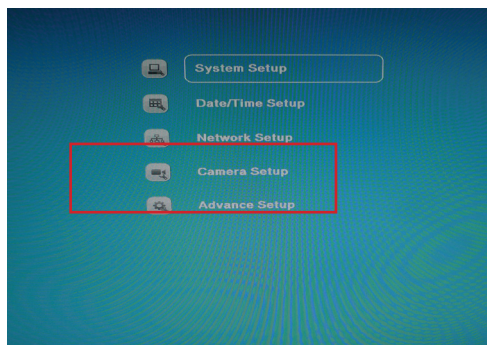
The device can be configured to use a static IP address or a dynamic IP address that is assigned by a DHCP server.

To configure its IP address, follow the steps illustrated below:

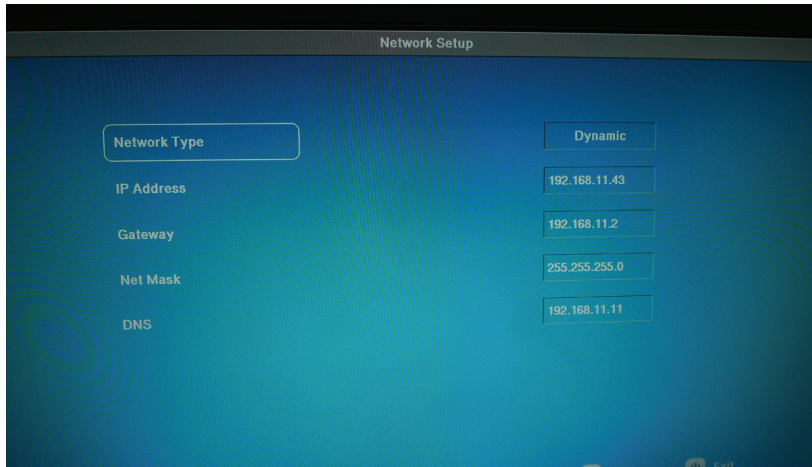
1. Click the "Setup" button on the remote to enter the configuration screen:



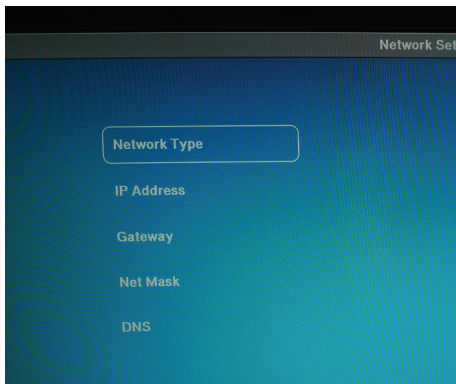
2. Use the directional buttons to move up and down on the screen and make selections between different menu options. Select "Network" and press the "Enter" button on the remote control:



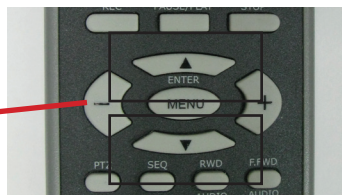
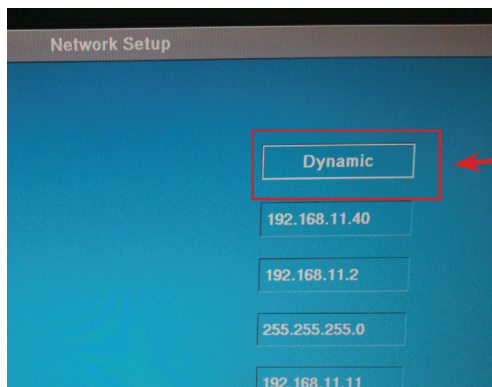
3. By default, the device is set to use dynamic IP, which if a DHCP server does exist in the local network, the device's IP information should be displayed like what is shown below:



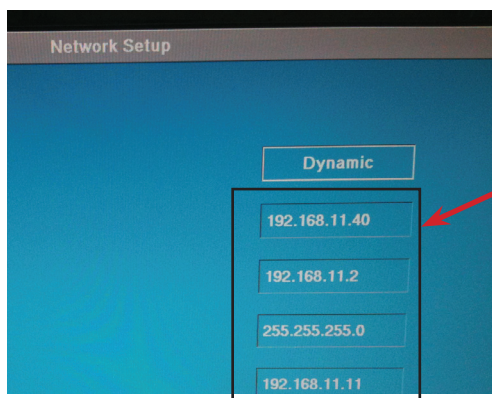
4. Press the "up" and "down" keys on the remote to move between the options on the left. To configure the device to use static IP, make sure the "Network Type" option is highlighted (selected) and press the "enter" button to enter the edit mode:



5. Press the “up” and “down” keys to select between “Static” or “Dynamic”. Once finished, press the “Enter” key to confirm the new configuration and leave the edit mode.

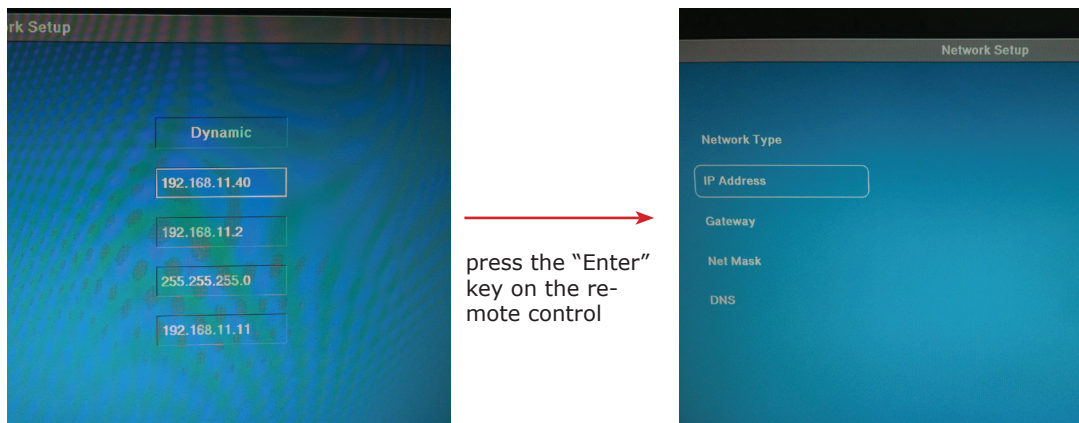


6. Follow the step described in point 4 to move to other fields for configuration. Use the number keys to enter digits for IP address.



** For entering a number in any octet that is less than 3 digits, press the “Enter” key to place the “.” and move to the next octet.*

7. Once a proper IP address has been entered, click the "Enter" key to confirm the setting and leave the edit mode



** To make correction on the IP address while you are still in edit mode, click the "left" key to delete one digit at a time.*

One you leave the edit mode, you'd need to key in the complete IP address again in order to make a correction

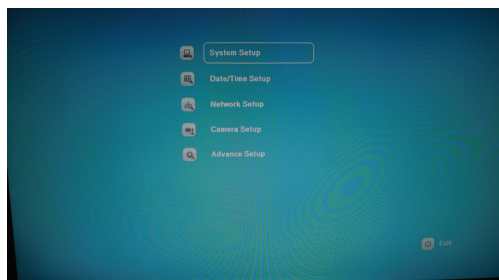


NVR Setup

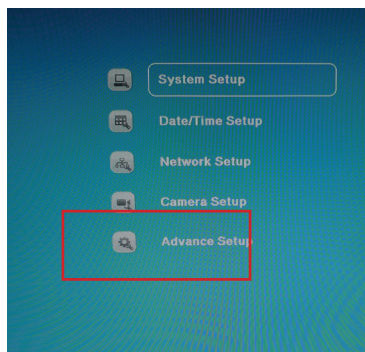
The device is capable of receiving 16 channels of live video streaming from 4 different NVRs. As the device is a central management unit for NVRs, the process of adding channels would be to find available NVRs on the network first and choose the desired channels from particular NVRs then add them to the device for management.

To add channels to the device, following the steps illustrated below:

1. Press the "Setup" button on the remote control to enter the setup menu:



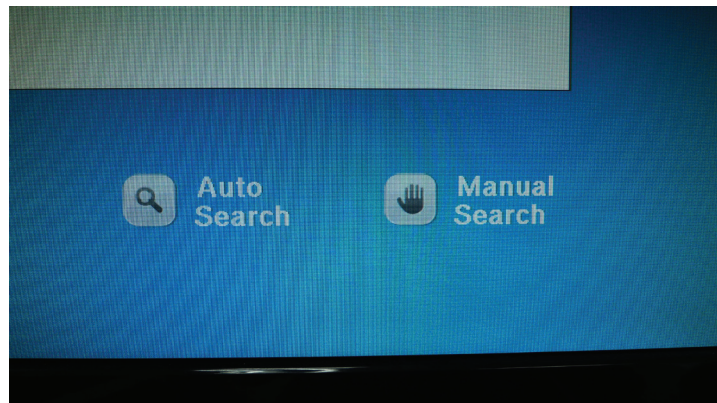
2. Select "Camera Setup" from the main menu:



3. Select "NVR Management":



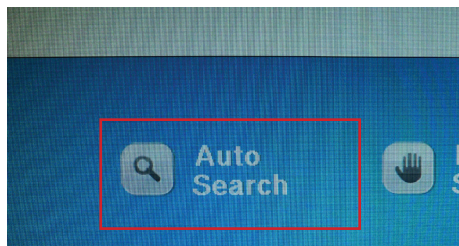
4. There are two ways of adding NVRs to the device, auto search and add manually:



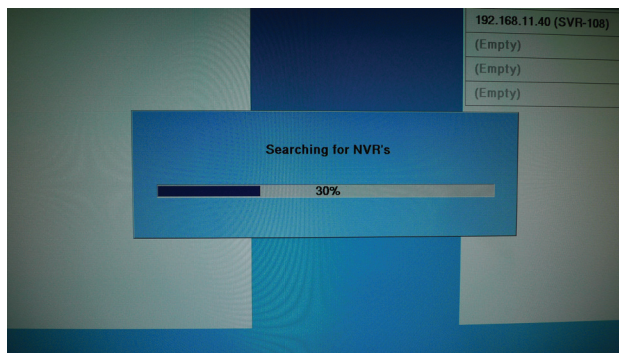
** Auto search only works when the device and the NVR are located in the same subnet*

Add NVRs with Auto Search

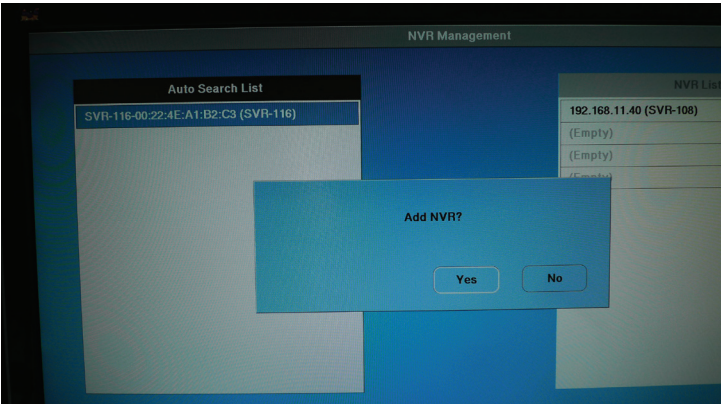
1. To add a NVR with auto search, press the key shown below twice to select "Auto Search":



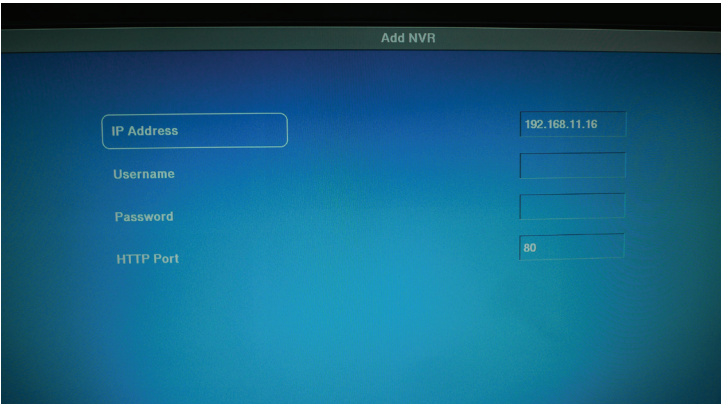
2. Press "Enter" to start the searching process:



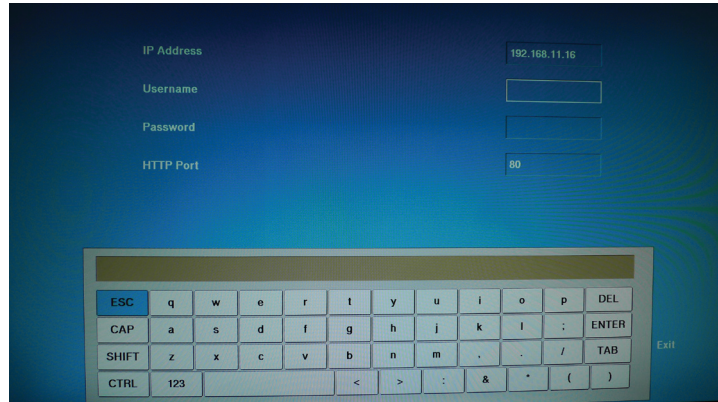
3. Once the device finds NVRs on the network, they will be listed in the "Auto Search List". Simply press the up and down keys to select among listed NVRs and press the "Enter" key to add one:



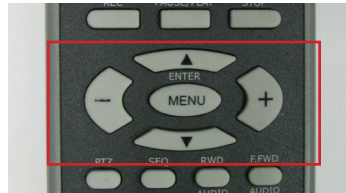
4. Click "Yes" to go to the next setup screen which you should be prompted to enter the NVR's user-name and password:



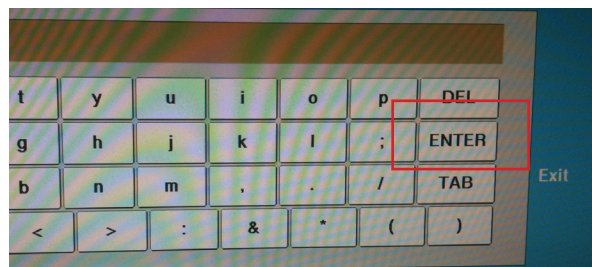
5. Press the down key on the remote control to select the username field and press "Enter" to enter the edit mode. Once you are in edit mode, a virtual keyboard should be displayed:



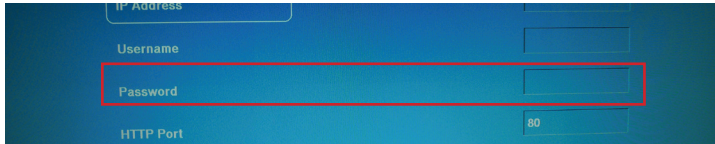
6. Use the directional keypad on the remote control to move between the virtual keyboard buttons and press the "Enter" button to make a selection:



7. Select the "Enter" button on the virtual keyboard to finish entering.

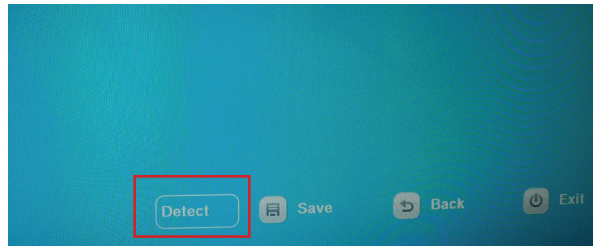


8. Follow the same steps to enter the password.

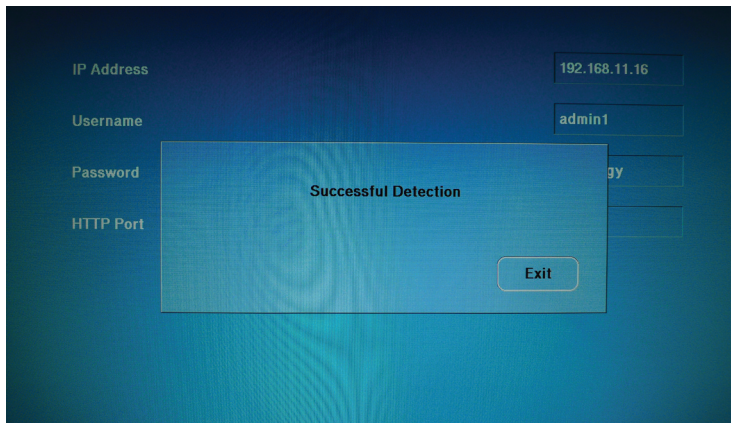


A screenshot of a web-based login interface. It features four input fields: 'IP Address', 'Username', 'Password', and 'HTTP Port'. The 'Password' field is highlighted with a red rectangular border. The 'HTTP Port' field has the value '80' pre-filled.

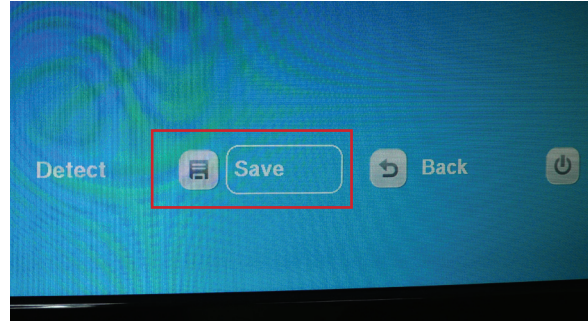
9. When done, click the button highlighted below once to select the "Detect" option and press the "Enter" key to start the detection:



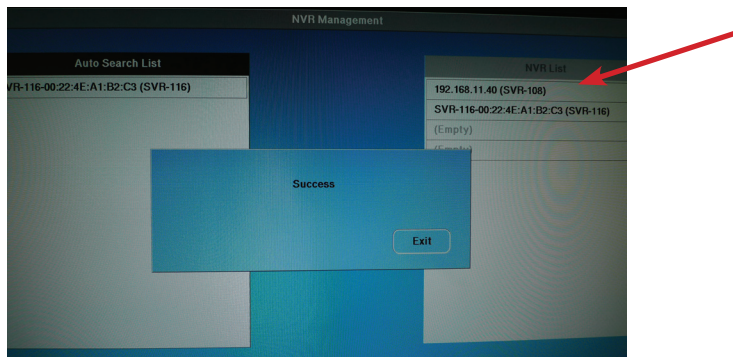
10. Upon successful detection, the following message should be displayed. Simply press the "Enter" key on the remote to confirm and exit out the message window:



11. Finally, press the button shown below on the remote control to select the "Save" option on the screen to save the configuration:

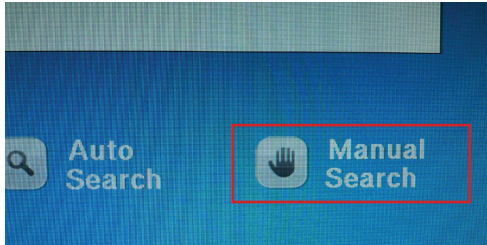


12. The "Success" message should then be displayed to confirm the configuration has been saved. The NVR that's being added should be listed in the "NVR List" on the right.

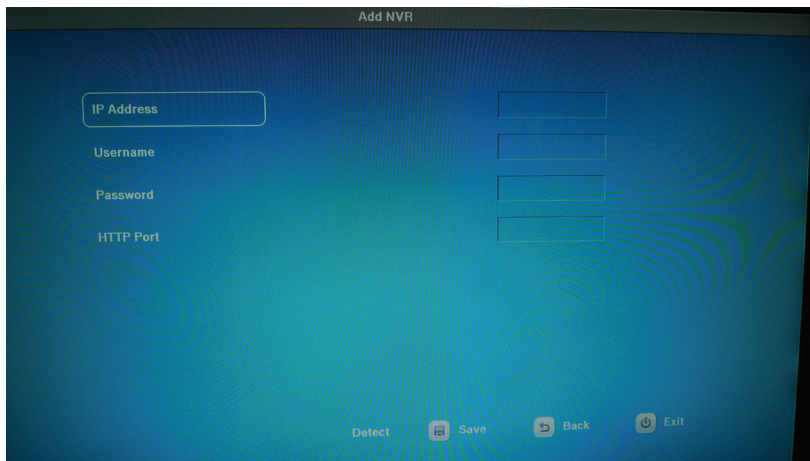


Add NVRs with Manual Search

1. To manually add NVRs to the device, follow the steps described in page 13, but instead of choosing "Auto Search", choose "Manual Search" to begin the process



2. You should be directed to the setup page similar to the Auto Search setup page, but all fields in this page require users to enter manually.

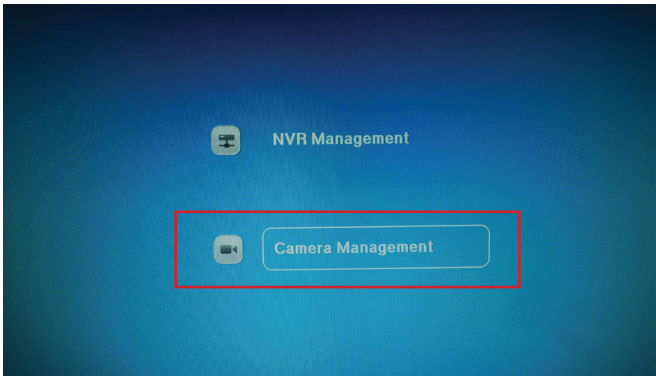


3. Follow the steps described from page 15 to 17 and use the virtual keyboard to enter all fields in this page.

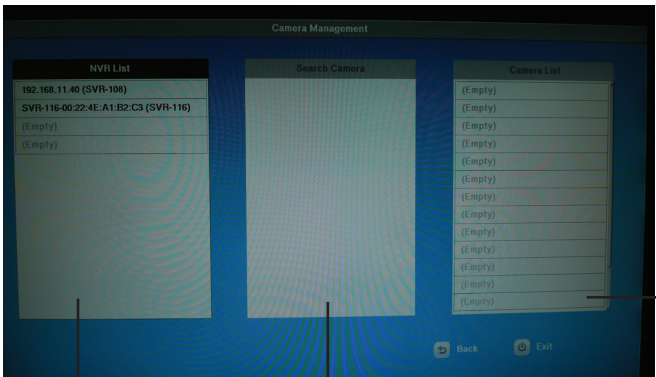
Camera Setup

After NVRs have been added to the device, the next step would be to add cameras for live viewing. To add cameras, follow the steps described below.

1. Go to "Camera Management" under the "Camera Setup" menu:



2. The following setup page should display:

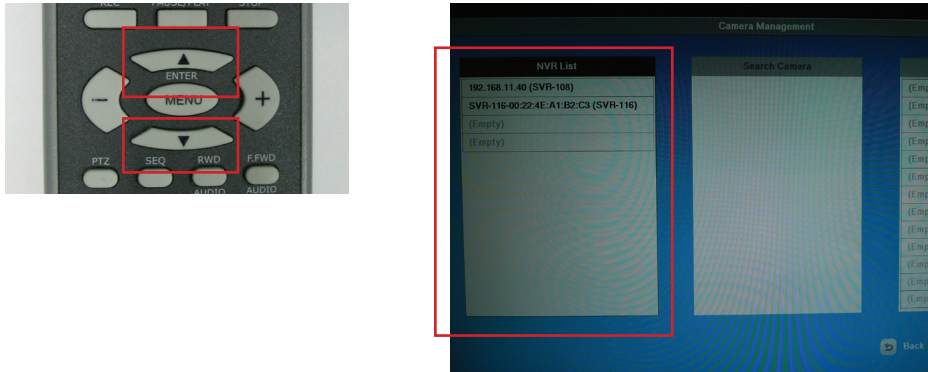


List of NVRs that were previously added

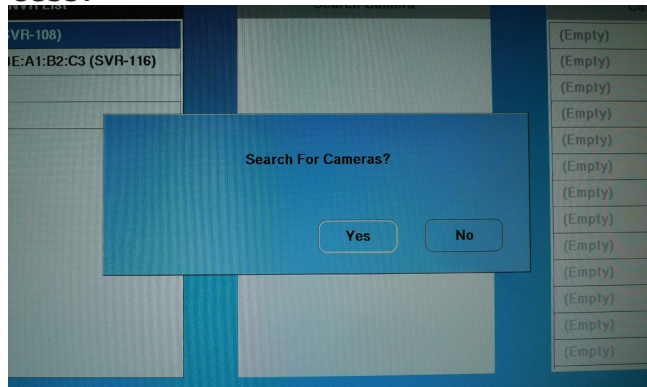
Cameras available from the NVR selected in the list on the left

Cameras that are added to the device

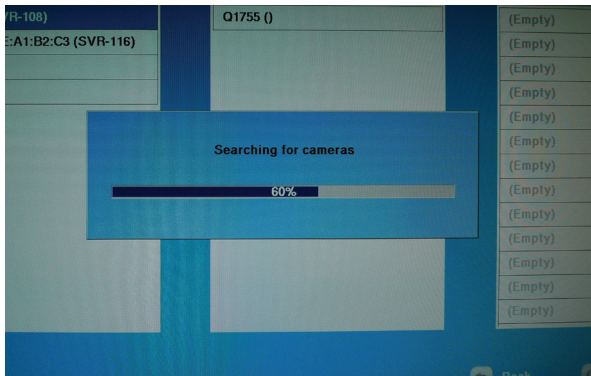
3. Use the “Up” and “Down” keys on the remote to select a NVR from the “NVR List” on the left:



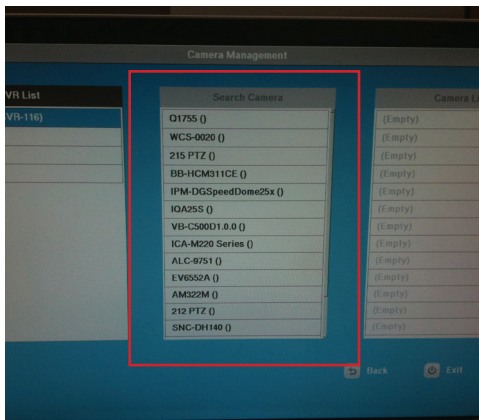
4. Press the “Enter” key to confirm the NVR selection and the following message should display. Press the “Enter” key again to confirm the process:



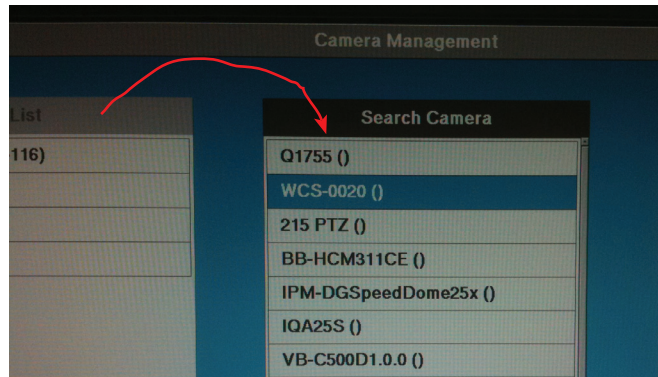
5. The screen below should display to indicate the status of the search process:



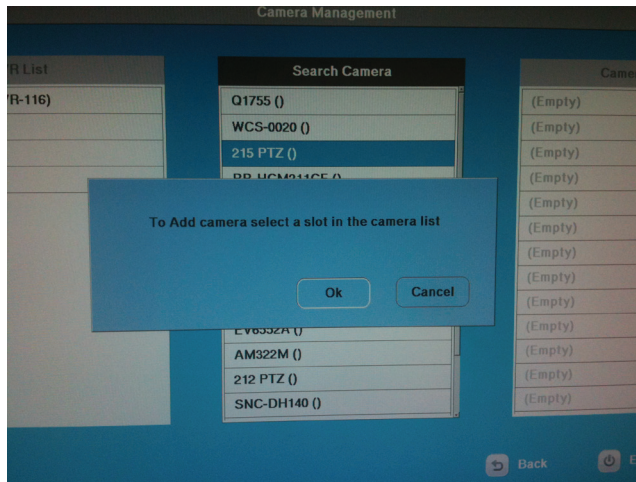
6. Available cameras from the selected NVR will be listed in the "Search Camera" list like shown below:



7. Press the "right" key from the directional keypad on the remote control to move from "NVR List" to "Search Camera" list.
Use the "up" and "down" keys to select one of the cameras from the "Search Camera" list

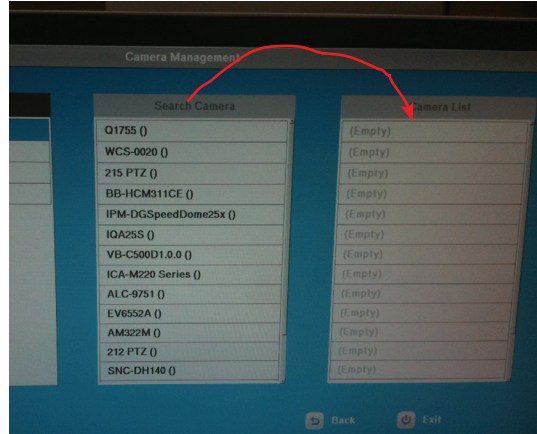
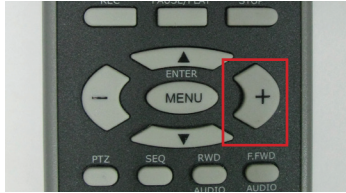


8. Press the "Enter" key to confirm the camera selection and the following message should display:



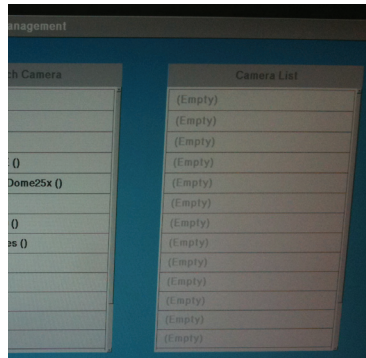
** This message is indicating users that the camera has been selected. Select an empty slot from the "Camera list" on the right to determine the channel number for the selected camera.*

9. Press the "right" key on the remote control to select the "Camera List":



10. Use the "up" and "down" keys to select an empty slot in the "Camera List". The slots represent the channel numbers which will be used for the cameras. Slots from the top down represent channel 1 ~ 16 respectively.

Press "Enter" to confirm the selection.



Channel 1

Channel 2

.

.

.

.

.

.

Channel 16

** To delete a camera, simply select one and press the "Enter" key.*

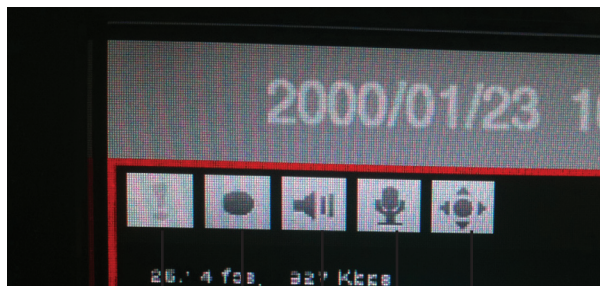
Press it again to confirm the action.

Live View and Basic Operations

After the cameras have been successfully added to the device, press the "LIVE" button on the remote control to switch to live view screen. By default, the live view displays in the 3x3 layout



Noticing there are icons on top of each video window, they represent the availability on particular functions and status for each channel (camera). Details are illustrated below:



Event Status

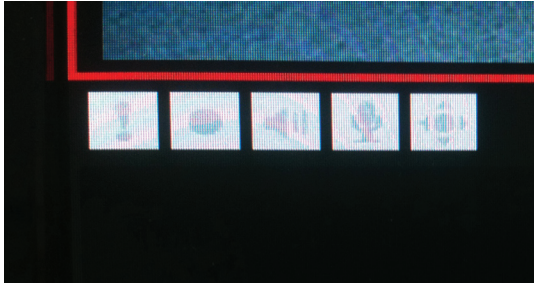
Recording
Status

Audio Function

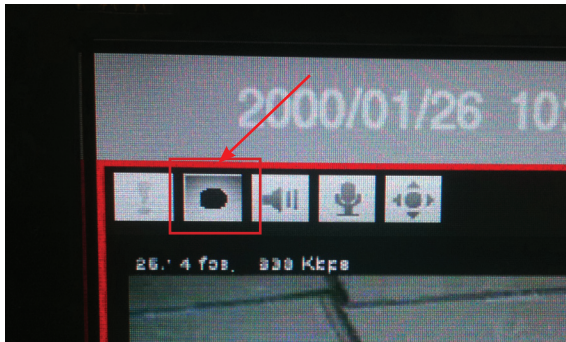
Audio Post
Function

PTZ Function

The icons will be grayed out for the functions that are not available.

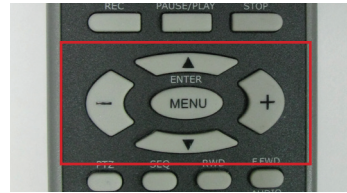


Press the "REC" button to manually trigger the recording function. The recording status icon will show in an indent-like effect on the screen.



Each channel dependent functions such as PTZ, recording, or audio can only be executed one channel at a time.

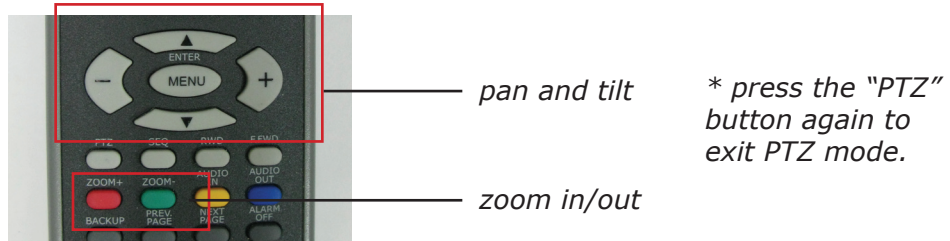
To enable/disable particular functions, select a channel by using the directional keypad first and press the function button accordingly. Selected channel will be highlighted with frame in red (see below)



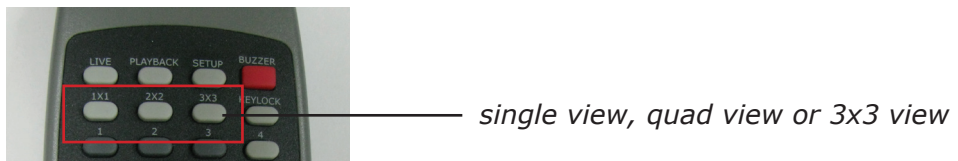
Notice that the frame will show in blue if the PTZ function is enabled on the selected channel.



Once the PTZ function is enabled, use the directional keypad for pan and tilt movements. Press the “Zoom+” and Zoom-” buttons to zoom in and out.



The video display layout can be changed by using the buttons illustrated below:



Use the “Prev. page” and “Next Page” buttons to view channels in next page in single, quad or 3x3 view mode:

