

2.0M HD IP FLAT PTD CAMERA

PXN-B402N
PXN-B402P



AUTO FOCUS

1080P



FEATURES

Real-time High Definition Dome Camera

Using the state of art video compression engine, real time HD video streams of 1080p can be delivered for recording and monitoring.

Triple codec, Simultaneous Multi Streaming

Triple H/W codec enables to transmit max 3 independent streams with different settings for different requirements. Therefore, it is possible to combine seamless remote video monitoring using H.264 with simultaneous transmission of high quality MPEG-4 to Network Video Recorder. Also, additional MJPEG can be delivered for Mobile devices such as Smart Phone or PDA.

Local SD Card Backup

Some important sequence of still images can be stored in the SDHC memory card. This action can be configured to work with pre-post- alarm event or a given interval.

POE

Built-in Power over Ethernet (IEEE 802.3af) makes installation easier, cheaper and more secure since Power over Ethernet can take advantage of UPS (uninterrupted power supply), which provides back-up power in case of a power failure.

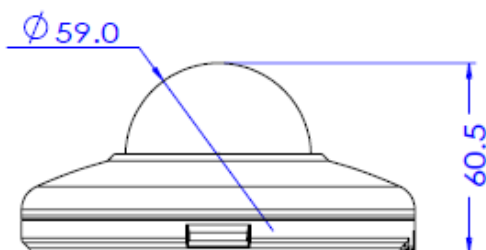
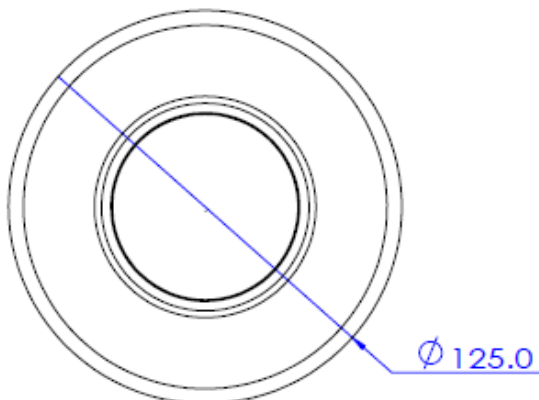
Vandal Proof Design

All housing is designed to withstand rugged environments. Aluminum die -casting enclosure and Poly Carbonate clear dome enables stable 24hours security tasks.

Weather Proof Design

Due to IP66 environment protection as well as built-in Fan & Heater, speed dome camera will serve you all the time regardless of rain, snow and storm.

● DIMENSION



Specification

CAMERA	
Image Device	1/2.8" 2.0M CMOS
Image size	1920(H)X1080(V)
Effective Pixels	Approx. 2 Mega pixels
Aspect Ratio	HD: 16:9
Zoom	12x Digital Zoom
Focal Length	4.0mm, F1.8
Horizontal angle	86°
MIN. Illuminance	Color: 0.1 Lux @ 30IRE, F1.6 B/W: 0.01 lux @ 30IRE, F1.6
DNR	OFF/LOW/MIDDLE/HIGH
Shutter Speed	Auto, Manual(1/25.1/30 ~ 1/60,000)
AGC	Auto / MANUAL / MAX Gain Limit(21 steps)
White Balance	Auto/preset/Manual
WDR	OFF/WDR/BLC

PAN / TILT	
Range	Pan : 350°
	Tilt : 90°
Pan/Tilt Speed	Preset : 120°/ sec
	Manual : MAX 120°/sec
Preset	1024 Presets with Labels
Pattern	128 Patterns
Scan	128 Scans
Group	128 Groups (MAX. 20 Entries for Each Group)

GENERAL	
Sensor In/Out	1 Input/ 1 Output
Power	DC 12V 10W PoE IEEE 802.3af
Approvals	FCC, CE, IP66, ROHS
Housing	Vandal Proof Structure
Material	Body: Aluminum Die-casting Clear Bubble: Polycarbonate
Dimension	Net (ØxH): 125 x 60.5
Weight	
Operating Temp.	-10°C ~ 50°C

NETWORK		
OS	Embedded Linux	
Video Compression	Triple Codec,H.264/MPEG4/MJPEG	
Video Streaming	Multi Streaming CBR/VBR (Controllable frame rate and Bandwidth)	
Resolution	All Codec : 1080P/720P/D1/CIF MJPEG : QCIF	
Frame Rate	Max. 30 /25 fps	
Local Storage	SDHC memory card (card is not included)	
Motion detection	Notification: FTP, e-mail, Alarm out, JPEG Recording on SD	
Alarm	Pre-Post Alarm	
Max No. of Clients	5	
Protocols Support	IPv4	ONVIF, TCP/IP, UDP/IP, RTP(UDP), RTSP, NTP, HTTP,HTTPS, SSL, DNS, DDNS, DHCP, FTP, SMTP, ICMP, SNMPv1/v2c/v3(MIB-2)
	IPv6	TCP/IP, HTTP, HTTPS, DHCP
	DDNS	Propriety: NET4C Public DDNS services Suport: www.dyndns.com , www.no-ip.com
	Security	HTTPS(SSL), Digest Authentication(ID/PW)
OS Supported	Windows 7, Vista, XP, 2000	