

G3210P

8-Port Gigabit Managed PoE Switch with 2-Port SFP

G3210P

8-Port Gigabit Managed PoE Switch with 2-Port SFP

Products Description

G3210P, IP-COM managed PoE Switch developed independently for requirement of building high-performance Gigabit Ethernet network. With 8 10/100/1000 Base-T Ethernet ports and 2 extra independent 1000Base-X Gigabit SFP ports, various ports allow users networking more flexible. RJ45 ports 1-8 support IEEE 802.3af PoE (15.4W) or 802.3at PoE+ (30W) standard. In addition to these, it provides stronger safety protection system, improved QoS policy, multiple VLAN features and higher availability of maintenance. For enhance safe feature, all of this series product support IP-MAC-Port-VLAN binding, IP/MAC/ARP filtering, can filter related data which assist to build reliable and high-performance network to meet the requirement of Gigabit wireless cabling and HD monitor network for large and medium enterprise, star hotel and large shopping mall.



Key Feature

- 8 10/100/1000 Base-T Ethernet ports and 2 extra independent 1000Base-X Gigabit SFP ports.
- Ports 1-8 support IEEE 802.3af/at PoE standard; up to 40W power output per PoE port.
- Allows and assures packets to be forwarded by all ports at full wire speed.
- Supports VLAN, IGMP, QoS, DHCP Snooping, Telnet, etc.
- With inductive lightening protection towards the power adapter and ports, and enterprise-level design of 1U(thickness)-steel casing and 13-inch rack; With the help of hangers, it can be installed on the standard rack.

Product Features



Enhanced Ethernet PoE+ function

All RJ45 ports support IEEE 802.3af PoE (15.4W) or 802.3at PoE+ (30W) power supply, auto detect and recognize IEEE802.3af PoE device to power supply; support PoE power intelligent management, based on the power consumption, priority and PoE power period.



Hardware security protection

ARP intrusion detection to prevent Hacker or "man in the middle" attack caused by ARP spoof, discarding the illegal ARP spoofing message which is in conformity with DHCP Snooping dynamic-binding-table or manual static-binding-table. Support IP Source Check, preventing Invalid address from MAC deceive, IP deceive, MAC/IP deceive and the deuterogenic DoS attack. Plus, DHCP Snooping function can completely eradicate the private DHCP servers to ensure the authenticity and consistency of DHCP environment.



Service security

Effectively prevent MAC-base attacks. Permit or restrict flow based on MAC address, or setup the maximum number of MAC address by port-permitted, allow static allocation by administrator for MAC address on appointed port or switch dynamic learning.



User security

Support the user authentication by 802.1X and MAC authentication, permitting the access from legal user and refusing the access from illegal user. Reduce the harm to networking security by checking and controlling the user legality.



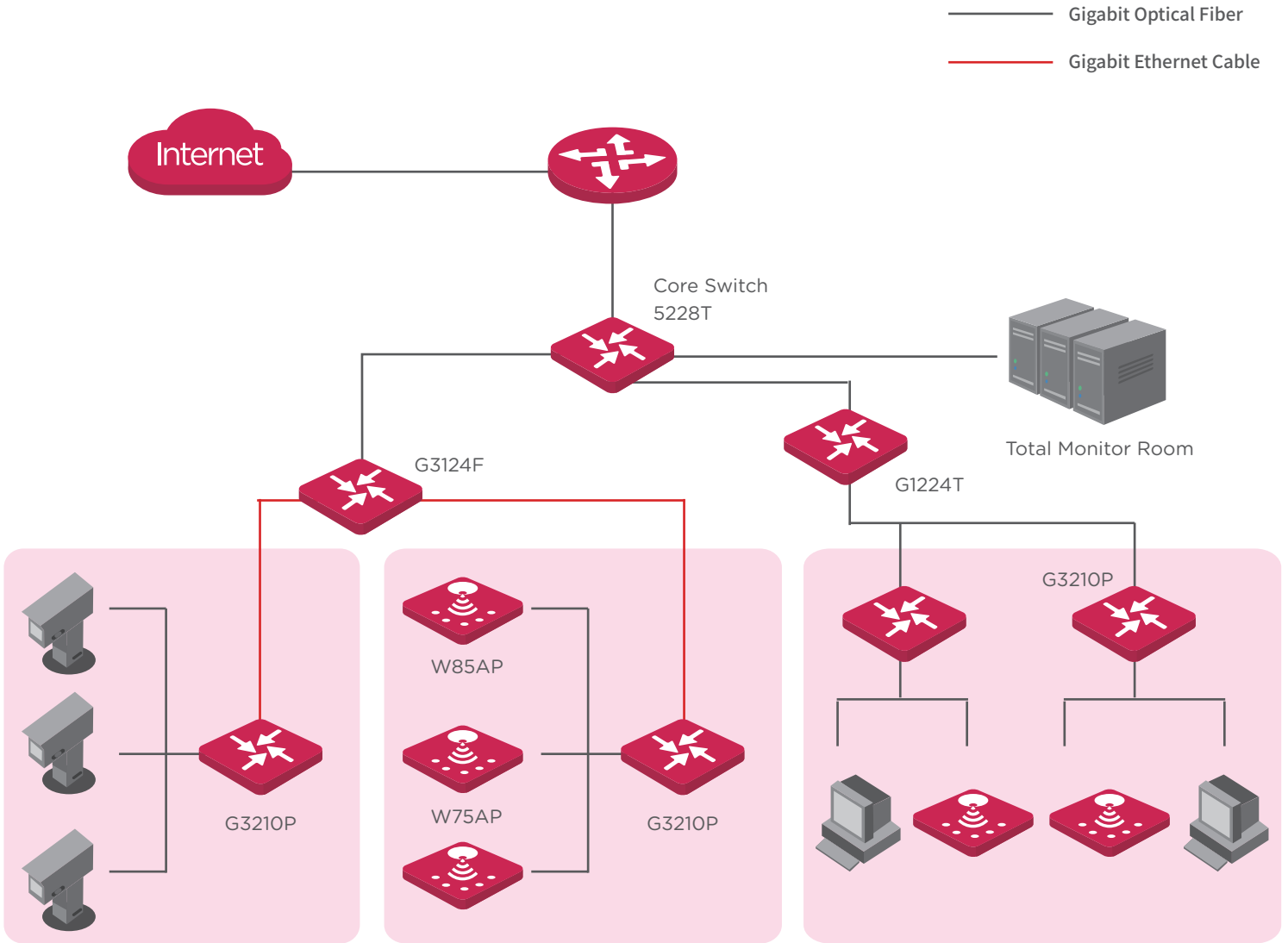
Enterprise high reliability design

Quality: Mean Time Before Failure of system, MTBF>100,000hours

Stability: 64 bit packet, time delay<10us, packet loss rate: 0

Restorability: network shaking or device breakdown, restart(recovery) time <10s

Application



Product Model		G3210P
Hardware Features		
Standards and Protocols	IEEE 802.3、 IEEE 802.3u、 IEEE 802.3z、 IEEE 802.3ab、 IEEE 802.3x、 IEEE 802.1D、 IEEE 802.1w、 IEEE 802.3af、 IEEE 802.3at、 IEEE 802.1Q、 IEEE 802.3ad	
Switching capacity	20Gbps	
Throughput	14.8Mpps	
Dimensions (W × D × H)	294mm*178.8mm*44mm	
MTBF	≥100,000 hours(about 11 years)	
Indicators	Link/Act, PoE Status, Power , System,PoE Max	
Interfaces	8 10/100/1000Mbps RJ45 Ports(Data/PoE) 2 100/1000Mbps SFP Slots (Data) (Auto Negotiation/Auto MDI/MDIX)	
Capacity	Wire-speed forwarding	Support
	Forwarding mode	Store-forward and cut-through
	Mac Address Table	8K
PoE Supply	Port 1 to Port 8 support standard IEEE802.3at/af power(maximum power for each port is 40W), PoE power type is end-span(12+, 36- line pair)	
Input Voltage	AC: 100—240V~ 50/60Hz	
Power consumption	in full configuration: <130W Power Supply: 115W	
Input Voltage	AC: 100—240V~ 50/60Hz	
Environment	Operating Temperature: 0°C~40°C (32°F~104°F) Storage Temperature: -40°C~70°C (-40°F~158°F) Operating Humidity: 10%~90% non-condensing Storage Humidity: 5%~90% non-condensing	
Software Features		
PoE management	Support setup of PoE and power adjustable by priority; Support over temperature protection for PoE module; Support graphical management, detection of PD; equipment and setting of the power consumption; PoE control and schedule by hour/weekly basis	
MAC table	Supports up to 10 VLAN IDs Port VLAN Supports up to 64 VLAN IDs 802.1Q VLAN Supports Voice VLAN	
Security	IEEE 802.1X Port/MAC Based authentication Port Security Broadcast/Multicast/Unknown-unicast Storm Control	
DHCP	DHCP Client DHCP Snooping DHCP Snooping option82	
Link aggregation	IEEE 802.3ad LACP; Static Trunk Supports 2 groups of 8-Port trunk support	
STP	STP/RSTP	
IGMP Snooping	IGMP (v1/v2) Snooping; IGMP Fast Leave mode support	
Port Mirroring	N: 1 port mirroring	
QoS	802.1p and DSCP priority re-marking; Flow control; Flexible queue scheduling algorithm can be set based on port and queue, support SP, WRR	
Management and maintenance	Support configuration through CLI, Telnet; Support SNMP v1/v2/v3 and WEB-based management; Support PING, Tracert; Support loopback detection	
Certification	FCC、 CE、 RoHS	

www.ip-com.com.cn

IP-COM

SHENZHEN IP-COM NETWORKS CO.,LTD.

ADD:Room 101, Unit A, First Floor, Tower E3, No. 1001, Zhongshanyuan Road, Nanshan District, Shenzhen,China. 518052

E-mail:info@ip-com.com.cn

Websit:www.ip-com.com.cn

Tel: +86-755-2765 3089

Fax: +86-755-2765 7178

Skype:IP-COM.Support

Specifications are subject to change without notice. Copyright ©2015 SHENZHEN IP-COM NETWORKS CO.,LTD. All rights reserved. IP-COM is the trademark of SHENZHEN IP-COM NETWORKS CO.,LTD. All other brand names mentioned herein are the trademark or registered trademarks of their respective holders.

