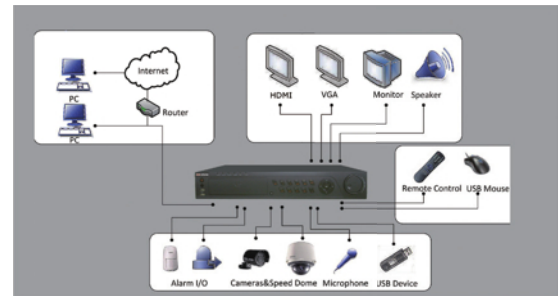


# DS-7304/7308/7316/7324/7332HFI-SH

## Standalone DVR



### Key features

- H.264 video compression
- Up to 32-ch video input
- 4CIF resolution real-time recording
- HDMI and VGA output at up to 1920×1080P resolution
- Dual-stream
- Gigabit network interfaces
- 4/8/16-ch synchronous playback
- HDD quota and group management

### Rear Panel of DS-7304HFI-SH



1. Video in
2. Main video out, spot video out
3. HDMI interface
4. USB interface
5. RS-232 serial interface
6. VGA interface
7. Audio in, RCA connector
8. Audio out, RCA connector
9. LAN network interface
10. RS-485 serial interface
11. Alarm in/out
12. eSATA interface
13. 110~240VAC power input
14. Power switch
15. GND

	DS-7304HFI-SH	DS-7308HFI-SH	DS-7316HFI-SH	DS-7324HFI-SH	DS-7332HFI-SH
<b>Video / Audio input</b>					
Video compression	H.264				
Analog video input	4-ch	8-ch	16-ch	24-ch	32-ch
Video input interface	BNC (1.0 Vp-p, 75 Ω), PAL /NTSC self-adaptive				
Audio compression	G.711				
Audio input	4-ch, RCA (2.0 Vp-p, 1 kΩ)				
Two-way audio input	1-ch, RCA (2.0 Vp-p, 1 kΩ)				
<b>Video / Audio output</b>					
HDMI/VGA output	1-ch, resolution: 1080P:1920×1080 /60 Hz; SXGA: 1280×1024 /60 Hz; 720P:1280×720 /60 Hz; XGA: 1024×768 /60 Hz.				
CVBS output	2-ch (1 Main Video Out+1 Spot Video Out), BNC (1.0 Vp-p, 75 Ω), resolution: PAL: 704×576, NTSC: 704×480				
Video spot out	1-ch, BNC (1.0 Vp-p, 75 Ω), resolution: PAL: 704 × 576, NTSC: 704 × 480				
Encoding resolution	4CIF / 2CIF / CIF / QCIF				
Frame rate	25 fps (P) / 30 fps (N)				
Video bit rate	32 Kbps ~ 3072 Kbps, or user defined (max. 3072 Kbps)				
Audio output	2-ch, RCA (linear, 600Ω)				
Audio bit rate	64 Kbps				
Dual-stream	Support; Sub-stream: CIF / QCIF @ 25 fps (P) / 30 fps (N)				
Stream type	Video, Video & Audio	Channel1-4: Video, Video & Audio; Other channels: Video			
Synchronous playback	4-ch	8-ch	16-ch		
<b>Hard disk</b>					
SATA	4 SATA interfaces				
eSATA	1 eSATA interface				
Capacity	Up to 4TB capacity for each disk				
<b>External interface</b>					
Network interface	1, RJ45 10M / 100M / 1000M Ethernet interface				
Serial interface	1 RS-232, RS-485(half-duplex), Keyboard			1 RS-232, RS-485(full-duplex), Keyboard	
USB interface	3, USB2.0				
Alarm in	4	8	16	16	
Alarm out	1	4	4	8	
<b>General</b>					
Power supply	100 ~ 240 VAC, 5A, 50~60Hz				
Consumption	≤ 25W	≤ 30W	≤ 35W	≤ 40W	
Working temperature	-10 °C ~ + 55 °C				
Working humidity	10% ~ 90%				
Chassis	19-inch rack-mounted 1.5 U chassis				
Dimensions(W x D x H)	445 × 390 × 70 mm				
Weight	≤ 5kg (without hard disk or DVD-R/W)				