

## IDS-TCE Series Highly Performing ANPR Camera



### Superiority

- Dedicated camera for ANPR
  - HD resolution
  - Integrated lamp
  - Professional shutter speed control
- Built in ANPR engine, equipped with deep learning algorithm
- Multiple detection & recognition
  - Vehicle Model Detection
  - Vehicle Color Detection

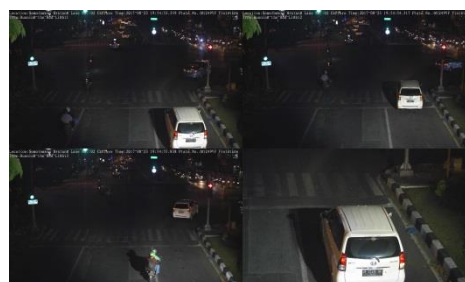


### Application

- Run the red light
- Wrong way driving
- Illegal lane changing
- Driving against guidance

### Scenarios

- Intersection
- T junction
- Other red light road



## Specifications

	IDS-TCE300-A6I/1140	DS-TCE900-AI/16
<b>Software features and Performance</b>		
Working distance[m]	18m-20m (with lens 11mm - 40mm)	20m (with lens 16mm)
Coverage	1 ~ 2 lanes	2 ~ 3 lanes
LPR Region	Mid-East, Africa, Asia-Pacific, America, Europe, Russian-speaking Countries	
Supplement Light	Strobe light/ Burst light	
OCR	ANPR engine on board	
Frame rate	25 fps	
Classification	Support (Car/minibus/Bus/Truck/non-motorized Vehicle)	
Vehicle Color	Support	
Vehicle Model	Support	
Capture Speed Range	5 ~ 250km/h	
Compression	H.265/H.264/MJPEG	
Streaming	RTSP	
<b>Configuration</b>		
Web Server	Support	
TCP/IP Server	SDK	
Date and Hour(Synchronization)	NTP/GPS/Manual	
Software Update	Web Interface/ SDK	
<b>Data Transmission</b>		
FTP	FTP; Multiple FTP	
Standard Protocols	TCP/IP, HTTP, HTTPS, FTP, DNS, DDNS, RTP, RTSP, RTCP, NTP, UPnP, IPv6, UDP	
Serial Port	3 RS-485 interface, 1 RS-232 interface	
Data Outputs	SDK/ISAPI	
<b>Trigger Mode</b>		
Video	Continuous processing with automatic vehicle detection, even without plate.	
External	I/O; RS-485	
<b>System</b>		
ANPR Camera	3MP (1/1.8" GMOS), max. 2048×1536	9MP (1" GMOS), max. 4096×2160
Illuminator	3 LED Lamps(strobe), angel: 40°, up to 30m for fill-in light on license plate	
Programming Interface	ONVIF (Version 2.1), ISAPI	
Lens	CS-Mount, 11mm-40mm C-Mount(with adapter ring needed)	CS-Mount, 16mm C-Mount(with adapter ring needed)
Operating System	Linux	
Digital I/O	4-ch input, 6-ch output	
Connector	Waterproof circular connector	
IP Protection	IP54	
Ethernet	2 RJ45 10M/100M/1000M Ethernet port	
Storage	TF card up to 128G	
GPS	Optional	
<b>Technical Data</b>		
Certifications	CE	

Operating & Storage Temperature	-30 °C ~ 70 °C (-22°F to +158°F )
Operating & Storage Humidity	5%~95%@40°C (104°F ), non-condensing
Dimensions	180mm(W)×152.7mm(H)×636mm(D)(7.09×6.01×25.04 inch)
Weight[kg]	6.5±0.5kg(14.3lb±1.1lb)
Power supply voltage	100VAC ~ 240VAC; Frequency: 48Hz ~ 52Hz
Power consumption	<30W

## Available Models:

iDS-TCE300-A6I/114

DS-TCE900-AI/16

## Dimensions

