

JVC®

The Perfect Experience / —
/

DUAL STREAM NETWORK CAMERA VN-V25U

IP Camera with Progressive Scan CCD and Simultaneous Distribution of MPEG-4 & Motion JPEG Pictures

Progressive Scan 30 VGA fps Easy Day/Night PoE Power over Ethernet DUAL STREAM



MPEG-4/Motion JPEG Dual Stream and Progressive Scan CCD to Deliver Precise Images for Versatile Monitoring and Security Applications

■ 1/4" Progressive Scan CCD for Clear, Precise Images

The VN-V25U's progressive scan images are optimal for monitoring on LCD or TFT monitors. You can obtain flicker-free noiseless images even for moving objects.

■ Simultaneous Distribution of Full-Frame MPEG-4 and Motion JPEG

The VN-V25U can stream both MPEG-4 and Motion JPEG VGA images simultaneously at the full frame rate (30 fps). MPEG-4 distribution is ideal where monitoring with smooth, high frame rate images is required within a limited bandwidth. Motion JPEG images are useful when you need to record images as evidence data, because of the high quality still pictures it can provide.

■ Easy Wide-D Function for Backlight Compensation

The VN-V25U's Easy Wide-D function is equivalent to the conventional Wide Dynamic Range function, allowing pictures to be adjusted to identify details of the subject even in difficult backlit conditions.

■ PoE for Saving Installation and Cable Costs

Built-in PoE (Power over Ethernet) allows the camera to be activated through a LAN cable connection. The PoE function not only reduces cost for installation and power units, but also enables uniform management of the power supply and easy response in case of a power failure in conjunction with UPS devices. (IEEE 802.3af supported)

■ Easy Day/Night Function for Daytime through Nighttime Surveillance

Easy Day/Night function assures round-the-clock optimum imaging performance. The VN-V25U automatically uses color mode when the object is bright, and B&W mode when it is very dark. In B&W mode, AGC remains active to ensure high performance even under low-light conditions.

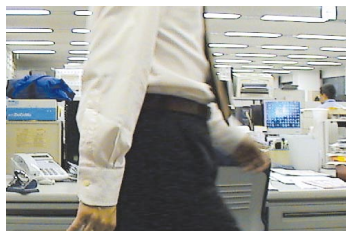
■ Electronic Sense Up for Low Light Situations

Electronic Sense Up function provides a higher sensitivity level for monitoring at dark locations by automatically lengthening the exposure time.

Full Array of Intelligent Monitoring Functions in an Easy-to-Use, Compact Design

■ 1/4" Progressive Scan CCD for Clear, Precise Images

The VN-V25U's progressive scan images are optimal for monitoring on LCD or TFT monitors. You can obtain flicker-free noiseless images even for moving objects.



VN-V25U Progressive scan



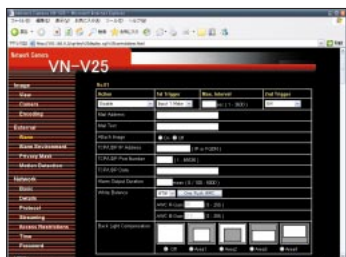
Interlaced scan

■ Privacy Mask for Protecting Intrusive Monitoring

Free shape and unlimited number of masked areas can protect subjects from invasion of privacy.

■ Easy Setup and Viewing with Built-in Tools

Initial setup of the VN-V25U is through Internet Explorer. Since all necessary tools are built into the camera unit, just access the camera via a PC and the setup tools and viewer tool will be available on screen. With the built-in viewer, a variety of operations including snapshot and alarm notification are possible.



Set-up screen



Built-in Viewer

■ Downsized and Lightweight Body

The VN-V25U is 20% smaller and 10% lighter than a conventional JVC box-type camera. In addition, thanks to the inner tripod base, it can be installed into an even smaller housing.

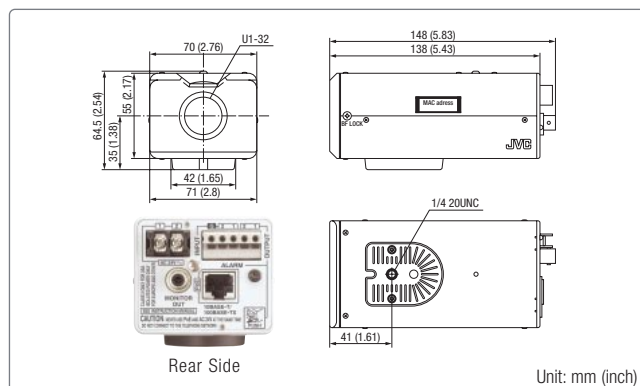
■ Lowest Operating Temperature of -10°C

The VN-V25U can be used in a wide range of environments. Its operable temperature range is from -10°C to 50°C (14°F to 122°F). No special housing is necessary for installation even when switching from an existing CCTV system.

■ Other Features

- Motion Detection
- NTSC/PAL Monitor Output (only for set-up)
- FTP/Client Function
- Multicasting Capability
- Compatible with JVC Network Video Recorder VR-N900/1600 Series
- Compatible with JVC VN-RS800U (Free software for surveillance with up to 8 cameras)

■ Dimensions and Rear Side



■ Specifications

CAMERA	
Image device	1/4" Progressive scan CCD
Number of effective pixels	330,000 (659H x 494V)
Minimum illumination (typical)	
Color mode:	1.0 lx, F1.2, AGC SUPER (50% video level) 0.5 lx, F1.2, AGC SUPER (25% video level)
B&W mode:	0.8 lx, F1.2, AGC SUPER (50% video level) 0.4 lx, F1.2, AGC SUPER (25% video level)
Iris control	DC iris
White balance	ATW/AWC
AES	AUTO, 1/30 to 1/10000
AGC	OFF/MID/HIGH/SUPER
Sense Up	x 2 to x 62
Motion detection	Yes (on/off)
Private mask	Yes (Free shape, unlimited number of masked areas)
Display mode	CUSTOM, LCD1, LCD2, CRT
Lens mount	C/C/S
NETWORK	
Network interface	RJ45 (CAT5), 10BASE-T/100BASE-TX
Picture resolution (pixel)	640 x 480, 320 x 240
Compression	Motion JPEG: VFS 7 steps, AFS 10KB - 100KB MPEG4: Part 2 (ISO/IEC 1449602) CBR or VBR selectable Profile: SP
Frame rate (max.)	30 fps in all resolutions
Compression level	91 (Average), 7 (Variable)
Pre/Post alarm buffer	8 MB
Access protection	3 levels password
Data transmission	Unicast/Multicast (IGMP Ver. 2)
Protocol	TCP/IP, UDP/IP, FTP, ICMP, ARP, DHCP, SNMP, HTTP, DSCP
Max. clients	20 simultaneous users Unlimited users using multicast
GENERAL	
Alarm I/O	Input x 2, Output x 2
Monitor output	Yes (Only for setup, unavailable during network output)
Power supply	24V AC / 48V DC (PoE)
Power consumption	0.35A (24V AC) / 5.5W (PoE)
Operating temperature range	-10 °C to 50 °C (0 °C to 40 °C recommended)
Dimensions (W x H x D)	65 mm x 55 mm x 115 mm
Weight	480g
SYSTEM REQUIREMENT (recommended)	
OS	Windows® XP Home Edition (SP2) Windows® XP Professional (SP2)
CPU	Pentium® 4, 1.5GHz or higher
Memory	More than 1 GB
HDD space	More than 512 MB
Display/Video card	1,024 x 768 pixels, True color (24-bit or 32-bit) VRAM 256 MB