



RGPS-92222GCP-NP Series

RGPS-92222GCP-NP Series

➔ **Industrial 26-port managed Gigabit PoE Ethernet switch with 22x10/100/1000Base-T(X) P.S.E., 2xGigabit combo P.S.E. and 2x100/1000Base-X, SFP socket**

Features

- Support **O-Ring** (recovery time < 30ms over 250 units of connection) and MSTP(RSTP/STP compatible) for Ethernet Redundancy
- **Open-Ring** support the other vendor's ring technology in open architecture
- **O-Chain** allow multiple redundant network rings
- Support standard IEC 62439-2 **MRP*NOTE** (Media Redundancy Protocol) function
- 24 port P.S.E. fully compliant with IEEE802.3at standard, provide up to 30 Watts per port
- Support PoE on/off scheduled configuration
- Support PoE alive check and auto reboot function
- Support IPV6 new internet protocol version
- Support Modbus TCP protocol
- Support IEEE 802.3az **Energy-Efficient Ethernet** technology
- Provided HTTPS/SSH protocol to enhance network security
- Support SMTP client and NTP server protocol
- Support IP-based bandwidth management
- Support application-based QoS management
- Support Device Binding security function
- Support DOS/DDOS auto prevention
- IGMP v2/v3 (IGMP snooping support) for filtering multicast traffic
- Support SNMP v1/v2c/v3 & RMON & 802.1Q VLAN Network Management
- Support ACL, TACACS+ and 802.1x User Authentication for security
- Support 9.6K Bytes Jumbo Frame
- Support full/half-duplex transmission
- SFP socket support DDM function
- Multiple notification for warning of unexpected event
- Support **DBU-01** backup unit device to quickly backup/restore configuration
- Web-based, Telnet, Console (CLI), and Windows utility (**Open-Vision**) configuration
- Support LLDP Protocol
- 19 inches rack mountable design

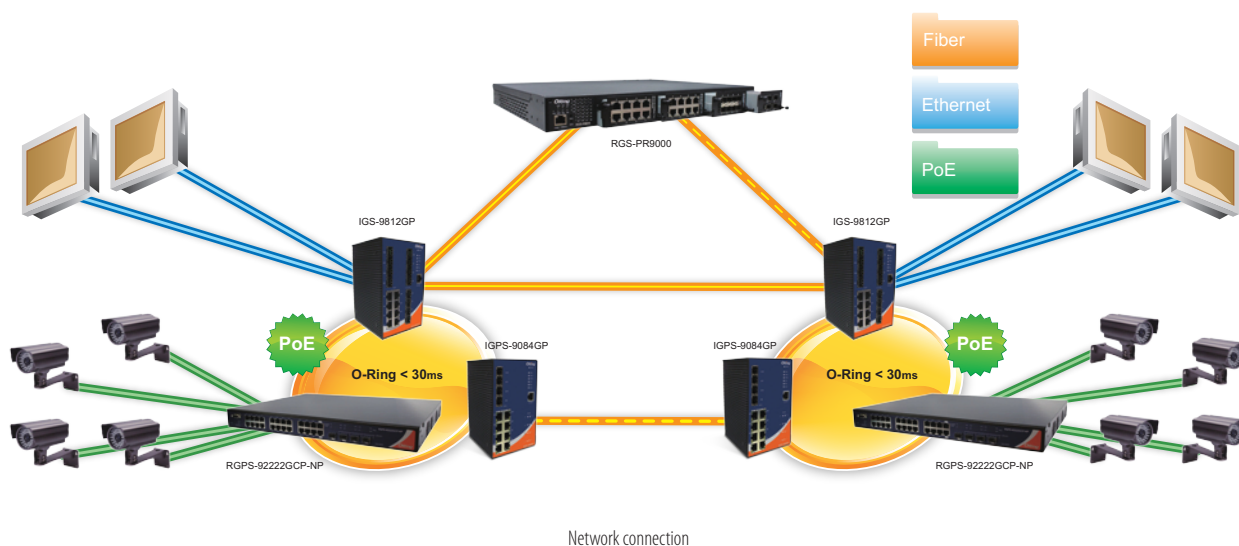


Introduction

RGPS-92222GCP-NP series are Gigabit managed redundant ring PoE Ethernet switch with 22x10/100/1000Base-T(X) IEEE802.3at P.S.E. ports and 2xGigabit combo IEEE802.3at P.S.E. ports and 2x100/1000Base-X SFP ports. These switches support Ethernet Redundancy protocol, **O-Ring** (recovery time < 30ms over 250 units of connection) and MSTP (RSTP/STP compatible) can protect your mission-critical applications from network interruptions or temporary malfunctions with its fast recovery technology. RGPS-92222GCP-NP series also support Power over Ethernet, a system to transmit electrical power up to **30 watts**, along with data, to remote devices over standard twisted-pair cable in an Ethernet network. Each RGPS-92222GCP-NP switch has (22+2) x10/100/1000Base-T(X) P.S.E. (Power Sourcing Equipment) ports. P.S.E. is a device (switch or hub for instance) that will provide power in a PoE connection. RGPS-92222GCP-NP series can also be managed centralized and convenient by Open-Vision, Except the Web-based interface, Telnet and console (CLI) configuration. Therefore, the switch is one of the most reliable choice for highly-managed and Fiber PoE Ethernet application.

*NOTE: This function is available by request only

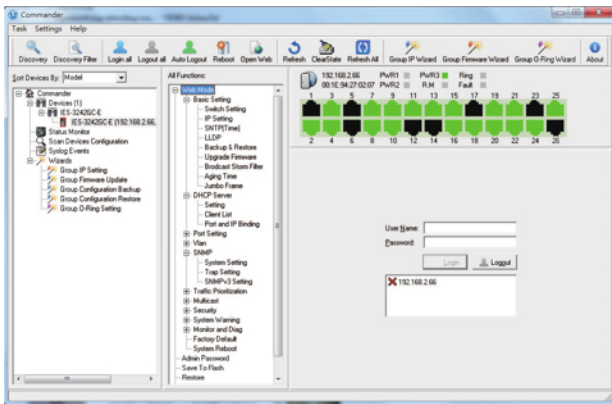
- **O-Ring** : O-Ring is ORing's proprietary redundant ring technology, with recovery time of less 30 milliseconds and up to 250 nodes. The O-Ring redundant ring technology can protect mission-critical application from network interruptions or temporary malfunction with its fast recover technology.
- **Open-Ring** : Open-Ring is an enhanced redundant technology that makes ORing's switches compatible with other vendor's proprietary redundant ring technologies. It enables ORing's switches to form a single ring with other vendor's switch. In cases where the ring is setup using proprietary technology, ORing offers a compatibility service where ORing can make its switches compatible with your particular network requirements.
- **O-Chain** : O-Chain is the revolutionary network redundancy technology that provides the add-on network redundancy topology for any backbone network, O-Chain allows multiple redundant network rings of different redundancy protocols to join and function together as a larger and more robust compound network topology. O-Chain providing ease-of-use while maximizing fault-recovery swiftness, flexibility, compatibility, and cost-effectiveness in one set of network redundancy topology.
- **MRP^{NOTE}** : Media Redundancy Protocol (MRP) is a data network protocol standardized by the IEC 62439-2. It allows rings of Ethernet switches to overcome any single failure with recovery time much faster than achievable with Spanning Tree Protocol.
- **IP-based Bandwidth Management** : The switch provide advanced IP-based bandwidth management which can limit the maximum bandwidth for each IP device. User can configure IP camera and NVR with more bandwidth and limit other device bandwidth.
- **Application-Based QoS** : The switch also support application-based QoS. Application-based QoS can set highest priority for data stream according to TCP/UDP port number.
- **Device Binding Function** : ORing special Device Binding function can only permit allowed IP address with MAC address to access the network. Hacker cannot access the IP surveillance network without permission. It can avoid hacker from stealing video privacy data and attacking IP camera, NVR and controllers.
- **Advanced DOS/DDOS Auto Prevention** : The switch also provided advanced DOS/DDOS auto prevention. If there is any IP flow become big in short time, the switch will lock the source IP address for certain time to prevent the attack. It's hardware based prevention so it can prevent DOS/DDOS attack immediately and completely.
- **Modbus TCP** : This is a Modbus variant used for communications over TCP/IP networks.
- **IEEE 802.3az Energy-Efficient Ethernet** : This is a set of enhancements to the twisted-pair and backplane Ethernet family of networking standards that will allow for less power consumption during periods of low data activity. The intention was to reduce power consumption by 50% or more.



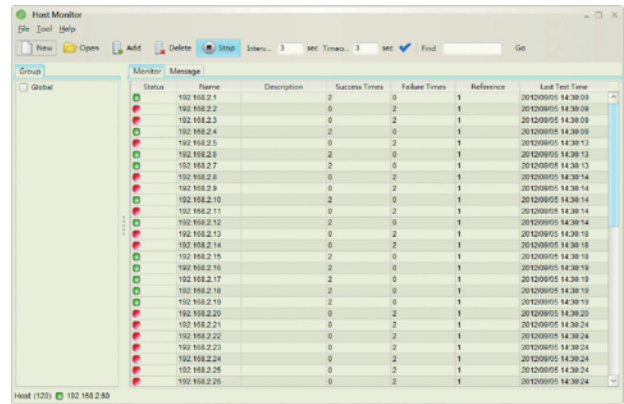
*NOTE: This function is available by request only

Open-Vision

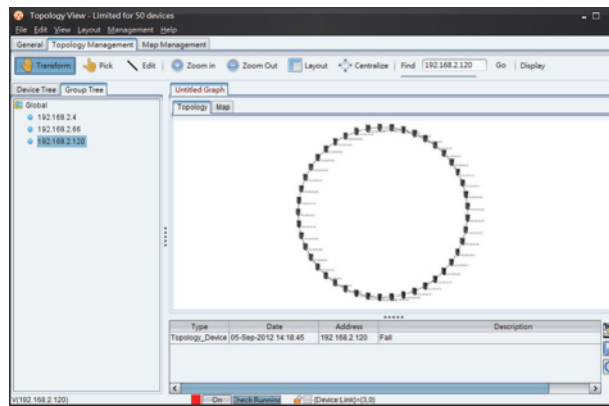
ORing's switches are intelligent switches. Different from other traditional redundant switches, ORing provides a set of Windows utility (Open-Vision) for user to manage and monitor all of industrial Ethernet switches on the industrial network.



Commander



Host Monitor



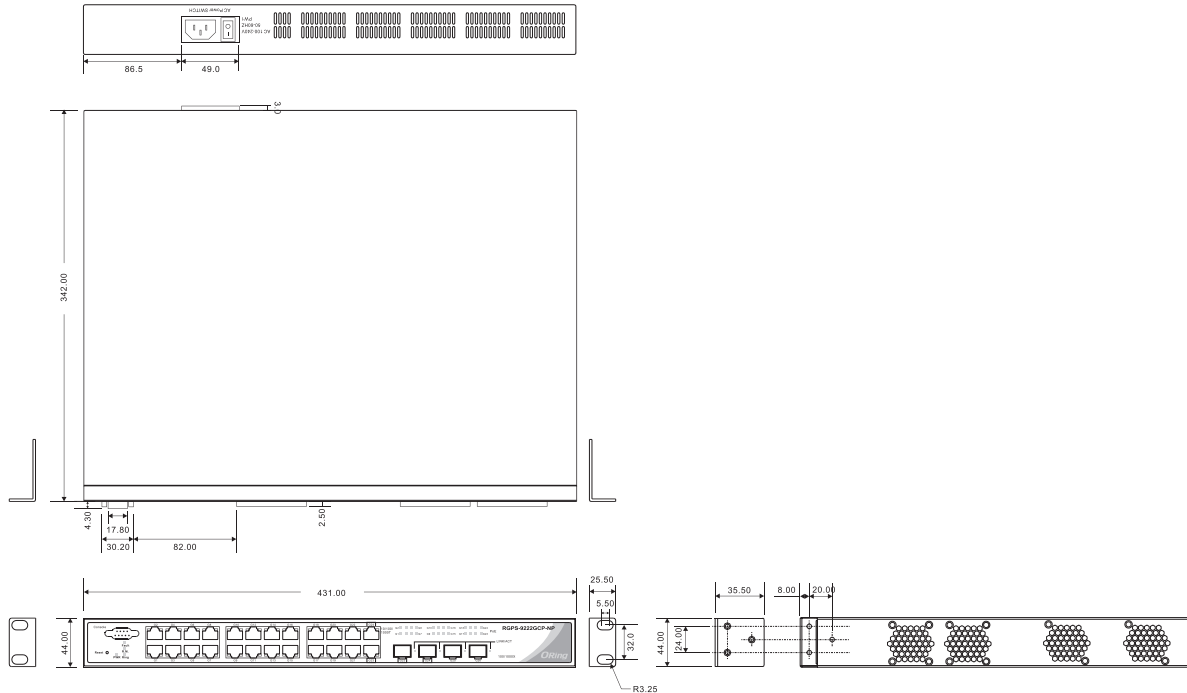
Topology View

PoE Pin Definition

| 10/100Base-T(X) P.S.E. RJ-45 Port | |
|-----------------------------------|----------------------------|
| RJ-45 Pin Definition | |
| Pin No. | Description |
| #1 | TD+ with PoE Power input + |
| #2 | TD- with PoE Power input + |
| #3 | RD+ with PoE Power input - |
| #6 | RD- with PoE Power input - |

| 1000Base-T P.S.E. RJ-45 Port | |
|------------------------------|-------------------------------|
| RJ-45 Pin Definition | |
| Pin No. | Description |
| #1 | BI_DA+ with PoE Power input + |
| #2 | BI_DA- with PoE Power input + |
| #3 | BI_DB+ with PoE Power input - |
| #4 | BI_DC+ |
| #5 | BI_DC- |
| #6 | BI_DB- with PoE Power input - |
| #7 | BI_DD+ |
| #8 | BI_DD- |

Dimensions



(Unit=mm)

Specifications

| ORing Switch Model | RGPS-92222GCP-NP-LP | RGPS-92222GCP-NP-P | RGPS-92222GCP-NP |
|---|--|---|------------------|
| Physical Ports | | | |
| 10/100/1000Base-T(X) with P.S.E. Ports in RJ45 Auto MDI/MDIX | | 22 | |
| Gigabit Combo port with 10/100/1000Base-T(X)P.S.E. and 100/1000Base-X SFP ports | | 2 | |
| 100/1000Base-X with SFP port | | 2 | |
| Technology | | | |
| Ethernet standards | IEEE 802.3 for 10Base-T IEEE 802.3u for 100Base-TX and 100Base-FX IEEE 802.3ab for 1000Base-T IEEE 802.z for 1000Base-X IEEE 802.3x for Flow control IEEE 802.3ad for LACP (Link Aggregation Control Protocol) IEEE 802.1p for COS (Class of Service) IEEE 802.1Q for VLAN Tagging IEEE 802.1w for RSTP (Rapid Spanning Tree Protocol) IEEE 802.1s for MSTP (Multiple Spanning Tree Protocol) IEEE 802.1x for Authentication IEEE 802.1AB for LLDP (Link Layer Discovery Protocol) IEEE 802.3at PoE specification (up to 30 Watts per port for P.S.E.) RGPS-92222GCP-NP-LP : Total power budget is 320Watts with maximum RGPS-92222GCP-NP-P : Total power budget is 720Watts with maximum RGPS-92222GCP-NP : Total power budget is 720Watts and based-on external power supply spec | | |
| MAC table | 8K | | |
| Priority queues | 8 | | |
| Processing | Store-and-Forward | | |
| Switch properties | Switching latency: 7 us Max. Number of Available VLANs: 4095 IGMP multicast groups: 256 for each VLAN | Switching bandwidth: 52Gbps VLAN ID Range : VID 1 to 4094 Port rate limiting: User Define | |
| Switch properties | Switching latency: 7 us Max. Number of Available VLANs: 4095 IGMP multicast groups: 256 for each VLAN | Switching bandwidth: 52Gbps VLAN ID Range : VID 1 to 4094 Port rate limiting: User Define | |
| Jumbo frame | Up to 9.6K Bytes | | |

Industrial Ethernet Switch

Industrial Media Converter

Industrial Device Server

Industrial Wireless Access Point

Industrial Cellular VPN Router

Industrial M2M Gateway

Accessories

Network Management Software

| | | | |
|--|---|---|------------------------------|
| Security features | Device Binding security feature Enable/disable ports, MAC based port security Port based network access control (802.1x) Single 802.1x and Multiple 802.1x MAC-based authentication QoS assignment Guest VLAN MAC address limit TACACS+ VLAN (802.1Q) to segregate and secure network traffic Radius centralized password management SNMPv3 encrypted authentication and access security Https / SSH enhance network security Web and CLI authentication and authorization Authorization (15 levels) IP source guard | | |
| Software features | IEEE 802.1D Bridge, auto MAC address learning/aging and MAC address (static) Multiple Registration Protocol (MRP) MSTP (RSTP/STP compatible) Redundant Ring (O-Ring) with recovery time less than 30ms over 250 units TOS/Diffserv supported Quality of Service (802.1p) for real-time traffic VLAN (802.1Q) with VLAN tagging IGMP v2/v3 Snooping IP-based bandwidth management Application-based QoS management DOS/DDOS auto prevention Port configuration, status, statistics, monitoring, security DHCP Server/Client DHCP Relay Modbus TCP DNS client proxy SMTP Client NTP server | | |
| Network redundancy | O-Ring Open-Ring O-Chain MRP* NOTE MSTP (RSTP/STP compatible) | | |
| RS-232 Serial Console Port | RS-232 in DB-9 connector with console cable. 115200bps, 8, N, 1 | | |
| LED Indicators | | | |
| Power indicator (PWR) | Green : Power indicator | | |
| Ring master indicator (R.M.) | Green : Indicates that the system is operating in O-Ring Master mode | | |
| O-Ring Indicator (Ring) | Green : Indicates that the system operating in O-Ring mode Green Blinking : Indicates that the Ring is broken. | | |
| Fault Indicator (Fault) | Amber : Indicate unexpected event occurred | | |
| 10/100/1000Base-T(X) RJ45 Port Indicator | Dual color LED for Speed/Link/Act indicator ~ Green : 1000Mbps Link/Act Amber : 10/100Mbps Link/Act | | |
| 100/1000Base-X SFP Port Indicator | Green for port Link/Act. | | |
| PoE Indicator | Green : PoE enabled LED x 24 | | |
| Fault contact | | | |
| Relay | None | | |
| Power | | | |
| Power Input | 100~240VAC with power socket | 50 ~ 57VDC with terminal block | |
| Power supply | 450 Watts power supply included (320W power budget) | 1000 Watts power supply included (720W power budget) | Power supply not include |
| Power consumption (Typ.) | 37 Watts (P.D. not included) | 37 Watts (P.D. not included) | 17 Watts (P.D. not included) |
| Overload current protection | Present | | |
| Reverse Polarity Protection | Not Present | | |
| Physical Characteristics | | | |
| Enclosure | 19 inches rack-mountable | | |
| Dimensions (W x D x H) | 431 (W) x 342 (D) x 44 (H) mm (16.97 x 13.47 x 1.73 inch) | | |
| Weight (g) | 5000 g | 5730 g | 3982 g |
| Environmental | | | |
| Storage Temperature | -40 to 85°C (-40 to 185°F) | | |

*NOTE: This function is available by request only

| | |
|-----------------------------|--|
| Operating Temperature | -40 to 60°C (-40 to 140°F) |
| Operating Humidity | 5% to 95% Non-condensing |
| Regulatory approvals | |
| EMI | FCC Part 15, CISPR (EN55022) class A |
| EMS | EN61000-4-2 (ESD), EN61000-4-3 (RS), EN61000-4-4 (EFT), EN61000-4-5 (Surge), EN61000-4-6 (CS), EN61000-4-8, EN61000-4-11 |
| Shock | IEC60068-2-27 |
| Free Fall | IEC60068-2-32 |
| Vibration | IEC60068-2-6 |
| Safety | EN60950-1 |
| Warranty | 5 years |

Ordering Information

RGPS-9 **AA** **B** **C** **DDD** - **EE**

| Code Definition | 10/100/1000Base-T(X) P.S.E. Port Number | Gigabit Combo Port with P.S.E. Number | Additional Port Number | Additional Port Type | Other Feature |
|-----------------|---|---------------------------------------|------------------------|--|--------------------------------|
| Option | - 22 : 22 ports | - 2 : 2 ports | - 2 : 2 ports | - GCP : Gigabit Combo ports and Gigabit SFP ports | - NP : None-PTP version |

| Available Model | Model Name | Description | Operating Temperature |
|-----------------|------------------------|---|-----------------------|
| | RGPS-92222GCP-NP-LP_US | Industrial 26-port managed Gigabit PoE Ethernet switch with 22x10/100/1000Base-T(X) P.S.E., 2xGigabit combo P.S.E. ports and 2x100/1000Base-X, SFP socket, low watts power supply included, US power cord | |
| | RGPS-92222GCP-NP-LP_EU | Industrial 26-port managed Gigabit PoE Ethernet switch with 22x10/100/1000Base-T(X) P.S.E., 2xGigabit combo P.S.E. ports and 2x100/1000Base-X, SFP socket, low watts power supply included, EU power cord | |
| | RGPS-92222GCP-NP-LP_UK | Industrial 26-port managed Gigabit PoE Ethernet switch with 22x10/100/1000Base-T(X) P.S.E., 2xGigabit combo P.S.E. ports and 2x100/1000Base-X, SFP socket, low watts power supply included, UK power cord | |
| | RGPS-92222GCP-NP-LP_JP | Industrial 26-port managed Gigabit PoE Ethernet switch with 22x10/100/1000Base-T(X) P.S.E., 2xGigabit combo P.S.E. ports and 2x100/1000Base-X, SFP socket, low watts power supply included, JP power cord | |
| | RGPS-92222GCP-NP-P_US | Industrial 26-port managed Gigabit PoE Ethernet switch with 22x10/100/1000Base-T(X) P.S.E., 2xGigabit combo P.S.E. ports and 2x100/1000Base-X, SFP socket, power supply included, US power cord | |
| | RGPS-92222GCP-NP-P_EU | Industrial 26-port managed Gigabit PoE Ethernet switch with 22x10/100/1000Base-T(X) P.S.E., 2xGigabit combo P.S.E. ports and 2x100/1000Base-X, SFP socket, power supply included, EU power cord | |
| | RGPS-92222GCP-NP-P_UK | Industrial 26-port managed Gigabit PoE Ethernet switch with 22x10/100/1000Base-T(X) P.S.E., 2xGigabit combo P.S.E. ports and 2x100/1000Base-X, SFP socket, power supply included, UK power cord | |
| | RGPS-92222GCP-NP-P_JP | Industrial 26-port managed Gigabit PoE Ethernet switch with 22x10/100/1000Base-T(X) P.S.E., 2xGigabit combo P.S.E. ports and 2x100/1000Base-X, SFP socket, power supply included, JP power cord | |
| | RGPS-92222GCP-NP | Industrial 26-port managed Gigabit PoE Ethernet switch with 22x10/100/1000Base-T(X) P.S.E., 2xGigabit combo P.S.E. ports and 2x100/1000Base-X, SFP socket | |

Packing List

- RGPS-92222GCP-NP/LP/P x 1
- ORing Tool CD x 1
- Quick Installation Guide x 1
- Rack-mount Kit x 1
- Power Cable x 1

Optional Accessories (Can be purchased separately)

- Open-Vision M500 : Powerful Network Management Windows Utility Suit, 500 IP devices
- SFP100M series : 100Mbps SFP optical transceiver
- SFP 1G series : 1Gbps SFP optical transceiver
- DBU-01 : backup unit device