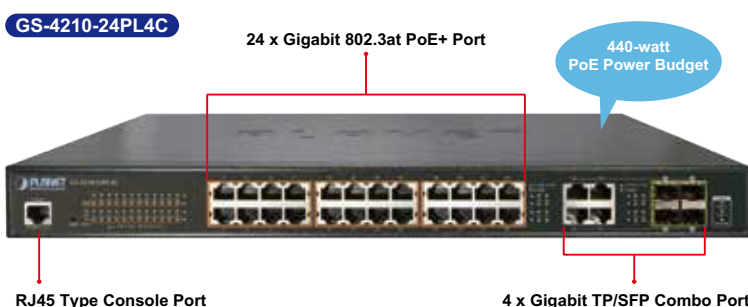
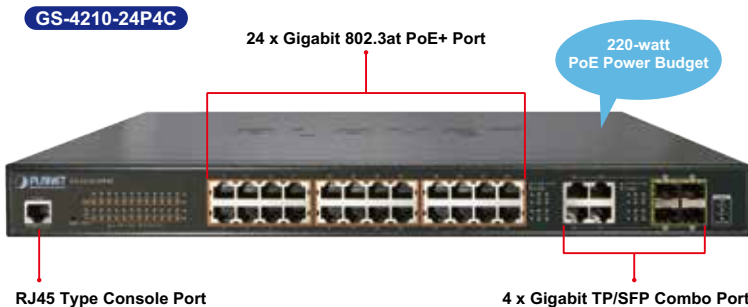


24-Port 10/100/1000T 802.3at PoE + 4-Port Gigabit TP/SFP Combo Managed Switch



A Perfect Managed PoE+ Switch with Advanced L2/L4 Switching and Security

The GS-4210-24P(L)4C is a new generation of PLANET managed Gigabit PoE+ Switch featuring PLANET **intelligent PoE** functions to improve the availability of critical business applications. It provides IPv6/IPv4 dual stack management and built-in L2/L4 Gigabit switching engine along with **24 10/100/1000BASE-T** ports featuring **30-watt 802.3at PoE+** and **4 additional Gigabit TP/SFP combo ports**. With a total power budget of up to 220 watts and 440 watts for different kinds of PoE applications, respectively, the GS-4210-24P4C and GS-4210-24PL4C provide a quick, safe and cost-effective Power over Ethernet network solution for small businesses and enterprises.



Built-in Unique PoE Functions for Powered Devices Management

As a managed PoE switch for surveillance, wireless and VoIP networks, the GS-4210-24P(L)4C features special PoE management functions:

- PD alive check
- Scheduled power recycling
- PoE schedule
- PoE usage monitoring

Physical Port

- **28-port 10/100/1000BASE-T** Gigabit RJ45 copper with 24-port IEEE 802.3at/af PoE injector
- **4 100/1000BASE-X mini-GBIC/SFP** slots, shared with port-25 to port-28 compatible with 100BASE-FX SFP
- RJ45 console interface for switch basic management and setup

Power over Ethernet

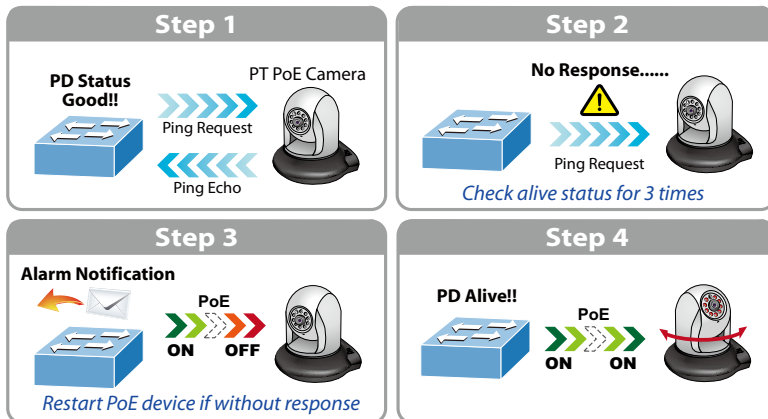
- Complies with IEEE 802.3at Power over Ethernet Plus, end-span PSE
- Backward compatible with IEEE 802.3af Power over Ethernet
- Up to 24 ports of IEEE 802.3af / 802.3at devices powered
- Supports PoE power up to 30.8 watts for each PoE port
- Auto detects powered device (PD)
- Circuit protection prevents power interference between ports
- Remote power feeding up to 100 meters
- PoE management
 - Total PoE power budget control
 - Per port PoE function enable/disable
 - PoE Port power feeding priority
 - Per PoE port power limitation
 - PD classification detection
 - PD alive-check
 - PoE schedule

Layer 2 Features

- Prevents packet loss with back pressure (half-duplex) and IEEE 802.3x pause frame flow control (full-duplex)
- High performance Store and Forward architecture, broadcast storm control, runt/CRC filtering eliminates erroneous packets to optimize the network bandwidth

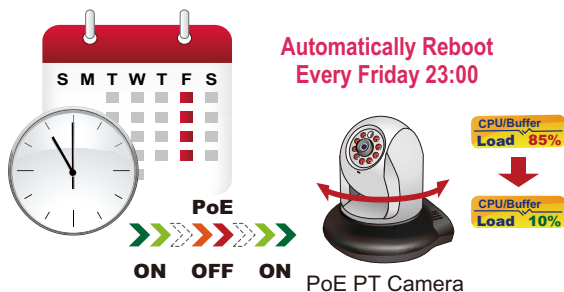
Intelligent Powered Device Alive-Check

The GS-4210-24P(L)4C can be configured to monitor connected PD (Powered Device) status in real time via ping action. Once the PD stops working and responding, the GS-4210-24P(L)4C will resume the PoE port power and bring the PD back to work. It will greatly enhance the network reliability through the PoE port resetting the PD's power source and reducing administrator management burden.



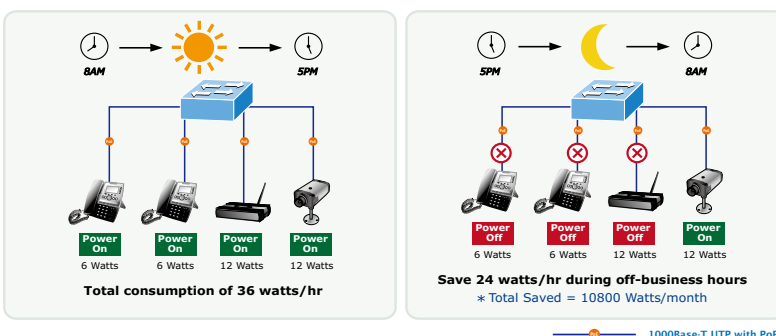
Scheduled Power Recycling

The GS-4210-24P(L)4C allows each of the connected PoE IP cameras or PoE wireless access points to reboot at a specific time each week. Therefore, it will reduce the chance of IP camera or AP crash resulting from buffer overflow.



PoE Schedule for Energy Saving

Under the trend of energy saving worldwide and contributing to environmental protection, the GS-4210-24P(L)4C can effectively control the power supply besides its capability of giving high watts power. The "PoE schedule" function helps you to enable or disable PoE power feeding for each PoE port during specified time intervals and it is a powerful function to help SMBs or Enterprises save power and money. It also increases security by powering off PDs that should not be in use during non-business hours.



- Supports **VLAN**
 - IEEE 802.1Q tagged VLAN
 - Provider Bridging (VLAN Q-in-Q) support (IEEE 802.1ad)
 - Protocol VLAN
 - Voice VLAN
 - Private VLAN
 - Management VLAN
 - GVRP
- Supports **Spanning Tree Protocol**
 - STP (Spanning Tree Protocol)
 - RSTP (Rapid Spanning Tree Protocol)
 - MSTP (Multiple Spanning Tree Protocol)
 - STP BPDU Guard, BPDU filtering and BPDU forwarding
- Supports **Link Aggregation**
 - IEEE 802.3ad Link Aggregation Control Protocol (LACP)
 - Cisco ether-channel (static trunk)
 - Maximum 8 trunk groups, up to 8 ports per trunk group
- Provides port mirror (many-to-1)
- Loop protection to avoid broadcast loops

Quality of Service

- Ingress and egress rate limit per port bandwidth control
- Storm control support
 - Broadcast / Unknown unicast / Unknown multicast
- Traffic classification
 - IEEE 802.1p CoS
 - TOS / DSCP / IP precedence of IPv4/IPv6 packets
- Strict priority and Weighted Round Robin (WRR) CoS policies

Multicast

- Supports IPv4 IGMP snooping v2 and v3
- Supports IPv6 MLD snooping v1, v2
- IGMP querier mode support
- IGMP snooping port filtering
- MLD snooping port filtering

Security

- Authentication
 - IEEE 802.1X port-based network access authentication
 - Built-in RADIUS client to co-operate with the RADIUS servers
 - RADIUS / TACACS+ login user access authentication

PoE Usage Monitoring

Via the power usage chart in the web management interface, the GS-4210-24P(L)4C enables the administrator to monitor the status of the power usage of the connected PDs in real time. Thus, it greatly enhances the management efficiency of the facilities.

Smart Fan Design for Silent Operation

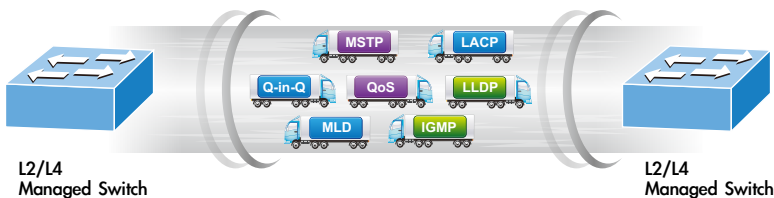
The GS-4210-24P(L)4C features a low noise design and an effective ventilation system. It supports the smart fan technology that automatically controls the speed of the built-in fan to reduce noise and maintain the temperature of the PoE switch for optimal power output capability. The GS-4210-24P(L)4C is able to operate reliably, stably and quietly in any environment without affecting its performance.

IPv6 / IPv4 Dual Stack

Supporting both IPv6 and IPv4 protocols, the GS-4210-24P(L)4C helps the SMBs to step in the IPv6 era with the lowest investment as its network facilities need not be replaced or overhauled if the IPv6 FTTx edge network is set up.

Robust Layer 2 Features

The GS-4210-24P(L)4C can be programmed for advanced switch management functions such as dynamic port link aggregation, 802.1Q VLAN and **Q-in-Q VLAN**, **Multiple Spanning Tree protocol (MSTP)**, loop and **BPDU guard**, **IGMP snooping**, and **MLD snooping**. Via the link aggregation, the GS-4210-24P(L)4C allows the operation of a high-speed trunk to combine with multiple ports such as a 16Gbps fat pipe, and supports fail-over as well. Also, the **Link Layer Discovery Protocol (LLDP)** is the Layer 2 protocol included to help discover basic information about neighboring devices on the local broadcast domain.



Efficient Traffic Control

The GS-4210-24P(L)4C is loaded with robust QoS features and powerful traffic management to enhance services to business-class data, voice, and video solutions. The functionality includes broadcast / multicast **storm control**, per port **bandwidth control**, IP DSCP QoS priority and remarking. It guarantees the best performance for VoIP and video stream transmission, and empowers the enterprises to take full advantage of the limited network resources.

Powerful Security

PLANET GS-4210-24P(L)4C offers comprehensive **IPv4 / IPv6** Layer 2 to Layer 4 **Access Control List (ACL)** for enforcing security to the edge. It can be used to restrict network access by denying packets based on source and destination IP address, TCP/UDP ports or defined typical network applications. Its protection mechanism also comprises **802.1X port-based** user and device authentication, which can be deployed with RADIUS to ensure the port level security and block illegal users. With the **protected port** function, communication between edge ports can be prevented to guarantee user privacy. Furthermore, **Port security** function allows to limit the number of network devices on a given port.

- Access control list
 - IPv4 / IPv6 IP-based ACL
 - MAC-based ACL
- MAC security
 - Static MAC
 - MAC filtering
- Port security for source MAC address entries filtering
- DHCP snooping to filter distrusted DHCP messages
- Dynamic ARP Inspection discards ARP packets with invalid MAC address to IP address binding
- IP source guard prevents IP spoofing attacks
- DoS attack prevention
- SSH/SSL

Management

- IPv4 and IPv6 dual stack management
- Switch management interface
 - Web switch management
 - Telnet command line interface
 - SNMP v1, v2c and v3
 - SSH and SSL secure access
- User privilege levels control
- Built-in Trivial File Transfer Protocol (TFTP) client
- BOOTP and DHCP for IP address assignment
- System maintenance
 - Firmware upload/download via HTTP / TFTP
 - Configuration upload / download through web interface
 - Dual images
 - Hardware reset button for system reboot or reset to factory default
- SNTP Network Time Protocol
- Cable diagnostics
- Link Layer Discovery Protocol (LLDP) and LLDP-MED
- SNMP trap for interface link up and link down notification
- Event message logging to remote Syslog server
- Four RMON groups (history, statistics, alarms and events)
- PLANET smart discovery utility
- Smart fan with speed control

Advanced Network Security

The GS-4210-24P(L)4C also provides **DHCP snooping**, **IP source guard** and **dynamic ARP inspection** functions to prevent IP snooping from attack and discard ARP packets with invalid MAC address. The network administrators can now construct highly-secured corporate networks with considerably less time and effort than before.

Friendly and Secure Management

For efficient management, the GS-4210-24P(L)4C is equipped with **console**, **web**, **telnet** and **SNMP** management interfaces. With the built-in web-based management interface, the GS-4210-24P(L)4C offers an easy-to-use, platform-independent management and configuration facility. By supporting standard Simple Network Management Protocol (SNMP), the switch can be managed via any standard management software. For text-based management, the switch can be accessed via telnet and the console port. Moreover, the GS-4210-24P(L)4C offers secure remote management by supporting **SSH**, **SSL** and **SNMPv3** connections which encrypt the packet content at each session.

Flexibility and Long-distance Extension Solution

The GS-4210-24P(L)4C provides 4 extra gigabit TP interfaces supporting 10/100/1000BASE-T RJ45 copper that connects with surveillance network devices such as NVR, video streaming server or NAS to facilitate surveillance management. Or through these **dual-speed fiber SFP slots**, it can also connect with the **100BASE-FX / 1000BASE-SX/LX SFP** (Small Form-factor Pluggable) fiber transceiver to uplink to backbone switch and monitoring center in long distance. The distance can be extended from 550 meters to 2 kilometers (multi-mode fiber) and up to above 10/20/30/40/50/70/120 kilometers (single-mode fiber or WDM fiber). They are well suited for applications within the enterprise data centers and distributions.

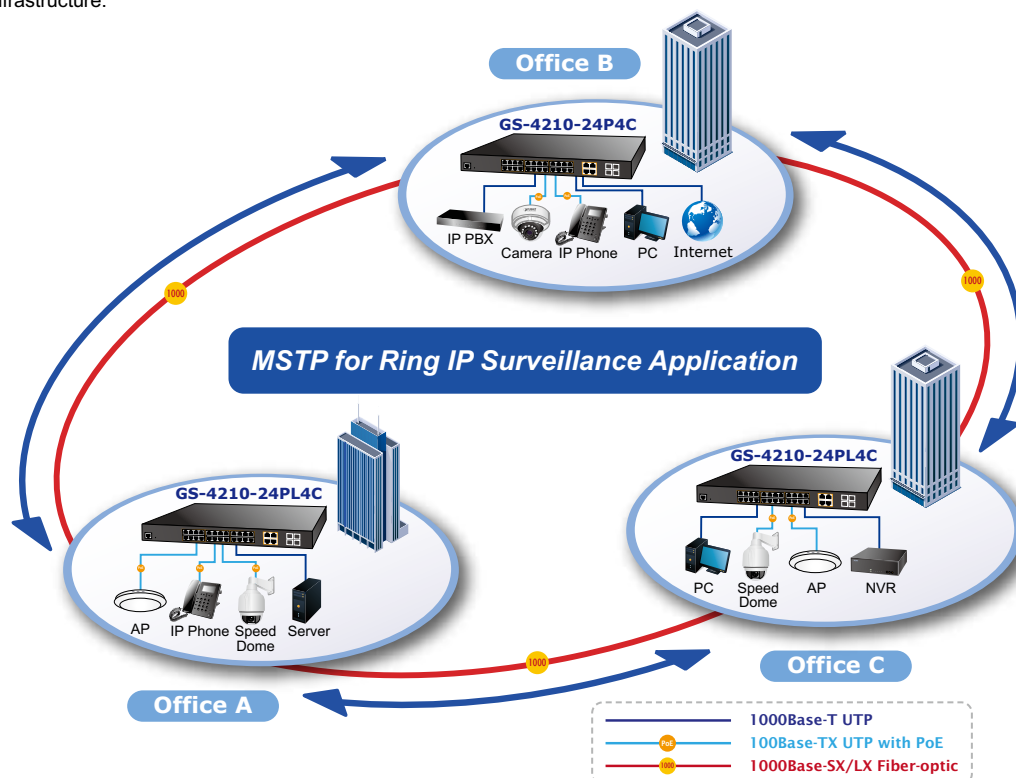
Intelligent SFP Diagnosis Mechanism

The GS-4210-24P(L)4C supports **SFP-DDM (Digital Diagnostic Monitor)** function that can easily monitor real-time parameters of the SFP for network administrator, such as optical output power, optical input power, temperature, laser bias current and transceiver supply voltage.

Applications

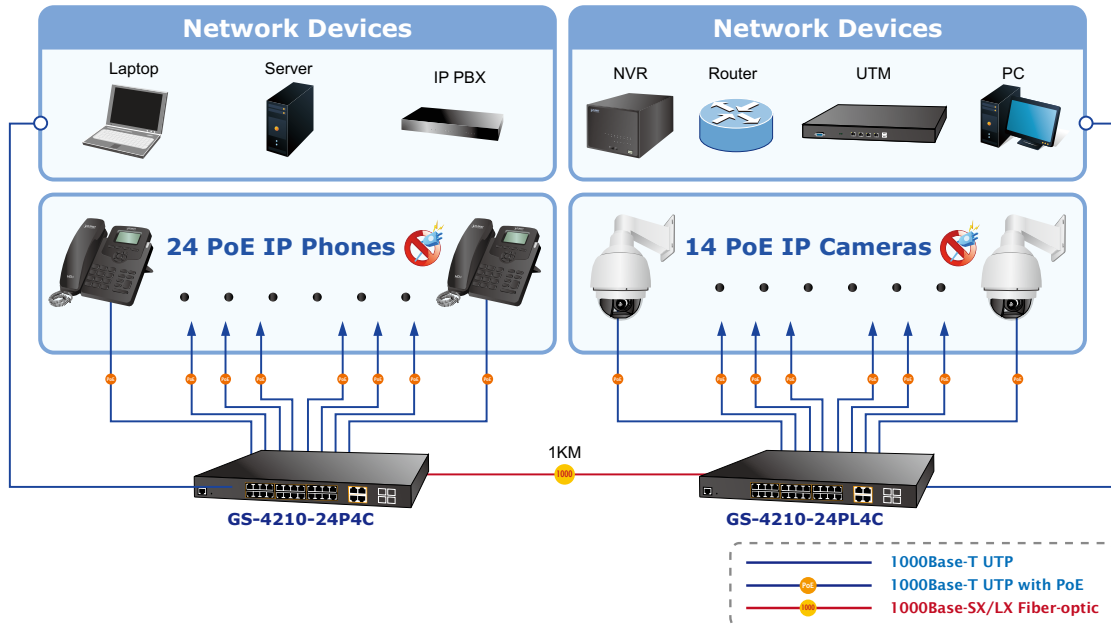
Multiple Spanning Tree Protocol with PoE IP Office Solution for SMBs / Workgroups

The GS-4210-24P(L)4C features strong rapid self-recovery capability to prevent interruptions and external intrusions. It incorporates **Multiple Spanning Tree Protocol (802.1s MSTP)** into customer's automation network to enhance system reliability and uptime. Applying the IEEE 802.3at Power over Ethernet standard, the GS-4210-24P(L)4C can directly connect with any IEEE 802.3at end-nodes like PTZ (Pan, Tilt & Zoom) network cameras and speed dome cameras. The GS-4210-24P(L)4C can easily build a power centrally-controlled wireless AP / IP Camera / VoIP system for the enterprises with highly-available network infrastructure.



High Scalability & Best Security for Today's IP Networking and Cyber Security Solution

The GS-4210-24P(L)4C comes with non-blocking design and SFP fiber-optic modules, bringing network infrastructure higher flexibility but lower in cost. Providing twenty-four 10/100/1000BASE-T PoE ports and four gigabit TP/SFP combo ports, the GS-4210-24P(L)4C can easily build a networking security on the cyber security system for the enterprises. For instance, it can work with the router and UTM to perform comprehensive security for today's businesses.



Specifications

Product	GS-4210-24P4C	GS-4210-24PL4C
Hardware Specifications		
Copper Ports	28 x 10/100/1000BASE-T RJ45 Auto-MDI/MDI-X port	
SFP/mini-GBIC Slots	4 x 100/1000BASE-X SFP interface shared with port-25 to port-28 Supports 100/1000Mbps dual mode and DDM	
PoE Injector Port	24 ports with 802.3at / af PoE injector function with port-1 to port-24	
Console	1 x RS232-to-RJ45 serial port (115200, 8, N, 1)	
Switch Architecture	Store-and-Forward	
Switch Fabric	56Gbps / non-blocking	
Switch Throughput@64Bytes	41.67Mpps	
Address Table	8K entries	
Shared Data Buffer	4.1 megabits	
Flow Control	IEEE 802.3x pause frame for full-duplex Back pressure for half-duplex	
Jumbo Frame	10K bytes	
Reset Button	< 5 sec: System reboot > 5 sec: Factory default	
Switch Architecture	PWR, SYS, LNK/ACT, PoE-in-Use, 1000, FAN 1 Alert, FAN 2 Alert, PoE PWR Alert	
Power Requirements	100~240V AC, 50/60Hz, auto-sensing	
Dimensions (W x D x H)	440 x 300 x 44.5 mm, 1U height	
ESD Protection	Contact Discharge 4KV DC Air Discharge 8KV DC	
Enclosure	Metal	
Weight	GS-4210-24P4C: 4214g	GS-4210-24PL4C: 4814g
Power Consumption / Dissipation	GS-4210-24P4C: 275 watts (max.) / 938.3 BTU	GS-4210-24PL4C: 544 watts (max.) / 1856.2 BTU
Fan	2 x smart fan	3 x smart fan
Power over Ethernet		
PoE Standard	IEEE 802.3af / 802.3at PoE+ PSE	
PoE Power Supply Type	End-span	
PoE Power Output	Per port 52V DC, 30.8 watts (max.)	
Power Pin Assignment	1/2(+), 3/6(-)	

PoE Power Budget	GS-4210-24P4C: 220 watts (max.) @ 25 degrees C 190 watts (max.) @ 50 degrees C	GS-4210-24PL4C: 440 watts (max.) @ 25 degrees C 380 watts (max.) @ 50 degrees C
PoE Ability PD @ 9 watts	GS-4210-24P4C: 24 units	GS-4210-24PL4C: 24 units
PoE Ability PD @ 15.4 watts	GS-4210-24P4C: 14 units	GS-4210-24PL4C: 24 units
PoE Ability PD @ 30 watts	GS-4210-24P4C: 7 units	GS-4210-24PL4C: 14 units
Layer 2 Functions		
Port Mirroring	TX / RX / both Many-to-1 monitor	
VLAN	802.1Q tagged-based VLAN Up to 256 VLAN groups, out of 4094 VLAN IDs 802.1ad Q-in-Q tunneling Voice VLAN Protocol VLAN Private VLAN (Protected port) GVRP	
Link Aggregation	IEEE 802.3ad LACP and static trunk Supports 8 groups of 8-port trunk	
Spanning Tree Protocol	STP, IEEE 802.1D Spanning Tree Protocol RSTP, IEEE 802.1w Rapid Spanning Tree Protocol MSTP, IEEE 802.1s Multiple Spanning Tree Protocol	
IGMP Snooping	IGMP (v2/v3) snooping IGMP querier Up to 256 multicast groups	
MLD Snooping	MLD (v1/v2) snooping, up to 256 multicast groups	
Access Control List	IPv4/IPv6 IP-based ACL / MAC-based ACL	
QoS	8 mapping ID to 8 level priority queues - Port number - 802.1p priority - 802.1Q VLAN tag - DSCP field in IP packet Traffic classification based, strict priority and WRR	
Security	IEEE 802.1X port-based authentication Built-in RADIUS client to co-operate with RADIUS server RADIUS / TACACS+ user access authentication IP-MAC port binding MAC filtering Static MAC address DHCP Snooping and DHCP Option82 STP BPDU guard, BPDU filtering and BPDU forwarding DoS attack prevention ARP inspection IP source guard	
Management Functions		
Basic Management Interfaces	Web browser / Telnet / SNMP v1, v2c Firmware upgrade by HTTP / TFTP protocol through Ethernet network Remote / Local Syslog System log LLDP protocol SNTP	
Secure Management Interfaces	SSH, SSL, SNMP v3	
SNMP MIBs	RFC 1213 MIB-II RFC 1215 Generic Traps RFC 1493 Bridge MIB RFC 2674 Bridge MIB Extensions RFC 2737 Entity MIB (Version 2) RFC 2819 RMON (1, 2, 3, 9) RFC 2863 Interface Group MIB RFC 3635 Ethernet-like MIB	

Standards Conformance	
Regulation Compliance	FCC Part 15 Class A, CE
Security	IEEE 802.3 10BASE-T
	IEEE 802.3u 100BASE-TX/100BASE-FX
	IEEE 802.3z Gigabit SX/LX
	IEEE 802.3ab Gigabit 1000T
	IEEE 802.3x flow control and back pressure
	IEEE 802.3ad port trunk with LACP
	IEEE 802.1D Spanning Tree protocol
	IEEE 802.1w Rapid Spanning Tree protocol
	IEEE 802.1s Multiple Spanning Tree protocol
	IEEE 802.1p Class of Service
	IEEE 802.1Q VLAN tagging
	IEEE 802.1x Port Authentication Network Control
	IEEE 802.1ab LLDP
	IEEE 802.3af Power over Ethernet
	IEEE 802.3at Power over Ethernet Plus
	RFC 768 UDP
	RFC 793 TFTP
	RFC 791 IP
	RFC 792 ICMP
	RFC 2068 HTTP
RFC 1112 IGMP version 1	
RFC 2236 IGMP version 2	
RFC 3376 IGMP version 3	
RFC 2710 MLD version 1	
RFC 3810 MLD version 2	
Environment	
Operating	Temperature: 0 ~ 50 degrees C
	Relative Humidity: 5 ~ 95% (non-condensing)
Storage	Temperature: -20 ~ 70 degrees C
	Relative Humidity: 5 ~ 95% (non-condensing)

Ordering Information

GS-4210-24P4C	24-Port 10/100/1000T 802.3at PoE + 4-Port Gigabit TP/SFP Combo Managed Switch / 220W PoE budget
GS-4210-24PL4C	24-Port 10/100/1000T 802.3at PoE + 4-Port Gigabit TP/SFP Combo Managed Switch / 440W PoE budget

Related Products

GS-4210-8P2T2S	8-Port 10/100/1000T 802.3at PoE + 2-Port 10/100/1000T + 2-Port 100/1000X SFP Managed Switch
WGSW-28040	24-Port 10/100/1000T + 4-Port Gigabit TP/SFP Combo Managed Switch
GSD-1020S	8-Port 10/100/1000T + 2-Port 100/1000X SFP Managed Desktop Switch
GSD-1002M	8-Port 10/100/1000T + 2-Port 100/1000X SFP Managed Desktop Switch
POE-162S	IEEE 802.3at Gigabit High Power over Ethernet Splitter
POE-E201	IEEE 802.3at Power over Gigabit Ethernet Extender

Available Modules

MGB-GT	SFP-Port 1000BASE-T Module
MGB-SX	SFP-Port 1000BASE-SX mini-GBIC module - 220/550m
MGB-LX	SFP-Port 1000BASE-LX mini-GBIC module - 10km
MGB-L30	SFP-Port 1000BASE-LX mini-GBIC module - 30km
MGB-L50	SFP-Port 1000BASE-LX mini-GBIC module - 50km
MGB-L70	SFP-Port 1000BASE-LX mini-GBIC module - 70km
MGB-L120	SFP-Port 1000BASE-LX mini-GBIC module - 120km
MGB-LA10	SFP-Port 1000BASE-LX (WDM,TX:1310nm) mini-GBIC module - 10km
MGB-LB10	SFP-Port 1000BASE-LX (WDM,TX:1550nm) mini-GBIC module - 10km
MGB-LA20	SFP-Port 1000BASE-LX (WDM,TX:1310nm) mini-GBIC module - 20km
MGB-LB20	SFP-Port 1000BASE-LX (WDM,TX:1550nm) mini-GBIC module - 20km
MGB-LA40	SFP-Port 1000BASE-LX (WDM,TX:1310nm) mini-GBIC module - 40km
MGB-LB40	SFP-Port 1000BASE-LX (WDM,TX:1550nm) mini-GBIC module - 40km

Available 100Mbps Modules

MFB-FX	SFP-Port 100BASE-FX Transceiver (1310nm) - 2km
MFB-F20	SFP-Port 100BASE-FX Transceiver (1310nm) - 20km
MFB-F40	SFP-Port 100BASE-FX Transceiver (1310nm) - 40km
MFB-F60	SFP-Port 100BASE-FX Transceiver (1310nm) - 60km
MFB-FA20	SFP-Port 100BASE-BX Transceiver (WDM,TX:1310nm) - 20km
MFB-FB20	SFP-Port 100BASE-BX Transceiver (WDM,TX:1550nm) - 20km