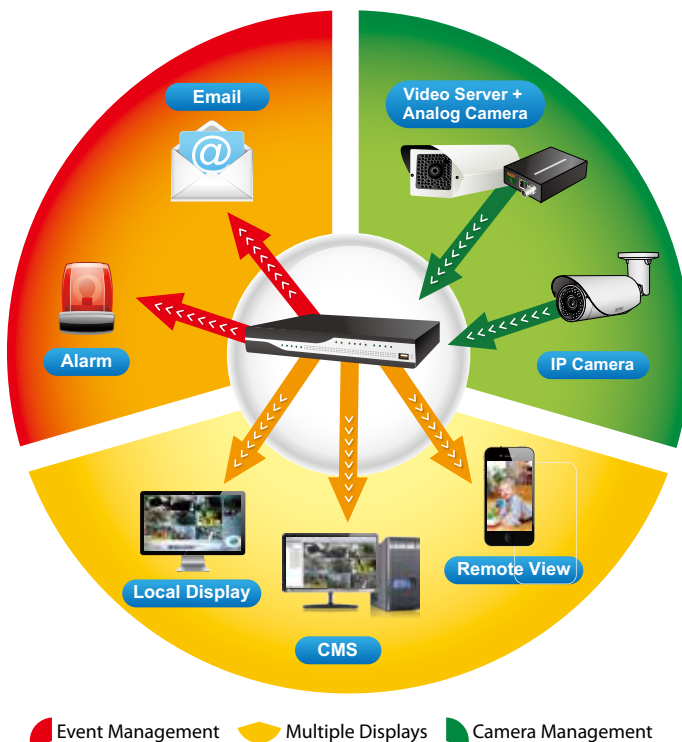


# 16-Ch Network Video Recorder



## Efficient SMB Surveillance Solution

PLANET NVR-1615 is a **16-channel** Linux embedded network video recorder (NVR) for restaurants, retail stores, stockrooms and more. The NVR-1615 supports IP cameras with up to 5 megapixels and H.264 video codec for high-quality real-time monitoring, recording and playback. It also supports high-resolution video quality on any HD monitor. With two internal 4TB SATA III hard disks and e-SATA interface, it provides you with more storage capacity and keeps video files in the NVR for a long period of time. Once the NVR-1615, armed with a complete surveillance equipment, detects any suspicious events, you will be alerted with alarm via email; FTP, HTTP and TCP servers; and more. The NVR-1615 is thus able to further enhance security within the premises to protect your property. Moreover, it is fully compatible with mobile app and Internet Explorer on Windows operating system for multi-platform remote access.



## Hardware

- Linux-embedded, highly reliable standalone NVR
- Supports Gigabit Ethernet port
- Supports VGA/HDMI dual local display
- Supports two 3.5" SATA III x 2 HDDs
- Supports e-SATA

## Video and Audio

- Simultaneous recording and live view streams
- 16-channel input of IP cameras
- Supports H.264 compression
- Video resolution up to 5 megapixels (2560 x 1920)
- Supports throughput up to 80Mbps
- 2-way audio (G.711, G.726)

## Video Recording / Backup

- Scheduled recording of 16 IP cameras simultaneously
- Samba path supported
- Supports 2 SATA HDDs, up to 4TB per HDD, and 1 e-SATA interface
- Exports recorded video file to AVI format to USB device or local storage
- Instant event notification and recording

## Network Service

- Easy access with PLANET Dynamic DNS and built-in NTP Server
- Supports PPPoE/DHCP/static network connection
- Supports low bit-rate connection for remote access

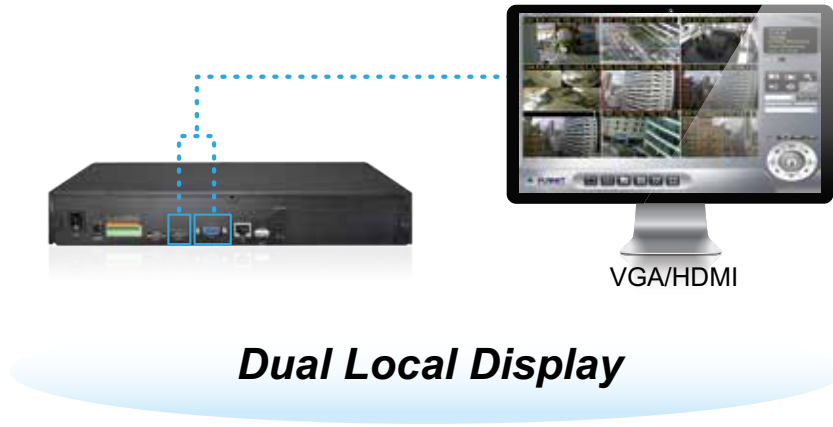
## Easy Installation and Management

- ONVIF compliant for interoperability
- Supports multiple languages
- Auto discovered by management software
- Web-based and management utility for easy configuration
- Up to 256 channels management through central management software
- Supports USB mouse and joystick (PTZ)\*
- Supports mobile phone remote view

\*The joystick is optional.

*High-resolution Local Display*

The NVR-1615 comes with HDMI and VGA video output interfaces for dual local display. It can be connected to an HDMI monitor and VGA monitor separately, where live viewing contents or playback contents can be displayed simultaneously. With the dual local display function, users can monitor locally with high flexibility in a different display resolution, thus eliminating the need for a separate PC to view video from the unit. Besides, the NVR also can be operated with the USB mouse to configure and monitor all the system easily.

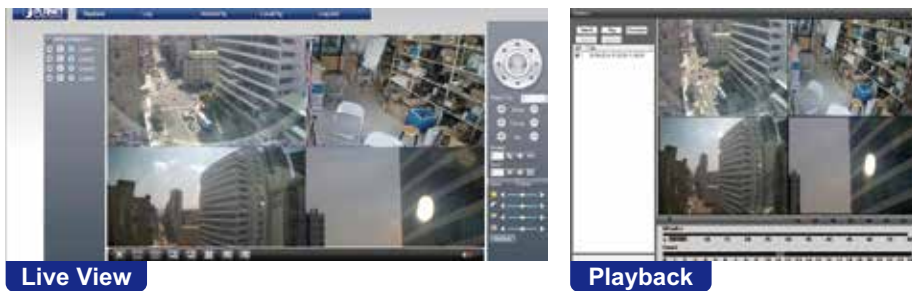


**Dual Local Display**

*Real-time, Remote Monitoring*

You are able to search and install Planet IP cameras via Web interface with more convenience and efficiency. Besides the Web interface, the NVR also supports aCV3m viewer app software for smart phone so you can connect to the NVR at anytime and anywhere.

**Real-time, Remote Monitoring**



*Live View and CMS Administration*

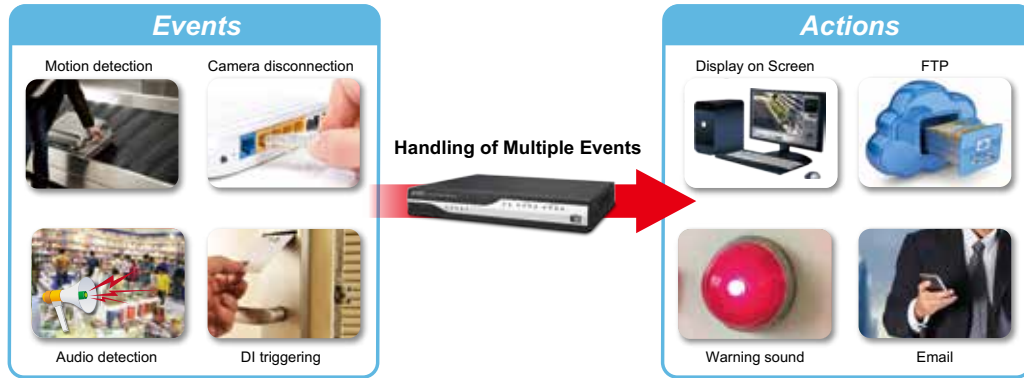
The Central Management System (CMS) of the NVR-1615 can manage up to 256 channels. With low bitrate transmission and unlimited group management, the CMS is able to view a maximum of 64 channels on one page and you may switch between groups to see up to 256 channels of live view or a maximum of 16 channels of playback on one page. The CMS of the NVR-1615 is good for chain stores via Internet large installations in the LAN environment, or any environment where its control center is utilized to monitor via multiple NVRs.



## Applications

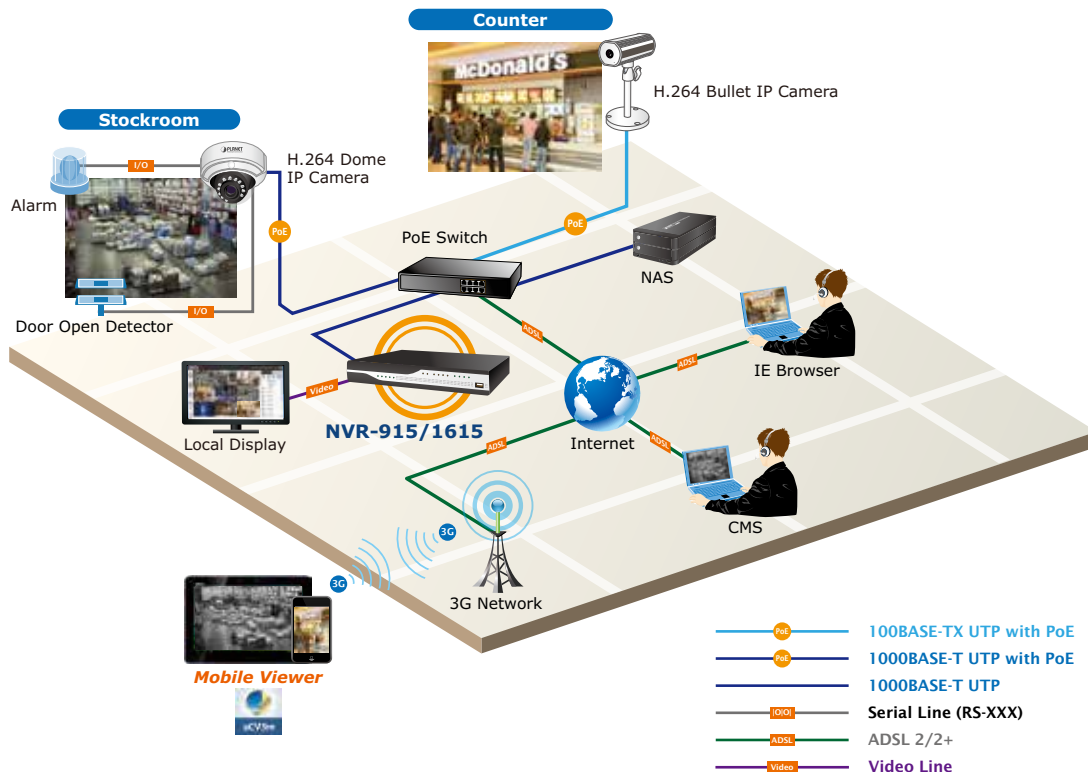
### Advanced Event Management

The NVR-1615 is equipped with multiple event detections like motion, camera disconnection, digital input detection, audio detection, HDD error and scheduled event triggering. All of them are able to send alarm through screen, digital output, buzzer, snapshot, recording, email, FTP, HTTP and TCP servers. Those alarm notifications provide you with extra protection when such event occurs so you won't miss any critical information.



### Perfect for Indoor Surveillance Applications

PLANET NVR systems can be controlled and monitored both in the local LAN and the remote site via Internet. Users can also login from their mobile phones to check the monitoring screen anywhere, anytime. It is especially perfect for indoor surveillance in such places as restaurants, retail stores, stockrooms, etc.



## Specifications

Product	NVR-1615
<b>Hardware</b>	
Ethernet	1 x RJ-45, 10/100/1000BASE-T
USB Interface	2 x USB 2.0 for backup device and mouse
Video Interface	VGA and HDMI video interfaces
Audio Interface	1 x mic-in (phone jack 3.5mm), 1 x audio-out (phone jack 3.5mm)
Storage Device	2 x 3.5" SATA III hard disk connector, 1 x e-SATA connector
LED	Power, HDD, LAN, REC, Event, Alarm, Camera, DI/DO
Button	Reset
Buzzer	1 x Buzzer
DI/DO	4 x Digital in, 4 x Digital out
<b>Camera</b>	
Max. Channels	16-channel IP cameras
Camera Added	Manual/Auto Search/Auto Setup
<b>Video</b>	
Compression	H.264
Resolution	5M/3M/Full HD/SXGA/VGA/QVGA
Max. Live Video Frame Rate (Local Display)	480fps@D130 360fps@720P30 120fps@1080P30 20fps@5M15 Max. 5MP/channel
Max. Throughput	80Mbps
Snapshot	<ul style="list-style-type: none"> <li>■ Preview snapshot in HDD or removable device</li> <li>■ Search event snapshot</li> <li>■ Backup to USB device</li> </ul>
<b>Audio</b>	
Audio Type	2-way
Audio Format	G.711, G.726
<b>Live View</b>	
Display Mode	Live View, Playback, Full Screen
Split Screen	1, 4, 6, 9, 16, Full Screen
Full Screen	1, 4, 6, 9, 16
PTZ Support	Preset, Tour, Auto Pan, Iris, Focus, Speed and Joystick
<b>Playback</b>	
Split Screen	1, 4, 6, 9, 16, Full Screen
Search Mode	Simple, Graphical, Event
Play Method	Play, Reverse, Pause, Seek, Pre I-frame, Next Frame Search by time or event
<b>Record</b>	
Recording Mode	<ul style="list-style-type: none"> <li>■ Scheduled recording each camera</li> <li>■ Round the Clock / Motion Record mode / DI Detection / Event Triggering</li> <li>■ Pre-alarm / Post-alarm configuration</li> <li>■ Auto Recycle</li> </ul>
<b>Monitor</b>	
Dual Monitor	Displays the contents, depending on max. channels
Monitor Resolutions	1920 x 1080, 1440 x 900, 1366 x 768, 1280 x 1024, 1024 x 768
<b>Network and Configuration</b>	
Network Service	Fixes IP/DHCP/PPPOE/DIPS Report/UPNP/DDNS
Notification	SMTP/HTTP/FTP/TCP
<b>Triggers and Event</b>	
Event Type	<ul style="list-style-type: none"> <li>■ Motion Alarm</li> <li>■ Alarm Disconnection</li> <li>■ Audio Detection</li> <li>■ Digital Input</li> <li>■ Scheduled Triggering</li> <li>■ HDD Error</li> </ul>

Event Action	<ul style="list-style-type: none"> <li>■ Display on Screen</li> <li>■ DO</li> <li>■ Buzzer Alarm</li> <li>■ Snapshot</li> <li>■ Recording</li> <li>■ Mail</li> <li>■ FTP</li> <li>■ TCP</li> <li>■ HTTP</li> </ul>
<b>Management</b>	
Number of Groups	2 (Administrator and User)
Privileges	Live View, Playback, Record, Setting, PTZ, Two-way Audio
User Interface	<ul style="list-style-type: none"> <li>■ Graphic local user interface (operated by mouse)</li> <li>■ Web browser (Internet Explorer 7 or above)</li> <li>■ CMS Utility</li> </ul>
Log Type	System/Event/Bit-rate
Software Utility	Search utility/Mobile app/CMS
<b>Environment</b>	
Power	12V DC, 5A
Consumption	8W (without HDD)
Operating Temperature	0~40 degrees C
Storage Temperature	-40~70 degrees C
Humidity	0~85% (non-condensing)
Weight	1455g
Dimensions (W x D x H)	330 x 252 x 57 mm

## Ordering Information

NVR-1615	16-Ch Network Video Recorder
----------	------------------------------

## Related Products

NVR-915	9-Ch Network Video Recorder
NVR-820	8-Ch Network Video Recorder with HDMI
NVR-1620	16-Ch Network Video Recorder with HDMI
NVR-3685	H.265 36-Ch Network Video Recorder with 8-Bay Hard Disks
NVR-E6480	64-Ch Windows-based NVR with 8-Bay Hard Disks