

# 12-Port Gigabit IEEE 802.3at PoE+ Managed Injector Hub (220 watts)

PLANET POE Managed PoE Injector Hub series, a cost-effective and quick PoE solution, is designed to perfectly upgrade an existing network infrastructure to IEEE 802.3at Power over Ethernet Plus network system without replacing the existing Ethernet Switch.



## *A Cost-effective Managed PoE+ Injector Hub*

With PoE in great demand, the IEEE 802.3af standard is being replaced by IEEE 802.3at (also known as PoE Plus) Type 1. PLANET new POE-1200G is specifically designed to support 802.3at PoE+. The POE-1200G is a high-density, rack-mountable managed PoE+ injector hub featuring PLANET intelligent PoE functions through web user interface for remote management. As its name implies, the unit can inject a total PoE budget of 220 watts into PDs. Its 12 10/100/1000BASE-T Ethernet ports can each deliver up to 36 watts of power over Cat.5/5e/6 Ethernet UTP cables which allow data and power to transmit simultaneously to remote 802.3at/af powered devices (PDs). The POE-1200G enables centralization of the power supply and optimizes the installation and power management of remote network devices, and provides a quick, safe and cost-effective Power over Ethernet network solution for small businesses and enterprises.

## *Quick and Easy PoE Network Deployment*

The POE-1200G is installed between a regular Ethernet Switch and the PDs. There are totally 24 RJ45 STP ports on the front panel of the POE-1200G, of which the 12 ports are on the lower stack functioned as "Data input" while the other 12 ports are on the upper stack functioned as "PoE (Data and Power) output". Both power and data are transferred simultaneously over the UTP cables to PDs without affecting the existing network performance and functions.

## Interface

- Complies with the IEEE 802.3, IEEE 802.3u and IEEE 802.3ab Ethernet standards
- 24-port RJ45
  - 12-port 10/100/1000Mbps "Data input"
  - 12-port 10/100/1000Mbps "Data + Power output"
- One 10/100/1000BASE-T management port
- Reset button for system management

## Power over Ethernet

- Complies with IEEE 802.3at and IEEE 802.3af Power over Ethernet mid-span PSE
- Up to 12 IEEE 802.3at/802.3af devices powered
- 220-watt PoE budget
- Supports PoE power up to 30.8 watts (802.3at PoE)/15.4 watts (802.3af PoE) for each PoE port
- Automatically detects powered device (PD)
- Circuit protection prevents power interference between ports
- Remote power feeding up to 100m cable length

## PoE Management

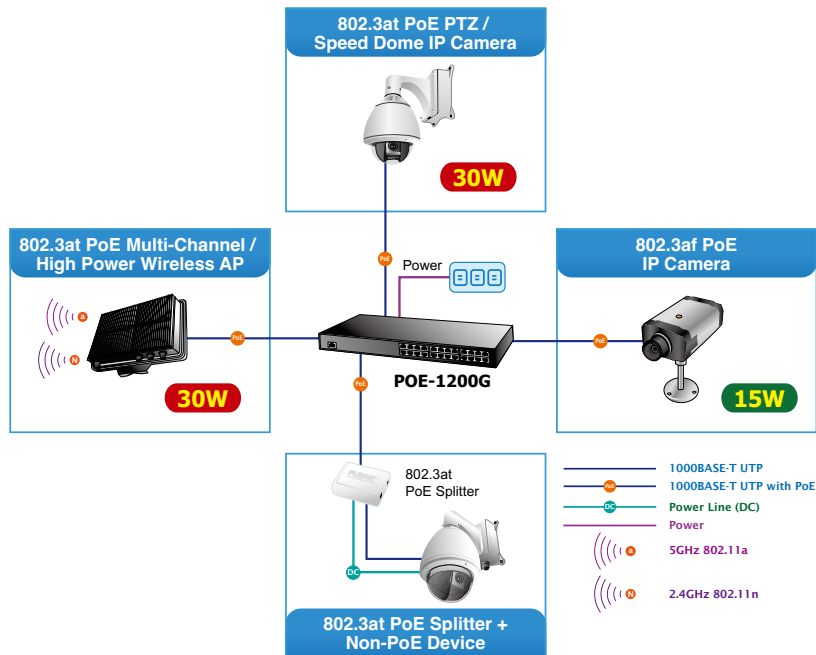
- Total PoE power budget control
- Per port PoE power schedule
- PoE function enable/disable
- Per port PoE function enable/disable
- PoE port power feeding priority
- PD classification detection
- Over temperature protection
- PD alive check

## Management

- Web interface for remote management
- Supports Network Time Protocol (NTP)
- Firmware upgrade through Web interface
- PLANET Smart Discovery utility automatically finds PLANET devices on the network
- SNMP trap for alarm notification of events
- System log and remote syslog

## Hardware

- 19-inch rack mountable; 1U height
- Reset button for resetting to default setting and system reboot
- LED indicators for PoE ready and PoE activity
- LED indicators for power alert and fan alert
- FCC Part 15 Class A, CE

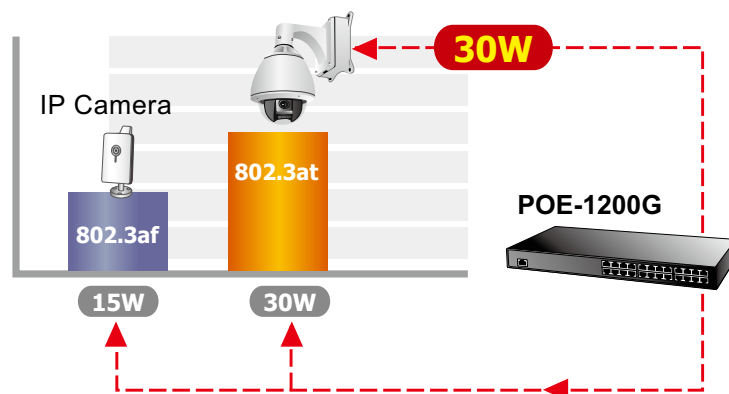


With data and Power over Ethernet from one unit, the POE-1200G can reduce power cable deployment and eliminate the need for dedicated electrical outlets on the wall, ceiling or any unreachable place.

*IEEE 802.3at PoE+ Standard Compliance*

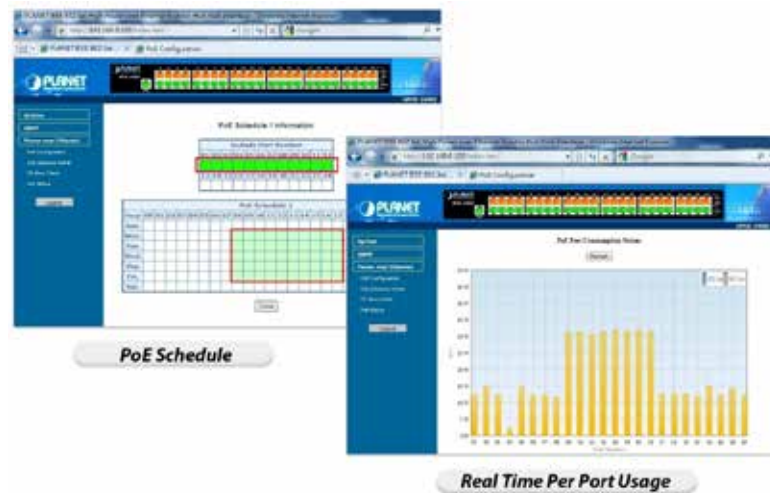
The PoE in-line power adopting the IEEE 802.3at Power over Ethernet Plus standard makes the POE-1200G able to deliver per port up to 36 watts of power to each remote PoE compliant powered device. It possesses double amount of power capability than the conventional 802.3af PoE and is an ideal solution to satisfy the growing demand for higher power consuming network PDs, such as PTZ (Pan, Tilt and Zoom), speed dome network cameras, color touch-screen or video and voice over IP (VoIP) telephones, multi-channel 802.11ac wireless LAN access points, and other network devices.

**PTZ / Speed Dome Camera**



*Friendly Web Management Interface*

To efficiently manage the powered devices, the POE-1200G provides simple Web management interface in which administrators can control the system and PoE functions for powered devices. It can automatically detect the power status of each port and show messages on its Web management interface. These features also provide users with a cost-effective way to manage the device via Internet whenever they are at work or at home.



*Built-in Unique PoE Functions for Powered Device Management*

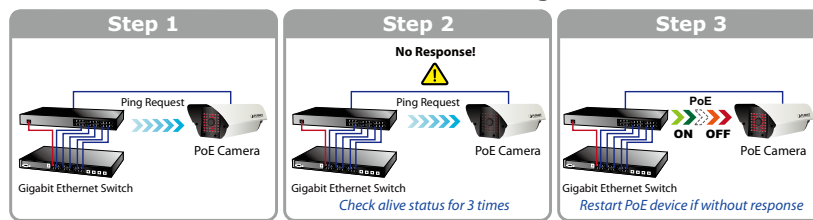
As it is the managed PoE Injector Hub for VoIP, wireless and surveillance networks, the POE-1200G features the following special PoE management functions:

- PoE schedule
- PD alive check
- Scheduled power recycling
- PoE usage monitoring
- Over temperature protection

*Intelligent Powered Device Alive Check*

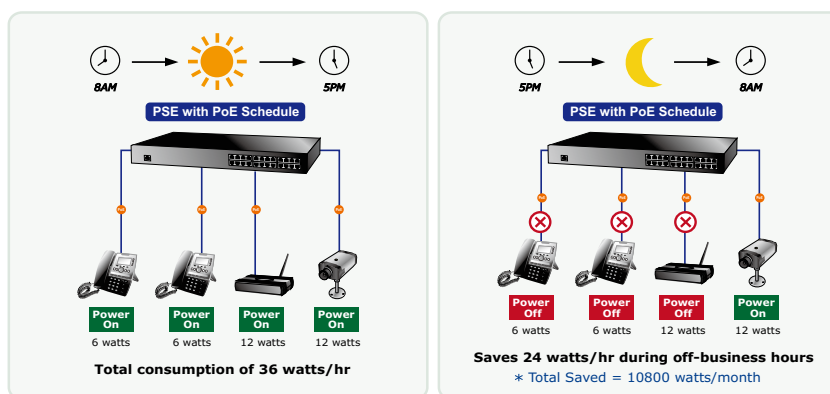
PLANET's Managed PoE products adopt not only Power over Ethernet technology, but also automated PD monitoring and real-time PoE status. The POE-1200G can be configured to monitor connected PD's status in real time via ping action through the uplinked Ethernet switch. Once the PD stops working and responding, the POE-1200G will recycle the PoE port power and bring the PD back to work. It also will greatly enhance the network reliability in that the PoE port will reset the PD power, thus reducing administrator's management burden.

**PoE PD Alive Checking**



*PoE Schedule for Energy Saving*

Under the trend of energy saving worldwide and contributing to environmental protection on the Earth, the POE-1200G can effectively control the power supply besides its capability of giving high watts power. The built-in "PoE schedule" function helps you to enable or disable PoE power feeding for each PoE port during specified time intervals and it is a powerful function to help SMBs or enterprises save power and money.



1000Base-T UTP with PoE



## Specifications

Product		POE-1200G
<b>Hardware</b>		
Hardware Version		4
Interface	“Data” Input Ports	12 x RJ45
	“Data + Power” Output Ports	12 x RJ45
	Management Port	1 x RJ45; 10/100/1000BASE-T, auto-negotiation, auto-MDI/MDIX
Data Rate		10/100/1000Mbps
LED		System: SYS PWR x 1 (green) PoE Failure x 1 (red) Fan Failure x 1 (red) Per PoE Port: PoE-in-use x 1 (green) Management port: 1000 (green), 10/100 (orange)
Network Cable		10BASE-T: 4-pair UTP Cat5 up to 100m (328ft) 100BASE-TX: 4-pair UTP Cat5 up to 100m (328ft) 1000BASE-T: 4-pair UTP Cat5e/6 up to 100m (328ft) EIA/TIA- 568 100-ohm STP (100m)
Power Requirements		100-240V AC, 50/60 Hz, 4A
Power Consumption		250 watts (max.)
Ventilation		Fan x 2
Dimensions (W x D x H)		440 x 300 x 44mm
<b>Power over Ethernet</b>		
PoE Power Supply Type		Mid-span
PoE Power Output		Per port DC 52V 30.8/15.4 watts
Power Pin Assignment		4/5(-), 7/8(+)
PoE Power Budget		220 watts
Number of 802.3af PDs (Class 0, 1, 2, 3) can be powered		12
Number of 802.3at PDs (Class 1, 2, 3) can be powered		12
Number of 802.3at PDs (Class 0, 4) can be powered		7
<b>Management</b>		
Management Interface		Web, PLANET Smart Discovery Lite
PoE Management		Power limit by consumption and classification PoE admin mode Per port power schedule Per port power enable/disable Power feeding priority Over temperature protection Current per port usage and status Total power consumption
Management Feature		Setup of system/management functions Web firmware upgrade SNMP trap for alarm notification of events
<b>Standards Conformance</b>		
Regulatory Compliance		FCC Part 15 Class A, CE
Standards Compliance		IEEE 802.3 10BASE-T Ethernet IEEE 802.3u 100BASE-TX Fast Ethernet IEEE 802.3ab 1000BASE-T Gigabit Ethernet IEEE 802.3at Power over Ethernet Plus IEEE 802.3af Power over Ethernet RFC 768: UDP RFC 791: IP RFC 2068 HTTP RFC 1157: SNMP v1 RFC 1902: SNMP v2c RFC 5424: Syslog
<b>Environments</b>		
Operating		Temperature: 0 ~ 50 degrees C Relative Humidity: 5 ~ 90% (non-condensing)
Storage		Temperature: -10 ~ 70 degrees C Relative Humidity: 5 ~ 90% (non-condensing)

## Ordering Information

POE-1200G	12-Port Gigabit IEEE 802.3at PoE+ Managed Injector Hub (220 watts)
-----------	--

## Related PoE Products

POE-2400G	24-Port Gigabit IEEE 802.3at PoE+ Managed Injector Hub (440 watts)
HPOE-1200G	12-Port Gigabit IEEE 802.3at PoE+ Managed Injector Hub (360 watts)
HPOE-2400G	24-Port Gigabit IEEE 802.3at PoE+ Managed Injector Hub (720 watts)
ICA-2250VT	Industrial PoE Plus Outdoor IR IP Camera
ICA-2500	5 Mega-pixel PoE Box IP Camera
ICA-3250V	Full HD Outdoor IR PoE IP Camera
ICA-3350P	3 Mega-pixel Remote Focus Bullet IR IP Camera
ICA-E3550V	5 Mega-pixel Bullet IR PoE IP Camera with Extended Support
ICA-4200V	Full HD 20M IR Vari-focal Dome IP Camera
ICA-4500V	5 Mega-pixel 20M IR Vari-focal Dome IP Camera
ICA-5250	Full HD Ultra-mini Vandal Dome
ICA-HM351	2 Mega-pixel 35M IR Outdoor Box PoE IP Camera
ICA-HM620	2 Mega-pixel PoE Plus Speed Dome Internet Camera
POE-152S	IEEE 802.3af Power over Ethernet Splitter
POE-162S	IEEE 802.3at Gigabit High Power over Ethernet Splitter
POE-E101	IEEE 802.3af Power over Ethernet Extender
POE-E201	IEEE 802.3at Power over Ethernet Extender
WNAP-C3220	802.11n Wireless Ceiling-mount PoE Access Point
WNAP-W2200	802.11n 300Mbps In-Wall Access Point w/USB Charger (EU Type)
WDAP-1750AC	1750Mbps 802.11ac Dual Band Wall-mount Enterprise Wireless Access Point
WDAP-C7200AC	1200Mbps 802.11ac Dual Band Ceiling-mount Wireless Access Point
WDAP-W7200AC	1200Mbps 802.11ac Dual Band Wall-mount Wireless Access Point
WDAP-C7400	900Mbps Dual Band Ceiling-mount Wireless Access Point
ICF-1800	HD Touch Screen Android Multimedia Conferencing Phone
VIP-1010PT	High Definition PoE IP Phone (1-Line)
VIP-2020PT	Enterprise HD PoE IP Phone (2-Line)
VIP-5060PT	Professional HD PoE IP Phone (6-Line)