

# 2M HD IP BULLET CAMERA

BFN-A162-R



AUTO FOCUS

1080P



## FEATURES

### Real-time High Definition Bullet Camera

Using the state of art video compression engine, real time HD video streams of 1080p can be delivered for recording and monitoring.

### Triple codec, Simultaneous Multi Streaming

Triple H/W codec enables to transmit max 3 independent streams with different settings for different requirements. Therefore, it is possible to combine seamless remote video monitoring using H.264 with simultaneous transmission of high quality MPEG-4 to Network Video Recorder. Also, additional MJPEG can be delivered for Mobile devices such as Smart Phone or PDA.

### Local SD Card Backup

Some important sequence of still images can be stored in the SDHC memory card. This action can be configured to work with pre-post- alarm event or a given interval.

### Day & Night by ICR

For increased sensitivity of image sensor efficiently, a mechanical actuator can shift infrared (IR) Cut filter to disengage from image path automatically in the low light environment.

### POE

Built-in Power over Ethernet (IEEE 802.3af) makes installation easier, cheaper and more secure since Power over Ethernet can take advantage of UPS (uninterrupted power supply), which provides back-up power in case of a power failure.

### Bidirectional Audio

Provide two-way audio support. This enables remote users not only to view, but also to listen in on an area and communicate orders or requests to visitors or intruders.

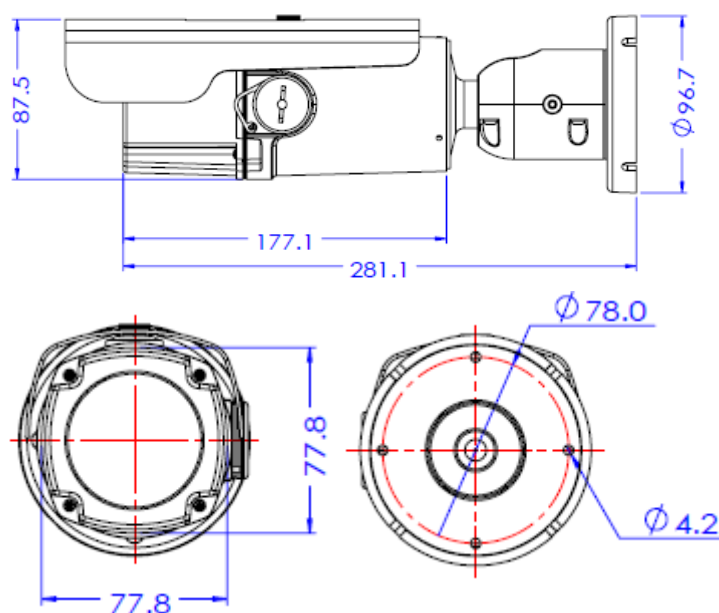
### Weather Proof Design

Due to IP66 environment protection as well as speed bullet camera will serve you all the time regardless of rain, snow and storm.

### Smart Focus (Motorized Focus)

Built-in auto-focus lens makes installation easier, installer don't need to adjust the focus manually.

### Dimensions



## Specification

CAMERA	
Image Device	1/2.8 " 2.0M CMOS
Total Pixels	2000(H)X1241(V)
Effective Pixels	Approx. 2 Mega pixels
Aspect Ratio	HD: 16:9 SD: 4:3
Focal Length	DC Vari-focal 3.5-16mm, F1.2, Auto Focus
Horizontal angle	80.8°(W) ~ 22.1°(T)
MIN. Illumination	COLOR : 0.1Lux @ F1.2, 30IRE B/W : 0.00Lux @ IR LED ON
IR LED	42pcs IR LED (Distance : 20m)
Day & Night	Auto / Day / Night(ICR)
Focus	Auto/Manual
DNR	OFF/LOW/MIDDLE/HIGH
Shutter Speed	1/30sec ~ 1/60000sec 1/25sec ~ 1/60000sec
DSS	X2~X8
AGC	MAX 41dB
White Balance	Auto/Auto-Ext/Indoor/Outdoor/ One-push Mode/Manual
BLC	OFF/WDR/BLC/HLM

GENERAL	
Camera Posture	3 Axis (Pan/Tilt/Rotation)
Digital In/Out	1 Alarm Sensor In / 1 Out
Video Out	BNC: VBS 1.0 Vp-p
Power	DC 12V/AC24V 10W POE IEEE 802.3af
Approvals	FCC, CE, IP68, ROHS
Housing	Weather proof/Vandal Proof Structure Color: Dark Gray
Material	Body: Aluminum Die-casting
Dimension	Net (W x H) 281.1 x 87.5
Weight	Net: 2.5 Kg, Package: 3 Kg
Operating Temp.	-20°C ~ 50°C

NETWORK		
OS	Embedded Linux	
Video Compression	Triple Codec,H.264/MPEG4/MJPEG	
Video Streaming	Multi Streaming CBR/VBR (Controllable frame rate and Bandwidth)	
Resolution	H.264 : 1080p/720p/D1/CIF MJPEG : 1080P/720p/D1/CIF/QCIF MPEG-4 : 720p/D1/CIF	
Frame Rate	Max. 30 /25 fps for 1080P/720P/D1/CIF/QCIF	
Audio Compression	Two way, G.711 PCM. μ-law 64kbps 8kHz	
Local Storage	SDHC memory card (card is not included)	
Motion detection	Notification: FTP, e-mail, Alarm out, JPEG Recording on SD	
Alarm	Pre-Post Alarm	
Max No. of Clients	10	
Protocols Support	IPv4	ONVIF, TCP/IP, UDP/IP, RTP(UDP), RTSP, NTP, HTTP,HTTPS, SSL, DNS, DDNS, DHCP, FTP, SMTP, ICMP, SNMPv1/v2c/v3(MIB-2)
	IPv6	TCP/IP, HTTP, HTTPS, DHCP
	DDNS	Proprietary: NET4C Public DDNS services Support: www.dyndns.com, www.no-ip.com
	Security	HTTPS(SSL), Digest Authentication(ID/PW)
OS Supported	Windows 7, Vista, XP, 2000	

### < Optional Accessories >

Pole Mount (RP07)



Junction Box (BJC01)

