

SN-IPV54/14UDN(III)

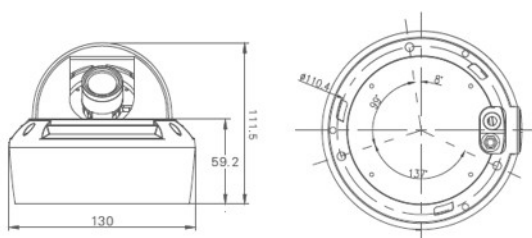
1080P Vandal Network Dome



Key features

- 1/2.9" Progressive Scan CMOS
- VF Lens 2.8-12mm
- Full HD 1080P
- Multiple Streams
- Low bitrate ,Excellent low light performance
- 3D DNR,dWDR,ICR
- Support ROI,Corridormode,HLC

Dimension



Accessories



SN-CBK629A SN-CBK633 SN-CBK623 SN-CBK624



SN-CBK627B SN-CBK625 SN-CBK626 SN-CBK633B

Specifications

CAMERA	
Image Sensor	1/2.9" Progressive Scan CMOS
Min. illumination	Color: 0.01Lux@(F1.2,AGC ON);B&W 0.001Lux@(AGC ON)
Day & Night	ICR
Shutter Speed	1/5-1/20000
Auto Iris	Default Fixed, Auto Iris Optional
Wide Dynamic Range	dWDR
Digital Noise Reduction	2D/3D
Lens	2.8-12mm Lens
FOV	100.3° ~ 33.2°
IR LED	N/A
IR Range	N/A
IMAGE	
Video Compression	H.264 High/Main/Baseline Profile, MJPEG
Bit Rate (CBR/VBR)	Main stream:500kb-12000kb ,Sub stream 100kb-6000kb
Audio Compression	G.711 ,RAW_PCM
Max. Resolution	1920x1080/30fps
Stream	Stream1 1920x1080/1280x720 Stream 2 D1 to QVGA
Image Setting	Rotate Mode ,Saturation, Brightness, Contrast, Sharpness
HLC	Yes
9:16 Corridor mode	Yes
ROI	Yes
Defog	Yes
NETWORK	
Network Protocols:	IPv4,802.1x,HTTP,HTTPS,TCP/IP,UDP/IP,RTSP,DHCP,NTP, RTCP/RTP, PPPoE, SMTP, DNS, UPnP, FTP, ICMP ,IGMP, Unicast and Multicast
Alarm Trigger	Motion Detection, Network disconnect, Disk alarm, I/O alarm
RTSP Video	Standard RFC2326, Support QuickTime / VLC Player.
Security	User security authentication, Reset, Hardware Watch Dog
Web Language	English, Chinese, Polish, Italian, Portuguese, Spanish, Russian, French, Czech, Hungarian (Sunell Brand)
System Compatibility	Onvif
Interface	
Ethernet	1 Ethernet (10/100 Base-T) RJ-45 Connector
Audio I/O	1ch Audio In,1ch Audio Out
Alarm I/O	1ch Alarm In,1ch Alarm Out
RS485	N/A
BNC Output	Yes
Reset Button	Yes
Edge Storage	Micro SD/SDHC slot ,Max 32GB
GENERAL	
Power Supply	DC12V/POE
Power Consumption	5W(MAX)
Operating Temperature	Starting Temperature: -30°C ~ 60°C (-22°F ~ 140°F) Working Temperature: -40°C ~ 60°C (-40°F ~ 140°F)
Operating Humidity	0% - 90% RH
Ingress Protection	IP67,IK10
Approvals	CE / FCC
Product Dimensions	φ 130×112mm
Product Weight	900g