

SN-TPC4201AT/M(II)

Temperature Detection Thermal IP Camera



- Uncooled IRFPA Microbolometer
- Temperature detection
- Effective Pixels 400 × 300
- Sensitivity 50mK
- 8/25/50/75/100/150mm Motorized lens optional
- Infrared detection wavelength 8-14um
- Support 8 areas temperature Detection
- Support 17 color control
- Support DVE image Enhance
- Standalone operating

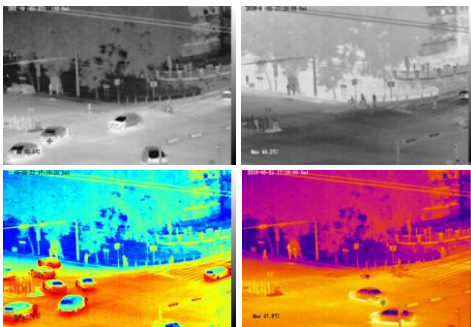
System Overview

Featuring a motorized lens box camera, this series provides an all-in-one solution that is especially beneficial for long distance video surveillance in outdoor applications. Together with Thermal technology, the camera's long range capabilities are able to be utilized even at night.

Functions

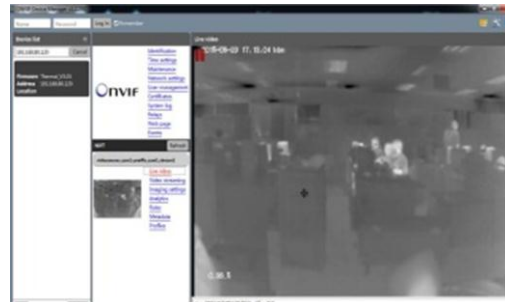
Image Color Modes

White hot/black hot/iron bow/rainbow up to 17 modes



Compatibility

ONVIF Compatible, also provide CGI and SDK for integration



Temperature Detection

Maximum temperature measure from area, up to 8 areas



IVS Security

Video Analytics with Perimeter ,Single Virtual Fences ,Double Virtual Fences ,Object Left ,Object Removed



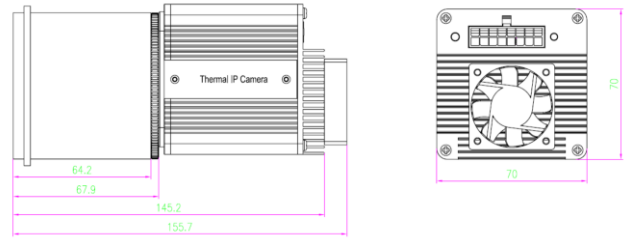
Technical Specification

Thermal Camera						
Detector Type	Uncooled IRFPA Microbolometer					
Effective Pixels	400(H) × 300(V)					
Pixel Size	20um					
Thermal Sensitivity (NETD)	50mK @F1.0, 300K					
Spectral Range	8~14um					
Image Setting	Polarity LUT/ DVE/ Mirror/ FCC/ /3D DNR Brightness/Contrast/ ROI					
Color Palettes	Black-Heat /White-Heat/Rainbow/Iron-Red up to 17 modes					
Thermal Lens						
Lens Type	Fixed					
Focus Control	Motorized Focus					
Focal Length	8mm	25mm	50mm	75mm	100mm	150mm
F No.	F1.0	F1.0	F1.0	F1.0	F1.0	F1.0
Angle of View	H: 43.6° V:18°	H: 14.6° V:11°	H: 7.3° V:5.5°	H: 4.8° V:3.6°	H: 3.6° V:2.7°	H: 2.4° V:1.8°
Temperature Detect Distance Fire(0.8m*0.8m)	160m	500m	1000m	1500m	2000m	3000m
Recognition Distance Man(1.8m*0.5m)	120m	375m	750m	1120m	1500m	2250m
Recognition Distance Vehicle(2.3m*2.3m)	260m	830m	1660m	2500m	3300m	5000m
Video and Audio						
Compression	H.265, H.264, MJPEG					
Frame Rate	Main Stream: D1 @25/30fps					
	Sub Stream: CIF @25/30fps					
Bit Rate Control	CBR/VBR					
Bit Rate	100Kbps~6Mbps					
Region of Interest	Off / On (8 Zone, Rectangle)					
Electronic Image Stabilization(EIS)	N/A					
Digital Zoom	16x					
Mirror	Support					
Defog	Support					
Motion Detection	Support					
Privacy Masking	Off / On (4 Area, Rectangle)					
DVE Image Enhance	Support					
Audio Compression	G.711, AMR, RAW_PCM (Optional)					
Intelligence						
Intelligent Functions	Motion detection, Disk alarm, I/O alarm, Temperature alarm					
IVS	Perimeter ,Single Virtual Fences ,Double Virtual Fences ,Object Left ,Object Removed					

Temperature Detection	
Temperature Detection	Point detection, Area detection
Temperature Alarm	Over temperature alarm, Temperature difference alarm
Precision	±2℃ / ±2%
Detection Area	Support 8 areas (8 target)
Response Time	≤30ms
Effective temperature working environment	-10℃ ~ 50℃ (14°F ~ 122°F)
Theory of temperature measurement range	-30℃ ~ 200℃ (-22°F ~ 392°F)
Temperature display mode	Temperature target >5℃, Display absolute temperature value; Temperature target ≤5℃, Display relative temperature value (temperature difference DEV = highest value - average)
Network	
Ethernet	RJ-45 (10/100Base-T)
Protocols:	IPv4/IPv6 ,HTTP,RTSP/RTP/RTCP, TCP/UDP, DHCP, DNS, PPPOE, SMTP, SIP ,802.1x
Interoperability	ONVIF, CGI
Streaming Method	Unicast
Max. User Access	10 Users
Edge Storage	NAS Local PC for instant recording Mirco SD card 128GB
Web Viewer	<IE11, Chrome, Firefox
Web Language	English, Chinese, Polish, Italian, Portuguese, Spanish, Russian, French, Czech, Hungarian
Interface	
Ethernet	1 Ethernet (10/100 Base-T) RJ-45 Connector
Audio Interface	1ch Audio In,1ch Audio Out
Alarm	2ch Alarm In,2ch Alarm Out
RS485	Support
BNC Output	Support
Reset Button	Support
General	
Power Supply	DC12V ±10%
Power Consumption	Max 5W
Operating Temperature	-10℃ ~ 55℃ (14°F ~ 131°F)
Storage Conditions	0~ 90% RH
Certifications	CE /FCC
Ingress Protection	N/A
Casing	Metal
Dimensions	70×70×189mm
Net Weight	700g (Contains 50 mm lens)

Ordering Information		
Type Part	Number	Description
SN-TPC4201AT/M(II)	SN-TPC4201AT/M8(II)	Thermal: 400×300 8mm Motorized lens
	SN-TPC4201AT/M25(II)	Thermal: 400×300 25mm Motorized lens
	SN-TPC4201ATMF50(II)	Thermal: 400×300 50mm Motorized lens
	SN-TPC4201AT/M75(II)	Thermal: 400×300 75mm Motorized lens
	SN-TPC4201AT/M100(II)	Thermal: 400×300 100mm Motorized lens
	SN-TPC4201AT/M150(II)	Thermal: 400×300 150mm Motorized lens

Dimensions(mm)



Accessories

Optional: N/A