

IB8381/81-E

Bullet Network Camera



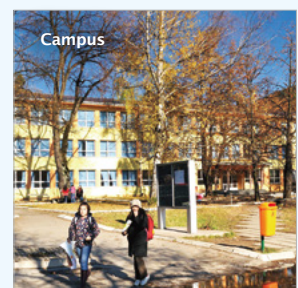
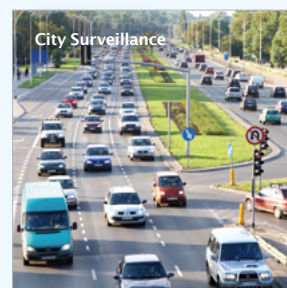
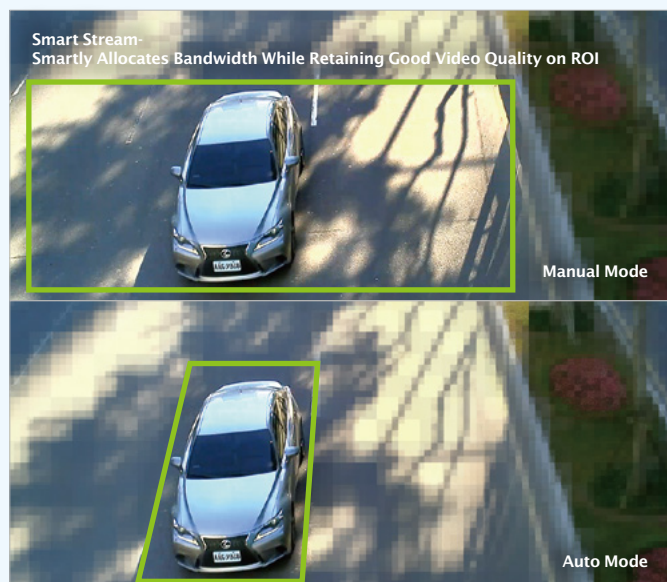
5MP · 30M IR · Smart Focus System · IP67 · Cable Management · Extreme Weather Support with PoE

VIVOTEK IB8381/81-E is a brand-new professional outdoor bullet network camera offering up to 25 fps @ 5-Megapixel or 30 fps @ 1080p resolution with superb image quality. Equipped with new image technology, IB8381/81-E provides the excellent image quality and finer detail than ever before. The powerful 3D Noise Reduction technology and Smart Stream technology enables the IB8381/81-E to optimize resolution on a desired object or area to maximize efficiency of bandwidth usage.

The IP67-rated housing is also designed to ensure the camera body withstands rain and dust and guarantees smooth operation under a multitude of harsh weather conditions. Additionally, the wide operating temperature range further enhances the IB8381-E's performance and reliability in extremely cold and warm weather even with PoE.

Key Features

- 5-Megapixel CMOS Sensor
- 25 fps @ 2560x1920 (5MP)
- 3 ~ 9 mm Vari-focal, P-iris, Remote Focus Lens
- Removable IR-cut Filter for Day & Night Function
- Built-in IR Illuminators, Effective up to 30 Meters
- Real-time H.264, and MJPEG Compression
- Two-way Audio
- WDR Enhancement for Unparalleled Visibility in Extremely Bright and Dark Environments
- Smart Focus System for Remote and Precise Focus Adjustment
- Weather-proof IP67-rated Housing
- Built-in 802.3at Compliant PoE
- Built-in SD/SDHC/SDXC Card Slot for On-board Storage
- Mounting Bracket with Cable Management for Protected Installation
- Extreme Weather Support with PoE (IB8381-E)
- Smart IR Technology to Avoid Overexposure

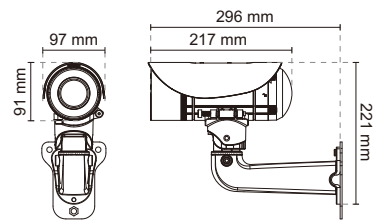


Technical Specifications

Model	IB8381 IB8381-E
System Information	
CPU	Multimedia SoC (System-on-Chip)
Flash	256 MB
RAM	512 MB
Camera Features	
Image Sensor	1/3.2" Progressive CMOS
Maximum Resolution	2560x1920
Lens Type	Vari-focal
Focal Length	f = 3~ 9 mm
Aperture	F1.2 ~ F2.3
Auto-iris	P-iris
Field of View	31° ~ 67° (Horizontal) 24° ~ 50° (Vertical) 40° ~ 90° (Diagonal)
Shutter Time	1/5 sec. to 1/32,000 sec.
WDR Technology	WDR Enhanced
Day/Night	Removable IR-cut filter for day & night function
Minimum Illumination	0.22 Lux @ F1.2 (Color) 0.001 Lux @ F1.2 (B/W)
Pan/tilt/zoom Functionalities	ePTZ: 48x digital zoom (4x on IE plug-in, 12x built in)
IR Illuminators	Built-in IR illuminators, effective up to 30 meters with Smart IR
On-board Storage	SD/SDHC/SDXC card slot
Video	
Compression	H.264, MJPEG
Maximum Frame Rate	H.264: 25 fps at 2560x1920 30 fps at 1920x1080 MJPEG: 25 fps at 2560x1920 30 fps at 1920x1080
Maximum Streams	3 simultaneous streams
S/N Ratio	Above 53 dB
Dynamic Range	69 dB
Video Streaming	Adjustable resolution, quality and bitrate
Image Settings	Adjustable image size, quality and bit rate, Time stamp, text overlay, flip & mirror, Configurable brightness, contrast, saturation, sharpness, white balance, exposure control, gain, backlight compensation, privacy masks, Scheduled profile settings, Seamless recording, smart stream, 3D Noise Reduction
Audio	
Audio Capability	Audio input /output (full duplex)
Compression	AAC, G.711, G.726
Interface	External microphone input Audio output
Network	
Users	Live viewing for up to 10 clients
Protocols	IPv4, IPv6, TCP/IP, HTTP, HTTPS, UPnP, RTSP/RTP/RTCP, IGMP, SMTP, FTP, DHCP, NTP, DNS, DDNS, PPPoE, CoS, QoS, SNMP, 802.1X, UDP, ICMP
Interface	10Base-T/100 BaseTX Ethernet (RJ-45)
ONVIF	Supported, specification available at www.onvif.org
Intelligent Video	
Video Motion Detection	Triple-window video motion detection

Alarm and Event	
Alarm Triggers	Video motion detection, manual trigger, digital input, periodical trigger, system boot, recording notification, camera tampering detection, audio detection
Alarm Events	Event notification using digital output, HTTP, SMTP, FTP and NAS server, SD Card File upload via HTTP, SMTP, FTP, NAS server and SD card
General	
Smart Focus System	Remote focus
Connectors	RJ-45 cable connector for Network/PoE connection Audio input Audio output AC 24V power input DC 12V power input Digital input*1 Digital output*1 Analog video output
LED Indicator	System power and status indicator
Power Input	24V AC 12V DC IEEE 802.3at PoE
Power Consumption	IB8381 Max. 10.86W (DC 12V) Max. 12.13W (AC 24V) Max. 12.36W (PoE) IB8381-E Max. 22.4W (DC 12V) Max. 24.6W (AC 24V) Max. 23.46W (PoE)
Dimensions	Ø: 91 mm x 221 mm
Weight	Net: 1348g
Casing	Weather-proof IP67-rated housing
Safety Certifications	CE, LVD, FCC Class A, VCCI, C-Tick, UL
Operating Temperature	IB8381: Starting Temperature: -10°C ~ 50°C (14°F ~ 122°F) Working Temperature: -20°C ~ 50°C (-4°F ~ 122°F) IB8381-E: Starting Temperature: -40°C ~ 50°C (-40°F ~ 122°F) Working Temperature: -50°C ~ 50°C (-58°F ~ 122°F)
Warranty	36 months
System Requirements	
Operating System	Microsoft Windows 7/8/Vista/XP/2000
Web Browser	Mozilla Firefox 7~10 (Streaming only) Internet Explorer 7.x, 8.x, 9.x, 10.x, 11.x
Other Players	VLC: 1.1.11 or above Quicktime: 7 or above
Included Accessories	
CD	User's manual, quick installation guide, Installation Wizard 2, ST7501 32-channel recording software
Others	Quick installation guide, warranty card, sun shield, wall mount bracket, waterproof RJ45 Ethernet enclosure, alignment sticker / desiccant bag, waterproof connector, screw

Dimensions



Compatible Accessories

Mounting Kits



AM-311
Pole Mount
Adaptor



AM-411
Corner Mount
Adaptor



AM-711
Junction Box

All specifications are subject to change without notice. Copyright © VIVOTEK INC. All rights reserved.

Distributed by:



VIVOTEK INC.
6F, No.192, Lien-Cheng Rd., Chung-Ho,
New Taipei City, 235, Taiwan, R.O.C.
T: +886-2-82455282 F: +886-2-82455532
E: sales@vivotek.com

VIVOTEK USA
2050 Ringwood Avenue,
San Jose, CA 95131
T: 408-773-8686 F: 408-773-8298
E: salesusa@vivotek.com

VIVOTEK Europe
Randstad 22-133, 1316BW Almere,
The Netherlands
T: +31(0)36-5298-434
E: saleseurope@vivotek.com

Ver 1.9