

# DGD8132



## 8-BAY PENTABRID 32CH XVR

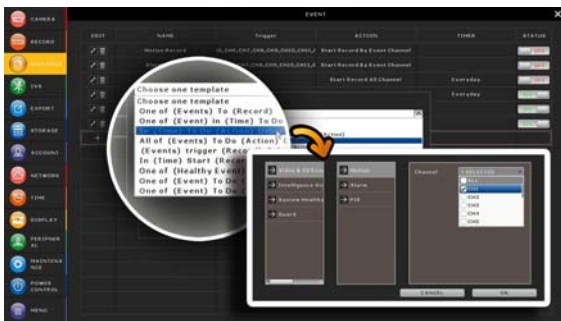
### ▶ FEATURES

#### Free P2P Cloud EaZy Networking

- ❖ Cloud EaZy Networking available to connect this device to Internet automatically in three steps with our free mobile app, EagleEyes.
- ❖ The “Buddy” feature to share the device access permission to other people.
- ❖ Device login / out notifications reported.

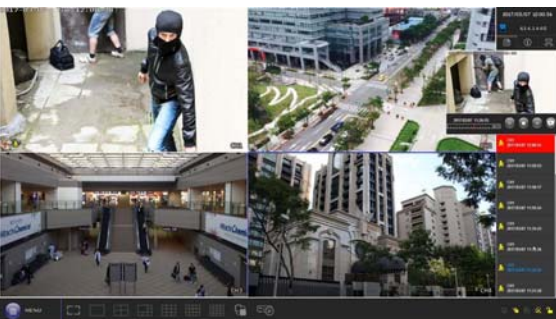
#### Alarm Scenario Customization

- ❖ “Scenario” is a new feature allowing you to customize a series of actions which will be run automatically after the specified event occurs. There are several scenario templates for you to choose when and what to do after a specific event occurs.



#### Event Pop-up / Preview

- ❖ All events are listed on the right panel with corresponding event icons for you to quickly recognize the event type. The most current one will flash to catch your attention. Click one event and you’re able to preview the footage with pre-alarm images.

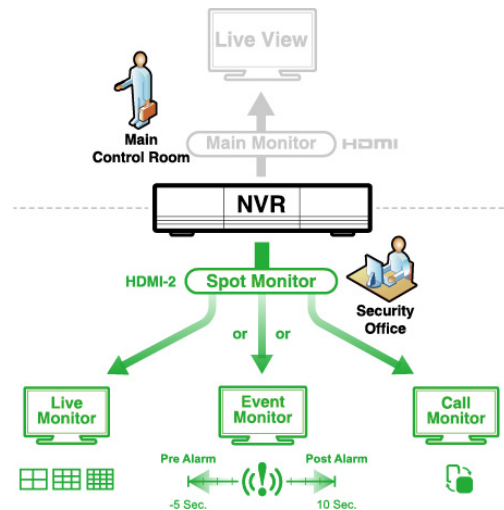


#### Pentabrid Video Input

- ❖ Supports IP / Analog HD / TVI / CVI / 960H video input
- ❖ Up to 1080P recording

#### Spot Monitor

- ❖ In addition to the main display via the HDMI output, you can assign a secondary display to show live view, call monitor or event monitor.



#### Push Status -

#### Active Event Notification with EagleEyes App

- ❖ Push Status to send instant notifications for system events, such as video loss or HDD data removal.

#### 8-bay Storage Capacity

- ❖ To solve the large storage requirement of 1080P recording, this recorder supports up to 8 hard disks to keep high quality video data without overwriting data so quickly. A power-saving mechanism is also adopted to reduce power consumption.

## ▶ SPECIFICATIONS

| ▼ Video                        |             |   |
|--------------------------------|-------------|---|
| Video System                   |             | NTSC / PAL (auto detection)   |
| Video Compression Format       |             | H.264   |
| Video Signal                   |             | 32 channels (TVI / CVI / Analog HD / 960H) within which IP channels are up to 2 channels. |
| Video Input                    |             | 32 channels (Composite video signal 1 Vp-p 75Ω BNC)                                       |
| Video Input Interface          | Analog Mode | Composite video signal 1 Vp-p 75Ω BNC   |
|                                | IP Mode     | Ethernet, 10/100 Base-T   |
| Video Output                   | BNC         | YES (Spot Monitor supported)  |
|                                | VGA         | YES (1080P display / Spot Monitor supported)  |
|                                | HDMI        | HDMI-1 (4K2K display) / HDMI-2 (1080P display / Spot Monitor supported)                   |
| Video Resolution               | Analog Mode | 1080P / 720P / QHD / 960H / Frame / Field / CIF   |
|                                | IP Mode     | 1920 x 1080 / 1280 x 720 / 640 x 480 / 320 x 240  |
| ▼ Record & Backup              |             |   |
| Max. Recording Rate            | Analog Mode | Up to 384 IPS @ 1920 x 1080   |
|                                | IP Mode     | Up to 60 IPS @ 1920 x 1080 (2 channels)   |
| Recording Mode                 |             | Manual / Timer / Motion / Alarm / Remote  |
| Pre-alarm Recording            |             | YES   |
| Playback Channel               |             | 16CH  |
| Quick Search                   |             | Time / Motion / Alarm search mode   |
| Backup Device                  |             | USB 3.0 drive / Network   |
| Regular Backup                 |             | YES (USB hard drive or FTP)   |
| ▼ Audio                        |             |   |
| Audio Input                    |             | 16  |
| Audio Output (Mono)            |             | 2   |
| ▼ External I/O                 |             |   |
| RS485                          |             | YES   |
| Alarm Input                    |             | 8   |
| Alarm Output                   |             | 1   |
| Alarm Scenario                 |             | YES   |
| ▼ General                      |             |   |
| Hard Disk Storage              |             | 14TB SATA HDD x 8   |
| SATA Interface                 |             | YES   |
| Image Quality Setting          |             | SUPER BEST / BEST / HIGH / NORMAL   |
| USB Mouse Control              |             | YES   |
| Motion Detection Area          |             | 16 × 12 grids per channel   |
| Motion Detection Sensitivity   |             | 3 adjustable parameters for accurate detection  |
| Event Notification             |             | Push Status / FTP / E-Mail  |
| Picture Zoom                   |             | 2X digital zoom   |
| PTZ Control                    |             | YES   |
| Key Lock (Password Protection) |             | YES   |
| User Level                     |             | 4 user levels for different access privilege  |
| Video Loss Detection           |             | YES   |
| Camera Title                   |             | Supports up to 25 letters   |
| Video Adjustable               |             | Hue / Saturation / Contrast / Brightness  |
| Date Display Format            |             | YY/MM/DD, DD/MM/YY & MM/DD/YY   |
| Daylight Saving                |             | YES   |
| Power Source (±10%)            |             | 19V/4.7A  |
| Operating Temperature          |             | 10°C ~ 40°C (50°F ~104°F)   |
| Operating Humidity             |             | 10% ~ 85%   |

## ▶ SPECIFICATIONS

| ▼ General                           |   |
|-------------------------------------|---|
| Dimensions (mm)**                   | 358 x 267 x 152   |
| Net Weight (kg)                     | 5.9   |
| ▼ Network                           |   |
| Ethernet                            | 1000 Base-T. Supports remote control and live view via Ethernet   |
| Network Protocol                    | TCP/IP, PPPOE, DHCP and DDNS  |
| ▼ Remote Surveillance from PC       |   |
| Compatible Operating System         | Windows & MAC   |
| Compatible Program                  | Web Browser: <ul style="list-style-type: none"> <li>■ Windows Edge, Internet Explorer (Windows 8 and later version)</li> <li>■ Safari, Google Chrome &amp; Mozilla Firefox (Windows Vista and later version)</li> </ul> |
|                                     | CMS Lite:   |
| Max. online users                   | 36  |
| Web Transmitting Compression Format | H.264   |
| Remote Live Display                 | 9CH (Selectable)  |
| Network Live Audio                  | YES   |
| Remote Event Download & Playback    | YES   |
| ▼ Mobile Surveillance               |   |
| App                                 | EagleEyes   |
| Compatible Devices                  | iOS & Android devices   |
| Push Status                         | YES   |
| ▼ Others                            |   |
| EaZy Networking                     | YES   |
| Alarm Scenario Setup                | YES   |
| Spot Monitor Setup                  | Call Monitor / Event Monitor / Live Monitor (HDMI-2, VGA & Composite Selectable)  |
| DCCS Support                        | YES   |
| AVTECH Free DDNS service            | YES   |
| Privacy Mask                        | YES   |
| Multiplex Operation                 | Live display / record / playback / backup / network operations  |
| System Recovery                     | System auto recovery after power failure  |
| Optional Peripherals                | HDMI Matrix (HDM02) / USB Joystick (AVX102)   |

\* The specifications are subject to change without notice.  
 \*\* Dimensional tolerance: ±5mm

## ▶ REAR PANEL

