

## AXIS P33 Network Camera Series – Indoor models

Fixed domes for any environment with remote focus and zoom.



- > Exceptional image quality including 5MP and HDTV
- > WDR with dynamic capture
- > Lightfinder technology
- > Remote focus and zoom
- > P-Iris control
- > IK10 impact resistance

AXIS P33 Network Cameras constitute a series of indoor and outdoor-ready fixed domes. These cameras are ideal for unobtrusive video surveillance, day and night, in exposed areas such as airports, subways, retail stores, bank buildings, schools and university campuses. This document covers the indoor models of AXIS P33 Series.

AXIS P33 Series offers models with exceptional image quality from SVGA resolution up to 5 megapixel, including SMPTE standard compliant HDTV 720p and 1080p video. AXIS P33 Series provides multiple, individually configurable H.264 and Motion JPEG video streams.

The SVGA and HDTV 720p models support Axis' Lightfinder technology, which make these cameras extremely sensitive to low light. AXIS P3384-V that additionally supports wide dynamic range (WDR) with 'dynamic capture', provides outstanding video quality in the most demanding conditions with strong variations in light. The 5 megapixel model, AXIS P3367-V, can cover a large area with exceptional detail and light sensitivity. All AXIS P33 models support P-Iris control for optimal image clarity.

The remote focus capability allows for convenient installation, eliminating hands-on focusing at the camera. The remote zoom and pixel counter features ensure that the camera's angle of view is optimized for the area to be monitored and the required pixel resolution.

AXIS P33 Series provides multiple, individually configurable H.264 and Motion JPEG video streams. All AXIS P33 cameras offer digital pan/tilt/zoom and the 3-megapixel and 5-megapixel models additionally provide multi-view streaming.

AXIS P33 Series has low, environmental-friendly power consumption, supplied by standard Power over Ethernet (IEEE 802.3af).



# Fixed domes designed for efficient installation

Indoor models of AXIS P33 Series are the perfect choice for a wide range of demanding video applications. AXIS P33 Network Cameras are designed for professional video surveillance with easy and reliable installation in focus.

## Lightfinder technology

The SVGA and HDTV 720p models of AXIS P33 Series incorporate Axis' unique Lightfinder technology. The outstanding light sensitivity, with maintained colors even in very poor lighting conditions, is obtained by a combination of Axis' expertise in image processing, system-on-chip development and selection of the best optical components.

For more on Lightfinder technology, go to:  
[www.axis.com/corporate/corp/tech\\_papers.htm](http://www.axis.com/corporate/corp/tech_papers.htm)

## Wide dynamic range – dynamic capture

AXIS P3384-V that supports WDR with 'dynamic capture' is ideal for surveillance in areas with strong variations in light, for instance close to large windows and entrances, where the sunlight creates both very bright zones and dark shadows. AXIS P3384-V enables easy and clear identification of people and objects both in bright and dark areas.

## P-Iris control

AXIS P33 Series features the advanced precise iris control that comprises a special P-Iris lens, together with dedicated software in the camera, to set the best iris position for optimal depth of field, resolution, image contrast and clarity. Good depth of field implies that objects at different distances from the camera are in focus simultaneously.

For more on P-Iris and iris control, go to:  
[www.axis.com/corporate/corp/tech\\_papers.htm](http://www.axis.com/corporate/corp/tech_papers.htm)

## Easy installation with remote focus and zoom

AXIS P33 Network Cameras offer unique installation capabilities including remote focus and zoom. The remote focus feature enables convenient focusing over the network, eliminating the need for hands-on fine-tuning at the camera. The remote zoom functionality ensures that the camera's angle of view is optimized for the area to be monitored.

## Unique pixel counter feature

The unique pixel counter offered in Axis cameras allows the installer to easily verify that the camera installation fulfills any regulatory or specific customer requirements on pixel resolution, ensuring, for instance, that there are enough pixels in the human face for facial identification.



## Mounting options

AXIS P33 Series offers a wide range of optional kits for indoor installations, for example, for mounting on a wall, pole or corner. The IP51-rated drop ceiling mount kit protects the camera from condensation and dust that may exist in the plenum space above the drop ceiling. They include a smoked transparent cover as an alternative to the clear cover, for additional flexibility.



# Technical specifications – AXIS P33 Network Camera Series, indoor models

Camera	
<b>Indoor models</b>	<p>AXIS P3353: SVGA, Lightfinder, tamper resistance</p> <p>AXIS P3354: 1 MP, Lightfinder, tamper resistance</p> <p>AXIS P3363-V: SVGA, Lightfinder, vandal resistance, audio, I/O ports</p> <p>AXIS P3364-V: 1 MP, Lightfinder, vandal resistance, audio, I/O ports</p> <p>6 mm and 12 mm as suffix refers to lens model</p> <p>AXIS P3384-V: 1 MP, WDR – dynamic capture, Lightfinder, vandal resistance, audio, I/O ports</p> <p>AXIS P3346: 3 MP, multi-view, audio, I/O ports</p> <p>AXIS P3346-V: 3 MP, multi-view, vandal resistance, audio, I/O ports</p> <p>AXIS P3367-V: 5 MP, multi-view, vandal resistance, audio, I/O ports</p> <p><i>Note: AXIS P3301-V and AXIS P3304-V are not part of AXIS P33 Series</i></p>
<b>Image sensor</b>	<p>AXIS P3353/P3363-V: Progressive scan RGB CMOS 1/3"</p> <p>AXIS P3354/P3364-V: Progressive scan RGB CMOS 1/3"</p> <p>AXIS P3384-V: Progressive scan RGB CMOS 1/3"</p> <p>AXIS P3346/-V: Progressive scan RGB CMOS 1/3" (effective)</p> <p>AXIS P3367-V: Progressive scan RGB CMOS 1/3.2"</p>
<b>Lens</b>	<p>Varifocal, remote focus and zoom, IR corrected, P-Iris control, megapixel resolution</p> <p>AXIS P3353/P3354/P3363-V/P3364-V 6 mm: 2.5-6 mm, 105° - 49° view*, F1.2</p> <p>AXIS P3353/P3354/P3363-V/P3364-V 12 mm: 3.3-12 mm, 82° - 24° view*, F1.4</p> <p>AXIS P3384-V: 3-9 mm, 84° - 30° view*, F1.2</p> <p>AXIS P3346/-V: 3-9 mm, 84° - 30° view*, F1.2</p> <p>AXIS P3367-V: 3-9 mm, 84° - 30° view*, F1.2</p> <p>*horizontal angle of view</p>
<b>Day and night</b>	Automatically removable infrared-cut filter
<b>Minimum illumination</b>	<p>AXIS P3353/P3354/P3363-V/P3364-V 6 mm: Color: 0.1 lux, F1.2, B/W: 0.02 lux, F1.2</p> <p>AXIS P3353/P3354/P3363-V/P3364-V 12 mm: Color: 0.15 lux, F1.4, B/W: 0.03 lux, F1.4</p> <p>AXIS P3384-V: Color: 0.5 lux, F1.2, B/W: 0.08 lux, F1.2 with dynamic capture</p> <p>Color: 0.15 lux, F1.2, B/W: 0.03 lux, F1.2 with Lightfinder</p> <p>AXIS P3346/-V: Color: 0.5 lux, F1.2, B/W: 0.08 lux, F1.2</p> <p>AXIS P3367-V: Color: 0.2 lux, B/W: 0.04 lux, F1.2</p>
<b>Shutter time</b>	<p>AXIS P3353/P3354/P3363-V/P3364-V: 1/24500 s to 2 s with power line frequency 50 Hz, 1/29500 s to 2 s with power line frequency 60 Hz</p> <p>AXIS P3384-V: Dynamic capture: 1/192 s to 1/37 s with power line frequency 50 Hz, 1/231 s to 1/44 s with power line frequency 60 Hz; Lightfinder: 1/24500 s to 2 s with power line frequency 50 Hz, 1/29500 s to 2 s with power line frequency 60 Hz</p> <p>AXIS P3346/-V: 1/35500 s to 1/6 s</p> <p>AXIS P3367-V: 1/28000 s to 2 s</p>
<b>Camera angle adjustment</b>	<p>AXIS P3353/P3354/P3363-V/P3364-V: Pan 360°, tilt 170°, rotation 340°</p> <p>AXIS P3346/P3384-V/P3346-V/P3367-V: Pan 360°, tilt 160°, rotation 340°</p>
Video	
<b>Video compression</b>	H.264 Baseline and Main Profile (MPEG-4 Part 10/AVC) Motion JPEG
<b>Resolutions</b>	<p>AXIS P3353/P3363-V: 800x600 (SVGA) to 160x90</p> <p>AXIS P3354/P3364-V: 1280x960* (approx. 1.3 MP) to 160x120</p> <p>AXIS P3384-V: 1280x960* (approx. 1.3 MP) to 160x120</p> <p>AXIS P3346/-V: 2048x1536 (3 MP) to 160x90</p> <p>AXIS P3367-V: 2592x1944 (5 MP) to 160x90</p> <p>*1400x1050 (1.4 MP) scaled resolution available via VAPIX®</p>
<b>Frame rate H.264/ Motion JPEG</b>	<p>AXIS P3353/P3354/P3363-V/P3364-V/P3384-V: 25 fps with power line frequency 50 Hz, 30 fps with power line frequency 60 Hz</p> <p>AXIS P3346/-V: 3 MP capture mode: 20 fps in all resolutions, HDTV 1080p (1920x1080) and 2 MP 4:3 (1600x1200) capture modes: 30 fps in all resolutions</p> <p>AXIS P3367-V: 5 MP capture mode: 12 fps in all resolutions; and capable of all AXIS P3346/-V capture modes</p>
<b>Video streaming</b>	Multiple, individually configurable streams in H.264 and Motion JPEG Controllable frame rate and bandwidth VBR/CBR H.264
<b>Multi-view streaming</b>	<p>AXIS P3346/P3346-V/P3367-V: Up to 8 individually cropped out view areas</p> <p>AXIS P3346/-V: When streaming 4 view areas and 1 overview in VGA resolution, the frame rate is 20 fps per stream (3 MP capture mode)</p> <p>AXIS P3367-V: When streaming 4 view areas and 1 overview in VGA resolution, the frame rate is 12 fps per stream (5 MP capture mode) or 20 fps per stream (3 MP capture mode)</p>
<b>Pan/Tilt/Zoom</b>	Digital PTZ, preset positions, guard tour
<b>Image settings</b>	<p>Compression, color, brightness, sharpness, contrast, white balance, exposure control, exposure zones, backlight compensation, WDR - dynamic contrast, fine tuning of low light behavior</p> <p>Rotation: 0°, 90°, 180°, 270°, including Corridor Format</p> <p>Text and image overlay, privacy mask, mirroring of images</p> <p>AXIS P3384-V: WDR - dynamic capture: Up to 120 dB (0.5 - 500,000 lux) depending on scene</p>
Audio (AXIS P3363-V/P3364-V/P3384-V/P3346/-V/P3367-V)	
<b>Audio streaming</b>	Two-way
<b>Audio compression</b>	AAC LC 8/16 kHz, G.711 PCM 8 kHz, G.726 ADPCM 8 kHz Configurable bit rate
<b>Audio input/output</b>	External microphone input or line input, line output Built-in microphone (can be disabled)
Network	
<b>Security</b>	Password protection, IP address filtering, digest authentication, user access log, IEEE 802.1X** network access control, HTTPS** encryption
<b>Supported protocols</b>	IPv4/v6, HTTP, HTTPS**, SSL/TLS**, QoS Layer 3 DiffServ, FTP, CIFS/SMB, SMTP, Bonjour, UPnP™, SNMPv1/v2c/v3(MIB-II), DNS, DynDNS, NTP, RTSP, RTP, TCP, UDP, IGMP, RTPC, ICMP, DHCP, ARP, SOCKS
System integration	
<b>Application Programming Interface</b>	Open API for software integration, including the ONVIF specification available at <a href="http://www.onvif.org">www.onvif.org</a> , as well as VAPIX® and AXIS Camera Application Platform from Axis Communications, specifications available at <a href="http://www.axis.com">www.axis.com</a> Support for AXIS Video Hosting System (AVHS) with One-Click Camera connection
<b>Intelligent video</b>	Video motion detection, active tampering alarm Support for AXIS Camera Application Platform enabling installation of additional applications AXIS P3363-V/P3364-V/P3384-V/P3346/-V/P3367-V: Audio detection
<b>Event triggers</b>	Intelligent video, edge storage events AXIS P3363-V/P3364-V/P3384-V/P3346/-V/P3367-V: External input
<b>Event actions</b>	File upload: FTP, HTTP, network share and email Notification: email, HTTP and TCP Video recording to edge storage Pre- and post-alarm video buffering PTZ preset, guard tour AXIS P3363-V/P3364-V/P3384-V/P3346/-V/P3367-V: External output activation, audio recording to edge storage, play audio clip
<b>Data streaming</b>	Event data
<b>Built-in installation aids</b>	Remote zoom, remote focus, pixel counter

\*\* This product includes software developed by the OpenSSL Project for use in the OpenSSL Toolkit. ([www.openssl.org](http://www.openssl.org))

## Technical Specifications (cont.) – AXIS P33 Network Camera Series, indoor models

General	
<b>Casing</b>	Polycarbonate transparent cover Aluminum inner camera module with encapsulated electronics Color: White NCS S 1002-B AXIS P3353/P3354/P3346: Tamper-resistant polycarbonate casing AXIS P3363-V/P3364-V/P3384-V/P3346-V/P3367-V: IK10 impact-resistant casing with aluminum base
<b>Memory</b>	256 MB RAM, 128 MB Flash AXIS P3367-V: 512 MB RAM, 128 MB Flash
<b>Power</b>	Power over Ethernet IEEE 802.3af AXIS P3353/P3354/P3363-V/P3364-V: Class 2; max 5.9 W AXIS P3384-V: Class 2; max 5.9 W AXIS P3346-V: Class 2; max 6.4 W AXIS P3367-V: Class 2; max 6.2 W
<b>Connectors</b>	RJ-45 10BASE-T/100BASE-TX PoE AXIS P3363-V/P3364-V/P3384-V/P3346-V/P3367-V: Terminal block for 1 alarm input and 1 output, 3.5 mic/line in, 3.5 mm line out
<b>Edge storage</b>	SD/SDHC memory card slot (card not included) Support for recording to network share (Network Attached Storage or file server)
<b>Operating conditions</b>	0 °C to 50 °C (32 °F to 122 °F) Humidity 10 - 85% RH (non-condensing)
<b>Approvals</b>	EN 55022:2006+A1 Class B, EN 55024, EN 61000-6-1, EN 61000-6-2, EN/IEC/UL 60950-1, FCC Part 15, Subpart B Class B, ICES-003 Class B digital, VCCI, ITE, C-tick AS/NZS CISPR 22, KN 22, KN 24, AS/NZS CISPR 22, IEC 60068-2-1, IEC 60068-2-2, IEC 60068-2-14, IEC 60068-2-27, IEC 60068-2-64, IEC 60068-2-78 AXIS P3363-V/P3364-V/P3384-V/P3346-V/P3367-V: IEC 62262 IK10
<b>Included accessories</b>	Installation Guide, Installation and Management Software CD, Windows decoder 1-user license, smoked transparent cover AXIS P3363-V/P3364-V/P3384-V/P3346-V/P3367-V: Connector kit

More information is available at [www.axis.com](http://www.axis.com)

## Dimensions and weight – AXIS P33 Network Camera Series, indoor models



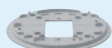
## Accessories – AXIS P33 Network Camera Series, indoor models

### Optional accessories for indoor models

IP51-rated drop-ceiling mount kit with transparent or smoked cover



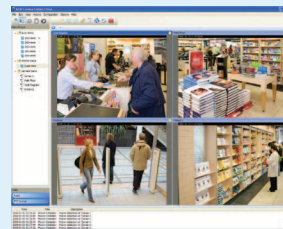
Mounting bracket



Pendant adapter kit    AXIS T91A Brackets



### Video management software



AXIS Camera Companion (included),  
AXIS Camera Station and video management software from Axis' Application Development Partners (not included). For more information, see [www.axis.com/products/video/software](http://www.axis.com/products/video/software)