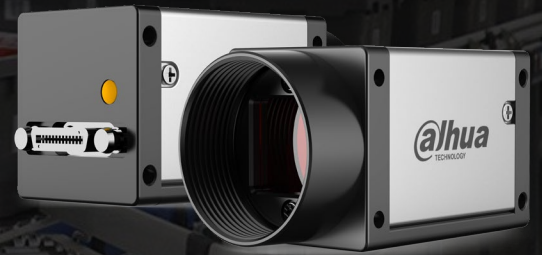


DH-MV-A7500MK402E

- CameraLink interface, support Base mode
- Support Software trigger/Hardware trigger/Free run mode
- Support multiple image data format output, ROI, mirroring, etc
- Conform to CameraLink V2.0 protocol and GenICam standard
- Conform to GenCP V1.1 Standard Communication Protocol
- Support for PoCL
- CE,FCC,UL,RoHS certification



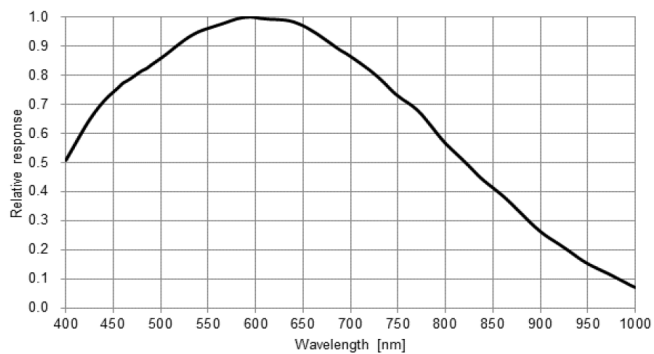
Specification

Model	Sensor	Sensor type	Shutter	Resolution	Frame rate (fps)	Bit depth	Interface	Mono/Color	Pixel size (μm)	Sensor size
DH-MV-A7040MK402E	IMX264	CMOS	Global	2448x2048	37.2	10	CameraLink	Mono	3.45 x 3.45	2/3"

Model	DH-MV-A7500MK402E
Effective Pixels	5MP
SNR	>38dB
Dynamic Range	70dB
GPIO	CameraLink interface: camera control and image transmission; support base mode
Colck	32M/48M/64M/80M
Image Format	Mono: Mono8/10
Binning	--
Gain	0dB~15.56dB
Gamma	--
Exposure Time	16μS~1S
Trigger Mode	Software trigger/Hardware trigger/Free run mode
Image Buffer	--
User Setting	Support two sets of user-defined configurations
Dimensions	29mmx29mmx43.8mm(not including lens mount and rear case connector)
Weight	80g
Power Supply	PoCL
Power Consumption	≈2.3W
Lens Mount	C
Temperature	Storage temperature:-30° C~ + 80° C; Operation temperature:-30° C~+50° C

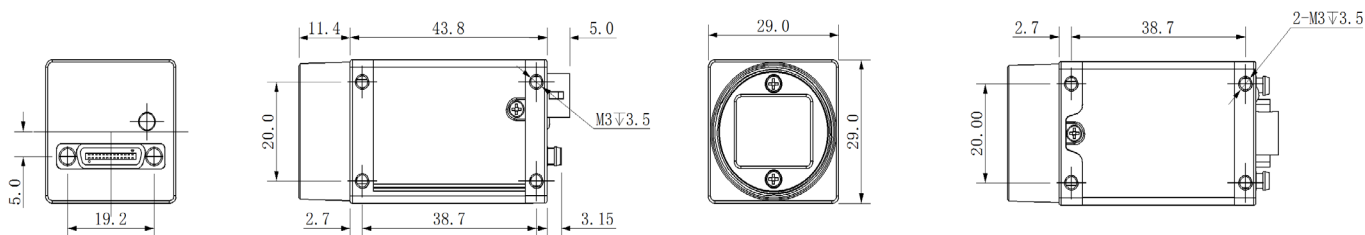
Spectrogram

A7500MK402E

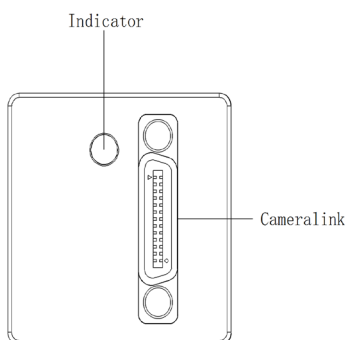


Quantum Efficiency Curve for Mono Sensor

Dimensions



IO Interface Instruction



Pin	Signal	Description
No I/O interface		