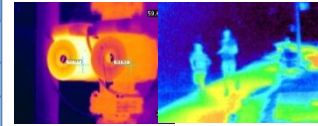


Dynacom WQT420A Thermal IP Camera



- Uncooled IRFPA Microbolometer, Temperature detection
- Resolution 420x315, Sensitivity 50mK, 8/15/25/35/50 mm lens optional
- Infrared detection wavelength 8-14um, Color mode Black-Heat /White-Heat/Rainbow/Iron-Red, Support DVE image Enhance

CAMERA	
Detector Type	Long-Life,Uncooled IRFPA Microbolometer
Array Format	420x315
Pixel Pitch	25 μm
Sensitivity	50mK
Spectral Range	8 to 14μm
Temperature Detection	Yes
Lens	F1.0, 08mm,15mm,25mm,35mm,50mm optional
Focus	Manually
FOV	75.4o×54.4o/39.7o×29.8o/23.7o×17.9o/17o×12.8o/11.9o×9o
Detect Distance(Vehicle)	350/600/1000/1500/2000 m
Detect Distance(Human 1.8m)	150/350/500/800/1100 m
Recognize Distance(Vehicle)	200/350/600/850/1200 m
Recognize Distance(Human 1.8m)	100/200/300/450/650 m
Temperature Detect Distance (Vehicle)	100/200/350/500/650 m
Temperature Detect Distance (Human)	50/100/180/250/320 m
IMAGE	
Video Compression	H.264 High/Main/Baseline Profile, MJPEG
Bit Rate (CBR/VBR)	50kb-4000kb
Audio Compression	G.711 ,RAW_PCM
Max.Resolution	D1/30fps
Stream	D1 ,CIF
Image Color Mode	Black-Heat /White-Heat/Rainbow/Iron-Red
DVE Image Enhance	Yes ,Level 0 -6
3D Noise Reduce	Yes
Image Correction	Auto/Manual/External
Image Overturn	Horizontal /Vertical /Horizontal+Vertical/
NETWORK	
Network Protocols:	IPv4/v6,RTSP/RTP/RTCP,TCP/UDP,HTTP,DHCP,DNS,FTP,DDNS,PPPOE,SMTP,SIP
Alarm Trigger	Temperature Alarm, Motion Detection, Network disconnect, Disk alarm,I/O alarm
RTSP Video	Standard RFC2326, Support QuickTime / VLC Player.
Security	User security authentication, Reset, Hardware WatchDog
Web Language	English, Chines
System Compatibility	Onvif
INTERFACE	
Ethernet	1 Ethernet (10/100 Base-T) RJ-45 Connector
Audio I/O	Optional 1ch Audio In,1ch Audio Out
Alarm I/O	Optional 1ch Alarm In,1ch Alarm Out
RS485	N/A
BNC Output	Yes
Reset Button	Yes
Edge Storage	Micro SD/SDHC slot ,Max 32GB
GENERAL	
Power Supply	DC12V/POE
Power Consumption	5W(MAX)
OperatingTemperature	-10°C~ +50°C
Operating Humidity	0% - 90% RH
Ingress Protection	N/A
Approvals	CE / FCC
Product Dimensions	72×70×189mm
Product Weight	700g



Dimension

