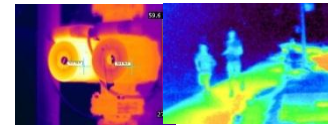




Dynacom WQT423PT Thermal IP Camera

- Uncooled IRFPA Microbolometer, Temperature detection
- Resolution 420x315, Sensitivity 50mK
- 25/35/50 mm lens optional, Vision Optical Zoom 30X

CAMERA	
Detector Type	Long-Life,Uncooled IRFPA Microbolometer
Array Format	420x315
Pixel Pitch	25 μm
Sensitivity	50mK
Spectral Range	8 to 14μm
Temperature Detection	Yes
Vision Lens	30X Optical Zoom
Thermal Lens	25mm,35mm,50mm optional
Focus	Manually
FOV	23.7o×17.9o/17o×12.8o/11.9o×9o
Detect Distance(Vehicle)	1000/1500/2000 m
Detect Distance(Human 1.8m)	500/800/1100 m
Recognize Distance(Vehicle)	600/850/1200 m
Recognize Distance(Human 1.8m)	300/450/650 m
Temperature Detect Distance(Vehicle)	350/500/650 m
Temperature Detect Distance(Human)	180/250/320 m
IMAGE	
Video Compression	H.264 High/Main/Baseline Profile, MJPEG
Bit Rate (CBR/VBR)	50kb-4000kb ,500kb-12Mb
Audio Compression	G.711 ,RAW_PCM
Thermal Resolution	D1/30fps
Vision Resolution	1080P/30fps
Stream	D1 ,CIF ;1080P
Image Color Mode	Black-Heat /White-Heat/Rainbow/Iron-Red
DVE Image Enhance	Yes ,Level 0 -6
3D Noise Reduce	Yes
Image Correction	Auto/Manual/External
Image Overturn	Horizontal /Vertical /Horizontal+Vertical/
NETWORK	
Network Protocols:	IPv4/v6,RTSP/RTP/RTCP,TCP/UDP,HTTP,DHCP,DNS,FTP,DDNS,PPPOE,SMTP,SIP
Alarm Trigger	Temperature Alarm,Motion Detection,Network disconnect,Disk alarm,I/O alarm
RTSP Video	Standard RFC2326, Support QuickTime / VLC Player.
Security	User security authentication, Reset, Hardware WatchDog
Web Language	English, Chines
System Compatibility	Onvif
INTERFACE	
Ethernet	1 Ethernet (10/100 Base-T) RJ-45 Connector
Audio I/O	1ch Audio In,1ch Audio Out
Alarm I/O	1ch Alarm In,1ch Alarm Out
RS485	Yes
BNC Output	Yes
Reset Button	Yes
Edge Storage	Micro SD/SDHC slot ,Max 32GB
GENERAL	
Power Supply	DC9-DC36V ,AC24V optional
Power Consumption	50W(MAX)
Operating Temperature / Humidity	-20°C~+55°C / 0% - 90% RH
Ingress Protection	IP66
Approvals	CE / FCC
Product Dimensions	210x246x375mm
Product Weight	10kg



Accessories



Vehicle Bracket



Wall Mounting Bracket