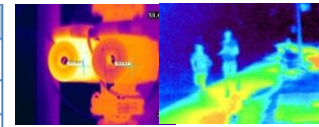


Dynacom WQT430PT Pan Tilt Thermal IP Camera

- Dual windows Thermal PT with Temperature Detective
- Motorized fixed lens
- 100mm and fixed lens 25mm lens

CAMERA	
Image Sensor	1/2.8" Progressive Scan CMOS
Min. illumination	Color 0.01Lux; B&W 0.001Lux; IR ON 0 Lux
Day & Night	ICR, Auto/Color/B&W
Shutter Speed	1/1-1/10000s
Auto Iris	Auto/Manual
Wide Dynamic Range	dWDR
Digital Noise Reduction	2D/3D, Auto/Manual
Lens	12X Module , 4.7 ~ 56.4mm
Digital Zoom	16X
FOV	69.7° ~ 7.56°
IR LED	6 pcs
Pan/Tilt	Pan 0-360°continuously ,Tilt -10-90°
Pan/Tilt Speed	Pan 0.01-180°/s ,Tilt 0.01-90°/s ,Preset Speed 90°/s
3D Position	YES
Coordinate Display	YES
Preset/Tour/Scan/Track	300/12/12/6
IMAGE	
Video Compression	H.264 High/Main/Baseline Profile, MJPEG
Bit Rate (CBR/VBR)	100kb-12000kb
Audio Compression	G.711 ,RAW_PCM
Max.Resolution	2048(H) ×1536(V)/25fps
Stream	Stream1 2048(H)×1536(V) Stream2 1080P/720P/D1/CIF/QCIF/VGA/QVGA/640x360
Image Setting	Rotate Mode,Saturation,Brightness,Contrast,Sharpness
HLC	YES
ROI	YES
Defog	YES
NETWORK	
Network Protocols	HTTP, HTTPS, TCP/IP, UDP/IP, RTSP, DHCP, NTP, PPPoE, Unicast and Multicast supported.
Alarm Trigger	Motion, Instrusion, Line Crossing, Tamper,Network disconnect,Disk alarm, I/O alarm
RTSP Video	Standard RFC2326, Support QuickTime / VLC Player.
Security	User security authentication, Reset, Hardware WatchDog
Web Language	English, Chinese, Polish, Italian, Portuguese, Spanish
System Compatibility	Onvif,CGI
INTERFACE	
Ethernet	I1 Ethernet (10/100 Base-T) RJ-45 Connector
Audio I/O	Optional 1ch Audio In,1ch Audio Out
Alarm I/O	Optional 2ch Alarm In,1ch Alarm Out
RS485	N/A
BNC Output	N/A
Reset Button	YES(Built-In)
Edge Storage	Micro SD/SDHC/SDXC slot(Built-in),Max 64GB
GENERAL	
Power Supply	Standard DC12V/POE+, optional AC24V
Power Consumption	MAX 25W
OperatingTemperature	-40°C ~ +60°C
Operating Humidity	0% - 90% RH
Protection	IP66,TVS4000V
Approvals	CE / FCC
Product Dimensions	321.3x222.3x146.6mm
Product Weight	1500g



Accessories



Vehicle Bracket



Wall Mounting Bracket