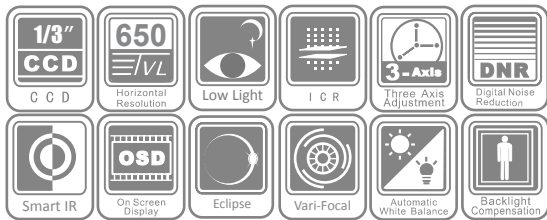


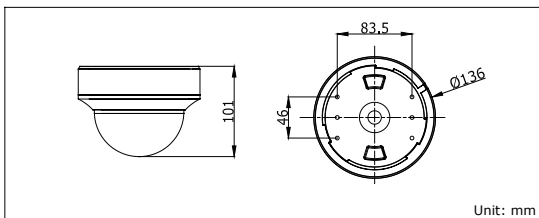
DS-2CC5191/5193/5195/5197P(N)-VF Vari-focal Dome Camera



Key features

- 1/3" Sony CCD
- 650 TVL high resolution
- Super low illumination
- True day / night
- Smart IR
- 3-axis adjustment

Dimensions



Specifications

| Camera | DS-2CC5191P(N)-VF | DS-2CC5193P(N)-VF | DS-2CC5195P(N)-VF | DS-2CC5197P(N)-VF |
|-----------------------|---|--|--|--|
| Image sensor | 1/3" SONY EXview HAD CCD II | 1/3" SONY EXView HAD CCD II | 1/3" SONY EXView HAD CCD II | 1/3" SONY Super HAD CCD II |
| Signal system | PAL / NTSC | | | |
| Effective pixels | PAL: 976 (H) × 582 (V), NTSC: 976 (H) × 494 (V) | | | |
| Min. illumination | Color: 0.001 Lux @ (F1.2, AGC ON), 0.0001 Lux @ (F1.2, AGC ON, sensitivity × 512) B/W: 0.0001 Lux @ (F1.2, AGC ON) Color: 0.0014 Lux @ (F1.4, AGC ON) B/W: 0.00014 Lux @ (F1.4, AGC ON) | Color: 0.01 Lux @ (F1.2, AGC ON), 0.0001 Lux @ (F1.2, AGC ON, sensitivity × 512) B/W: 0.001 Lux @ (F1.2, AGC ON), 0.00001 Lux @ (F1.2, AGC ON, sensitivity × 512) Color: 0.014 Lux @ (F1.4, AGC ON), 0.00014 Lux @ (F1.4, AGC ON, sensitivity × 512) B/W: 0.0014 Lux @ (F1.4, AGC ON), 0.000014 Lux @ (F1.4, AGC ON, sensitivity × 512) | Color: 0.001 Lux @ (F1.2, AGC ON), 0.0001 Lux @ (F1.2, AGC ON, sensitivity × 512) B/W: 0.0001 Lux @ (F1.2, AGC ON), 0.00001 Lux @ (F1.2, AGC ON, sensitivity × 512) Color: 0.0014 Lux @ (F1.4, AGC ON), 0.000014 Lux @ (F1.4, AGC ON, sensitivity × 512) B/W: 0.00014 Lux @ (F1.4, AGC ON), 0.0000014 Lux @ (F1.4, AGC ON, sensitivity × 512) | Color: 0.001 Lux @ (F1.2, AGC ON), 0.0001 Lux @ (F1.2, AGC ON, sensitivity × 512) B/W: 0.0001 Lux @ (F1.2, AGC ON), 0.00001 Lux @ (F1.2, AGC ON, sensitivity × 512) Color: 0.0014 Lux @ (F1.4, AGC ON), 0.000014 Lux @ (F1.4, AGC ON, sensitivity × 512) B/W: 0.00014 Lux @ (F1.4, AGC ON), 0.0000014 Lux @ (F1.4, AGC ON, sensitivity × 512) |
| Shutter time | PAL: 1/50 s to 1/100,000 s NTSC: 1/60 s to 1/100,000 s | | | |
| Lens | 2.8 - 12 mm @ F1.4 Angle of view: 92° - 27.2° | | | |
| Lens mount | φ14 | | | |
| Auto Iris | DC drive | | | |
| Angle adjustment | Pan: 0 - 355°, Tilt: 0 - 180°, Rotation: 0 - 355° | | | |
| Day & night | IR cut filter with auto switch | | | |
| Horizontal resolution | 650 TVL (Color), 700 TVL (B/W) | | | |
| Wide Dynamic Range | Digital | Digital | Digital | 75 dB |
| Synchronization | Internal / power synchronization | | | |
| Video output | 1Vp-p composite output (75 Ω/BNC) Test monitor out [1Vp-p composite output (75 Ω/BNC), device line] | | | |
| S/N ratio | More than 62 dB | | | |
| Menu | | | | |
| Camera ID | On / Off (52 letters, position adjustable) | On / Off (16 letters, position adjustable) | On / Off (16 letters, position adjustable) | On / Off (16 letters, position adjustable) |
| Auto Gain | -- | Low / Middle / High / Off | | |
| D/N Mode | Auto / Day / Night | | | |
| White Balance | ATW/Push/User1/User2/ Anti CR/Manual/Push lock | Auto trace WB1/Auto trace WB2/Manual/Auto Control | | |
| Private Mask | On / Off, maximum 8 zones | On / Off, maximum 12 zones | | |
| Motion Detection | On / Off | On / Off | On / Off | On / Off |
| BLC | BLC/HLC/Off | Area/Value/Off | | |
| WDR | -- | Value/ Contrast / Return | | |
| Anti-Flicker | -- | On/Off | | |
| Language | English/Chinese | | | |
| Function | ATR, HLC, DNR, Sharpness, Brightness, Contrast, Hue, Gain, Mirror, Defect Pixel Correction | SMART IR, Digital Wide Dynamic Range, Eclipse, Digital Noise Reduction, Sharpness, Brightness, Saturation, Resolution, Electronic image stabilization, Digital Zoom, Mirror, Defect Pixel Correction | SMART IR, Eclipse, Digital Noise Reduction, Sharpness, Brightness, Saturation, Resolution, Electronic image stabilization, Digital Zoom, Mirror, Defect Pixel Correction | |
| Scene | -- | Indoor Standard , Indoor Backlight , Outdoor, Low illumination , IR Standard , Customize | Indoor Standard , Indoor Backlight , Outdoor, Low illumination , Customize | |
| General | | | | |
| Operating conditions | -10°C ~ 60°C (14°F ~ 140°F) Humidity 90% or less (non-condensing) | | | |
| Power supply | 24 VAC ± 10%, 12 VDC ± 10% | | | |
| Power consumption | Max. 4 W (Max. 4.5 W with IR cut filter on) | | | |
| Dimensions | φ 136 × 101 mm (φ 5.35" × 3.98") | | | |
| Weight | 800 g (1.76 lbs) | | | |

Available models

DS-2CC5191P-VF, DS-2CC5191N-VF
 DS-2CC5193P-VF, DS-2CC5193N-VF
 DS-2CC5195P-VF, DS-2CC5195N-VF
 DS-2CC5197P-VF, DS-2CC5197N-VF