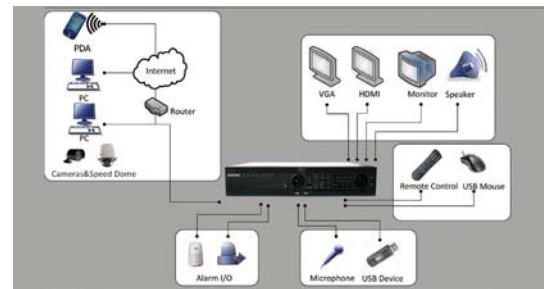


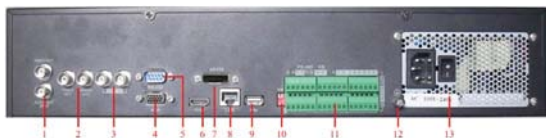
DS-9604/9608/9612/9616NI-RH High-end Embedded NVR



Key features

- Third-party network cameras supported
- Up to 1920×1080P resolution recording
- HDMI output at up to 1920×1080P resolution
- RAID0,1,5,10 supported
- 8 SATA interfaces
- HDD with hot-swap capability

Rear Panel of DS-9600NI-RH



1. Video out (spot), audio out (spot)
2. Video out, audio out
3. Line in
4. VGA output
5. RS-232 serial interface
6. HDMI output
7. eSATA interface
8. LAN (10/100/1000Mbps Self-adaptive UTP Ethernet interface)
9. USB interface
10. RS-485 matched resistance switch
11. RS-485 serial interface, RS485 keyboard port, alarm in, alarm out
12. GND
13. 100 ~ 240VAC Power Input

Specifications

	DS-9604NI-RH	DS-9608NI-RH	DS-9612NI-RH	DS-9616NI-RH
Video / Audio input				
IP video input	4-ch 4CIF /2-ch 720P /1-ch UXGA /1080P Real Time, or 2-ch UXGA /1080P not Real Time	8-ch 4CIF /4-ch 720P /2-ch UXGA /1080P Real Time, or 4-ch UXGA /1080P not Real Time	12-ch 4CIF /6-ch 720P /3-ch UXGA /1080P Real Time, or 6-ch UXGA /1080P not Real Time	16-ch 4CIF /8-ch 720P /4-ch UXGA /1080P Real Time, or 8-ch UXGA /1080P not Real Time
Voice talk input	2-ch, BNC (2.0 Vp-p, 1 kΩ)			
Video / Audio output				
CVBS output	2-ch, BNC (1.0 Vp-p, 75 Ω) Resolution: 704 × 576(PAL); 704 × 480(NTSC)			
HDMI output	1-ch, resolution: 1920 × 1080 /60Hz, 1280 × 1024 /60Hz, 1024 × 768 /60Hz			
VGA output	1-ch, resolution: 1280 × 1024 /60Hz, 1024 × 768 /70Hz, 1024 × 768 /60Hz			
Audio output	2-ch, BNC(Linear Electrical Level, 600 Ω)			
Synchronous playback	4-ch	8-ch	12-ch	16-ch
Hard disk				
SATA	8 SATA interfaces			
eSATA	1 eSATA interface			
Capacity	Up to 2TB capacity for each disk			
Disk array				
Array type	RAID0, RAID1, RAID5, RAID10			
Number of array	8			
Number of virtual disk	8			
External interface				
Network interface	1RJ-45, 10/100/1000Mbps self-adaptive Ethernet interface			
Serial interface	1 RS-232 interface (for parameters configuration, maintenance , transparent channel); 1 RS-485 interface (for PTZ control); 1 RS-485 keyboard interface (for special keyboard control)			
USB interface	3, USB2.0			
Alarm in	16			
Alarm out	4			
General				
Power supply	100-240 VAC, 6.3A, 50-60Hz			
Consumption	≤ 70 W (without hard disk or DVD-R/W)			
Working temperature	-10°C ~ +55°C			
Working humidity	10% ~ 90%			
Dimensions (W x D x H)	450 × 470 × 90 mm			
Weight	≤ 8 kg (without hard disk or DVD-R/W)			