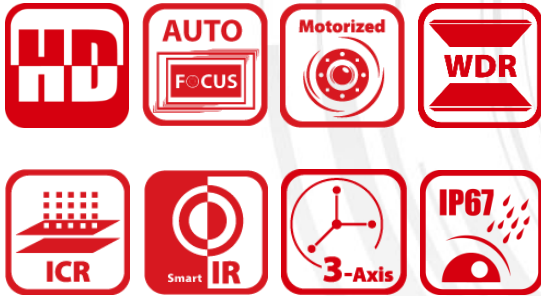


DS-2CE5AU7T-AVPIT3ZF 8 MP Dome Camera



Key Feature

- 8.29 MP high performance CMOS
- Auto focus
- 3840 × 2160 resolution
- 2.7 mm to 13.5 mm motorized varifocal lens
- EXIR 2.0, smart IR, up to 60 m IR distance
- OSD menu, 3D DNR, 130 dB true WDR
- 4 in 1 video output (switchable TVI/AHD/CVI/CVBS)
- IP67, IK10
- Up the coax (HIKVISION-C)



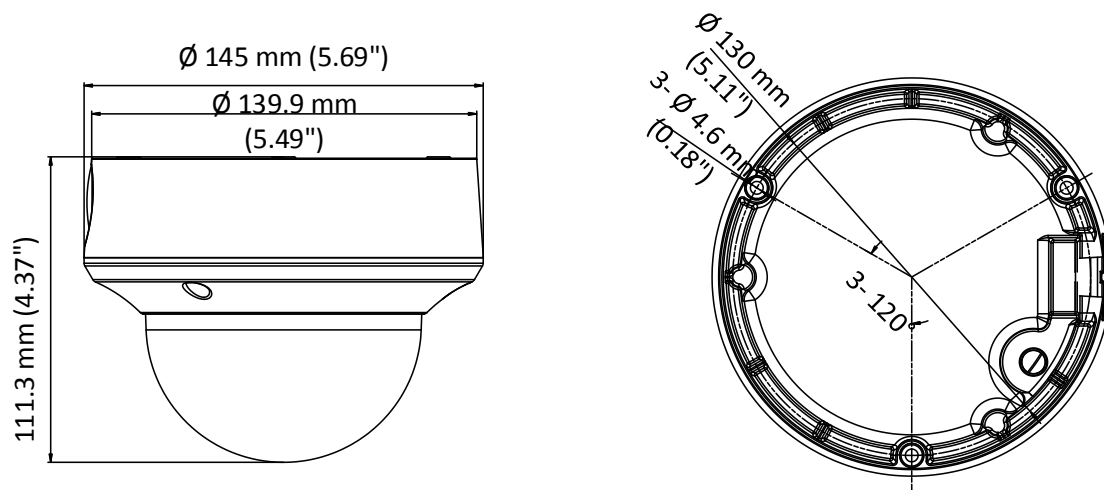
Specification

| Camera | |
|--------------------------|--|
| Image Sensor | 8.29 megapixel progressive scan CMOS |
| Signal System | PAL/NTSC |
| Frame Rate | TVI: 8MP@12.5fps, 8MP@15fps, 5MP@20fps, 4MP@25fps, 4MP@30fps, 2MP@25fps, 2MP@30fps CVI: 8MP@12.5fps, 8MP@15fps AHD: 8MP@12.5fps, 8MP@15fps CVBS: 960H P/N |
| Resolution | 3840 (H) × 2160 (V) |
| Min. Illumination | Color: 0.003 Lux @ (F1.2, AGC ON), 0 Lux with IR |
| Shutter Time | PAL: 1/12.5 s to 1/50, 000 s NTSC: 1/15 s to 1/50, 000 s |
| Lens | 2.7 mm to 13.5 mm motorized varifocal lens |
| Horizontal Field of View | 108.1° to 45.6° |
| Lens Mount | Φ14 |
| Day & Night | IR cut filter |
| Angle Adjustment | Pan: 0° to 355°, Tilt: 0° to 75°, Rotate: 0° to 355° |
| Synchronization | Internal synchronization |
| WDR (Wide Dynamic Range) | ≥ 130 dB |
| Menu | |
| AGC | Yes |
| D/N Mode | Auto/Color/BW (Black and White) |
| White Balance | Auto/Manual |
| BLC | Yes |
| WDR | Yes |
| Functions | Brightness, Sharpness, 3D DNR, Mirror, Smart IR |
| Interface | |
| Video Output | 1 HD analog output |
| Switch Button | TVI/AHD/CVI/CVBS |
| General | |
| Operating Conditions | -40 °C to 60 °C (-40 °F to 140 °F), humidity: 90% or less (non-condensation) |
| Power Supply | 9.6 VDC to 14.4 VDC; 19.2 VAC to 28.8 VAC |
| Power Consumption | Max. 8.2 W |
| Protection Level | IP67, IK10 |
| Material | Metal |
| IR Range | Up to 60 m |
| Communication | Up the coax, Protocol: HIKVISION-C (TVI output) |
| Dimensions | Ø 145 mm × 111.3 mm (Ø 5.69" × 4.37") |
| Weight | Approx. 860 g (1.90lb.) |

Order Model

DS-2CE5AU7T-AVPIT3ZF

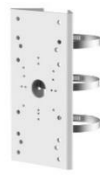
Dimension



Accessory



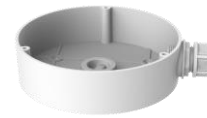
DS-1273ZJ-140-DM45
Wall Mount



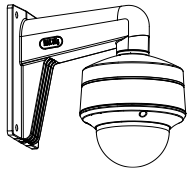
DS-1275ZJ-SUS
Vertical Pole Mount



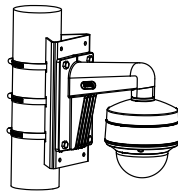
DS-1276ZJ-SUS
Corner Mount



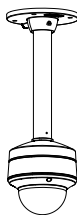
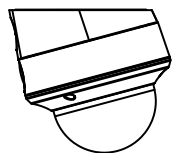
DS-1280ZJ-DM45
Junction Box



DS-1281ZJ-DM45
Inclined Ceiling Mount



DS-1271ZJ-140-DM45
Pendant Mount



Distributed by



HIKVISION®

Headquarters

No.555 Qianmo Road, Binjiang District,
Hangzhou 310051, China
T +86-571-8807-5998
overseasbusiness@hikvision.com

Hikvision USA
T +1-909-895-0400
sales.usa@hikvision.com

Hikvision Europe
T +31-23-55-42-770
info.eu@hikvision.com

Hikvision Middle East
T +971-4-8816086
salesme@hikvision.com

Hikvision Russia
T +7-495-669-67-99
saleru@hikvision.com

Hikvision India
T +91-22-28469900
sales@pramahikvision.com

Hikvision Italy
T +39-0438-6902
info.it@hikvision.com

Hikvision France
T +33(0)1-85-330-450
info.fr@hikvision.com

Hikvision Spain
T +34-91-737-16-55
info.es@hikvision.com

Hikvision Poland
T +48-22-460-01-50
poland@hikvision.com

Hikvision UK
T +01628-902140
support.uk@hikvision.com

Hikvision Singapore
T +65-6684-4718
sg@hikvision.com

Hikvision Oceania
T +61-2-8599-4233
salesau@hikvision.com

Hikvision Canada
T +1-909-895-0400
sales.usa@hikvision.com

Hikvision Korea
T +82-31-731-8841
sales.korea@hikvision.com

Hikvision Brazil
T +55 11 3318-0050
Latam.support@hikvision.com

Hikvision Africa
T +27 (10) 0351172
sale.africa@hikvision.com

Hikvision Hong Kong
T +852-2151-1761