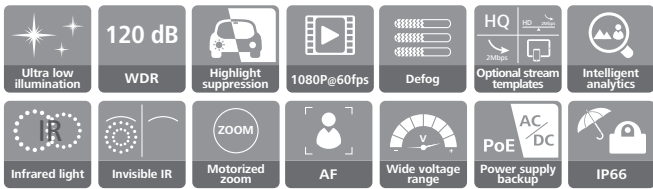


IPC6225-VRZ-SP

2MP Network IR Bullet Camera

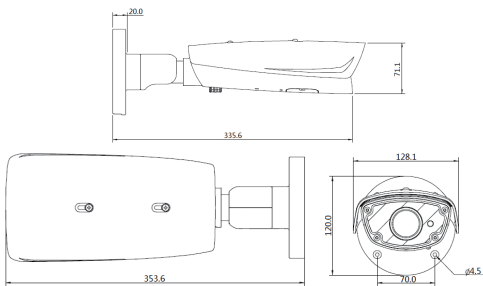


Features

- H.265, H.264 and MJPEG video compression standard
- Invisible IR
- Built-in motorized zoom and focus lens
- Effective pixels 1920x1080 at 60 fps
- Ultra WDR up to 120dB
- Highlight suppression
- Auto defogging
- Image stabilization
- Intelligent analytics
- DC/AC supply can be hot standby for PoE
- Ultra wide operating voltage range up to $\pm 25\%$
- Ultra wide operating temperature range: $-40\sim 60^{\circ}\text{C}$
- IP66 protection class

Dimension

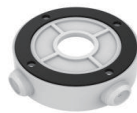
Unit: mm



Optional Accessories



Pole-mount bracket
DTS-11C



Connection box
ACC2501-HW

Specifications

Model Item	IPC6225-VRZ-SP
Camera	
Image sensor	1/2.8" 2.0 megapixel progressive scan CMOS
Effective pixels	1920(H)x1080(V)
Min. Illumination	Color: 0.008lux (F1.4, AGC ON) B/W : 0.002lux (F1.4, AGC ON), 0 lux with IR on
Day/Night mode	Auto/Color/Monochrome (removable infrared-cut filter)
Electronic shutter speed	1/100000s to 1s
White balance	Auto/Auto-track/Manual/OnePush, Scenarios mode: Indoor/Outdoor/Fixed sodium lamp/Fluorescent lamp 1/Fluorescent lamp 2/Incandescent lamp
Gain control	Automatic / Manual
Wide Dynamic Range	120dB
Backlight compensation	Supported
Highlight suppression	Supported
Digital Noise Reduction	Self-adaptive to 2D or 3D DNR
Defog	Automatic/Manual
Image stabilization	Electronic image stabilization
IR coverage	Max. 30 meters
Invisible IR	Supported with 940nm LEDs
Window Self-Cleaning	Supported
Lens	
Focal Length(Zoom Ratio)	2.8-12 mm (4.3x) motorized varifocal, F1.4(max)
Focus	Auto Focus, One-push Focus ,Synchronism Focus
Angular Field of View	Horizontal: 86°(Wide) ~ 34°(Tele) , Vertical: 47°(Wide) ~ 18°(Tele)
Auto-Iris	DC-Iris
Function	
Video compression	H.265 / H.264 / MJPEG
Max. Resolution	1920x1080
Frame rate	60Hz:60/30/20~1fps / 50Hz:50/25/20~1fps
Multiple streaming	Dual Full HD(1080p) streams / Treble streams (30fps or 25fps)
Media stream set	Four predefined packages(High quality, Balanced, Low bandwidth, and Mobile devices) and four customized packages
ISP packages	Five predefined typical scenarios(Outdoor, Indoor, Motion capture, Low-light, and Backlight mode) and eight user-defined scenarios
Audio compression	G.711a/G.711u/G.726/OPUS
PU access protocol	ONVIF Profile S/G,GB/T 28181-2014, Genetec Protocol v1.00 and HUAWEI SDK(private protocol)
Network protocol	TCP, UDP, IPv4, DHCP, DNS, ICMP, IGMP, HTTP, HTTPS, SFTP, RTP, RTSP, RTCP, SIP, ARP, TLS, NTP, SNMP(V1/V2/V3), 802.1x, QoS, DDNS
Stream transmission	Unicast / multicast
Security mode	User name and password authentication, 802.1x (MD5 Challenge), and HTTPS digital certificate, IP address filtering
Stream encryption	AES128/192/256 encryption algorithm, and digital watermark
Intelligent analytics	Object behaviors detections including Crossing line, Idle/removed objects, Loitering and Intrusion, Color recognition, Vehicle and pedestrian classification
Intelligent detections	Motion detection, Covering detection
Event triggers	Motion detection, covering detection, alarm input, intelligent analytics alarm and network disconnection
Event actions	Alarm output, SD card recording, pre-recording and snapshot
Interface	
Ethernet interface	1x RJ45 10/100 Base-T self-adaptive Ethernet port
Serial interface	1x RS-485 port (PELCO-P/D protocol)
Alarm interface	2-channel alarm in and 2-channel alarm out
Analog video interface	1-channel CVBS output, BNC connector
Audio interface	1-channel audio input and 1-channel audio port, 3.5mm mono connector
Memory card slot	1x Micro SD/SDHC/SDXC slot, up to 64 GB
General Parameter	
Power supply	DC12V $\pm 25\%$, DC24V $\pm 25\%$, AC24V $\pm 25\%$, PoE(IEEE 802.3at). DC/AC supply can be hot standby for PoE
Power consumption	Typical: 3.3W, Maximum: 16.3W
Operating environment	Operating temperature : $-40^{\circ}\text{C} \sim 60^{\circ}\text{C}$ Relative humidity: 5% to 95% (non-condensing)
Electromagnetic compatibility (EMC)	Complies with EN 55022 Class B, EN 55024, EN 50130-4, EN 61000-6-1, EN 61000-6-3, EN 61000-3-2, EN 61000-3-3 and FCC Part 15 Subpart B Class B
Lightning surge suppression	6kV surge voltage, complies with IEC 61000-4-5
Anti-corrosion	Satisfies the ISO9223 Class C4 environment, complies with IEC60068-2-11
IP protection class	IP66, complies with IEC 60529
Vandal-proof class	IK10 vandal-proof metal casing complies with IEC 62262
Anti-corrosion	Satisfying 10 days salt spray tests, complies with IEC60068-2-11
Net weight	1.4 kg
Gross weight	1.9 kg
Physical dimensions	353.6x128.1x120.0 mm
Packing dimensions	418.0x163.0x155.0 mm