

JVC®

1/3" CCD COLOUR VIDEO CAMERA

TK-T2101RE TK-T8101WPRE

LoLux™

Like the best criminals
Our cameras come to life at night



TK-T8101WPRE



TK-T2101RE

IR LoLux Security Cameras

Powerful new infra-red camera range



TK-T8101WPRE

TK-T2101RE

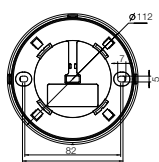
- 1/3" CCD high-resolution camera with 10-bit DSP
- 600 TVL horizontal resolution
- Lolux sensitivity: 0.05 lux colour, 0 lux with IR LED
- Varifocal lens included (dome: 2.8 – 10.5mm, bullet: 3.3 – 12mm)
- Automatic High Light Compensation for extreme white light
- Easy wide dynamic range function for backlight compensation
- Built-in motion detection and privacy mask areas
- Ultra-compact design (dome)
- IP66 rated for outdoor installation (bullet)
- 24VAC / 12VDC power supply

Specifications

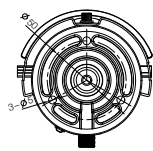
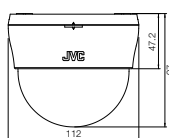
	TK-T2101RE	TK-T8101WP
		
Camera		
Signal system	PAL	PAL
Image device	1/3 type High-resolution IT CCD	1/3 type High-resolution IT CCD
Effective pixels	570,000 (976H x 582V)	570,000 (976H x 582V)
Scanning system	2:1 Interlace V: 50 Hz, H: 15.625 KHz	2:1 Interlace V: 50 Hz, H: 15.625 KHz
Sync system	Internal	Internal
Video output	Composite video signal: 1.0V (p-p), 75 ohms (BNC)	Composite video signal: 1.0V (p-p), 75 ohms (BNC)
Video S/N ratio	50 dB	50 dB
Horizontal resolution	600 TV lines	600 TV lines
Minimum illumination (typical)	0.05 lx (50%, F1.2) 0.025 lx (25%, F1.2)	0.05 lx (50%, F1.4) 0.025 lx (25%, F1.4)
B&W mode	0.015 lx (50%, F1.2) 0 lx (with IR LED ON)	0.015 lx (50%, F1.4) 0 lx (with IR LED ON)
Iris control	DC iris	DC iris
White balance	ATW / Manual / User / Push / Push lock	ATW / Manual / User / Push / Push lock
Shutter speed	1/50 to 1/10,000	1/50 to 1/10,000
Day/Night	True D/N with IR cut-off filter	True D/N with IR cut-off filter
Digital noise reduction	YES	YES
BLC	OFF / BLC / HLC	OFF / BLC / HLC
AGC	AUTO / MANUAL	AUTO / MANUAL
Motion detect	4 areas	4 areas
Privacy mask	Max. 8 areas	Max. 8 areas
IR LED	14 LEDs	28 LEDs
IR wavelength	850 nm	850 nm
IR distance	15M	20M
On screen menu	English, French, German, Spanish, Russia, Portuguese, Simplified Chinese, Japanese	English, French, German, Spanish, Russia, Portuguese, Simplified Chinese, Japanese
Lens		
Focal length	2.8mm to 10.5mm, 3.75x vari-focal [100(H) x 73(V) to 24(H) x 21(V)]	3.3mm to 12mm [100(H) x 73(V) to 24(H) x 21(V)]
View angle	Horizontal: 101.8 (wide) to 27.4 (tele) degrees Vertical: 73.7 (wide) to 20.6 (tele) degrees	Horizontal: 89.8 (wide) to 23.9 (tele) degrees Vertical: 63.6 (wide) to 17.9 (tele) degrees
Aperture ratio	F1.2	F1.4
General		
Power supply	24VAC (50Hz/60Hz) / 12VDC	24VAC (50Hz/60Hz) / 12VDC
Power consumption	5W	7W
Operating temperature range	-10°C to 50°C	-10°C to 50°C
Dust and water proof	-	IP66
Vandal protection	-	Vandal protected
Dimensions	φ 112 mm x 97 mm	φ 83 mm x 206 mm
Weight (approx.)	300 g	680 g

Dimensions

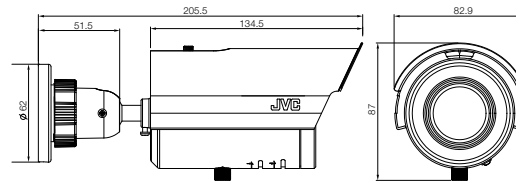
Unit: mm



TK-T2101RE



TK-T8101WP



JVC®