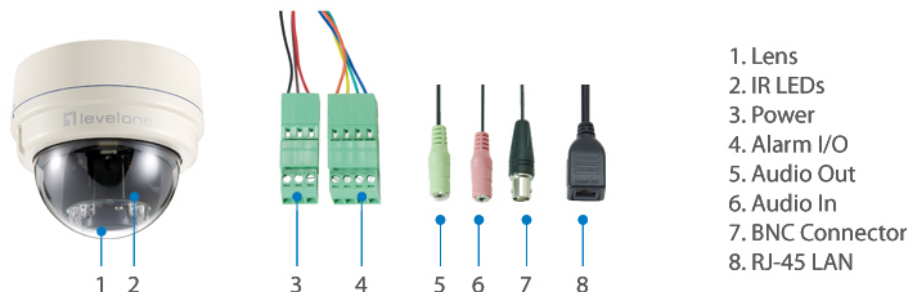




FCS-3081 Version: 3

## 2-Megapixel Day/Night PoE Dome Network Camera

The LevelOne FCS-3081 is the perfect solution for day/night surveillance projects such as school campuses, railways stations, and parking lot. It features a 2-megapixel Dome network camera with IP66 weatherproof outdoor housing and infrared LEDs (25m). With the assistance of 3DNR (3-Dimension Noise Reduction) and WDR (Wide Dynamic Range), the network camera offers crystal clear image each and every time. It also equipped with a BNC connector for camera to be connected directly to an analog monitor, IR-cut filter, a built-in Micro SD/SDHC card, 10 motion detection zones and also offers a flexible installation with its triple power support (12 VDC/24 VAC/PoE) and 3-axis mechanical design. The FCS-3081 is indisputably the top choice for reliable and high performance surveillance.



### Key Features

- 2-Megapixel (1920 x 1080) high-definition resolution
- Built-in infrared LEDs for night viewing up to 25m
- Vandal-proof and weatherproof IP66-rated with wide operating temperature (-35°C to 50°C) for harsh environments
- Features WDR (Wide Dynamic Range) to enhance visibility under extremely bright or dark environments
- Features 3DNR (3-Dimension Noise Reduction) to produce extremely clear picture quality even under low light condition
- Compression: H.264/MJPEG
- 3-axis mechanical design for ceiling/wall mount installation
- Built-in Micro SD/SDHC card slot for local storage
- Digital input/output (1DI/1DO) for sensor and alarm
- BNC connector for analog video output



- Triple power support: 12VDC/24VAC/PoE (IEEE 802.3af)
- Free 64-channel monitoring software included (supports iCamSecure App)

---

## Highlight

### Operate Effectively under the Toughest Weather Conditions

LevelOne network cameras are the perfect solution to help you perform surveillance in a severe cold environment. The device has a built-in heater which allows it to operate in temperature as low as -35 degrees Celsius.

### Flexible Power Options

Featuring PoE (Power-over-Ethernet) capability, the device receives electrical power using Ethernet cabling from a PoE PSE (Power Sourcing Equipment) device, for instance it could be a PoE switch. Thus providing great cost savings by eliminating the need for additional power cables and outlets. In addition, our camera also supports power 12VDC/24VAC through an optional external power supply in case you don't have a PSE device.

### Exceptional Image Quality

With built-in 3DNR (3-Dimension Noise Reduction) and WDR (Wide Dynamic Range) technology, the camera is able to filter the intense backlight surrounding a subject and remove noises from video signal. The result is that an extremely clear and exquisite picture quality can be produced even under any challenging lighting conditions.

### Free bundled 64-channel Management Software

We aim to offer you the most versatile and comprehensive surveillance solutions. Our free IP CamSecure software coming allows you to monitor up to 64 IP cameras simultaneously on one screen to enhance scalability. For added convenience and flexibility, the software includes various advanced features such as scheduling recording, event alert, and heaps more. In addition, simply install our free iCamSecure App to your smartphone and connect to the PC with IP CamSecure software installed, you will easily turn your iPhone/Android smartphone into a portable surveillance system for real-time monitoring and snapshot.

---

## Works Well With



### **FSW-0503**

4 FE PoE + 1 FE Switch, 61.6W



### **NVR-0208**

8-CH Network Video Recorder

---

## Specifications

### System Specifications

#### Image Sensor:

2-Megapixel 1/2.7" Progressive Scan CMOS

#### Connectors and Cabling:

1 x RJ-45 10/100 Mbps PoE port

1 x 3.5mm line out

1 x 3.5mm mic/line in

1 x Power terminal block

1 x BNC analog video output

I/O terminal block (1 DI/1 DO)

**Modularity:**

1 x MicroSD/SDHC card slot

**Button:**

Reset Button

**Indicator:**

Link / Act

**Lens:**

Board lens, vari-focal,  $f=3 - 9$  mm, F1.2

**IR Cut Filter:**

Removable infrared-cut filter for day & night function

**IR LED:**

24 IR LEDs for illumination up to 25m

**Shutter Time:**

1 ~ 1/10,000 sec.

**Angle of View:**

103.5°(W) ~ 34.3°(T)

**Pan/Tilt/Zoom:**

8x digital zoom

**Video Compression:**

H.264 / MJPEG

**Resolution:**

2M (1920x1080) / SXGA (1280x1024) / 1M (1280x720) / XGA (1024x768) / SVGA(800x600) / D1 (720x480) / VGA (640x480) / CIF (352x240)

**Video Format:**

AVI

**Audio Compression:**

G.711 / G.726

**Power:**

Power Consumption: up to 9W without heater & fan (DC12V/PoE)

up to 25W with heater & fan (AC24V)

Power Input: DC12V / AC24V / 802.3af PoE

**Standards & Protocols:**

IEEE 802.3 10-BASE-T, Ethernet

IEEE 802.3u 100-BASE-TX, Fast Ethernet

IEEE 802.3af Power over Ethernet (PoE)

IPv4/v6, TCP/IP, UDP, RTP, RTSP, HTTP, HTTPS, ICMP, FTP, SMTP, DHCP, PPPoE, UPnP, IGMP, SNMP, QoS

## Physical Specifications

**Dimensions (W x D x H mm):**

151 x 151 x 130 mm

**Weight (g):**

1350 g

**Enclosure:**

Weatherproof IP66-rated housing

Metal base and polycarbonate transparent cove

## Performance

**Number of Clients:**

**Data Transfer Rate:**

10/100Mbps

**Frame Rate:**

Up to 15 fps at 1920x1080

Up to 30 fps at 1280x1024

**Minimum illumination:**

Color: 0.2 lux at F1.2

B/W: 0.02 lux at F1.2

## Features

**General:**

Backup: MicroSD/SDHC card slot for local storage

IPv6: IPv4/IPv6 network operation

**Security:**

Alarm and Notification: Alarm: Motion Detection; Tampering Detection; Network Failure Detection; DI/DO

Notification: HTTP, FTP, SMTP

Access Control: Multi-level user access with password protection

IP address filtering

IEEE 802.1X network access control

HTTPS encrypted data transmission

**Video:**

Image Setting: - Adjustable image size, quality and bit rate

- Configurable brightness, sharpness, contrast, saturation, white balance and exposure

- ACG/AWB/AES

- Back Light Compensation (BLC)

- Wide Dynamic Range (WDR)

- 3D Noise Reduction (3DNR)

- Flip & Mirror

- Portrait Mode

- Privacy Mask

- Time Stamp and Text Caption Overlay

Image Layout:

Streaming: Up to 4 video streams

Motion Detection: 10 Detection Zones

**Audio:**

Streaming: 2-way audio

Input/Output: Mic/line input, line output

## Environment

**Temperature (°C):**

Operating: -10°C ~ 50°C, powered by DC12V/PoE

Operating: -35°C ~ 50°C with heater & fan, powered by AC24V

**Humidity (Non-condensing):**

Operating: 10% ~ 90%

## Others

**Approval and Compliance:**

CE, FCC, ONVIF

**Deployment:**

Ceiling Mount

**Operation Systems:**

Microsoft Windows 7/Vista/XP

#### Viewing System Requirements:

Browser: Internet Explorer 6.x or above, Firefox, Chrome, Safari

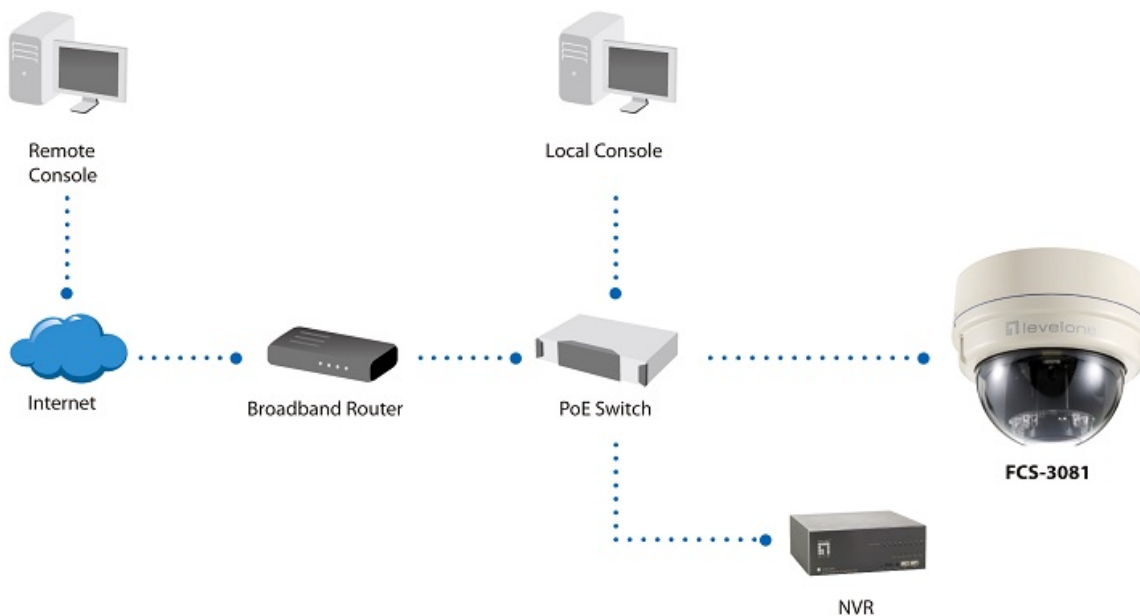
Cell phone: 3GPP player

Real Player: 10.5 or above

Quick Time 6.5 or above

---

## Diagram



---

## Order Information

FCS-3081

---

## Package Contents

Power Terminal Block

Screw Kit

Quick Installation Guide

Resource CD (User Manual, Utility, 64-CH Monitoring Software)

---

## Optional Accessory



### **CAS-3263**

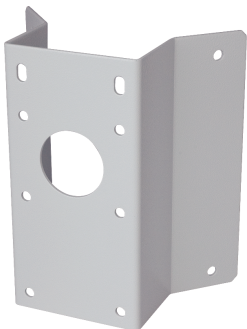
Pole Thin Box Mount Kit



**CAS-3261**  
Pole Thin Direct Mount Kit



**CAS-3223**  
Corner Thin Box Mount Kit



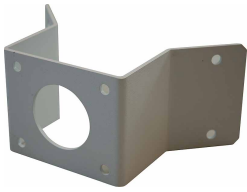
**CAS-3222**  
Plate Corner Mount Kit



**CAS-3281**  
Wall Box Mount Kit



**CAS-3000**  
Outdoor Housing



**CAS-3221**  
Corner Plate Mini



**CAS-3201**  
Mini Pendant



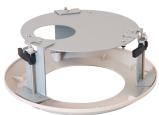
**CAS-3242**  
50cm Straight Tube



**CAS-3241**  
25cm Straight Tube



**CAS-3101**  
Interior Corner Mount Kit



**CAS-3100**  
T-Bar Ceiling Mount Kit