

High-Quality 1080p HD Security Camera with View-DR Technology

- Excellent 1080p HD picture quality, supporting H.264 at 30 fps
- 3 Megapixel (1920 × 1440) maximum resolution
- Three codecs (H.264, MPEG-4, JPEG) and a dual streaming capability
- The Exmor™ CMOS sensor incorporated to deliver high image quality and low noise



Key Features

- View-DR™ technology—Sony's innovative Wide Dynamic Range technology— to capture objects clearly and adaptively even under very severe backlight or highlight conditions.



OFF



ON

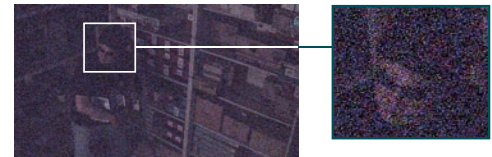
(Actual Images)

- Visibility Enhancer to optimize the brightness and color reproduction of an image dynamically on a pixel-by-pixel basis while continuously adapting to the scene, within the given dynamic range.
- Easy Focus function for easy installation.
- DEPA™ Advanced Intelligent Video and Audio Analytics to trigger an alarm, based on user-defined rules.

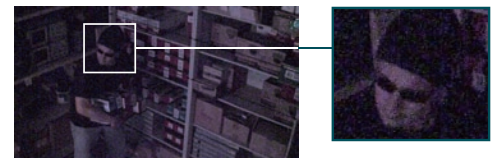


- Equipped with a CompactFlash™ slot for on-board recording and wireless operation capability with the optional SNCA-CFW5 802.11g card.

- Optical Day/Night function to switch to Day or Night mode depending on the light level.
- XDNR™ (eXcellent Dynamic Noise Reduction) technology for clear images without motion blur under low illumination.



OFF



ON

(Actual Images)

- Powered by either AC 24 V, DC 12 V, or PoE (Power over Ethernet) for easy installation.
- Equipped with a BNC connector to instantly monitor the video while installing the camera.
- ONVIF™ (Open Network Video Interface Forum) software that ensures greater interoperability and more flexibility in building multiple-vendor systems.



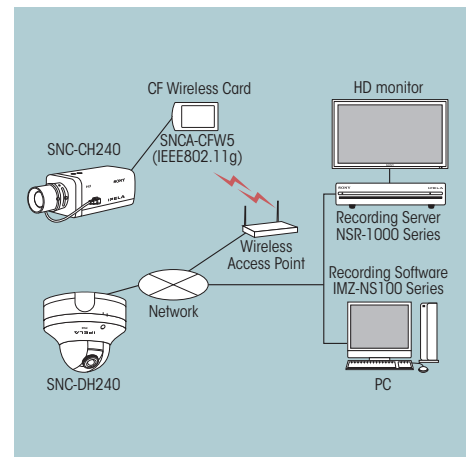
SPECIFICATIONS

| SNC-CH240 | |
|------------------------------------|---|
| Camera | |
| Image device | 1/2.8 type progressive scan Exmor CMOS sensor |
| Minimum illumination | Color: 0.40 lx, B/W: 0.25 lx (F1.2/View-DR OFF/XDNR ON-Middle/VE OFF/AGC High/50 IRE (IP)) |
| Number of effective pixels (H x V) | 3.27 Megapixel (2096 x 1561) |
| Electronic shutter speed | 1s to 1/10000s |
| Gain control | Auto (3 levels) |
| Exposure control | Auto, EV Compensation ^{*1} , Auto Slow Shutter ^{*2} |
| White balance mode | Auto (ATW, ATW-PRO), Preset, One-push WB, Manual |
| Lens type | C5 mount lens |
| Zoom ratio | Optical 2.1X (x2 Digital Zoom) |
| Horizontal viewing angle | 101.2 to 47.0 degrees |
| Focal length | f=2.8 to 6.0 mm |
| F-number | F1.3 (Wide), F1.9 (Tele) |
| Minimum object distance | 300 mm |
| Powered focus | Yes (Easy Focus) |
| Camera Features | |
| Day/Night ^{*3} | Yes |
| Wide-D | View-DR Technology (90dB) |
| Image enhancement | Visibility Enhancer |
| Noise reduction | XDNR Technology |
| Image | |
| Codec image size (H x V) | 1920 x 1440, 1600 x 1200, 1680 x 1056, 1920 x 1080, 1440 x 912, 1376 x 768, 1280 x 960, 1280 x 800, 1280 x 720, 1280 x 1024, 1024 x 768, 1024 x 576, 800 x 480, 768 x 576, 720 x 576, 704 x 576, 720 x 480, 640 x 480, 640 x 368, 384 x 288, 320 x 240, 320 x 192 (H.264, MPEG-4, JPEG) |
| Video compression format | H.264, MPEG-4, JPEG |
| Codec streaming capability | Dual streaming |
| Maximum frame rate | H264: 20 fps (1920 x 1440) / 30 fps (1920 x 1080) MPEG-4: 15 fps (1920 x 1440) / 20 fps (1920 x 1080) JPEG: 10 fps (1920 x 1440) / 15 fps (1920 x 1080) |
| Audio | |
| Audio compression | G.711/G.726 |
| Scene Analytics | |
| Intelligent motion detection | Yes (with built-in Post Filter) |
| Intelligent object detection | No |
| Rule filter | Yes |
| Network | |
| Protocols | IPv4, IPv6, TCP, UDP, ARP, ICMP, IGMP, HTTP, HTTPS, FTP (client/server), SMTP, DHCP, DNS, NTP, RTP/RTCP, RTSP, SNMP (MIB-2) |
| ONVIF software | Yes |
| Wireless network | Yes (with option ^{*4}) |
| Number of clients | 10 |
| Authentication | IEEE802.1X |
| Analog Video Output | |
| Signal system | NTSC / PAL |
| Horizontal resolution | 600 TV lines |
| S/N ratio | More than 50 dB |
| Interface | |
| Ethernet | 10BASE-T / 100BASE-TX (RJ-45) |
| Serial interface | No |
| Card slots | x 1 |
| Analog video output | BNC x 1 |
| Sensor input | x 1 |
| Alarm output | x 2 |
| External microphone input | Mini-jack (Monaural), MIC IN/LINE IN: 2.5VDC plug-in power |
| Audio line output | Mini-jack (Monaural), Max output level: 1 Vrms |
| General | |
| Weight | 1 lb 7 oz (650 g) |
| Dimensions | 2 7/8 x 2 1/2 x 7 7/8 inches (72 x 63 x 197.3 mm) |
| Power requirements | PoE, AC 24 V, DC 12 V |
| Power consumption | 11.2 W max. |
| Starting temperature | 32 to 122°F (0 to 50°C) |
| Working temperature | 23 to 122°F (-10 to +50°C) |
| Storage temperature | -4 to +140°F (-20 to +60°C) |
| Safety regulation | UL2044, FCC 15B Class A, IC Class A, IEC60950-1, EN55022(A)+EN55024+EN50130-4, VCCI Class A, C-Tick Class A |
| System Requirements | |
| Operating system | Windows XP®, Windows Vista®, Windows 7® |
| Processor | Intel Core2 Duo® 2 GHz or higher |
| Memory | 1 GB or more |
| Web browser | Microsoft Internet Explorer® Ver6.0, 7.0, or 8.0 |
| Supplied Accessories | |
| | CD-ROM (User's Guide, SNC Toolbox) Installation manual Wire rope M4 screw B&P Warranty Booklet |

^{*1} VE off mode only. ^{*2} View-DR off mode only. ^{*3} Removable IR Cut Filter. ^{*4} With optional SNCA-CFW5.

^{*}The SNC-CH240 include software developed by the OpenSSL Project for use in the OpenSSL Toolkit (<http://www.openssl.org/>).

SYSTEM CONFIGURATION



DIMENSIONS

Unit: inches (mm)

