

Dynacom WQT420BS

Intelligent Thermal Bullet Camera

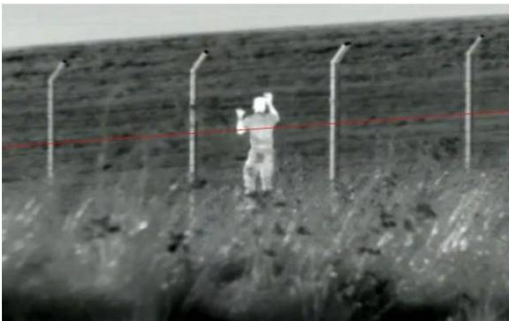
Uncooled IRFPA Microbolometer
Lens options (8/15/25/35/50mm)
Sensitivity $\leq 40\text{mK}$
Temperature Detection
17 Color Control
DVE Image Enhance
2/2 Alarm In/Out



System Overview

Featuring a fixed lens bullet camera, this series provides an all-in-one solution that is especially beneficial for long distance video surveillance in outdoor applications. Together with Thermal technology, the camera's long range capabilities are able to be utilized even at night.

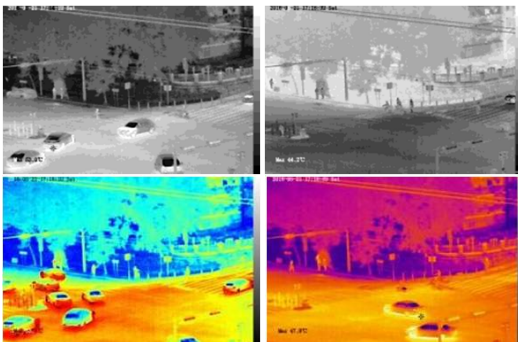
Thermal imaging surveillance IP Camera



Intelligent features for perimeter security



Temperature measuring and monitoring



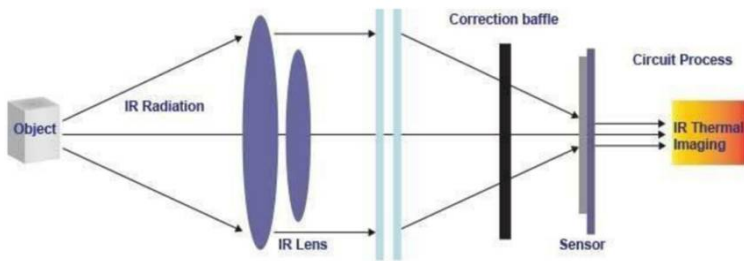
Multi color monitoring



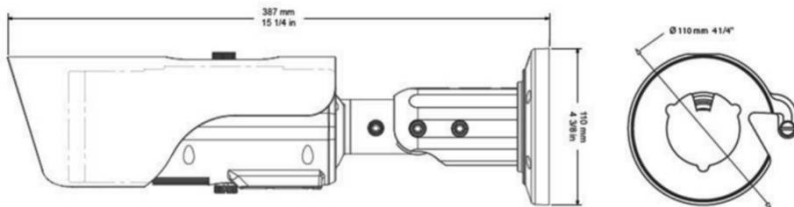
Web GUI and ONVIF compatible

DynaCom WQT420BS Intelligent Bullet Thermal Camera					
Detector Type	Uncooled IRFPA Microbolometer				
Pixel Size	17um				
Thermal Sensitivity (NETD)	≤40mK @F1.0, 300K				
Spectral Range	8~14um				
Image Setting	Polarity LUT/ DVE/ Mirror/ FCC/ /3D DNR Brightness/Contrast/ ROI				
Color Palettes	Black-Heat /White-Heat/Rainbow/Iron-Red up to 17 modes				
Thermal Lens					
Lens Type	Fixed				
Focus Control	Manual Focus				
Focal Length	8mm	15mm	25mm	35mm	50mm
F No.	F1.0	F1.0	F1.0	F1.0	F1.0
Angle of View	H: 68.4°	H: 39.8°	H: 24.5°	H: 17.6°	H: 12.4°
	V: 57.1°	V: 32.3°	V: 19.7°	V:14.1°	V:9.9°
Detection Distance Fire(1m*1m)	235m	441m	735m	1029m	1471m
Detection Distance Man(1.8m*0.5m)	235m	441m	735m	1029m	1471m
Detection Distance Vehicle(4m*1.5m)	722m	1353m	2255m	3137m	4510m
Recognition Distance Fire(1m*1m)	78m	147m	245m	343m	490m
Recognition Distance Man(1.8m*0.5m)	59m	110m	184m	257m	368m
Recognition Distance Vehicle(4m*1.5m)	180m	338m	564m	789m	1127m
Intelligence					
Intelligent Functions	Motion detection, Disk alarm, I/O alarm, Temperature alarm				
IVS	Perimeter ,Single Virtual Fences ,Double Virtual Fences ,Object Left ,Object Removed				
Temperature Detection					
Detection Mode	Spot, Line, Area				
Detection Preset	Spot: 20, Line: 2, Area: 16				
Temperature Alarm	Over temperature alarm, Temperature difference alarm				
Accuracy	±2°C / ±2%				
Response Time	≤30ms				
Effective temp. working environment	-40 °C ~ 60 °C (-40°F ~ 140 °F)				
Theory of temp measurement range	-40 °C ~ 150 °C (-40°F ~ 302 °F)				
Temperature display mode	Temperature target > 5°C, Display absolute temperature value;				
	Temperature target ≤5°C, Display relative temperature value (temperature difference DEV = highest value - average)				
Network					
Ethernet	RJ-45 (10/100Base-T)				
Protocols:	IPv4/IPv6 ,HTTP,RTSP/RTP/RTCP, TCP/UDP, DHCP, DNS, PPPOE, SMTP, SIP ,802.1x				
Interoperability	ONVIF, CGI				
Streaming Method	Unicast				
Max. User Access	10 Users				
Edge Storage	NAS				
	Local PC for instant recording				
	Micro SD card 128GB				
Web Viewer	<IE11, Chrome, Firefox				
Web Language	English, Chinese, Polish, Italian, Portuguese, Spanish. Russian, French, Czech, Hungarian				

Interface	
Ethernet	1 Ethernet (10/100 Base-T) RJ-45 Connector
Audio Interface	1ch Audio In,1ch Audio Out
Alarm	2ch Alarm In,2ch Alarm Out
RS485	Support
Reset Button	Support
General	
Power Supply	DC12V/POE/AC24V
Power Consumption	Max 5W
Operating Temperature	-40 °C ~ 60 °C (-40°F ~ 140 °F)
Storage Conditions	0~ 90% RH
Certifications	CE /FCC
Ingress Protection	IP67
Casing	Metal
Dimensions	φ110×388mm
Net Weight	1900g



Dimensions (mm)



Accessories (Optional



Pole Mount



Junction Box